

27 CAL 100 ED
11X

In Two Sections - Forty Pages
The Only Newspaper Printed and Published in Hicksville

Mid-Island Times & Levittown Times 25¢

Vol. 44 No. 10

USPS 346-760

Friday, March 8, 1985

Second Mini- Jr. H.S. Marathon



Left to right: Coach Buddy Bryan, Vincent Drew, Glen Dodge, Patrick Seiden, Joseph Murphy, Stacey Price, Coach Marge Steinhach.

In the fall the Hicksville Junior High School Physical Education Department sponsored its 2nd annual Mini-Marathon for 3000 meters. After a 2 week tune-up over 1200 boys and girls in the physical education program participated in the middle distance run. As part of the regular sports program, the task has become a very popular event among the junior high school student.

The youngsters who logged the best times, according to standardized norms are rewarded handsomely with a sporty shirt with the Olympic Track emblem: Paul Aversano, John Fabrizio, Brian Robey, Dominick Mirabelli, Mike Luongo, Cliff Brutus, Jimmy Pernice, Bobby Lichtman.

Steven Gourlay, James McMahon, Joe Passo, Tom Pedicini, Rodger Chin, Tom Cassata, David Dobrindt, Stacey Price, Carol Schneider, Liz Coakley, Cheryl Zukowsky, Colleen Kenny, Cheryl Olivia, Jeanne Rodgers, Jean Harkins, Kristin Mind, Timothy Cleary, Raymond LaGuarina, Sean Brennan, Kevin Burke, Vinny Longo, Dave Mahoney, Phil Campisi, Glenn Doge, Andrew Kilmatis, William Leahy, Joseph Murphy, Pat Seiden, William Sheppard, Tom Sullivan, Mike DePina, Robert Kratochvil, Tom Losco, Ron Sargent, Tim Gansrow, William Neway, Ken Kelliher, Glenn Slater, Greg Malheron, James Ort, Steve Lee, Tony Schiralli, Vincent Drew, Fred Amaya, Mathew Conroy

Music Recital At Hicksville Library

Clarinetist Michelle Grossman and pianist Elizabeth LaTorre will perform at the Hicksville Public Library on Friday, March 15, kicking off a new musical series, "Young Concert Virtuoso's," it was announced this week by Oyster Bay Town Councilman Angelo A. Delligatti.

The concert, which is being sponsored by the Cultural and Performing Arts (CAPA) Division of the Department of Community Services, will be held at the Library, 169 Jerusalem Avenue, beginning at 8:15 p.m. for further information on the free program, contact CAPA at 795-1000.

"A resident of Hicksville, Miss Grossman studied at the Aaron Copeland School of Music of Queens College, receiving a B.M. Degree," Delligatti stated. "She was the featured soloist in the Celebration of Long Island Talent Concert and has performed with the Long Island Composers Alliance, the Concert Orchestra of Long Island and the Einstein Symphony, among other groups."

For this concert, Miss Grossman will be accompanied by

pianist Marilyn Lehman. Selections will include "Sonata No. 2 Op. 120", by Brahms, "Vocalise Op. 34 No. 14", by Rachmaninoff and "Fantasiestücke" by Schumann.

"Miss LaTorre, who hails from New Hyde Park, graduated Cum Laude from Hofstra University and is currently studying under Blanche Abram," Delligatti said. "She has performed throughout Long Island and New York City and toured extensively in West Germany and Austria."

For this performance, Miss LaTorre will perform, "Prelude and Fugue XXIII in B Major BWV 868" by Bach, "Klavierstücke Op. 118", by Brahms and "Concertino", by Von Weber.

"The 'Young Concert Virtuoso's' series was developed to showcase young musicians and give them performing experience," Delligatti commented. "I hope residents will come out to hear these fine musicians and offer their encouragement to them as they embark on what we all hope will be long and successful musical careers."

Favorable Rate For Tobay Bonds

Oyster Bay Town Supervisor Joseph Colby has announced the sale of \$15,550,000 of long-term serial bonds at a net interest rate of 8.29% to a syndicate represented by Barclays Bank of New York.

Colby said that the favorable interest rate was attributable to the Town's high credit standing, the timing of the sale and the Town's excellent financial position.

"Since the Town qualified for M.B.I.A. Insurance coverage, the Bonds, will be rated AAA by both Moody's Investors Service and Standard & Poor's Corporation," Colby said.

The Bond Sale comprises consolidation of twenty-three previously authorized bond issues for various Capital Improvement Projects, with a total value of \$15,550,000. Details of the sale were handled by Fiscal Advisors, Inc., of Hicksville.

Open House At St. Ignatius

St. Ignatius Loyola School will be hosting an open house on Wednesday, March 13, for Nursery, Pre-Kindergarten and Kindergarten classes from 9:30 to 10:30 a.m. and from 12:30 to 1:30 p.m. All are invited to attend.

Due to the success of the introduction of our Full Day Kindergarten Program, we are now in the process of preparing to open a second class.

Soroptimists Give Training Award

Mrs. Sandra Valli of Levittown is the winner of the 1984 Training Award which is given annually for financial assistance to an outstanding woman who is pursuing educational requirements to further her career.

Mrs. Valli is the sole support of her household and the mother of three children. She is presently employed as Administrative Secretary for the Coalition of Abused Women. She is pursuing her bachelor's degree in Psychology at Adelphi University as a full time evening student. The award will enable her to pursue her concentration in the human resources field.

Soroptimist International is a women's service organization with chapters throughout the world to advance professional achievement and to further citizenship, humanitarianism and community service.

School Bd. Offers Vocational Options

Special to Mid Island Times
By Valerie Pakaluk

Approval for Hicksville High School students to choose vocational courses other than those provided by BOCES was granted by the Board of Education at the February 27 meeting.

The programs are held in secondary schools in the East Meadow and Levittown School Districts. Some of the subjects are Technical Architecture, Technical Electricity and Electronics, Mechanical Design, Auto Body Repair, Auto Mechanics, Cabinet Making, Child Care, Cosmetology, Culinary Arts, Design Drafting, Electronics, Fashion Design, Machine Shop, Micro Computer Repair, Printing and Photo Offset Lithography.

Students can enter with advanced standing at the Suffolk Community College after completion of the Levittown computer repair and radio/TV repair programs. In addition, the Levittown auto repair course enables successful students to become licensed New York State Inspectors.

Tuition fees for the 1984-85 year in East Meadow are \$1442. per student, Levittown \$1350. per student and BOCES \$4000. per student. It is anticipated that approximately 100 students will attend BOCES programs next year while another 100 will go in East Meadow or Levittown, depending on choice of study. Transportation arrangements have been made available for students attending either facility.

Sixteen High School students and two teacher chaperones will depart March 31 and return April 9 with a Humanities European Tour. Under the guidance of Dr. Leo V. Kanawada, Jr. the travel arrangements have been made through Martin Drewitz, general manager of Contemporary Tours at a cost of \$1134. per person.

The next Board of Education meeting is scheduled for Wednesday, March 27, at 8:15 p.m. in the Conference Room at the Administration Building.



Oyster Bay Town Councilman Thomas L. Clark, second from left, cuts the ribbon at the grand opening of Plaza 400 in Hicksville. Also on hand were Vincent Pollmeni, second from right, president of Pollmeni Enterprises, Inc. and project developer Mart Gordon, the building's designer; Joan Pollmeni, center, and Carol Gordon. The newly created office building which is located on South Oyster Bay Road, was formerly a movie theatre.

DISCOVER PLAINVIEW

Spring is around the corner and the shops and services advertised in the special "Discover Plainview" section invite all our readers to visit them for efficient, courteous service and excellent values. Shop locally and when you do tell them you saw their ad here!



Television producer, Miss Doris Bergman, left, and Jessica Garnets, right, Hicksville's "Annie". Students in the Gifted and Talented program were fortunate on February 28 to learn about many changes in the broadcasting industry. They heard anecdotes and saw video clips provided by guest speaker Miss Doris Bergman, a television producer from WNEW-Channel 5. Miss Bergman lectured and provided a question and answer period in the Hicksville Junior High School Auditorium in the afternoon. After her presentation the cast of "Annie" provided Miss Bergman with a preview of our April production. The Drama Club chorus was at their best, and our guest was happy to get a sneak preview.

Shamrocks Defeat Syosset

The Hicksville Shamrocks boys 1974 traveling soccer team bested the Syosset Cyclones 7-4 this past Sunday to bring their record to four wins, no losses in the Shep Messing Indoor Soccer League. It was a tightly contested event until the final whistle.

The team was led by the outstanding goaltending of Eddie Jacobsen and Brian Pine, who both took turns as offensive and defensive players with equal success. Brian Harkins, playing fullback, contributed three big assists including a beauty on an indirect. Jason Kingsley was a constant offensive force, scoring the Shamrocks first goal and then the go-ahead goal in the last quarter. David Lovato scored the Shamrocks second goal and last goal, while contributing strong, aggressive play from striker. Jared Jacobs was constantly on the ball, chipping in with two big goals while always making things "happen."

Joe Flanagan, playing fullback, was at his defensive and offensive best, forever keeping Syosset off balance while skillfully covering the field. Todd Meringoff scored one goal and displayed intelligent soccer know-how. Eric Blicher had his usual steady, aggressive game at fullback and wing. Ted Knoop had a strong game from wing and fullback. Gregg Gruosso supported the team effort with gutsy play at wing and fullback. Matthew Pordum was in the thick of the action at both wing and striker with equal flair.

Great going, Shamrocks! Thanks to assistant coach Peter Knoop for a job well done!

In Memoriam

Martin Ginsberg
Former Assemblyman Martin Ginsberg 54 of Plainview died Friday.

He fought the polio that forced him to walk with crutches, never allowing it to deter his progress as a scholar at St. John's University and its law school and in a legal and political career that finally led to the State Legislature and then to a Nassau Family Court judgeship.

It was that fighting spirit and his humanity that hundreds of friends recalled at the funeral service Sunday in Woodbury for Mr. Ginsberg, who died Friday in Long Island Jewish-Hillside Medical Center after a long illness.

Mr. Ginsberg, a Republican from Plainview, served in the State Assembly, where he was chairman of the Health Committee from 1966 until 1972. As a legislator, he championed measures to improve health care and to aid the disabled.

His role as a legislator and his compassion as a judge were noted at his funeral Sunday by Rabbi Julius Goldberg of the Plainview Jewish Center, Rabbis Solomon and Morris Appelman and one-time Assembly colleagues including James Emery of Geneseo, the former minority leader, and Milton Jonas of North Merrick.

Jonas said yesterday, "Marty had an awful lot left to contribute to this world."

Mr. Ginsberg leaves his wife, Joan; a daughter Susan and two grandchildren.

Lee Avenue School Events

The Hicksville Council of PYA's held its 31st annual Founders Day Dinner at the Crest Hollow Country Club in Woodbury.

Lee Avenue honored three individuals who have devoted many years to the education and welfare of our children. Each of these women have given unselfishly of their time and energies.

Mrs. Betty Grayson, kindergarten teacher, has spent most of her twenty year career in Hicksville. A staunch supporter of PTA she has done much to promote parent and teacher relations and feels that the family is an important part of teaching.

Mrs. Grace Russo has a son in the fourth grade and another in his first year of junior high. Grace began at Lee as a pre-school teacher and later became active as a Class Mother and then with the PTA serving on many committees such as Publicity and Special Events. She has served as second vice president and currently chairs the Ways & Means Committee.

Mrs. Barbara Russo is the mother of a boy in fourth grade and a daughter in the junior high. One of Barbara's first activities at Lee was to help with pre-school. She has served the PTA in many capacities, from Class Mother to Treasurer of the Executive Board. At present Barbara chairs our Special Events Committee.

On February 28, our fourth grade students and teachers gave a program on American patriotism. Accompanied on two pianos by Dr. Lebow and Dr. Scher, the students performed songs from the American Revolution, the Civil War, World War I, World War II, some songs about life in America and some about Indians. There was a square dance demonstration complete with caller and fiddler. Some of the children portrayed famous people of the times and Mr. Skupinsky's class gave a choral reading. Mr. Magrane, Miss Paton, Mr. Savalas and Mr. Skupinsky all read famous works from the different eras. Miss Eisen did the art work for the show.

This program was in conjunction with the PTA February RIF Book Distribution and was designed to spark a deeper interest in America and its people.

A general meeting held at Lee on March 7 featured as guest speaker Mr. Alfred J. Peck, C.S.W., Executive Director of H.A.D. (Help - Aid - Direction).

A film was shown on the effects of drugs and alcohol followed by a lecture on drug use on Long Island and the agencies experienced with drugs in elementary schools. There was a brief question and answer period afterwards. This evening sponsored by the PTA was in connection with the National PTA Drug and Alcohol Awareness Week.

News From Road Runners

The Plainview Old Bethpage Road Runners Club is pleased to announce that the featured program at its March 19 open meeting will be a talk and slide/sound presentation by Stephen Mendelsohn, the Communications Director of the New York City Marathon.

A 26.2 mile run covering all five New York City boroughs, with 17,000 runners and literally millions of spectators, requires a flawless communications network that can insure instant communication between any part of the course and any other part of the course. Mr. Mendelsohn, a production engineer for CBS and an experienced amateur radio operator, is charged with keeping the entire Marathon staff informed of what is happening before, during and after the race. He has a unique insight into what goes on "behind the scenes" at the Marathon, and is prepared to share his experiences by means of a "professional" slide/sound show.

The March 19 meeting will be held at the Plainview Old Bethpage Public Library starting at 8 p.m. The general public is cordially invited to attend. For more information, call POBRRR President Mike Polansky at 433-0919.

LEGAL NOTICE

POWER TEST INVESTORS LIMITED PARTNERSHIP, 175 Sunnyside Blvd., Plainview, New York 11803. Substance of Certificate and Agreement of Limited Partnership filed in Nassau County Clerk's Office on January 15, 1985. Business: Invest in and become limited partner of Power Test Realty Company Limited Partnership, and make a public offering of Partnership Interests in such Partnership. General Partner: CLS General Partnership Corp., a Delaware corporation, 175 Sunnyside Blvd., Plainview, New York 11803. Limited Partner: Mr. Leo Liebowitz, 175 Sunnyside Blvd., Plainview, New York 11803. Additional Limited Partners may be admitted. Term: Until January 10, 2085 unless sooner terminated. Capital Contributions: General Partner may accept contributions of an aggregate of \$2,000,000, representing 5,000,000 Units of Partnership Interests at \$40 per Unit. Initial Capital Contributions of Partners: General Partner-\$100, Limited Partner-\$99. No additional contributions agreed to be made, but additional contributions may be made. No withdrawal of contributions except as expressly provided in Partnership Agreement. All allocations and distributions pro rata to contributions. Transfer: Units representing Partnership Interests may be transferred. Continuation of Business: Majority-in-Interest of Limited Partners may continue business upon withdrawal of General Partner. BN 2374 6x2/1. 8. 15. 22; 3/1. 3/8

Caring People Can Thwart Epidemic

By Effie Krogmann

Very recent studies have revealed that nationwide hunger has reached epidemic proportions. If that is true, the compassionate people of this area are already taking steps to alleviate that kind of suffering. Hicksville I.N.N. (Interfaith Nutrition Network) continues to swell its ranks and it appears that by April they will be able to start operating the local soup kitchen to provide meals for anyone who is hungry.

In the meantime donations of food, time, talent and material are needed. An organizational meeting is scheduled for March 11 at 11:30 a.m. at Redeemer Lutheran Church at 17 New South Road in Hicksville, for a further exchange of ideas and solutions to problems. Your help is needed. Please come. There will be no "epidemic" here!

For further information call the Rev. Theodore S. Grant at 938-8693, or Effie Krogmann 367-4835.

LEGAL NOTICE CERTIFICATE OF LIMITED PARTNERSHIP OF FIRST CAPITAL PENSION INVESTORS-II

This certificate of limited partnership is filed for **FIRST CAPITAL PENSION INVESTORS-II**, a New York limited partnership created to purchase mortgages and real estate, with its principal place of business c/o its Managing General Partner, **FIRST CAPITAL PENSION ADVISORS CORPORATION**, One Merrick Avenue, Westbury, New York 11590. Original limited partner is Gilbert T. Perlman, Esq., One Merrick Avenue, Westbury, New York 11590. Term of Partnership is until January 31, 2000. Partners' contributions are: First Capital Pension Advisors: Corporation, \$100; Gilbert T. Perlman, \$100; **TOTAL: \$200.**

No future contributions required. Withdrawing limited partners will be repaid in cash. Partnership profits and losses will be allocated 81% to limited partners and 17% to Managing General Partner. Additional limited partners to be admitted by consent of Managing General Partner, and 1/3 of limited partners. No transfer of limited partner's interest without prior consent of Managing General Partner, and 1/3 of limited partners. Assignee will assume all obligations and be entitled to all benefits of assignor from date of assignment. Limited partners may remove Managing General Partner and substitute new Managing General Partner by 2/3 vote. In event of bankruptcy of Managing General Partner, partnership will terminate unless vote of 3/4 of limited partners selects successor Managing General Partner. MIT 1772 6x2/22. 3/1. 8. 15. 22. 29

Mid Island Times & Levittown Times

Published every Friday by Litmor Publishing Corp.
Second Class Postage Paid at Hicksville, N.Y. 11801

Telephone 931-0012 - USPS 346-760

81 E. Barclay St., Hicksville, N.Y. 11801

Postmaster: Send Address Change to

Mid Island & Levittown Times, 81 E. Barclay St.,

Hicksville, N.Y. 11801

Robert Morgan - Publisher. Yearly Subscription \$5.50

CALL INPUT 931-0027
24 hours a day! Answer
the Question of the Week
or express an opinion on
other topics of interest
to readers....

Libertarians Meet March 18

The Nassau Libertarian Club will present two talks at its March 18 meeting in the Jolly Swagman Inn, 100 W. Nicholai Street, Hicksville at 8 p.m. Mindful of the April deadline for filing tax returns, Club Treasurer William Stocker III, a C.P.A. will speak on "Personal Tax Reduction". Suffolk County libertarian Virginia Walker, a college instructor will speak on "Threats to Property Rights".

Mrs. Walker of Shirley, New York, formerly ran for the State Assembly and currently teaches at St. John's University. Her talk highlights the libertarian position supporting private property rights and their abridgment by government or others. She explains why libertarians

condemn such measures as eminent domain, zoning, land use restrictions, and other interferences with property rights as unjust and economically unsound. Moreover, libertarians point out that these methods have been used repeatedly to promote racism.

The Nassau Libertarian Club meets the third Monday of each month at the Jolly Swagman Inn, Hicksville, and can be contacted by writing Nassau Libertarian Club, Box 1729, Massapequa, N.Y. 11758. High School students and others interested in libertarian literature can write the Club for such information, which may help them in school work.

Students Seeking LibertyImmigrants

Did you arrive at Ellis Island before it closed in 1954? Would you care to share your personal experiences upon your arrival at Ellis Island? The students at Plainview-Old Bethpage Middle School would like to meet and talk with you.

We would appreciate your helping us celebrate the Statue of Liberty and Ellis Island Centennial.

Please call Mrs. Smyle or Mrs. Wolfe at 938-5400 x 350.



Hicksville Rotarians were pleasantly surprised with the unexpected appearance of Past President Edward Johnson who paid a visit from his home offices in Ohio. During his previous tenure in Hicksville, Mr. Johnson was an active member of the Hicksville Chamber of Commerce as well as the Hicksville Rotary Club and was very instrumental in the Hicksville Beautification project and the Gift of Life program. He is shown above, right, being welcomed by Rotary President Harry Feltz. (Official Rotary Photo by Joe DePaola)

SHOP-WISE
DRUG STORE FREE GIFT WRAPPING

324 Jericho Tpke. Syosset
- 921-5260

Perugina Barricini Candy Greeting Cards Gift Dept.

Free Delivery

<p>AIM TOOTHPASTE</p> <p>Aim <small>Fluoride</small></p> <p>8.2 oz. \$1.49 Reg. \$3.45</p> <hr/> <p>TEK TOOTHBRUSHES</p> <p>Reg. 69¢ ea. 4/99¢</p> <hr/> <p>ACTIFED TABS</p> <p>24's Reg. \$4.59 \$2.69</p>	<p>BAND AIDS 3/4" 60's</p> <p>99¢</p> <p>BAND-AID plastic strips 60</p> <hr/> <p>Oil of Olay 4oz. Reg. \$6.99 \$4.99</p> <hr/> <p>375's Reg. \$3.98 \$1.79</p> <p>Q-tips</p>
--	---

Merrill Lynch Realty
Carll Burr, Inc.

Is Proud To
Announce That
We Are Expanding
Into Syosset.

Watch For Our
Grand Opening

For Details Call
681-2600

Merrill Lynch Realty / Carll Burr, Inc.

Steve's free ice cream hits town!

What better way to introduce you to Steve's ice cream—the one that's made fresh on the premises, in old fashioned churns—than to give it away.

And if you like, we'll hand blend the mixins of your choice—everything from fresh fruit and crushed cookies to nuts and candy to create The Mixin—the ice cream sensation that's hard to get off your windows.

A first name in ice cream.™

Free Ice Cream, Saturday, March 9
Turnbury Commons, Jericho Tpke., Woobury



Television producer, Miss Doris Bergman, left, and Jessica Garnets, right, Hicksville's "Annie". Students in the Gifted and Talented program were fortunate on February 28 to learn about many changes in the broadcasting industry. They heard anecdotes and saw video clips provided by guest speaker Miss Doris Bergman, a television producer from WNEW-Channel 5. Miss Bergman lectured and provided a question and answer period in the Hicksville Junior High School Auditorium in the afternoon. After her presentation the cast of "Annie" provided Miss Bergman with a preview of our April production. The Drama Club chorus was at their best, and our guest was happy to get a sneak preview.

Shamrocks Defeat Syosset

The Hicksville Shamrocks boys 1974 traveling soccer team bested the Syosset Cyclones 7-4 this past Sunday to bring their record to four wins, no losses in the Shep Messing Indoor Soccer League. It was a tightly contested event until the final whistle.

The team was led by the outstanding goaltending of Eddie Jacobsen and Brian Pine, who both took turns as offensive and defensive players with equal success. Brian Harkins, playing fullback, contributed three big assists including a beauty on an indirect. Jason Kingsley was a constant offensive force, scoring the Shamrocks first goal and then the go-ahead goal in the last quarter. David Lovato scored the Shamrocks second goal and last goal, while contributing strong, aggressive play from striker. Jared Jacobs was constantly on the ball, chipping in with two big goals while always making things "happen."

Joe Flanagan, playing fullback, was at his defensive and offensive best, forever keeping Syosset off balance while skillfully covering the field. Todd Meringoff scored one goal and displayed intelligent soccer know-how. Eric Blicher had his usual steady, aggressive game at fullback and wing. Ted Knoop had a strong game from wing and fullback. Gregg Grusso supported the team effort with gutsy play at wing and fullback. Matthew Pordum was in the thick of the action at both wing and striker with equal flair.

Great going, Shamrocks! Thanks to assistant coach Peter Knoop for a job well done!

In Memoriam

Martin Ginsberg

Former Assemblyman Martin Ginsberg 54 of Plainview died Friday.

He fought the polio that forced him to walk with crutches, never allowing it to deter his progress as a scholar at St. John's University and its law school and in a legal and political career that finally led to the State Legislature and then to a Nassau Family Court judgeship.

It was that fighting spirit and his humanity that hundreds of friends recalled at the funeral service Sunday in Woodbury for Mr. Ginsberg, who died Friday in Long Island Jewish-Hillside Medical Center after a long illness.

Mr. Ginsberg, a Republican from Plainview, served in the State Assembly, where he was chairman of the Health Committee from 1966 until 1972. As a legislator, he championed measures to improve health care and to aid the disabled.

His role as a legislator and his compassion as a judge were noted at his funeral Sunday by Rabbi Julius Goldberg of the Plainview Jewish Center, Rabbi Solomon and Morris Appelman and one-time Assembly colleagues including James Emery of Geneseo, the former minority leader, and Milton Jonas of North Merrick.

Jonas said yesterday, "Marty had an awful lot left to contribute to this world."

Mr. Ginsberg leaves his wife, Joan; a daughter Susan and two grandchildren.

Lee Avenue School Events

The Hicksville Council of PTA's held its 31st annual Founders Day Dinner at the Crest Hollow Country Club in Woodbury.

Lee Avenue honored three individuals who have devoted many years to the education and welfare of our children. Each of these women have given unselfishly of their time and energies.

Mrs. Betty Grayson, kindergarten teacher, has spent most of her twenty year career in Hicksville. A staunch supporter of PTA she has done much to promote parent and teacher relations and feels that the family is an important part of teaching.

Mrs. Grace Russo has a son in the fourth grade and another in his first year of junior high. Grace began at Lee as a pre-school teacher and later became active as a Class Mother and then with the PTA serving on many committees such as Publicity and Special Events. She has served as second vice president and currently chairs the Ways & Means Committee.

Mrs. Barbara Russo is the mother of a boy in fourth grade and a daughter in the junior high. One of Barbara's first activities at Lee was to help with pre-school. She has served the PTA in many capacities, from Class Mother to Treasurer of the Executive Board. At present Barbara chairs our Special Events Committee.

On February 28, our fourth grade students and teachers gave a program on American patriotism. Accompanied on two pianos by Dr. Lebow and Dr. Scher, the students performed songs from the American Revolution, the Civil War, World War I, World War II, some songs about life in America and some about Indians. There was a square dance demonstration complete with caller and fiddler. Some of the children portrayed famous people of the times and Mr. Skupinsky's class gave a choral reading. Mr. Magrane, Miss Paton, Mr. Savalas and Mr. Skupinsky all read famous works from the different eras. Miss Eisen did the art work for the show.

This program was in conjunction with the PTA February RIF Book Distribution and was designed to spark a deeper interest in America and its people.

A general meeting held at Lee on March 7 featured as guest speaker Mr. Alfred J. Peck, C.S.W., Executive Director of H.A.D. (Help - Aid - Direction).

A film was shown on the effects of drugs and alcohol followed by a lecture on drug use on Long Island and the agencies experienced with drugs in elementary schools. There was a brief question and answer period afterwards. This evening sponsored by the PTA was in connection with the National PTA Drug and Alcohol Awareness Week.

News From Road Runners

The Plainview Old Bethpage Road Runners Club is pleased to announce that the featured program at its March 19 open meeting will be a talk and slide/sound presentation by Stephen Mendelsohn, the Communications Director of the New York City Marathon.

A 26.2 mile run covering all five New York City boroughs, with 17,000 runners and literally millions of spectators, requires a flawless communications network that can insure instant communication between any part of the course and any other part of the course. Mr. Mendelsohn, a production engineer for CBS and an experienced amateur radio operator, is charged with keeping the entire Marathon staff informed of what is happening before, during and after the race. He has a unique insight into what goes on "behind the scenes" at the Marathon, and is prepared to share his experiences by means of a "professional" slide/sound show.

The March 19 meeting will be held at the Plainview Old Bethpage Public Library starting at 8 p.m. The general public is cordially invited to attend. For more information, call POBRRR President Mike Polansky at 433-0919.

LEGAL NOTICE NOTICE

POWER TEST INVESTORS LIMITED PARTNERSHIP,

175 Sunnyside Blvd., Plainview, New York 11803, Substance of Certificate and Agreement of Limited Partnership filed in Nassau County Clerk's Office on January 15, 1985. Business: Invest in and become limited partner of Power Test Realty Company Limited Partnership, and make a public offering of Partnership Interests in such Partnership. General Partner: CLS General Partnership Corp., a Delaware corporation, 175 Sunnyside Blvd., Plainview, New York 11803. Additional Limited Partners may be admitted. Term: Until January 10, 2085 unless sooner terminated. Capital Contributions:

General Partner may accept contributions of an aggregate of \$2,000,000, representing 5,000,000 Units of Partnership Interests at \$.40 per Unit. Initial Capital Contributions of Partners: General Partner-\$1.00, Limited Partner-\$99. No additional contributions agreed to be made, but additional contributions may be made. No withdrawal of contributions except as expressly provided in Partnership Agreement. All allocations and distributions pro rata to contributions. Transfer: Units representing Partnership Interests may be transferred. Continuation of Business: Majority-in-Interest of Limited Partners may continue business upon withdrawal of General Partner.

BN 2374
6x2/1, 8, 15, 22; 3/1, 3/8

Caring People Can Thwart Epidemic

By Effie Krogmann

Very recent studies have revealed that nationwide hunger has reached epidemic proportions. If that is true, the compassionate people of this area are already taking steps to alleviate that kind of suffering. Hicksville I.N.N. (Interfaith Nutrition Network) continues to swell its ranks and it appears that by April they will be able to start operating the local soup kitchen to provide meals for anyone who is hungry.

In the meantime donations of food, time, talent and material are needed. An organizational meeting is scheduled for March 11 at 11:30 a.m. at Redeemer Lutheran Church at 17 New South Road in Hicksville, for a further exchange of ideas and solutions to problems. Your help is needed. Please come. There will be no "epidemic" here!

For further information call the Rev. Theodore S. Grant at 938-8693, or Effie Krogmann 367-4835.

LEGAL NOTICE CERTIFICATE OF LIMITED PARTNERSHIP OF FIRST CAPITAL PENSION INVESTORS-II

This certificate of limited partnership is filed for FIRST CAPITAL PENSION INVESTORS-II, a New York limited partnership created to purchase mortgages and real estate, with its principal place of business c/o its Managing General Partner, FIRST CAPITAL PENSION ADVISORS CORPORATION, One Merrick Avenue, Westbury, New York 11590. Original limited partner is Gilbert T. Perlman, Esq., One Merrick Avenue, Westbury, New York 11590. Term of Partnership is until January 31, 2000. Partners' contributions are:
First Capital Pension Advisors: Corporation, \$100;
Gilbert T. Perlman, \$100;
TOTAL: \$200.

No future contributions required. Withdrawing limited partners will be repaid in cash. Partnership profits and losses will be allocated 81% to limited partners and 17% to Managing General Partner. Additional limited partners to be admitted by consent of Managing General Partner, and 1/3 of limited partners. No transfer of limited partner's interest without prior consent of Managing General Partner, and 1/3 of limited partners. Assignee will assume all obligations and be entitled to all benefits of assignor from date of assignment. Limited partners may remove Managing General Partner and substitute new Managing General Partner by 2/3 vote. In event of bankruptcy of Managing General Partner, partnership will terminate unless vote of 1/3 of limited partners selects successor Managing General Partner.
MIT 1772
6x2/22, 3/1, 8, 15, 22, 29

Mid Island Times & Levittown Times

Published every Friday by Litmor Publishing Corp.

Second Class Postage Paid at

Hicksville, N.Y. 11801

Telephone 931-0012 - USPS 346-760

81 E. Barclay St., Hicksville, N.Y. 11801

Postmaster: Send Address Change to

Mid Island & Levittown Times, 81 E. Barclay St.,

Hicksville, N.Y. 11801

Robert Morgan - Publisher. Yearly Subscription \$5.50

CALL INPUT 931-0027

24 hours a day! Answer

the Question of the Week

or express an opinion on

other topics of interest

to readers....

Libertarians Meet March 18

The Nassau Libertarian Club will present two talks at its March 18 meeting in the Jolly Swagman Inn, 100 W. Nicholas Street, Hicksville at 8 p.m. Mindful of the April deadline for filing tax returns, Club Treasurer William Stocker III, a C.P.A. will speak on "Personal Tax Reduction". Suffolk County libertarian Virginia Walker, a college instructor will speak on "Threats to Property Rights".

Mrs. Walker of Shirley, New York, formerly ran for the State Assembly and currently teaches at St. John's University. Her talk highlights the libertarian position supporting private property rights and their abridgment by government or others. She explains why libertarians

condemn such measures as eminent domain, zoning, land use restrictions, and other interferences with property rights as unjust and economically unsound. Moreover, libertarians point out that these methods have been used repeatedly to promote racism.

The Nassau Libertarian Club meets the third Monday of each month at the Jolly Swagman Inn, Hicksville, and can be contacted by writing Nassau Libertarian Club, Box 1729, Massapequa, N.Y. 11758. High School students and others interested in libertarian literature can write the Club for such information, which may help them in school work.

Students Seeking LibertyImmigrants

Did you arrive at Ellis Island before it closed in 1954? Would you care to share your personal experiences upon your arrival at Ellis Island? The students at Plainview-Old Bethpage Middle School would like to meet and talk with you.

We would appreciate your helping us celebrate the Statue of Liberty and Ellis Island Centennial.

Please call Mrs. Smyle or Mrs. Wolfe at 938-5400 x 350.



Hicksville Rotarians were pleasantly surprised with the unexpected appearance of Past President Edward Johnson who paid a visit from his home offices in Ohio. During his previous tenure in Hicksville, Mr. Johnson was an active member of the Hicksville Chamber of Commerce as well as the Hicksville Rotary Club and was very instrumental in the Hicksville Beautification project and the Gift of Life program. He is shown above, right, being welcomed by Rotary President Harry Peltz. (Official Rotary Photo by Joe DePaola)

SHOP-WISE DRUG STORE FREE GIFT WRAPPING

324 Jericho Tpke. Syosset
- 921-5260

Perugina Bacciarial Candy
Greeting Cards Gift Dept.

AIM TOOTHPASTE
Aim
8.2 oz. \$1.49 Reg. \$3.45

TEK TOOTHBRUSHES
Reg. 69¢ ea. **4/99¢**

BAND AID 3/4" 60's
BAND-AID plastic strips
99¢

Oil of Olay 4oz. Reg. \$6.99
\$4.99

ACTIFED TABS 24's
Reg. \$4.59
\$2.69

375's Reg. \$3.98
\$1.79

Q-tips



Steve's free ice cream hits town!

What better way to introduce you to Steve's ice cream—the one that's made fresh on the premises, in old fashioned churns—than to give it away. And if you like, we'll hand blend the mixins of your choice—everything from fresh fruit and crushed cookies to nuts and candy to create The Mixin—the ice cream sensation that's hard to get off your windows.

Steve's
A first name in ice cream.™

Free Ice Cream, Saturday, March 9
Turnbury Commons, Jericho Tpke., Woobury



**Merrill Lynch Realty
Caril Burr, Inc.**

Is Proud To
Announce That
**We Are Expanding
Into Syosset.**

**Watch For Our
Grand Opening**

For Details Call
681-2600

Merrill Lynch Realty Caril Burr, Inc.

Professional Services

FINANCIAL PLANNING

Thomas A. Kavazanjian
 Financial Consultant
SHEARSON LEHMAN/AMERICAN EXPRESS INC.
 275 Broad Hollow Road
 Melville, N.Y. 11747
 (800) 835-5501 (516) 753-8871
 Free Office Consultation

MUSICIAN

Herbert Bradensten, Jr.
 Director of Music & Organist
 The Community Church - East Williston
 The Mid-Island Singers - Hicksville
 Organ Recitals Weddings Private Instruction
 Piano, Organ, Theory
 3 Ingram Drive, Hicksville, N.Y. 11801 516-938-2388

Music Plus

KATHY BOYLE
 Keyboard, Guitar, Theory/Composition
 Instruction & Workshops
 Certified Teacher Registered Music Therapist
 (516) 248-2805

REGISTERED NURSE

Gerrienne Bodd, R.N., B.S.N.
 CHILDBIRTH EDUCATION ASSN.
 OF METROPOLITAN NEW YORK
 Childbirth Preparation
 Sibling Prep. - Breastfeeding
 The Birth Resource Center
 6 Tuxedo Avenue New Hyde Park, N.Y. 11040
 (516) 825-4756 (516) 741-4552

Barbara Andrews RN

Professional Skilled Home Nursing Care
 Experienced - Long & Short Term Rehabilitation
 Patient-Family Teaching Available To Travel
 516-483-2303

Lisa Kennedy, R.N., B.S.

Psychoprophylactic Preparation For Childbirth
 (516) 248-5189
 A.S.P.O. Certified Lamaze Method
 172 Fordham Street Williston Park, N.Y. 11598

STOCK BROKER

Robert S. Gerek
 of Garden City
 Offers Complimentary Financial Planning and
 Investment Consultation
PRUDENTIAL-BACHE SECURITIES
 445 Broadhollow Road
 Melville, N.Y. 11747
 (516) 248-1444 718-885-8515

Theodore P. Marohn

ACCOUNT EXECUTIVE
 Janney Montgomery Scott Inc.
 Members 83 East Main Street
 New York Stock Exchange Smithtown, NY 11787
 Other Principal Exchanges (516) 265-6600

Robert W. Koop

Financial Planning and Investment Services
DEAN WITTER REYNOLDS, INC.
 510 Broadhollow Road, 2nd Floor
 Melville, N.Y. 11747
 516-391-3455 212-517-3041

Jerome W. Nammack III

Account Executive
INDIVIDUAL'S SECURITIES, LTD.
 New Buildings - Alterations
 51-31 Queens Blvd.
 Elmhurst, N.Y. 11373
 (718) 639-2400 (800) 645-5000

ARCHITECT

Joel H. Cooper, AIA

Architect
COMMERCIAL & RESIDENTIAL
 New Buildings - Alterations
 Design - Planning - Supervision
 18 Ann Drive, Syosset, N.Y.
 516-821-3765

ALCOHOLISM TREATMENT

Breakthrough Center

Alcoholism and Drug
 Information and Counseling
 "Free Consultation"
 648 Franklin Ave., Garden City, N.Y. 877-2300

EDUCATION

The Tutoring Center

for college-bound high school students
 •Specializing in Reading •Writing & Study Skills
 •Math •Biology •Chemistry •Physics
 •Test Preparation
 Rita S. Guiney, M.S.
 Director (516) 741-3513

Computer Assisted**

College Find

College Admissions Counseling &
 Financial Aid Planning
 Frank V. Vivona, M.S.
 Licensed Counselor (516) 747-0584
 Home Office

INSURANCE



State Farm Insurance Companies
 Home Offices: Bloomington, Illinois

Joseph J. Berardino

Agent
 4 New Hyde Park Road Bus Phone
 Franklin Square, N.Y. 11010 516-488-3333

Stack Insurance Agency

Walter J. Stack, C.I.C., C.L.U.

Personal & Business Insurance
 175 Jericho Turnpike
 Syosset, New York 11791 516-921-6790

MASSAGE

(516) 747-3000 Ext. 328 - Office Days - Tues. - Sat.
 (212) 347-9174 - Home

Sharon M. Kleemann

Swedish Massage
 LIC #02612 Garden City Hotel
 Massage 45 Seventh St.
 By Appointment Garden City, N.Y. 11530

Massage Therapy
 Medical Massage

Back Ailments
 Sports Massage

Marcus Hansen

Marriott Hotel
 Health Club
 (516) 794-3800

Home Appointments
 (516) 294-2764



Our Children

By Willard Abraham
 Ph.D.

Q. I feel like I'm a voice crying in the wilderness, so please don't use my name in your column. I'm sure I'd have a lot of women pickingeting my house.

It's all because I think my wife should be at home with our young children (they are 1 and 3 years old). She is eager to get back into the work she does very well. Her reputation is well-established as an administrative secretary so whenever she makes herself available, a lot of people will want to hire her.

We could use the additional income (who couldn't?), but I think the top priority is our children's welfare.

I try to help out as much as I can when I get home from work, but I can't leave my job during the

day to help her out. She doesn't complain about the time she spends with the children. However, she is anxious to get a job, earn a living and be out of the house more.

What is your level-headed opinion on this matter?

A. In a moment I'll share my opinion, which is pretty specific. But first the proper approach for the two of you seems to be a compromise that will at least partially satisfy both of you.

Seeking a well-run preschool for your 3-year-old and setting a date when you both will be reasonably comfortable about leaving your younger one in competent hands may be topics you can discuss.

Another angle is related to the fact that more and more compa-

nies are establishing preschools where their employees work, so that either you or she might have a chance of periodic daily contacts with your children during your working days.

A basic opinion that I know I share with millions of others these days is this one: Both men and women have equal rights to work, earn a living (with equal pay for equal competencies) and take care of their children.

Within families there may be mutually acceptable variations to that theme, with stay-at-home or part-time working fathers or mothers. But the basic rights mentioned above still seem totally justifiable to me.

Q. We hear so much about X-rated movies (and R-rated ones too, for that matter) but what about X-rated books that are in great quantity in most supermarkets?

We have raised our 16-year-old daughter to respect good literature, and now look at the deluge of junk that can tempt her at every turn.

I don't know what to do about it. Do you?

A. It is a logical topic to discuss with her English teachers who probably put emphasis on other kinds of literature. If they are competent teachers they can perhaps make some of their choices at least as attractive as the current products. (Some of them probably will be acceptable current releases.)

From my own experience I know how a wonderful teacher brought excitement to us through books like "David Copperfield." Of course, she had an easier job than today's teachers. There was less television and movie competition.

Another route is through the model provided by parents. Your reading choices and the enjoyment you get from them will be observed.

We can't put blinders on our children and censorship is a questionable device to use. However, good teaching, parental example and balance in the free selection of youngsters may all be helpful approaches.

Professional Guide

ATTORNEY

John J. Sullivan

Attorney at Law
Wills - Estates
Closings - Corporations
Business Transactions and Criminal

1639 Hillside Ave.
New Hyde Park, N.Y. 11040 (516) 775-7109

Sperl and Reers

Attorneys at Law

Wills & Estates Real Estate Income Tax
General Practice Matrimonial Business

Williston Professional Bldg. No Fee Initial Consultation
105 Hillside Avenue Reasonable Fees
Williston Park, N.Y. 516-742-1000

Peter J. Eliseo

Attorney at Law

REAL ESTATE

585 Stewart Avenue, Suite 410
Garden City, N.Y. 11530

Admitted N.Y. & Fl. Bars (516) 227-2268

Tomao and Marangas

Attorneys and Counsellors at Law
215 Brown Street
Mineola, New York 11501

Negligence - Family Law
Business Law - Wills - Real Estate

(516) 746-2362

William H. Morris

Attorney at Law

390 North Broadway
Jericho, New York 11753
935-4477

Negligence - Estate & Wills - Real Estate

Charles A. McGarvey

Attorney at Law

Criminal Matters - Matrimonial - Accident Cases
Wills & Estates Real Estate

3000 Marcus Avenue Complete Legal Services
Lake Success Former Asst. D.A.
437-0182 28 Years Experience

PHYSICIAN

S. Shamsian, M.D.

Adult & Pediatric Urology
Kidneys, Prostate, and Bladder

Island Professional Center
100 Manetto Hill Road,
Plainview, Suite 210 (516) 933-1771

DENTIST

Jeffrey S. Rein, D.D.S.

Neal Seltzer, D.M.D.

GENERAL DENTISTRY

Free Consultation By Appointment
516-741-6202 89 Hillside Ave., Suite C
Williston Park, N.Y.

516-496-2974

Vishu S. Batheja, D.D.S.

GENERAL DENTISTRY

Free X-Rays and Exam for children
under 14 years

Office Hours By Appointment Only
Mon. & Fri. 8 a.m. - 7 p.m.
Tues., Wed., Thurs., 8 a.m. - 11 a.m.
128 Cold Spring Road
Bysseset, N.Y. 11791

ACCOUNTANT

Thomas D. Musnicki

Certified Public Accountant

516-593-7878 54 Maxwell Road
516-747-4723 Garden City, N.Y. 11530

(516) 248-5531

Frank W. DePietro

Certified Public Accountant

Financial Planning - Money Management
Estate Planning - Systems Analysis
Independent Audit - Accounting & Tax Services

1205 Franklin Avenue Garden City, N.Y. 11530

Thomas J. Fallarino

CERTIFIED PUBLIC ACCOUNTANT

(516) 1-4786 (516) 368-8848
181 Old Country Road 7 Atlas Way
Hicksville, NY 11801 East Northport, NY 11731

Andrew J. DeJoseph

Certified Public Accountant

(516) 748-2979 105 B-1 15th Street
Garden City, N.Y. 11530

**Michael T. McDonough,
M.B.A., C.P.A.**

Certified Public Accountant

610 Willis Avenue (Apt. 20)
Williston Park, N.Y. 11596
(516) 248-0002

John J. Marsala

Certified Public Accountant

Personal Financial Planning
Income Taxes

(516) 354-1484 30 Rintin Street
Franklin Square, N.Y. 11010

Byrnes & Baker

Certified Public Accountants

Est. 1913
Individual Tax Returns and
Full Accounting Services
at Reasonable Prices

286 Old Country Road 374 So. Oyster Bay Rd.
Mineola, N.Y. 11501 Hicksville, N.Y. 11801
(516) 742-4531

CHIROPRACTOR

Chiropractors

Dr. Elaine Graepel Moore

Dr. Robert F. Townsend

Hours By Appointment 374 So. Oyster Bay Rd.
Hicksville, N.Y. 11801
(516) 933-8240 Opposite Plainview Shopping Center

Family Chiropractic Office

541 Stewart Avenue, Bethpage, N.Y. 11714
Opposite King Kullen

Most Insurance Plans Accepted

DR. LORRAINE ROSE 516-938-1155
Chiropractor

PODIATRIST

Dr. Todd Rotweil

In Office Treatment of Corns, Calluses,
Bunions, Hammertoes, Ingrown Nails and
Warts - Children's Foot Problems
Medicare - Most Major Meds
Orthotics - Housecalls

Hempstead Professional Bldg.
131 Fulton Ave., Hempstead 11550
(Opposite A&S)

481-7414 481-7900

Foot Specialists

Stephen L. Pitcoff, D.P.M.

F.A.A.F.S.

Bruce A. Rudin, D.P.M.

A.A.C.F.S.

Podiatric Medicine and Surgery

By Appointment 101 Hillside Ave., Suite C
(516) 748-7245 Williston Park, N.Y. 11596

Maryanne Alongi, D.P.M.

Announces the Opening of Her Office
for the practice of
PODIATRIC MEDICINE AND FOOT SURGERY

at
228 7th Street, Suite 105
Garden City, N.Y. 11530

By Appointment (516) 248-9880

PHARMACIST

Andrews Pharmacy

Walter R. Andrews, B.S.

"Prescriptions Are Our Business"
All Union Plan Prescriptions Filled Here
248-7177

370 Hillside Avenue, Williston Park
2 blocks e/o Herricks Rd.

PSYCHOTHERAPIST

Option Center For Psychotherapy

Rita Corwin, M.S.W., A.C.S.W.
Emanuel Plesent, Ed.D., A.C.S.W.
Sylvia Rapp, M.S.W., A.C.S.W.

Individual, Couple, Family
Counseling for Stress, Crisis, Divorce Mediation
Psycho nutrition

(516) 747-1344
2 Hillside Ave., Suite E Fees Based On A Sliding Scale.
Williston Park, N.Y. 11596 Insurance Where Applicable.

PSYCHOLOGIST/Psychotherapists

**American Institute Of
Catholic Psychotherapists**

Individual & Group Psychotherapy • Hypnosis
Marriage & Family Counseling
Parent Education Training

1517 Franklin Avenue, Garden City 741-0988
Sliding Scale Fees All Insurance Accepted



**A Counseling Center
For Families & Children**

Parent Education Programs
Sliding Fee Scale
Insurance Accepted

101 Kensington Road
Garden City, N.Y. 11530
748-1709

Douglas L. Egan, Ph.D.

Clinical Psychologist

Suite F
99 Hillside Ave. By Appointment
Williston Park, N.Y. 11596 (516) 747-0650

Thomas J. Ferraro, Ph.D.

LICENSED PSYCHOLOGIST

Suite 99K
99 Hillside Ave. By Appointment
Williston Park, N.Y. 11596 (516) 248-7189
(The Professional Building)

Service Directory
931-0012 • PI 6-0240
or 294-8900

Home Improvements

Gutters & Leaders
CLEANED & TIGHTENED

Screening, Repair
& Leader Strainers
Licensed & Insured
WILLIAM SADD
GENERAL CONTRACTING
735-6854

"WROUGHT IRON"
Basement
Window Guards
\$38. Installed
Scroll Designs Available
FREE ESTIMATES
Ray's Welding
681-4045

Christie Win-Dor Supply Corp.
Div. of Christie Overhead Door Corp.
(40 Years in Business)

Complete Window & Door Replacement
Custom Sizes & Styles
Double Hung - Casement-Sliders
Bows-Bays - Garden Windows
"Stanley" Steel Entrance
Doors - Patio Doors
All work expertly installed and guaranteed
Free Estimates
License #H080502 B
Call 248-5610

SOLID VINYL & ALUMINUM SIDING



We Welcome Investigation!
•Gutters & Leaders
•Replacement Windows
•Storm Windows & Doors
•Roofing
GARDEN CITY ALUMINUM, INC.
220 Nassau Blvd
Garden City South
485-2200

Home Improvements

LaPollo & Henesy Contracting Co.
•Kitchens our Specialty
•Basements
•Bathrooms
•Painting
•Carpentry
•Complete Alterations
FREE ESTIMATES
Lic. in Nassau & Suffolk
Steve Peter
889-8544 422-1525

Contracting

Albert J. Contracting
Carpentry Specialists
all Phases of Home Remodeling
•Private Homes •Apartments
•Commercial Properties
Albert & Anthony
Lic#H-1835600000
516-485-1707

DECKS SOLAR HEAT
Custom Designed
To Your Specifications
SAVE \$\$\$
Free Estimates
Best Contracting Corp.
516-931-6022

Fences

Maffucci-Watras Fences Inc.
ALL TYPES OF FENCES
\$ STOCKADE SALE \$
100 Ft. of Stockade Fence
Free Gate with (4, 5, 6 ft.)
Value Over \$100.00
Quality Workmanship at Reasonable Rates
747-2078 742-0238

Electrician

AN ELECTRICIAN
WHEN YOU NEED ONE
K.J. KENNY, INC.
201 WILLIS AVE., MINEOLA
PI 6-7611
•Residential Specialists
Since 1945
Trouble Calls Promptly Answered

Energy Products

AGWAY ENERGY PRODUCTS
For All Your Energy Needs
Anthony G. Bouse
Long Island's Zone Manager
931-0407
351 Duffy Ave.
Hicksville

Exterminators

RAINBOW PEST CONTROL
Reasonable Monthly Service
Roaches - Rodent Control
Complete Exterminating Service
742-3227

Houses Restored

Give Your Home the New Look
Painting, Plastering, Stucco, Mouldings, Kitchen Cabinets Stripped & Refinished, Closets Redesigned, Cedar Lined or Built New • Old Doors & Windows Planed in/Flt or Properly or Replaced. Exterior Painting and Shutters.
Jim - Local Resident 775-8875

Landscaping

A & L Landscaping
Spring Cleanups
Weekly Maintenance
Creative Landscaping
Seed or Sod Lawns
Power Raking • Pruning
Tree Work Tree Spraying
Licensed
25 Years Experience
334-5543 586-0174

FICHTER'S LANDSCAPING

Foundation Planting
HEMLOCKS • SHADE TREES
•SODDING •TOP DRESSING
Est. 1931
Glen Cove Road, Carle Place
PI 6-1310

Maffucci-Watras Landscaping & Fences Inc.

•Landscape Design
•Weekly Maintenance
•Spring & Fall Clean-Up
•All Types of Fences
•Low Rates-Quality Work
•FREE Estimates
747-2078 742-0238

Limousine Service

A.S.A.P.
Limousine Service Ltd.
24 Hour Service
516-354-2775 - Days
516-437-7731 - Eves.
Member N.Y. Limousine Assoc. "The Professionals"

Movers

A & J Moving & Storage
LOCAL & LONG DISTANCE
Lic. & Insured
Piano Moving
Residential or Commercial
Packing & Crating
Upstate N.Y., Specialist
741-2657 Lic. T10405

Gentil Moving Services

for the gentle touch
Residential & Commercial
Licensed & Insured
D.O.T. #1941
Piano Moving
Packing & Crating
Cartons Available
741-0454

MUSIC

INTRODUCTORY OFFER
-A FREE MUSIC LESSON
Piano, Drums, Guitar,
Saxophone, Flute Clarinet
Call For Reservations
Limited Schedule
M & L Studios
AT All Music
433-6669
(formerly Straub Music)

Paul Effman Band Instruments

We Have A Complete Line of Quality Band Instruments
Flute, Clarinet, Saxophone, Trumpet, Trombone
New & Used
Plus All Other School Band Instruments
If It Is In A School Band Paul Effman School Music Service Sells It, Rents It, Repairs It
921-4543
Instrument Sales-Rentals
SYOSSET

Painting

Quality Exterior Interior Painting
Residential - Commercial
FREE ESTIMATES
Benjamin Moore Paint, Excellent Workmanship, Restoration, paint removal, windows caulked, glazed, carpentry, leaders & gutters, paperhanging-All types, plastering tape & spackling, sheet rock repairs, Surface cleaning. Fully Insured
WALTER REED 877-1060

Painting

Sal Triguera
Need A Painter?
Private Homes Our Specialty
Interior - Exterior
Painting & Paperhanging
Waterblasting
We use Quality Paints for Lasting Satisfaction
Our Exterior Work Includes Caulking, Scraping & Reputtying
FREE ESTIMATES
(Call) 379 3551

Interior Painting & Paperhanging

Since 1955
Fully Insured
"I take pride in my work, so will you."
Call 10 a.m. - 8 p.m.
931-4783
Call Anytime - 433-4538
Donald J. Castor

SCOLLO & SONS PAINTING

INTERIOR & EXTERIOR
High Pressure Water Blast
Exterior Cleaning
Stucco & Paper Hanging
Painting & Plastering
Fully Insured, with References
All Work Guaranteed
Free Estimates
Benjamin Moore Paints Used
957-2943

Printers

briefs
instant copy
resumes ads
flyers letterhead
manuals pads
envelopes bin
forms weddin
invitations
mailing
Garden City Printers & Mailers
Office & Copy Shop
659 Franklin Ave.
Garden City
Main Office & Plant
144 Cherry Valley Ave.
W. Hempstead
485-1600
Hours 8:30-5:30 Sat. 9:00-1:00

Travel

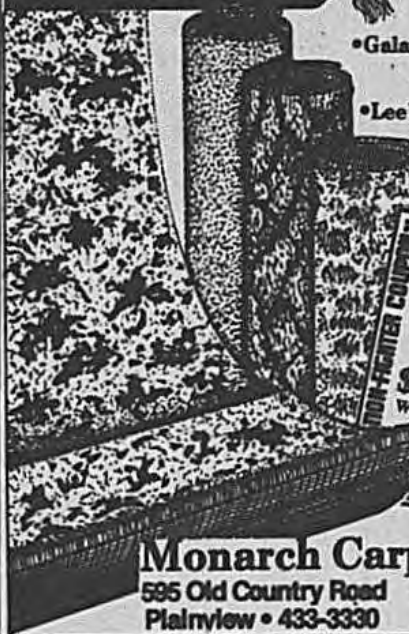
Cruises By Quality
Cruise Specialists
FREE
Speakers - Films Available
at your location
Call 516-822-2600
441 S. Oyster Bay Road
Plainville, N.Y.

DISCOVER PLAINVIEW

Whatever For You Need

Midway Between Syosset-Hickville-Jericho & Bethpage

Featuring A Large Selection of **REMNANT CARPETING**



Our 21st Year In Plainview!

Authorized Dealer

- Galaxy • Philadelphia
- Cabin Crafts
- Lee's • Wunda Weave
- Aldon

CARPET • TILE • LINOLEUM

COUPON
Armstrong Floor Cleaner
\$1.00 Off
With Coupon - LIT

Monarch Carpet Corp.
595 Old Country Road
Plainview • 433-3330

1/2 mile west of Seaford Oyster Bay Expy.

for a great vacation...
great values...

Kent Travel Service

First For The Best In

- Low Prices
- Experienced Courteous Service & Advice
- FREE Passport Photos For Our Clients
- Peak Period Air & Hotel Space
- Club Med Reservations Free Limo to J.F.K.
- Cruise Reservations

Open Mon.-Fri. 10 a.m. to 6 p.m.
Saturday 10 a.m. to 4 p.m.



Plainview
70 Manetto Hill Mall
Waldbaums Shopping Center
433-1330

Huntington
223 Route 110
Opp. Walt Whitman Mall
421-9000

Mention This Ad When Making Your Reservations To Receive A Surprise Gift

MARY & LILL CORSETIERES LTD.

CLEARANCE SALE

Select Group **50% OFF**

- Sleepwear
- Outerwear
- Beach Coverups

Expires 3-23-85

930 WOODBURY ROAD, WOODBURY, N.Y.

921-4075 HOURS: TUES. TO SAT. 10-5



VISION SHOPPES

Gift Certificate
1004 Old Country Road
(Morton Village Shopping Plaza)
PLAINVIEW
681-1161

Mon.-Wed.-Fri. 10-5:30
Tues.-Thurs. 10-7:30
Sat. 10-5

*not accepted with any other benefits or promotional material. One voucher per purchase.



\$10*
Towards the Purchase of Any Complete Pair of Prescription Eyeglasses Or Contact Lenses

- Eyes Examined
- Fashion Eyewear
- Personalized Service

DOYLE'S SOUTH BAY SERVICE STATION, INC.



Special While Supply Lasts
Below Dealer Cost -
Case of 12, Plastic Funnel Top **\$22.00**
Case 24 Cans **\$48.00**

755 So. Oyster Bay Rd.
Bethpage, N.Y.

931-8327

Corner of Stewart Avenue



DISCOVER PLAINVIEW

Whatever For You Need

Midway Between Syonnet-Hicksville-Jericho & Bethpage

GREEK ISLANDS

IMPORTED FOODS & GIFTS

667 A Old Country Road-Plainview. 822-7657

ANNOUNCING ALL HOME MADE ITEMS:

GALAKTOSOURIKO	NUT ROLL	KOURAMBIDES	RICE PUDDING	PIROSKA
KATAIFI	KOULOURAKIA	COFFEE CAKE	SPANAKOPHTA	BOUREKAKIA
BAKLAVA	MELOMAKARONA	LOUKOUMADES	TROPIKA	HOME MADE TARAMOSALATA

All Imported Cheese and Olives

GIFT SHOP: For Weddings, Baptisms, Christenings, Sweet 16, Showers and Anniversaries

STEFANA (Crowns)	KOUFETA
LAMBADES	STEFANOTHIKES
BOUBOUNERES	and an ASSORTMENT of GREEK GIFTS for YOUR HOME
BAFTISTIKA	

Business Hours:
open Monday - Thursday from 9-7
Friday and Saturday 9 to 9
and Sunday & Holidays: from 10 to 5

WE DO CATERING FOR ALL OCCASIONS
PLEASE CALL US, AND WE WILL PREPARE YOUR ORDER TO YOUR PLEASURE



ROBIN REALTY CO.

Serving the Public over 20 Years

433-6161

529 SOUTH OYSTER BAY ROAD, PLAINVIEW

Free APPRAISAL - Free Market Analysis - Free Gift

PLAINVIEW
OLD BETHPAGE
BETHPAGE
HICKSVILLE
JERICHO
WOODBURY
SYOSSET

LINGERIE TREE

One Of Long Island's Largest Selection Of Voluptuous Lingerie

G-Strings, Teddies, Waist Cinchers, Corsets, Enchanting Aids, Leather Goods, Body Oils, Fun Gifts & Men's Underwear + Extra Large Sizes & High Heeled Maraboo Slippers, Gift Certificates

The All Occasion Gift - A GIFT CERTIFICATE!

Master Charge - VISA
Mon.-Fri. 10-6 Sat. 10-5:30

732 Old Country Rd.
Plainview, N.Y. 433-9748

Ace Flower & Gift Shops

OF PLAINVIEW

ALL MAJOR CREDIT CARDS ACCEPTED
CREATIONS OF DISTINCTION

• IN PLAINVIEW SHOPPING CNTY.
353 SO. OYSTER BAY RD. PLAINVIEW
433-5565

TELEFLORIST

S & S Automotive Center Inc.

325 So. Oyster Bay Road
Plainview • 931-9262
1 Block North of Woodbury Rd.

Mobil NEW NO WAIT EXPRESS LUBE LUBE OIL FILTER UP TO 5 QTS. of Mobil #1

Customers Must Present Coupon Day of Repair Only
PLUS \$2.00 Discount on next oil change

Most Foreign & Domestic Cars
\$19.95

Discount Cigarettes	VALUABLE COUPON TUNE-UP
All Brands Regular Size	ELECTRONIC (Most Cars)
\$8.90	includes Points, Plugs, Condenser & All Adjustments
Carton, Tax Inc.	4 CYL 28.95
\$1.00	6 CYL 31.95
Pack, Tax Inc.	8 CYL 34.95
	Register Plugs \$3.00 Extra
	A/C - \$3.00 Extra

MASTER CHARGE • VISA • MOBIL CHARGE



Discount On All Social and Commercial Printing

- Wedding Invitations
- Birthdays
- Bar and Bat Mitzvahs
- Business Cards
- Sweet Sixteen
- Letterheads, etc.

We handle all your printing needs with Service and Reliability

Card Party

PRINTERS & STATIONERS

1020 Old Country Road
822-7416

Morton Village Shopping Plaza

DISCOVER

PLAINVIEW

Whatever For You Need

Midway Between Syosset-Hicksville-Jericho & Bethpage

Pick up Entry Blank
For FREE Plane Trip
To Atlantic City

Drawing To Be Held
In Store 3/11/85

Facets Fine Jewelers

would like to personally give you
an invitation
to its premier opening

"A Designers' Show" is

featuring the finest jewelry designers
in the country, including

Jose Hess,

who created this exquisite piece.

In Addition,

Robert Tephlin

is proud to introduce a new facet to Facets.

Ken Kelley,

formerly of Arthur E. Fishman,

Woodbury Commons.

These and many more are dedicated
to fulfill your every jewelry need.

We would be honored to have you as our guest

on Saturday, March 9, 1985

from 11-8

Facets Fine Jewelers

10 Washington Ave Plaza, Plainville

(516) 433-0175

Champagne and hors d'oeuvres
will be served.

Tammy Marshall Named NYS Gymnastics Champ

Tammy Marshall representing Nassau County and the Hicksville High School Varsity Gymnastic Team won the All-Around Title to become the 1985 New York State High School Gymnastic Champion with a total of 35.40. In the Finals, she also captured the Championships in Vaulting - 9.55, Beam - 9.35 and Floor - 9.35. She is an eighth grader at the Hicksville Junior High School. Besides training with the Hicksville Varsity Team and at Schnaars' Gymnastic Center she also maintains a 95 average and is a member of the National Junior Honor Society.



Tammy Marshall
1985 Gymnastics Champ

The Championships were held at Centereach High School on March 2. There were ten counties competing in the Team Championships. Nassau County came in third place with a total of 101.00 points. Members of the Nassau County team were: Sandy Beaulieu, Kelly Connors, Eda D'Antonio, Karen Friedman, Nancy Licursi, Tammy Marshall, Debbie Neu, Mindy Ottavio and Joan Turci. The Nassau Section

Vill Coordinator is Tara Casey-Marcy and the County Coaches for the State Meet were Lisa Amascato, Bob Hess, Andrew Morris, Tony Viollas and Michael Capone.



Nassau County Girls
Gymnastics Team

Long Range Comm. Second In Series

The Hicksville Board of Education's Long Range Planning Committee will host the second in a series of meetings to review the report prepared by the Long Range Planning consultants. The meeting is scheduled for Wednesday, March 13, at 8:15 p.m. at the Lee Avenue School for residents for the Lee Avenue and Fork Lane neighborhoods.

The consultant's report consists of an analysis of the district's population patterns and its school facilities and it is designed to provide data needed by the Board of Education and administration for future planning.

The first meeting, held in February for the East Street and Woodland Avenue neighborhoods, was well attended and

community members brought many interesting questions to discuss with committee members. The Long-Range Planning Committee invites all residents of the Lee Avenue and Fork Lane neighborhoods to attend the March 13 meeting and share the results of the consultant's study.

Seniors Club Rummage Sale

The Bethpage Seniors Club will be having a Rummage and Cake Sale with bric-a-brac items to be held at the Knights of Columbus Hall, 519 Central Avenue, Bethpage on March 20.

Also serving franks and sauerkraut, cake and coffee for sale.

LEGAL NOTICE PUBLIC NOTICE

NOTICE is hereby given, pursuant to law, that a public hearing will be held by the Town Board of the Town of Oyster Bay, Nassau County, New York, on Tuesday, March 26, 1985, at 10 o'clock a.m., prevailing time, in the Hearing Room, Town Hall, East Building, Audrey Avenue, Oyster Bay, New York, for the purpose of considering an application for a Special Use Permit pursuant to the Building Zone Ordinance of the Town of Oyster Bay as follows: PROPOSED SPECIAL USE PERMIT: Petition of JOHN DEMONACO and HENRY PRAUS, GRAND PRIX PERFORMANCE LTD. and JOSEPH FRISZELL, for special permission in a "G" Business District (General Business) to operate and maintain a car waxing business on the following described premises: ALL that certain plot, piece or parcel of land, situate at Hicksville, Town of Oyster Bay, County of Nassau and State of New York, which is described as follows: SAID premises being a rectangular shaped parcel of land located on the northwest corner of Broadway and Farm Lane having a frontage on the west side of Broadway of approximately 310 feet and a frontage of approximately 125 feet on the north side of Farm Lane. SAID premises also known as 500 South Broadway, Hicksville, New York, and being identified as Section 46, Block 31, Lots 62 and 63 on the Land and Tax Map of the County of Nassau. The abovementioned petition and map which accompanies it are on file and may be viewed daily (except Saturday, Sunday or Holidays) between the hours of 9 a.m. and 4:45 p.m., prevailing time, at the Office of the Town Clerk at Oyster Bay, Hicksville and Massapequa. Any person interested in the subject matter of the said hearing will be given an opportunity to be heard with reference thereto at the time and place above designated. TOWN BOARD OF TOWN OF OYSTER BAY. JOSEPH COLBY, Supervisor. ANN R. OCKER, Town Clerk. Dated: February 26, 1985. Oyster Bay, New York. MIT 1774 1x3/8



Special speaker, Mr. Tommy Holmes of the New York Mets came to Hicksville Junior High School on February 26. As a professional athlete for forty-eight years, Mr. Holmes has had many experiences which he shared with the students in the Gifted and Talented program. The current interdisciplinary theme is "Change". A number of the school's athletes attended the presentation. Following his informative talk, they attended a batting clinic in the gymnasium. Mr. Schack, one of Hicksville's coaches, remarked on the value of the session. He was pleased that Mr. Holmes was so generous with his time and expertise. Perhaps, we will see the Holmes' swing in Hicksville's games this season.

Pictured above, left to right: Mr. Tommy Holmes, Mr. Schack and student participant, John DellaRatta at the batting clinic.



Oyster Bay Town Councilman Douglas J. Hynes, center, presides over a ceremonial sign changing as part of the Mid-Island Area Irish American Club's St. Patrick's Day festivities. On hand for the occasion were, left to right, Bob Reynolds, Bill Martin, Jack Brush, President Ann Martin, Barry Lynch, Mary Keaveney and Helen Zanfardino.



Oyster Bay Town Supervisor Joseph Colby, right, administers the oath of office to the Town's newest Councilman Angelo A. Delligatti, as senior Councilman Howard T. Hogan, Jr. looks on. Delligatti was appointed to fill the seat vacated by Salvatore R. Mosca, who was elected to the Nassau County Family Court last November. An attorney from Massapequa, Delligatti is a partner in the law firm of Delligatti, Kaschak, Henderson and Julius, Esqs. Before entering the private practice of law, he served as an Assistant Nassau County District Attorney and as Director of Legislative Affairs for the Town of Oyster Bay.



SUNSET SWEETS

Ice Cream Shoppe
31 JACKSON AVENUE
SYOSSET,
(516) 921-3473

- Sedutto® Ice Cream
- Soft Creamy Ice Cream
- Today.. Frozen Dessert
- Columbo Yogurt®
- Tofutti®
- Party Ice Cream Cakes
Pies, Logs

LEGAL NOTICE
NOTICE OF HICKSVILLE PUBLIC LIBRARY ELECTION AND VOTE ON APPROPRIATION OF FUNDS HICKSVILLE UNION FREE SCHOOL DISTRICT

Hicksville, New York
NOTICE IS HEREBY GIVEN that pursuant to the resolution of the Board of Trustees of the Hicksville Public Library of Hicksville Union Free School District, Hicksville, New York adopted January 16, 1985, the Special District Election of the qualified voters of this School District for the Hicksville Public Library Election and Vote on appropriation of funds will be held on April 17, 1985, between the hours of 12 Noon P.M. (E.S.T.) and 10:00 o'clock P.M. (E.S.T.) in the seven election districts at the Hicksville Public Library, for the purpose of voting upon the following proposition(s):

PROPOSITION NO. 1

Shall the Library Budget for the school year 1985-1986 adopted by the Library Board be approved and a tax be levied on the taxable property of the District in the amount of such budget less sums received in the form of State and Federal Aid and from any other sources, all pursuant to the pertinent provisions of the Education Law?

NOTICE IS FURTHER GIVEN that nominating petitions for the office of member of the Board of Trustees of the Library must be filed with the Clerk of the School District no later than thirty (30) days before the Special Meeting, said date being March 18, 1985 between the hours of 9:00 a.m. and 5:00 p.m. Separate petitions shall be required to nominate a candidate. Each petition shall be directed to the Clerk of the School District, shall be signed by at least 25 qualified voters of the District (the same being at least 25 qualified voters of the District or two percent (2%) of the number of voters who voted in the previous Library election, whichever is greater), shall state the residence of each signer, the name and residence of the candidate, and include at least the length of the term of the office. Forms of petitions for Library Board Members may be obtained from the Clerk of the School District and at the Hicksville Public Library.

The following vacancy is to be filled on the Board of Library Trustees: **Abraham Fishman**, Office of Member of Board of Library Trustees, 5 year term ending June 30, 1990.

NOTICE IF FURTHER GIVEN that personal registration and Election Districts have been established in the School District, that no person shall be entitled to vote at the Special Meeting whose name does not appear on the register of the School District unless such person is registered under the provision of Section 5-612 of the Election Law and that those qualified to register and vote shall do so in Hicksville Public Library, according to the School Election District in which they reside.

NOTICE IS FURTHER GIVEN that copies of the estimated expenses of the

LEGAL NOTICE

Library for the year 1985-1986 may be obtained at the Library and each school house in the District on and after April 3, 1985, on any weekday from 9:00 a.m. to 4:00 p.m. and that any other propositions to be voted upon are available for inspection by any taxpayer in the District at the Library daily except Saturday and Sunday on and after April 3, 1985, between 9:00 a.m. and 4:00 p.m.

NOTICE IS FURTHER GIVEN that the Board of Registration shall meet in the **HICKSVILLE PUBLIC LIBRARY** for the seven (7) Election Districts described below on: April 3, 1985 from 3:00 p.m. until 8:00 p.m. (E.S.T.)

Any person shall be entitled to have his name placed upon such register provided that at such meeting of the Board of Registration he proves to the satisfaction of such Board of Registration to be then or

THEREAFTER entitled to vote at the Library meeting or election for which such register is prepared. Said register will be filed in the Office of the Clerk of the District on April 3, 1985, and will be open for inspection by any qualified voter of the District from 9:00 a.m. to 4:00 p.m. on any weekday from April 4, 1985 up to and including April 17, 1985. Residents who voted at an Annual of Special Meeting of the District within four years from the date of the current Special Meeting, or who registered within that time need not register to be eligible to vote at the Special Meeting. Residents otherwise qualified to vote who are registered under the provision of Section 5-612 of the Election Law need not register to be eligible to vote at the Meeting.

NOTICE IS FURTHER GIVEN that during the voting hours on April 17, 1985, the Board of Registration will meet in the **HICKSVILLE PUBLIC LIBRARY** to receive registration for the ensuing year.

SCHOOL ELECTION DISTRICTS

The boundaries of the School Election Districts, as adopted by resolution of the Board of Education and the place in each Election District are as follows:

Election District No. 1

Burns Avenue School
On the East: Broadway, from the District's North Line, to the intersection Jerusalem Avenue and Broadway, continuing South along Jerusalem Avenue to the intersection of Jerusalem Avenue and the Long Island Railroad.

On the South: The Long Island Railroad, from Jerusalem Avenue to the District's West Line.

On the West: The District's West line from the Long Island Railroad to the District's North Line.

On the North: The District's North line from the District's West line to Broadway.

Election District No. 2

East Street School
On the East and North, Miller Road as projected to the District's North line, South along said Miller Road to

LEGAL NOTICE

Ronald Avenue, then East along Ronald Avenue to Woodbury Road, then North-east along Woodbury Road to Ardsley Gate, then Southeast through Ardsley Gate to Dartmouth Drive, then Southwest and South through Dartmouth Drive to its intersection with Haverford Road, then East to the intersection of Haverford Road and Berkshire Road, then East along Berkshire Road to its intersection with Columbia Road, then East along Columbia Road to the District's East line, then South along the District's East line to the Long Island Railroad.

On the South and Southwest, along the Long Island Railroad, from the District's East line southerly point, to the intersection of the Long Island Railroad and Jerusalem Avenue.

On the West: Broadway from Jerusalem Avenue to the District's North line.

On the North: the District's North line from Broadway to Miller Road, as projected to said line.

Election District No. 3

Woodland Avenue School
On the North, Northeast and East along the District's North line, from Miller Road, as projected to the District's North line, to the District's East line.

On the East: South along the District's East line, from the District's North line, to Columbia Road.

On the South and West: Columbia Road, from the District's East line, West to Berkshire Road, then West along Berkshire Road into Haverford Road, and continuing West on Haverford Road to Dartmouth Drive then North and Northeast along Dartmouth Drive to Ardsley Gate; then Northwest through Ardsley Gate to Woodbury Road, then Southwest along Woodbury Road to Ronald Avenue, then West along Ronald Avenue to Miller Road, then North along Miller Road and continuing thereon as it is projected, to the District's North line.

Election District No. 4

Lee Avenue School
On the East-Northeast, the Long Island Railroad, from its intersection with Old Country Road, to the Southerly point of the District's East line.

On the South, the District's South line, from the Long Island Railroad, Southwesterly into Michigan Drive, then South along said District line to the Hempstead Township line, then Northwest along the District's South line to Jerusalem Avenue.

On the West and North, along Jerusalem Avenue, from the District's South line, to Salem Gate, then West along Salem Gate to Salem Road, then North to Harkin Lane, then Northwest along Harkin Lane to Division Avenue, then North along Division Avenue to Glenbrook Road, then Northwest along Glenbrook Road to Newbridge Road, then Northwest along Newbridge Road to Old Country Road, then East along Old Country Road to the Long Island Railroad.

Attention Sport Rec. Directors

Reservations are now being taken for our annual Camp Directory which will appear in our weeklies for the 4 weeks of April.

The deadline for all copy is Friday, March 29. Please contact our Garden City office at 294-8900 and ask for Teddi.

Election District No. 5

Fork Lane School
On the East: Jerusalem Avenue from Salem Gate, to the District's South line.

On the North: Salem Gate, West from Jerusalem Avenue, to Salem Road, then North along Salem Road to Harkin Lane, then Northwest along Harkin Lane to Division Avenue, then Northwest along Division Avenue to Glenbrook Road then West along Glenbrook Road to Newbridge Road.

On the West: Newbridge Road, from Glenbrook Road on the North, to the District's South Line.

On the South: the District's South Line, from Newbridge Road, on the West, to Jerusalem Avenue on the East.

Election District No. 6

Dutch Lane School
On the East: Newbridge Road, from Elmira Street, to the District's South line.

On the South, the District's South line, from Newbridge Road, on the East, to the District's West line.

On the West: the District's West line, from the District's South line to Arrow Lane, as said Lane is projected West to the District's West line.

On the North: from Arrow Lane, as projected to the District's West Line, East and along said Arrow Lane, to Levittown Parkway, then South along Levittown Parkway to Beech Lane, then East along Beech Lane to Blueberry Lane, then South along Blueberry Lane to Elmira Street, then East along Elmira Street to Newbridge Road.

Election District No. 7

Old Country Road School
On the North and Northeast: the Long Island Railroad from the District's West line to the intersection of the Railroad with Old Country Road.

On the South and East: Old Country Road from its intersection with the Long Island Railroad, Westerly to Newbridge Road, then Southwest along Newbridge Road to Elmira Street, then West along Elmira Street to Blueberry Lane, then North along Blueberry Lane to Beech Lane, then West along Beech Lane to Levittown Parkway, then North along Levittown Parkway to Arrow Lane, then West along Arrow Lane, and as projected to the District's West line.

BY ORDER OF THE BOARD OF TRUSTEES OF HICKSVILLE PUBLIC LIBRARY OF HICKSVILLE UNION FREE SCHOOL DISTRICT
Hicksville, Town of Oyster Bay, N.Y.
Jane A. Wilder
District Clerk

MIT 1771
4x2/22, 3/8, 22, 4/5

News From Hicksville Library

The Hicksville Public Library will show the film "Alice's Restaurant", on Friday, March 8, at 8 p.m. in the Community Room of the Library. Taking its comic tone and basic story line from the Arlo Guthrie Song, "Alice's Restaurant" is an exploration of the communal spirit and lifestyle of the mid-Sixties hippie generation. Director Arthur Penn uses a gently wry touch to illustrate the contradictions and ironies of the counterculture. There is no charge for admission and everyone is invited. Children admitted with parent only.

The Hicksville Public Library and the Town of Oyster Bay, Cultural and Performing Arts Division will present a concert on Sunday, March 10 at 3 p.m. in the Community Room of the Library. The guest artists will be the Long Island Brass Guild. This concert is Free and everyone is invited.

The Nassau County Bar Association, Inc. will provide a lawyer to speak at the Hicksville Public Library on Thursday, March 14 at 8 p.m. in the Community Room of the library. His topic will be: Condominiums and Co-ops. Mr. William D. Siegel, Esq. will cover advantages and disadvantages of purchasing condominiums and cooperatives, both as an owner-occupant and investor and special legal treatment of condominiums and cooperatives under New York State law. Questions and answers to follow. Mr. Siegel's firm specializes in real property tax reduction. They are members of Community Associations Institution, umbrella group for condominium and cooperative boards and real estate professionals. This program is free and everyone is invited.

Atlantic City Day For ACS

A day in Atlantic City at the Trump Plaza on Sunday, March 10, is being sponsored by the Plainview/Hicksville Unit of the American Cancer Society.

The Express Bus leaves Morion Village Shopping Center (Rex Place Bus location) at 9:30 a.m. Park on local street.

To reserve your place, please send \$17, tax-deductible check, in accordance with IRS regulations, to American Cancer Society, 6 Floral Drive East, Plainview, N.Y. 11803.

Receive \$10 quarters, plus \$12.95 buffet. Please specify smoking or non-smoking section on bus. Buses will be loaded in same order as checks are received.

For further information, call 349-9199 or 694-3274.

GRANDPARENTS - Send in your grandchildren's photos and enter our "World's Most Beautiful Grandchildren" contest. See the Notice column in the Classified Section for more information or call 931-0012.

Honor Rolls At Bethpage H.S.

Mr. George C. McElroy, Principal of the Bethpage High School, announces that the following students have earned recognition on the Gold and Blue Honor Rolls of the Bethpage High School on the basis of their achievement in the second quarter of the school year.

The high school staff is proud of them and wishes them continued success in the coming school year.

Gold Honor Roll 9th Graders

Bernard Alerie, Linda Anselmo, Bradley Astrowsky, Stephen Bolija, Doreen Bucci, Diane Herbert, Barbara J. Jaeger, Michelle Kramer, Lesley Leibowitz, George Lombardo, Vincent Luca, Mary McCaffery, Robert Morgan, Kim Priller, Pamela Rappaport, Louisa Ricotta, Elena Rosen, Ann Marie Schmidt, Anni Sharma, Eileen Schinnick, Kathryn Sullivan, Scott Wells.

10th Graders

Saba Ashraf, Joanne Aumuller, Robert Bohleri, Vincent Cufingasan, Shalinee Chawla, Michael Cooper, Renee Fournier, Christopher Friedel, Michael Gavilan, Glen Ha, Karen Jaeger, Anawinder Kaur, Joanne Kraus, Richard Kudler, Andrew Kumm, Carmela Marrone, Staci Miller, Joanne Pappas, Michael Passands, Carol Rubenstrunk, Theresa Schaefer, Laurel Stomovitz, Laura Sylvester, Sabrina Tellalian, Michael Trokenheim, Dancan Venezia.

11th Graders

Mario Arbore, Debra Bach, Kevin Burke, Michael Cascio, Denise Chan, Edward Conlon, Michele Dellaroeca, George Dikeman, Eian Dunne, Michael Faber, Audra Famiglietti, Patrick Formato, Oliver Giannotti, Angela Grimaldi, Amy Gulkis, Patti Hantman, Aaron Ilan, Dara Jaffee, Charles Lembo, Lisa Loser, Loren Marks, Jennifer Matulewicz, Mary Jane Muhlbach, Shari Nudelman, Enrico Panno, Thomas Pizzuti, Douglas Saum, Richard Schrage, Stacy Schuman, Lisa Strazzeri, Michael Tretola, Christine Ungania.

12th Graders

Frank Adam, Howard Babushkin, Karen Bauer, Bradley Baumdell, Jennifer Blades, Karen Buck, Michele Center, Lisa Davison, Michelle Dobrawsky, John Elisso, Perry Fishkind, Michael Formichelli, Debra Franzese, Kathleen Frisbie, Michael Gardina, Jill Goldstein, Adam Heiko, Eric Hillmann, Mark Jacobson, Lynn Jaeger, Tammy Johnson, Joyce Jumawan, Jill Kaplan, Cheryl Lein, Annmarie Lepore, Claudia Levin, Ronald Louis, Raymond Mangibin, Christina Marinuzzi, Constance Masterson, Christine McAuliffe, Patrick McCaffery, Howard Mertz, Peter Mikulus, Shirleyann Minetti, Catherine Moffa, Donna Monten, Michael Mulcahy, Suzanne Murphy, Michele Nacewicz, Joseph Neto, Monica Newu, Robert Notaro, Patricia O'Connor, Michele Papushi, Donna Petrulli, Jane Portugal, Elizabeth Portuese, Daniel Robinson, Richard Romito, Joseph Ryan, Ellen Schiff, Jay Schneider, Karen Schrage, Paula Signoriello, Jordana Stomovitz, Deborah Louise Vigliotti, John

Waka, Patricia Watson, Jennifer Wilkeyson

Blue Honor Roll 9th Graders

Kenna Agdorn, Tami Auer, Brett Baumdell, Andrew Borushik, Donna Bryers, Beth Burkel, Allen Cohen, Joseph Cole, Michael Conway, John Daleo, Pamela Dambrosio, Nicole Didonato, Noe Dileo, Heidee Feinman, Frank Gaglione, Frank Genovese, Rosemary Giannacco, Steven Gilhuley, Stefanie Goldstein, Thomas Gozaloff, Eric Gulkis, Mary Elizabeth Higgins, Charlene Jackson, Robert Jacobs, Ellen Juvet, Andrew Kowaski, Steven Koakoff, Christine Lenahan, Maureen Lenihan, Josephine Luz, Nikki Markakis, Daneil McAuliffe, Mark Melazzi, Lisa Menzies, Barbara Minisini, Greg Mondelli, Michael Novotny, Hope Nudelman, Lori Ozer, John Parrett, Patrick Peace, Theresa Peluso, Maria Perrillo, Heidi Pichler, Reena Popiel, Frank Reda, Thomas Rufrano, Christopher Settino, Matthew Singer, Robert Sonntag, Jennifer Tague, Nicole Tobin, Rosemary Ulrich, Steven Vornea, Steven White, Martin Words, Edith Yavarian, Jeanne Yonkers, Lisa Zullo.

10th Graders

Eric Alcantara, Donna Bennett, Gregory Berardo, Josh Bernstein, Elisa Bond, Michelle Boulianne, Eleanor Brosnan, Steven Bunker, Rosa Caruso, Frank Catrone, William Ciaburri, James Cirola, Christine Conway, Andrea Corrales, James Doerbecker, Jeffrey Donlon, Marcel Doyno, Andrew Draghi, Dina Ann Fahr, Couris Nick Fila, Justine Franke, Patricia Frisbie, Joseph Garone, Helene Greenberg, Laura Hawksworth, Deborah Imperial, Joann Iernia, David Johnson, Daniel Keating, Marc Kneller, Joanne Larosa, Thomas Lillis, Todd Lustig, Deboprah Maini, Carolyn Manz, Jacqueline Maury, Heather McCarthy, James Melledy, Karen Miller, Ivy Mora, Catherine Mulligan, Linda Niglia, Michael OMara, Patrick Pendas, Christine Preziosi, Rocio Quinn, Robert Reale, Ann Marie Reilly, Patrick Rhatigan, Karen Ripke, Linda Rose, Tracey Ruland, Michael Scarangella, Robert Schreiber, Eric Schwabe, Gregory Spampinato, Deena Stampfel, Kenneth Stolls, Joseph Tarry, Edward Tom, Carmelina Vivolo, Kenneth Weiner, Debra Whitman, Eric Wolkoff, Michael Zinkel.

11th Graders

Diane Armand, Lisa Berardo, Glenn Birkenfeld, Tracey Boyle, Debbie Brodsky, Frank Brown, Scott Brunner, Jane Cassagio, Denise Catanese, Danielle Catapano, Susan Chesnovitz, Wayne Costigan, Robyn Coyne, Laura Jean Croan, Robert D'Alessandro, Rosemarie Debobes, Carmina Di Iorio, William Dion, Madelyn Dorb, Debbie Dorsch, Christine Dugre, Michelle Einbinder, Janet Emken, Sandra Fillingier, Michael Gilhuley, Joseph Goldberg, Warren Goldberg, David Golden, John Gozaloff, Matthew Grandinetti, Gaetano Greco, Jamie Greco, Patrick Hearty, Gloria Honigmann, Carmel Ann Iacintino, Sharon Imbrale, Diane Joannou, Eva Karagiannis, Robert Kowalski, Cynthia La Rosa, Adrienne Lamattina, Sean Lenihan, Christine Lutz, Aleck Martigue, Patricia Meehan, Wesley O'Brien, Cindy Ogden,

Ruth Panzer, Angela Patini, Neven Pesa, Shawn Peters, Jodi Ramis, Andrea Rauch, Steven Schassberger, Joseph Schiavone, Sharon Schwartz, Herbert Stalzer, Laura Strowbridge, Michelle Stuzin, Richard Summa, Lorraine Taverni, Amy Tedesco, Tracey Triandafilou, Mark Ungania, Christine Varriale, Jeffrey Verschell, Sandra Vrejan, Marc Waxler, Michele Yigdal, Steven Youngblood.

12th Graders

Rabbia Ashraf, Lori Auer, Maria Barbieri, Amy Bayer, Kristine Benasutti, Deborah Blumh, Peter Boulianne, Carol Boyce, Christopher Casiero, Alessandra Cavalluzzi, Michele Ciavarella, Clelia Curro, Theresa Deangelo, Marc Domroz, Michael Dubritz, Suzanne Dugre, Theresa Familio, Charles Farrell, Joanne Fernhoff, Robert Formichelli, Ann Fowler, Danny Gould, Debra Guercino, Robert Kahane, Regina Kelly, Susan King, Helen Kraguras, Karen Krokoff, Yvonne Kwok, Joie Ann Lapolla, Renay Lloyd, Martina Louwers, Mark Lubelsky, Elizabeth Mastrella, Margaret McCormick, Debra Melkun, Wayne Metzler, Danielle Minogue, Madeline Morello, Michelle Noren, Ronald Paola, Donna Phillips, Debra Plotkin, Irene Quinones, Alexander Rokowitz, Kim Romano, Cynthia Ryan, Laurie Ann Salamone, Robert Sanfilippo, Patricia Savarese, Eric Schmitt, Alan Shushan, Michael Sinacore, Cynthia Spidell, Mary Veras, Dara Westlake, Andrew Whalen, Nicole Woros, Marie Yadaseska, Diane Yarcel, Donna Yarcel.

News From Bethpage Library

Continuing Registration for Winter-Spring Storytime

Children's librarians at the Bethpage Public Library are now registering additional youngsters for Pre-School Storytime. Those already in the program may remain with us until the end of our storytime sessions in May. Registration is also being taken for Tiny Tots Time.

Weekly Pre-School Storytime sessions are held on Thursday and Friday mornings from 10:30 to 11:15 a.m. for youngsters aged 3½ to five years who are not yet in kindergarten and who have had their third birthday before August 30, 1983. The program includes stories, songs, puppets, films and games.

Registration is also being taken for Tiny Tots Time, a series of four Wednesday morning programs per month for the very young (ages 2½ to 3½). Tiny Tots is held from 10:30 to 11 a.m. and includes stories, finger plays, puppets, songs, films and discussion of materials for the youngest. Children should have had their second birthday before August 30, 1983 and a parent must be in attendance at all times.

Saturday Storytime for youngsters in grades K through three will continue each Saturday morning through May from 10:30 to 11:15 a.m. This program includes stories, songs, puppets, magic, films, games and lots of fun. No registration is required. Participation in all of the storytime programs is limited to residents of District #21. For further information, please call 931-3907.

Film Classic "Toby Tyler" at the Bethpage Public Library

How would you like to run away to the circus - to live under the glamorous big top with lions, elephants, clowns, acrobats? On Saturday, March 23, the Bethpage Public Library will show "Toby Tyler" (color 93 min.) for youngsters in grades K through six.

Come on over and join young Toby who leaves his hard-working uncle for the fascinating world of circus glitter and excitement. There he makes friends with a mischievous monkey and performs a daring bareback act with high stepping circus noses. But Toby finds that life is not always wonderful, even with the greatest show on earth—when he meets danger, heartbreak and harrowing high adventure. Here is a thrilling screen adaptation of the beloved novel by James Otis.

Showtime is 2 p.m. and tickets are now available in the Bethpage Children's Room for all school-age youngsters who reside in school district #21. For information call 931-3907.

Dazzling Math Magic at the Bethpage Public Library

The tricks of a wizard! On Saturday, March 16, Martin Schnall, Instructor in Mathematics, will present "Dazzling Math Magic" for youngsters in grades 3-6 at the Bethpage Public Library.

Young people will learn to wave their mental magic wands and discover the fascinating secrets of instant math magic to mystify friends, families and teachers. Can you add each and every number from 1 to 20, 1 to 100, 1 to 1000 - in a mere second, or predict accurately how many

times a coin will come up heads or tails? There is a special fun gift for all attending.

Martin Schnall has been an instructor in mathematics with the New York City Schools for over fourteen years. He holds a master's degree from St. John's University, specializes in the Jr. High level, and enjoys teaching youngsters of all ages.

The program will begin at 2 p.m. and registration is now being taken in the Bethpage Children's Room for all youngsters who reside in School District #21. For further information call 931-3907.

"The Fabulous Young Amadeus" at the Bethpage Public Library

On Saturday, March 9, pianist Joyce Anne Liebman will present a unique and highly entertaining portrait of the life and music of the young Wolfgang Amadeus Mozart at the Bethpage Public Library. The program, designed for youngsters in grades 1-6 and their parents, will include exciting demonstrations on piano and harpsichord, an offbeat introduction to opera, the creation of an instant orchestra, a rousing vocal chorus, a colorful film on the life and times of the young Mozart.

Youngsters will participate in a fascinating variety of musical activities, all in the style of Mozart. They have been prepared to illustrate just how the master created his enduring magic. In addition, young people will combine music, art and drama to design their own mini-masterpieces and have a lot of glorious fun.

Joyce Ann Liebman has performed at Lincoln Center for the Performing Arts, and in concert halls throughout the Metropolitan area. She is Music Director of the Connoisseur Chamber Ensemble for piano and strings that plays on Long Island and in New Jersey and Connecticut. Ms. Liebman is also a music educator of note who has appeared with her students at the White House, the Governor's Mansion in Albany, and other important places.

The program will begin at 2 p.m. and tickets are now available in the Bethpage Children's Room for young people and parents. The program is co-sponsored by the Town of Oyster Bay Department of Community Services.

For further information, please call 931-3907.



Cosmo Petruccio, R.Ph., of Hicksville was named Employee of the Month for February at Nassau Hospital in Mineola.

"He has added a measure of pleasure to the lives of many, says his co-worker, Margaret Smith, who nominated him. Moreover, his contributions extend beyond the walls of Nassau Hospital and into the larger community as well.

A very dependable and willing employee, Mr. Petruccio serves as a pharmacy resource person for the medical staff and the nursing department at Nassau Hospital. He has been employed at the hospital since July 1977 and also teaches pharmacology at Adelphi University School of Nursing.

Mr. Petruccio volunteers much of his time to community organizations, giving lectures on medications. One of the groups that enjoys his regular appearances is the Heart Club, where he speaks on cardiovascular drugs.

An added measure of pleasure that Mr. Petruccio gives is his gift of yellow roses, grown in his own garden. Last summer he distributed more than 500 of them to nursing units in the hospital.



The Hicksville chapter of the Knights of Columbus sponsored its annual Free Throw Championship. At the second round, Hicksville Junior High School basketball player Anthony Schraff won first place honors with a record of 19 foul shots out of 25. Anthony has won a plaque for his efforts already. Congratulations to Anthony from the Sports program at the Junior High School.

Willet Students Study Whales

In response to students' enthusiasm about the topic, January and February were designed as "Months of the Whale" at Willet Avenue School. This involved planning and executing an interdisciplinary program of social studies, science, music, art and literature, coordinated by Library-Media Specialist Rosemary Barrow.

Ordinarily, the curriculum correlation of this program would include the study of whales as mammals in second grade, and the whaling industry off Long Island and whales as endangered species in fourth grade. As planning progressed, it was decided to include other grades as well.

Preparations began during the last school year, with the ordering of books, posters and films on marine mammals, conferences with the cooperative staff of the Cold Spring Harbor Whaling Museum, individuals who could supply advice and assistance. Willet Avenue's in-house expert, Special Education Teacher Carolyn Halperin, began work on an extensive original slide program. Mrs. Halperin took many of her own slides while whale-watching off the Mexican Baja Peninsula, and reinforced them with specially prepared individual packets of study and classroom activity material for every teacher and child in the school.

When the time finally arrived to launch the project, students received basic instruction in their classrooms and through films and literature in the Media Center, where an area was set aside for an exhibit of whaling pictures and related reading material. Some classes visited the Whaling Museum. Artistically included students volunteered to prepare posters. Mrs. Halperin presented two "Special Event" programs—one on the K-3 grade level, and another more advanced for upper grades. Following each of these, the forty-five member Willet Avenue chorus, under the Direction of Music Teacher Theresa Sgammato, sang a number of lively sea chanteys and then all students joined them in a sing-along. This added historically based music to the scientific theme.

In the Media Center, students examined samples in a display of sperm whale teeth and delicately executed examples of scrimshaw borrowed from a variety of cooperative donors. Then, using white plastic as a substitute for whale bone, they had the opportunity to practice the technique themselves under the skilled guidance of art teacher Lynne Carpenter.

Through this enrichment program, the students gained an increased awareness of the many species of whales, their distinctive physical characteristics and unique behavior patterns, their importance in the history of our area. They also developed some sense of the mystery confronting scientists concerning the intelligence and communication systems of these giant mammals, and the need to preserve them from extinction.



Willet Avenue teacher Carolyn Halperin and students Jason Mandra and Jared Trapasso show some of the literature that accompanied Mrs. Halperin's program on whales.



Third grader Tommy Coffey brought in a sperm whale's tooth that belonged to his grandfather. Joe Soverio locates the proper species on the Cetacean Comparison Chart.



Sixth graders Debra Connolly, Lisa Kraemer, and Tara Conroy try their hands at scrimshaw technique.



Mark Walton and George Nolan examine a fine example of scrimshaw from the school's special display.



An above capacity crowd of North Hicksville residents was in attendance for the first meeting of the reactivated Midland Civic Assoc. held at the Willet Avenue School. The stimulus for the rebirth of the Civic Association is the proposal before the Town Board for a White Castle high-volume drive in fast food establishment to be built adjacent to a residential neighborhood. The audience listened with rapt attention as they were addressed by their community leaders and then lined up to sign up for the Civic Association, which they believe will address this problem or any other problems that might affect them in the future.

Color Expert At Beth. Library

On Thursday, March 14, at 1 p.m., the Bethpage Public Library, 47 Powell Avenue, will present Elizabeth McCarthy (Color Consultant and Executive Director of "Beauty for all Seasons") who will describe how to get from before to after in

living color. Come and learn how the right colors, for men and women, can help one to look better and feel better. Pre-registration is required. Call 931-3907 or stop at the Reference Desk when you next visit the library.

New Students Given 'Keys' To H.S.

By Sheila Lyons

On Thursday, February 28, Dr. John McCarthy, Assistant Principal for Guidance and Scheduling, conducted a meeting for students entering the Senior High School and their parents. Dr. McCaffrey emphasized that students and their parents should become aware of the extensive program offerings available at Bethpage High School. He also took the opportunity to welcome the prospective students, and extended the welcome of Mr. George McElroy, the High School Principal, who was unable to be present.

Dr. McCarthy explained the manner of scheduling programs for students; he noted that at the end of the summer, the entering students will receive a copy of their school schedules. He asked that the school be informed immediately if any errors should appear on the schedule. He further explained that some courses require prerequisites, and for that reason, students may not be immediately eligible for a course which they may wish to

take, until the prerequisite courses are completed.

He also announced that there will be an "Orientation Program" at the end of the summer. Students are invited to come to the High School in order to learn more about the school, both academically, as well as to learn the physical lay-out of the school itself. Also, at this time, the students will be able to learn more about the extracurricular programs; i.e., Student Council, Sports Programs, and Computer Club, etc. He stressed that the High School strives to serve the "entire student", and to provide a well-rounded educational experience.

After specifically explaining many facts concerning the High School experience at Bethpage High School, Dr. McCaffrey entertained questions from those present. He added that students will receive a Bethpage High School Handbook upon starting school, and this book will provide much useful information regarding school policies, as well as rules and regulations.

A Majority of One

BY ASSEMBLYMAN LEWIS J. YEVOLI

Assemblyman Lewis J. Yevoli charged Oyster Bay officials with "gross negligence" in the wake of reports that private carters are dumping garbage from New York City at the Town's Old Bethpage Landfill. Last week the Nassau County District Attorney's office revealed that a lengthy investigation has uncovered major violations of the Town's sanitation laws involving the illegal dumping of City garbage at the Landfill. Yevoli said, "The Old Bethpage facility is the #1 rated hazardous toxic dump in New York State and is listed as one of the most polluted sites in the country." A series of tests conducted last year confirmed the existence of a contaminated plume 235 feet below the landfill that has already entered the upper level of the Magothy Aquifer, which provides 88% of Nassau County's drinking water.

"During the eight years that Joseph Colby has been Supervisor, I have repeatedly asked him to close the landfill and clean it up and so have thousands of residents and local water district officials. He has ignored us and to add insult to injury he has pushed plans to expand the landfill another 13.5 acres because he claims more room is needed for the Town's garbage. When we complained that not all of the garbage coming into the landfill was from Oyster Bay and demanded stringent controls at the site, Supervisor Colby did nothing about it," Yevoli said.

"When you realize what has been going on here," Yevoli said, "It boggles your mind. Last fall, Colby claimed there was a garbage crisis due to a lack of space at the landfill. He actually increased our taxes allegedly to cover the costs of trucking the Town's garbage to another site. To date, he hasn't shipped a dixie cup out of Town. All of the garbage is still going to the Old Bethpage landfill, but we are paying an average of \$150 more this year in taxes to cover trucking that doesn't exist. Now it turns out that much of the garbage that caused Colby's phantom crisis comes from New York City businesses that don't pay one penny in taxes to the Town. It is absolutely outrageous and it must be stopped!"

On February 28, Nassau County District Attorney, Denis Dillon, announced that a special Grand Jury would begin hearings on the revelation that several private carting companies have been illegally dumping City garbage in Nassau County, most of it at the Town's Old Bethpage Landfill. Last October, Assemblyman Yevoli charged that Colby's phony garbage crisis and his tax increase raised serious questions as to what the Supervisor and his top aides were trying to hide. "When you have private carters coming from as far away as Staten Island to dump their garbage at Old Bethpage, something is going on. What is the incentive for private carters to truck garbage that distance?" Yevoli asks. "And, even though Colby tries to convince everyone that nothing is wrong, the other members of the Town Board should question his actions. At the very least, the Town Councilmen have to be aware of the seriousness of the situation, and they should exercise some leadership. The contamination of our water and the illegal carting of garbage in the Town of Oyster Bay is not a partisan political issue. It is a very real threat to the health and safety of all of our Town residents. "One thing is certain, the smell of rotting garbage at the Old Bethpage Landfill isn't the only thing that stinks in Oyster Bay!"

Yevoli concluded, "Fortunately, the Nassau County District Attorney is investigating this mess. In the meantime, I will continue to do all in my power to have the Landfill closed, cleaned up, and to have our taxes returned to us."

Tiny Tot Storytime

The Children's Room of the Hicksville Library is again offering a special program for our youngest patrons. On Wednesdays, April 3 through April 24, at 10:30 a.m. or 11 a.m., a special 20 minute storytime for 2½ to 3½ year olds will include simple stories, finger plays, and songs.

Parents will stay with their children and help them participate in the activities. Class size will be limited to 15 children and pre-registration is required. Registration will be held in the Children's Room the week of March 18. Please bring proof of age.

Gentlemen, Chivalry Is Not Dead!

If You Would Enjoy a Home Cooked Meal Or a Talk by a Fireplace with a Group of Decent, Intelligent People, Write For Our Literature.

We Are a New Social Organization For Unmarried Adults Who Wish To Find and Form New Relationships....Gently.

821 Franklin Avenue

Garden City, New York 11530

(516) 746-2724



Hicksville Artist Manhattan Exhibit



David Dircks

"Time Changes", an exhibit of the art works of David J. Dircks, a young artist from Hicksville, will open at the 21st Street Gallery in Manhattan, on Wednesday, March 6. Open from 9 a.m. to 5 p.m., Mondays through Saturdays, it will run through March 18. The public is invited, and admission is free.

All pieces in this one-man exhibit are done in oil and deal with a change in time or a passage of time, wherein the artist is attempting to capture the gaps between moments, rather than the fleeting moments in themselves. The exhibit is curated by Andrew Gerndt of the faculty at New York's School of Visual Arts.

The centerpiece of the show is a four-sided age piece—a box depicting infancy, teenage, middle age and old age. Inside the box, seen through one of the panels, is a five-dimensional cemetery scene within a dome. Featured pieces also include a painting, which the artist calls "Inspiration", an introspective work describing his own painting experience; and "Sunburnt", a self-portrait which is a study in mood or emotion, as well as "Melancholy Man", as seen through a window.

Dircks, a senior at the School of Visual Arts, concentrates on portraiture and figure study in his work, having studied with portrait artist John Foote. He is the recipient of various awards in both competitions and juried art exhibits. One of his works was chosen "Best in Show" in a 1980 juried art show in which he was also awarded first prize for acrylics.

His latest award was for a work exhibited in the recent Rally Motors Competition. He has exhibited at Master Eagle Gallery in Manhattan, where one of his paintings was awarded an honorable mention, and is planning to have his work exhibited there again this spring. His art has also been featured in rotational art

LEGAL NOTICE

BAYSIDE ASSOCIATES--

Substance of Certificate of Limited Partnership signed and acknowledged by all of the partners and filed in the Nassau County Clerk's Office on February 19, 1985. Name and principal office in the partnership is Bayside Associates, c/o First Stratford Corporation, 410 Jericho Turnpike, Jericho, New York 11753. Its business is to purchase, own, operate, lease and sell residential real property. The term of the partnership is 60 years from the date of filing of the Certificate in the Nassau County Clerk's Office. The names and residences of the General Partners, of the Limited Partners and the cash contributions are as follows:

General Partners: First Stratford Corporation, 410 Jericho Turnpike, Jericho, New York 11753 and Richard H. Reiben, 15 Circle Road, Muttontown, New York 11791, cash contributions \$500.00 each. Limited Partner: Barbara Weiss, Whitehaven, Route 25A, Old Brookville, New York 11545, cash contribution of \$100.00.

No other property is contributed and no additional contributions are agreed to be made by the Limited Partner. The General Partners may admit additional Limited Partners totaling no more than 35 upon payment of the sum of \$35,000 per unit for a total of not more than 30 Limited Partner Units. Upon contribution for a total of 30 such Units, the Present Limited Partner shall have priority over any other Limited Partner(s) as to contributions or compensation by way of income. The remaining General Partner or Partners may continue the business upon death, retirement or insanity of a General Partner. There is no right of any Limited Partner to demand or receive property other than cash for his contribution.

JNJ 7697
6x3/1.8.15.22.29.4/5

exhibits sponsored by Chemical Bank.

A musician, as well as an artist, young Dircks says of his painting, "My art is enhanced by my love of music. I feel that art and music relate very closely through tone, mood, harmonies, relationships and composition in general."

A Meet the Artist Wine and Cheese Reception is scheduled for Wednesday, March 13, from 5-7 p.m. Further information on the artist or the exhibit is available at 516-822-3834.

LEGAL NOTICE

NOTICE is hereby given, pursuant to law, that a public hearing will be held by the Town Board of the Town of Oyster Bay, Nassau County, New York, on Tuesday, March 26, 1985, at 10 o'clock a.m., prevailing time, in the Hearing Room, Town Hall, East Building, Audrey Avenue, Oyster Bay, New York, for the purpose of considering an application for a special use permit pursuant to the Building Zone Ordinance of the Town of Oyster Bay as follows: **PROPOSED SPECIAL USE PERMIT: Petition of LESTER ROSENFELD, fee owner, and LESTER OPERATING CORP. d/b/a THE PICKWICK MOTOR INN, for special permission to permit in an "H" Industrial District the construction and operation of twenty (20) additional rooms on the westerly end of the existing motel and to erect a three story office building on the westerly portion of the premises on the following described premises: ALL that certain plot, piece or parcel of land, situate at Plainville, Town of Oyster Bay, County of Nassau and State of New York, which is described as follows: A rectangular shaped parcel of land located at the intersection of the southerly side of the South Service Road of the Long Island Expressway, Route 495, and the westerly side of Round Swamp Road, having a frontage on the South Service Road of the Long Island Expressway, Route 495, of approximately 432 feet, and a frontage on Round Swamp Road of approximately 259 feet, and known as 333 South Service Road, Plainville, New York. SAID premises being identified as Section 13, Block 89, Lot 24 on the Land and Tax Map of Nassau County. The abovementioned petition and map which accompanies it are on file and may be viewed daily (except Saturday, Sunday or Holidays) between the hours of 9 a.m. and 4:45 p.m., prevailing time, at the office of the Town Clerk at Oyster Bay, Hicksville and Massapequa. Any person interested in the subject matter of the said hearing will be given an opportunity to be heard with reference thereto at the time and place above designated. **TOWN BOARD OF TOWN OF OYSTER BAY. JOSEPH COLBY, Supervisor. ANN R. OCKER, Town Clerk. Dated: February 26, 1985, Oyster Bay, New York. MIT 1776 1x3/8****

MAY WE HAVE THE NEXT DENTS?

MADDEN'S AUTO BODY COLLISION WORK WE 1-9777 140 Woodbury Rd. Hicksville

THE OFFICE CAT

By Gabby Tabby



SORRY to hear of the death of Martin Ginsberg, former Assemblyman, a polio victim who was a person who did not allow his disabilities to interfere with his life. He will be remembered by his friends as well as his foes as a man of determination.....**WILLIAM GOUSE VFW** Post 3211 was informed by Congressman Lent that its 50th Anniversary was noted in the Congressional Record Feb. 20.....**WHILE** there may be some politicking in the complaints about the Old Bethpage Landfill dump, complaints of odors from that area are hardly political and can be savored for a long distance from the scene.....**THE CRIME REPORT** is published each week as a public service to acquaint residents of where crime is taking place in the area and as an aid in the Neighborhood Watch. Anyone seeing suspicious activity should phone 911: **BURGLARS** opened the front door of the C. Qued Labs 154 Lauman Lane, Hicksville on Feb. 18. They entered and stole \$160,000 worth of equipment.....**THE FRONT** window of Newmark and Lewis 595 S. Broadway, Hicksville was broken on Mar. 3 by burglars. They entered and stole VCR's and stereo receivers.....**BURGLARS** went to the Barcavage resident 31 Violet Ave., Hicksville on Feb. 26. They broke in through a rear window and stole cash, jewelry and a camera.....**ON FEB. 25** burglars came through the side door of the Konrab residence 9 Hawthorne St., Hicksville. They stole a VCR and a calculator.....**ON MAR. 1** burglars broke glass in the rear door of the Holtz home 17 Sylvia Lane, Plainview. They entered and stole a VCR.....**THE FRONT** door of the Epstein residence 1 Sagamore St., Plainview was pried open on Mar. 1 by burglars. They entered and stole jewelry.....**THE CELLAR** window of the Ehrlich residence 3 Sagamore St., Plainview was kicked in on Mar. 1. Cash and jewelry were stolen.....**ON MAR. 2** burglars broke the glass in a rear window of the Bloom residence 58 Sylvia Lane, Plainview. They entered and stole jewelry.....**GLASS** was broken in a rear window of the Miller residence 6 Hillvale Rd., Syosset between Feb. 27 and Mr. 2. A VCR, cash and watches were stolen.....**AT 12** Hillvale Rd., Syosset between Mar. 2 and 3 glass was broken in a rear window. But the loss is unknown.....**A VCR** and jewelry were stolen from the Philibert home 66 Phipps Lane, Plainview on Mar. 2. Entry was through a rear window.....**VCR'S**, typewriters and tools were stolen from Sears 42 Andrews Rd., Hicksville between Feb. 26 and 27.....**AND BURGLARS** broke glass in a rear window of the Center Service Station 30 Underhill Blvd., Syosset between Feb. 26 and 27. The loss is unknown.....That's all the news for now.....G.T.

LEGAL NOTICE

January 31, 1985

Notice is hereby given that the persons herein named have formed a limited partnership for the transaction of business in the Town of Jericho, State of New York, and have filed a certificate in the Clerk's Office of Nassau County the substance of which follows.

The name of the limited partnership is FLI Energy Two Associates. The character of the business is investment in oil and gas exploration. The principal place of business is One Jericho Plaza, Jericho, County of Nassau, State of New York.

First Long Island Investors, Inc., located at 1 Jericho Plaza, Jericho, New York, is the general partner. The limited partners are as follows: Norman Basner, Woodmere, New York; Thomas Carvel, Yonkers, New York; Kaltsas Oil Company - Englewood Cliffs, New Jersey; William Entenmann, Islip, New York; First Long Island Investors, Inc., Jericho, New York; Patte B. Roberts, Belle Harbor, New York; Stephen G. Siben, East Islip, New York; Denise Tompkins, East Islip, New York.

The partnership will cease to exist on December 31, 2024. The amount of cash contributed by all of the partners amounted to \$1,100,000.00. The net profits and losses of the partnership shall be allocated among the partners in proportion to their respective percentage interests in the partnership.

JNJ 7695
6x2/15; 22; 3/1, 8, 15, 22

LEGAL NOTICE

January 31, 1985

Notice is hereby given that the persons herein named have formed a limited partnership for the transaction of business in the Town of Jericho, State of New York, and have filed a certificate in the Clerk's Office of Nassau County the substance of which follows.

The name of the limited partnership is FLI Energy Two Associates. The character of the business is investment in oil and gas exploration. The principal place of business is One Jericho Plaza, Jericho, County of Nassau, State of New York.

First Long Island Investors, Inc., located at 1 Jericho Plaza, New York, is the general partner. The limited partners are as follows: Norman Basner - Woodmere, New York; Thomas Carvel - Yonkers, New York; Kaltsas Oil Company - Englewood Cliffs, New Jersey; William Entenmann - Islip, New York; First Long Island Investors, Inc. - Jericho, New York; Patte B. Roberts - Belle Harbor, New York; Stephen G. Siben - East Islip, New York; Denise Tompkins - East Islip, New York.

The partnership will cease to exist on December 31, 2024. The amount of cash contributed by all of the partners amounted to \$1,100,000.00. The net profits and losses of the partnership shall be allocated among the partners in proportion to their respective percentage interests in the partnership.

JNJ 7695
6 x 2/11; 3/1, 8, 15, 22, 29

K. Of C. Sponsors Luau Event

The Columbiettes of the Rev. Michael J. Harrigan Council are sponsoring a LUAU on Saturday, March 30. It will be held at the Knights of Columbus Hall, 517 Central Ave., Bethpage. Unlimited Drinks-Dancing-D.J.-Entertainment. Tickets are \$15. For reservations call 935-3529 or 935-7954.

PUBLIC NOTICE

NOTICE is hereby given, pursuant to law, that a public hearing will be held by the Town Board of the Town of Oyster Bay, Nassau County, New York, on Tuesday, March 26, 1985, at 10 o'clock a.m., prevailing time, and thereafter be adjourned until 8:00 p.m., prevailing time of the same day, in the Hearing Room, Town Hall, East Building, Audrey Avenue, Oyster Bay, New York, for the purpose of considering an application for a special use permit pursuant to the Building Zone Ordinance of the Town of Oyster Bay as follows: **PROPOSED SPECIAL USE PERMIT**, Petition of **BICMAC EQUITIES CORPORATION** and **WHITE CASTLE SYSTEM, INC.**, for special permission to erect, use and maintain in a "G" Business District (General Business) pursuant to Section 485 paragraph 1 and 1.1 of the Building Zone Ordinance of the Town of Oyster Bay, a **WHITE CASTLE FAST FOOD RESTAURANT** with a drive-in service window, on the following premises: **ALL** that certain plot, piece or parcel of land, situate at Hicksville, Town of Oyster Bay, County of Nassau, State of New York, located at the intersection of the east side of Bethpage Road, and the northerly side of Willet Avenue, having frontage of approximately 227 feet on Bethpage Road and approximately 98 feet on Willet Avenue, an easterly boundary of approximately 237 feet, and a northerly boundary of approximately 193 feet, said premises also being designated on the Land and Tax Map of Nassau County as part of Lot 20, in Block 360 of Section 12. The abovementioned petition and map which accompanies it are on file and may be viewed daily (except Saturday, Sunday or Holidays) between the hours of 9 a.m. and 4:45 p.m., prevailing time, at the office of the Town Clerk at Oyster Bay, Hicksville and Massapequa. Any person interested in the subject matter of the said hearing will be given an opportunity to be heard with reference thereto at the time and place above designated. **TOWN BOARD OF THE TOWN OF OYSTER BAY. JOSEPH COLBY, Supervisor. ANN R. OCKER, Town Clerk. Dated: February 26, 1985, Oyster Bay, New York.**

MIT 1775
1x3/8



Oyster Bay Town Clerk Ann R. Ocker, left, presents a citation to Margaret Smith at a party celebrating her 100th birthday. Mrs. Smith was feted by fellow residents of Central Island Nursing Home and also received personal greetings from Ronni Rosenberg, administrator of C.I.N.H. A native of Brooklyn, Mrs. Smith was a member of the famed Ziegfeld Follies.

LEGAL NOTICE

LEGAL NOTICE
FOX FIRE ASSOCIATES— Substance of Certificate of Limited Partnership signed and acknowledged by all of the partners and filed in the Nassau County Clerk's Office on February 19, 1985. Name and principal office in the partnership is Fox Fire Associates, c/o First Stratford Corporation, 410 Jericho Turnpike, Jericho, New York 11753. Its business is to purchase, own, operate, lease and sell residential real property. The term of the partnership is 60 years from the date of the filing of the Certificate in the Nassau County Clerk's Office. The names and residences of the General Partners, of the Limited Partners and the cash contributions are as follows:
General Partners: First Stratford Corporation, 410 Jericho Turnpike, Jericho, New York 11753 and Richard H. Reiben, 15 Circle Road, Muttontown, New York 11791, cash contributions \$500.00 each. Limited Partner:

Barbara Weiss, Whitehaven, Route 25A, Old Brookville, New York 11545, cash contribution of \$100.00.

No other property is contributed and no additional contributions are agreed to be made by the Limited Partner. The General Partner may admit additional Limited Partners totaling no more than 35, upon payment of the sum of \$35,000 per unit for a total of not more than 30 Limited Partner Units. Upon contribution for a total of 30 such Units, the present Limited Partner shall have priority over any other Limited Partner(s) as to contributions or compensation by way of income. The remaining General Partner or Partners may continue the business upon death, retirement, or insanity of a General Partner. There is no right of any Limited Partner to demand or receive property other than cash for his contribution.

JNJ 7696
6x3/1, 8, 15, 22, 29, 4/5



INSURANCE

Homeowner's
Commercial Lines
Automobile
Umbrella Policies

Call Rick Stanco for a
FREE Comparison & Evaluation
of your Present Policies



921-4040

COACH BROKERAGE INC.
INSURANCE

Garden Club Fashion Show

The Plainview-Hicksville Garden Club is having a Dinner and Fashion Show on Thursday evening, March 21, at 7 p.m. at Manor Est. 201 Jerusalem Avenue, Massapequa. Tickets are \$20. For tickets or further information call 938-6829.

Cutrone-Grosso Engagement

Mr. and Mrs. Xavier Cutrone of Hicksville are pleased to announce the engagement of their daughter Barbara to Joseph Grosso, son of Mr. and Mrs. Frank Grosso of Bethpage.

Barbara is a graduate of Hicksville High School, Class of 1976. Joseph is a graduate of Bethpage High School, Class of 1974. They plan to settle in Bethpage.

Science Fair At St. Ignatius

Mr. Goffredi's 7th and 8th grade students participated in the annual Science Fair at St. Ignatius Loyola School on Friday, March 1. Exhibits ranged from the Atom Bomb to TV and How it Works. Judging was by Mrs. McManus, Mrs. McKay and Mrs. Pistorino. Congratulations to the winners:

1st Prize: John Kabacinski-How A Plane Flies; 2nd Prize: Carmen Molinos, Barbara McMelville, Susan Manson-Through A Fishes Body; 3rd Prize: Elizabeth Saronka, Christine McEntee-The Heart How it Works. Thanks to all who participated

LONG ISLAND S-P-E-L-L-I-N-G BEE

at Sunrise Mall sponsored by
Sunrise Mall and Encyclopaedia Britannica

The categories are as follows:

1st & 2nd Grades - 1 PM on March 23
3rd & 4th Grades - 3 PM on March 23
5th & 6th Grades - 2 PM on March 24

1st Prize is a 3-volume Merriam-Webster Dictionary provided by Britannica to the winner in each category. Gem Electronics will provide a Sharp EL 326 solar-powered calculator to all second prize winners. Register through your elementary school or up to one hour before the spelling bee begins on the Lower Level near Macy's.



Sunrise Mall

Open Mon thru Sat 10AM-9:30 PM
 Sunday 10-6PM

A MUSS TANWOODS CORPORATION DEVELOPMENT
 Sunrise Highway & Cormans Rd. Massapequa
 Over 170 stores including

Macy's, Stern's,
 J.C. Penney, A&S,
 Woolworth



1st Prize Winner - John Kabacinski



2nd Prize Winners - Left - Carman Molinos; Center - Susan Manson; Right - Barbara McMelville.




3rd Prize - Left Elizabeth Saronka; Right - Christine McEntee

Hastings

TILE & BATH OUTLET

50% Discount and More

- European Ceramic Tile
- Tubs
- Italian Bath Fixtures
- Faucets
- Accessories



CLOSEOUTS: Materials sold in outlet are not available in Hastings Great Neck or New York showrooms.

STORE HOURS: 9:30AM to 5:30PM
 Tuesday-Saturday

DIRECTIONS: Meadowbrook Pkwy (S) to exit M8. Sunrise Hwy. (W) to Henry St. Right to Broadway, right to 32 Commercial St.

516-379-3424

Emporio

HASTINGS OUTLET

32 Commercial St., Freeport, N.Y.

Names Omitted From Honor Roll

Hicksville High School has informed this newspaper that the following names were inadvertently omitted from the Honor Roll List.

- Principal's List-90 and above**
 Kathleen Davidowsky, 12th grade; Jean Marie Bollhofer, 10th grade; Lisa Lancr. 10th grade; James Munson, 10th grade; Scott O'Callahan, 10th grade.
- Honor Roll-85-89**
 Lisa Boord, 10th grade; and Colleen Donahue, 12th grade.

Woman Attacked In Hicksville

At approximately 2:30 a.m., Feb. 28, a 24 year old female, reported to Detective Vincent Distefano of the Second Squad that at 1:15 a.m. this morning she had been attacked.

The victim had been walking on West John Street, near Broadway Hicksville when she was accosted by a male white, wearing a knife in a sheath on his right side. The suspect was described as male, white, mid 20's, wearing a dark wool ski cap; black jacket, brown pants and navy blue sneakers. The female was taken to a local hospital, treated and released.

Last Call For Open Registration

Last Call For Open Registration-On Saturday, March 9, from 10 a.m.-12 p.m. the Hicksville Baseball Association will hold open registration for boys and girls ages 6-18 wishing to play baseball/softball. Anyone signing up after this date will be charged a late fee of \$10. Opening Day is not far off-April 13.

LEGAL NOTICE PUBLIC NOTICE

PLEASE TAKE NOTICE that pursuant to law, a public hearing will be held in the Hearing Room, Town Hall, East Building, Audrey Avenue, Oyster Bay, New York, on the 26th Day of March, 1985, at 10:00 o'clock a.m., prevailing time, or as soon thereafter as practicable, to consider amending Articles IV and V of the Building Code of the Code of Ordinances of the Town of Oyster Bay, by deleting the word "superintendent" wherever appearing in Articles IV and V and adding in place thereof the phrase "commissioner of the department of planning and development or his designee"; and to consider amending Section 7-5 of the Electrical Code of the Code of Ordinances of the Town of Oyster Bay by deleting the phrase "superintendent of the division of building" wherever appearing in Section 7-5 and adding in place thereof the phrase "commissioner of the department of planning and development or his designee"; and amending Section 7-27 of the said Electrical Code by deleting the phrase "the Director of the Building Department" wherever appearing in Section 7-27 and adding in place thereof the phrase "commissioner of the department of planning and development or his designee"; and to consider amending Articles II, III, IV, V, VI, VII, IX, X, XI of Sub-Part 38, Places of Assembly (Local Laws) of the Code of Ordinances of the Town of Oyster Bay, by deleting the word "superintendent" wherever appearing in Articles II, III, IV, V, VI, VII, IX, X, XI and adding in place thereof the phrase "commissioner of the department of planning and development or his designee". The new provisions are intended to comply with the Town Board's previous decision of designating the Commissioner of the Department of Planning and Development as the statutory building inspector and leading law enforcement officer of the construction and occupancy codes of the Town of Oyster Bay. All persons interested shall have an opportunity to be heard upon said proposed amendments at the time and place aforesaid. The Ordinances and proposed amendments are on file in the Office of the Town Clerk and may be examined during regular business hours by any and all interested persons.

TOWN BOARD OF TOWN OF OYSTER BAY. JOSEPH COLBY, Supervisor. ANN R. OCKER, TOWN CLERK.
Dated: February 26, 1985
Oyster Bay, N.Y.
MIT 1773
1x3/8

Hospital Awarded Transfusion Accreditation

The Central General Hospital Transfusion Service has been awarded accreditation by the American Association of Blood Banks (AABB), according to Robert Bornstein, Administrator of the 300 bed health care facility.

Accreditation follows an intensive on-site inspection by specially trained representatives of the Association and establishes that the level of medical, technical and administrative performance within the facility meets or exceeds the rigorous standards set by the AABB. By successfully meeting those requirements, Central General's Transfusion Service joins more than 2,200 similar facilities across the United States and abroad

that have earned the Accreditation rating and recognition.

Bornstein explained: "The AABB's inspection and accreditation procedures are voluntary. It is not legally necessary for a blood bank or transfusion service to be accredited, but like many others, our facility has sought accreditation because it represents a level of professional and medical expertise that meets and exceeds government regulations. The primary goal of the program is to assist facilities like ours to achieve excellence, and thus provide higher quality, blood, blood components and other services to patients."

The "Standards for Blood Banks and Transfusion Services"

are written by a distinguished panel of experts in the field, composing the AABB Committee on Standards. The AABB National Committee on Inspection and Accreditation assures compliance before granting accreditation. Not only do these standards set the level of professional proficiency for blood banks and transfusion services in the United States, but they provide the basis of practice for similar facilities around the world.

Half the price of a postage stamp. That is all this newspaper cost you per week delivered to you by mail.

Transportation Requests Now

All requests for transportation of nonhandicapped students attending private and parochial schools outside the school district within the 15 mile limits must be made in writing by April 1 for the 1985-86 school year. Application forms are available from the Transportation Office in the Administration Building on Division Avenue. If you need further information, please call the Transportation Office at 933-6518.

Two reasons it's easier to do business in Nassau County.



They're Francis Purcell and Joseph Colby—two reasons the Town of Oyster Bay is good for business.

Francis Purcell, County Executive, and Joseph Colby, Supervisor, working with the Nassau County Industrial Development Agency,

have scored some impressive gains for Oyster Bay in the past 5 years, gains that have come about for one simple reason: they make it easy to do business in Nassau County.

By any yardstick, it's a terrific story. In commercial, industrial and retail space, IDA added 1,273,945 sq. ft. in Oyster Bay in 5 years. In dollar value, IDA projects topped \$73 million. We also retained a total of 24,530 jobs, and added 1,363 new ones—jobs that would never have come to Oyster Bay without a lot of hard work from IDA. These jobs translate into \$219.9 million in retained payroll dollars, \$34.8 million in new payroll. It also means \$1,910,917 less in property taxes paid by the citizens of Oyster Bay.

It's a good story, and IDA is going to make it an even better one in the coming years. After all, when it comes to business for Oyster Bay, there's no business like good business. And what's good for business is good for you, for us and everyone in Oyster Bay.

NASSAU COUNTY.
IT'S GOOD FOR BUSINESS.
Nassau County Industrial Development Agency

Francis T. Purcell, County Executive
Roy N. Cacciatore, Commissioner, Dept. of Commerce & Industry
Ute Wolff Lally, Chairperson, Industrial Development Agency
Stephen G. Latham, Executive Director,
Industrial Development Agency
1550 Franklin Ave. • Mineola, Nassau County, Long Island
New York 11501 • 516 535-4160



LOCAL READER

CLASSIFIED ADS sure to get results

There Is Nothing Else Like Local Classified Ads From Neighbor to Neighbor

DEADLINE
TUESDAY
12 NOON

ONE AD APPEARS IN 8 LOCAL NEWSPAPERS FOR ONLY \$9.00

- Garden City News • Call 294-8900
- Mid Island Times • Bethpage Newsgram
- Syosset Advance • Jericho News Journal
- Call 931-0012
- Williston Times • Mineola Edition
- New Hyde Park Herald Courier
- Call 746-0240

NOW after 2 p.m. phone in your ad 24 hours a day to our special after hours ad number. You can phone your ad 24 hours a day and it will appear in the next issue of the paper (up to the 12 noon deadline for week of publication). If you miss the hours of our regular ad takers at any of the above number call 746-0240 and give your ad 24 HOURS A DAY.

Help Wanted

REAL ESTATE SALES PERSON for Hicksville, Bethpage, Levittown, Plainview areas. Hours to suit. Confidential interview. Ask for Irene. 516-935-5959 WM2

ELECTRICIAN EXPERIENCE essential. Top wages and company paid benefits. Kenny Electric, Mineola. Call 746-7617. htfnm2

SECRETARIES ONE excellent stenographic & typing skills. Three dictaphone typists, word processors. Pleasant surroundings. Mineola Law firm. 741-7707. gcm2

ADVERTISING SALES PART time. Permanent position in good location selling for newspaper publications. Some experience helpful but willingness to work important. Salary and commissions. Approx. 20 hours per week. Call Mrs. Pakaluk 931-0012 htfnm2

RETIRED PERSON WITH Own transportation wanted to run occasional errands for small business in Garden City. \$5/hr + 50¢ per mile. Call Mrs. Owen. 746-2724. gcm2

PERMANENT PART TIME person needed three days a week late afternoons and early evenings. Mon., Tues., Wed. to do proofreading, paste up and layout for newspaper plant in Hicksville. Interesting work for right individual. Will train. Call Mrs. Pakaluk 931-0012. htfnm2

DRIVERS-TAXI-DAYS/NIGHT Shift. Security and hack license. Medallion available. 354-2040 & 432-6556 day or eves. gcm2

CLAIRVOYANT AND PSYCHIC Readers wanted. Must be exceptional in their field. Call Frank at 822-6783. hm2

TELEPHONE WORK PART Time or flexible hours, evening work available also. Returnees welcome, salary plus commissions, paid holidays and vacation. Garden City vicinity. Call Eleanor 741-8048. hm3

Help Wanted

INCOME OPPORTUNITY Can you use an extra few hundred dollars a week without changing present job or schedule? Or put in more time and make as much money as desired! Set own goals, we train. No experience necessary. \$500 Million a year health-nutrition company. New herbal way of life. Betty Basile 496-4865. hm2

STUDENT OR WOMAN needed to care for 2 children in Garden City, ages 9 and 12, from 3 to 6 p.m., Mon., through Fri. and to prepare dinner. Call 385-5583 days; or 326-1671 eves gcm5

FOR GREENHOUSE SALES Knowledge helpful, or will train. Full time/part time. Keil Bros. of Nassau-621-6328 WM3

GARDEN CENTER, NURSERY Sales, Stock, part time/full time. Keil Bros. of Nassau-621-6328 WM3

RESPONSIBLE SITTER Needed for 5 year old son in our Mitchell Field home, 2 or 3 days per week with flexible hours. Salary negotiable. Serious applicants only. Interview 575-3438 or 222-0857. gcm2

DISC JOCKEY BEGINNER With reasonable rates preferred to work on regular basis for social club dances. Call Mrs. Owen 746-2724. gcm3

DRIVER SCHOOL BUS CLASS 2 license or will train. Start \$6.30 per hour. 30 hours guaranteed. Blue Cross plus benefits K & S Transportation Corp. 921-2381 hm5

LOVE CHILDREN? APPLY for rewarding part time position as lunch aide. Syosset Schools 921-5500 Ext. 219. hm3

SCHOOL VAN DRIVERS P/T. AM or PM routes available. Guaranteed hours, excellent as 2nd income, will train. Pt. Washington Call 883-6711. hm2

Help Wanted

CHILD CARE NEEDED 2 DAYS per week. 2 children ages 18 months and 6 years. Manhasset Hills area, non smoker, own transportation, references required. 328-7129. wm4

FULL TIME LIVE-IN HELP Widowed W. Hempstead woman recovering from stroke requires help to cook, clean, shop & run household. Second floor (private) 2 rooms with bath and use of car for the right person. Flexible hours. Lots of family help. References required. 746-6867 after 3 p.m. gcm3

REAL ESTATE AGENTS FULL time. High commission plus bonuses. 741-4640. wm2

P/T OFFICE ASSISTANT needed Monday, Wednesday, Friday, 5 plus hours each day. Hours flexible. Good typing skills and telephone personality, general office work, pleasant Albertson location. Call Ellen Basile, 621-7568 weekdays between 9 a.m. and 4:30 p.m. wm2

PART TIME BOOKKEEPER in the village of Garden City. Experience necessary. Flexible hours. Call 742-5030. gcm2

MOTHER'S HELPER NEEDED to care for 3 year old child, Monday and Friday afternoons. Good for Jr. High School student. Own transportation helpful. East Williston area. Call 248-3756 wm4

SECRETARY GROWING Garden City insurance agency seeks bright hardworking typist with steno. Excellent benefits. Call Rich Nocella 294-0200. gcm4

EXPERIENCED PLUMBER Wanted. Immediate opening. Good salary. Call 437-6330 gcm2

HAIRCUTTERS WANTED With or without following; male or female. Manicurist, make-up artist. Prestigious new shop in Garden City area. Call 431-2582 or 889-2580. gcm2

MATURE PERSON TEACHING Mother needs child care for 2 school age children. Mon.-Fri. My house in Syosset. Transportation needed. Begin immediately 921-0472 even. hm4

RELIABLE MATURE PERSON wanted for bakery. 5 days 6-12 or 12-7. Apply in person, Lady Cake Shop, 336 Jericho Turnpike, Syosset, mornings. 921-5888 hm2

OFFICE SECRETARY Full time. Typing and phone work. Congenial office in Garden City. Call Winnie between 9 and 5 p.m. 747-1011. hm2

EARLY A.M. NEWSPAPER Delivery. Floral Park area. Must have car. Must be reliable. Good pay. 354-3474. gcm4

Help Wanted

BABYSITTER/HOUSEKEEPER Warm loving, non smoker, to care for 2 children 6 and 4. Live in Monday-Friday. Will sponsor. Recent references required. 747-7468 after 7:30 p.m. WM4

REGISTERED NURSES Herricks Public Schools. R.N.'s needed to substitute in Herricks Public Schools. Salary: one to 20 days \$48 per day, 21 days and beyond \$55 per day. Please send letter of application and resume as soon as possible to: Dr. Leon R. Pierce, Assistant Superintendent for Instruction, Herricks Public Schools, Shelter Rock Road, New Hyde Park, N.Y. 11040 (An Affirmative Action Employer) Wm2

DANCE INSTRUCTORS Male and female wanted by social club to teach ballroom, modern, folk and square dances. Call Mrs. Owen. 746-2724. gcm2

NEWSPAPER TELEPHONE Sales positions available in Mineola. Comfortable and friendly office surroundings. Individuals with good speaking voice and light typing skills are eligible for on job training for a rewarding position. Wardrobe unimportant. Public transportation nearby. Salary and commission. Two shifts open, Monday to Friday, 9 a.m.-5 p.m. or eves. Mon. to Fri. hours optional, Sat. also available. For interview call 747-8282, ext. 123. gcm2

SUBSTITUTE LUNCH Monitors needed at elementary schools from 1 to 1 1/2 hours between the hours of 11 and 1:15 p.m. weekdays. \$5.50 per hour. Call 294-3010 for applications. hm2

Situation Wanted

LADY AVAILABLE TO DO SEW- ing, hemming only. Call 354-6740 after 7 p.m. and ask for Ivone. gcm5

HOUSECLEANING POSITIONS Wanted. Mon. to Fri. Reference. Own transportation. Call 489-6223. gcm5

HOUSECLEANER AVAILABLE Sat. & Sun. Experienced and reliable. Call 354-6740 after 7 p.m. and ask for Ivone. gcm5

HOUSECLEANING DAYS excellent references. Call 292-3561. gcm5

HOUSECLEANING AVAILABLE \$35. Monday to Friday. References and own transportation. 538-6128. gcm5

LADY AVAILABLE TO TAKE care of elderly, convalescent or children. Can do housekeeping and cooking. Nursing home experience. References. 481-7141 ask for Maria. gcm5

Situation Wanted

HOUSECLEANER AVAILABLE Experienced, reliable, trustworthy and efficient. Call after 6 p.m. 292-3107. hm4

EXPERIENCED WOMAN seeks housecleaning. Mon.-Sat., 9-2 or 8-1. Good references. Call 489-0839 after 3 p.m. gcm2

MATURE WOMAN AVAILABLE for housecleaning. Experienced, references. Daytime call 485-1420. gcm5

HOUSECLEANING POSITION wanted Monday to Friday. References and own transportation. Call 489-9252. gcm2

HOUSECLEANING POSITION Wanted. Monday to Friday. References and own transportation. Call after 3 p.m. 481-0902. gcm2

OVERWHELMED BY HOUSE- work? Need help, but feel you can't afford it. Perhaps I can help. I am thorough, efficient, trustworthy and reliable. I have excellent references and my own transportation. For details, call and speak to me about my special plan created just for you. Call: 718-525-1217. gcm2

MATURE WOMAN WILL Babysit evenings and/or weekends and will do sleeper weekends. Please call after 8 p.m. 741-8149. gcm5

PRACTICAL NURSE Private patients or elderly. Excellent recommendations; full or part time. Call eves. 546-3842. gcm5

WOMAN LOOKING FOR Housekeeping work. Live in or days. Speaks Spanish and English. Reference. Call Carol, 201-433-8549. gcm5

HOUSEKEEPING WORK Wanted. Part time; Mon. to Fri. Reference. Call 483-0275. gcm5

BABYSITTER AVAILABLE Will take child in my home. Excellent references. 481-4450. gcm5

NURSE LPN ENGLISH TRAINED Garden City resident. Available for home care. 323-8839. gcm5

NURSES AIDE AVAILABLE For live out to care for sick or elderly. 12 years Hospital Experience. Checkable references. Call after 5 p.m. 538-3911. gcm5

HOUSECLEANING AVAILABLE Monday, Thursday, Friday and Saturday, 9-2 p.m. References, own transportation. 486-3874 after 5 p.m. gcm4

REGISTERED NURSE B.S.N. Short and long term care available. Flexible hours. Consultations. West Nassau area only. 483-7150 or 481-9232. gcm4

Situations Wanted

GRADUATE STUDENT looking for weekend work. Painting, cleaning, etc. Reliable. Former Garden City area resident. 718-939-4373. gcm2

WOMAN EXPERIENCED desires position as chambermaid, parlormaid or light housekeeping. Best references. Call 718-388-2245. gcm2

CHILD CARE AVAILABLE in my Williston Park home Monday through Friday. 747-7197. gcm4

EAST MEADOW MOM WILL babysit in my home for infants or toddlers. Full time or part time, 5 days. Call 794-2243. wm2

I WILL THOROUGHLY CLEAN your home. "I am the best". Ten years in the business. Excellent references. No ironing. Choose own hours. Please call and leave message. You will be glad you did! For a job well done \$40. 489-5941. gcm3

LADY AVAILABLE TO DO ironing. Experience and reference. Call 481-7141 ask for Maria. gcm3

MATURE LADY LOOKING for housecleaning job. Wed. or Fri., mornings. References. 481-6556 evenings. gcm3

NURSE GARDEN CITY resident, 35 y.o., seeks part time work in physician's office. Experienced. Please call 742-3972. gcm3

CLEANING WOMAN AVAILABLE. European background. Experienced. References. Call after 5 p.m. 483-3010. gcm3

GRAD STUDENT LOOKING to help pay her way by housecleaning. Ambitious, responsible and thorough. Experienced, references, and own transportation. Call Kim after 6 p.m. 673-0117. gcm3

NURSE'S AIDE OR Companion 10 a.m.-5 or 6 p.m. or 9-5 p.m. 481-3888. gcm3

EXPERIENCED NURSE'S AIDE with references to take care of elderly or sick night or day. Call Jean 486-7013 after 6 p.m. gcm2

HOUSECLEANING ANY DAY 9-2, references, own transportation. 997-8238. gcm2

WOMAN WISHES TO CLEAN house. Wed. and Fri. Good references. 489-2666. gcm2

BOOKKEEPER PER DAY All phases+taxes and personal accounts. Experienced. Garden City area. Call 747-2995. gcm4

DAY WORK HOUSEKEEPER Available. Experienced and references. Call 486-8087 anytime. gcm4

HOUSE CLEANER Available. Monday through Saturday. Own transportation. Call 481-8171. gcm4

RELIABLE HOUSEKEEPER looking for day work. 9 a.m. to 3 p.m. or 8 a.m. to 2 p.m., Monday through Friday. Own transportation. Call 671-5749 anytime. wm5

Situations Wanted

CHILD CARE AVAILABLE in my Albertson home. Loving mother, former nursery school teacher. Part time or full time. Reasonable rates. 747-1507. wm2

NURSE'S AIDE SEEKS position. Adult woman willing to care for sick or elderly. Nursing home experience. 718-468-4175. gcm2

Cars For Sale

CONVERTIBLE 1975 Oldsmobile Royale. Excellent condition. Must see \$5000; also, Vaa 1978 Dodge Tradesmen 200. Excellent condition \$3500. Call 488-6168 between 6 and 9 p.m. wm5

MANHATTAN BOUND-MUST Sell 1983 Datsun Sentra. Excellent condition, red, 5 speed, 30,000 miles, am/fm Clarion stereo. Original owner. Call Kathleen or leave message. 746-2639. WM3

FORD FAIRMOUNT '80 Low mileage (28,000); two door; 4 cylinder; a/c; standard drive; excellent condition. \$2800. 248-8371. gcm5

MAZDA RX 7-1982 MINT Charcoal grey, 25,000 miles. AC, 5 speed, alarm, AM/PM cassette stereo. Power antenna, pin stripes, moon roof, back louvers, \$10,000. Must see. 352-9031 gcm2

1981 Z-28 CAMARO Black and red; automatic; low mileage; stereo; TpTop, garaged. Asking \$8500. 718-745-3070 gcm2

1967 RED CADDY Convertible. All original white leather interior and white top. Absolutely mint. Must be seen. Best offer over \$15,000. 742-3382. gcm3

1979 CHEVY MALIBU WAGON White/blue, auto, PS, PB, AM/FM, roof rack, V6, only 49,000 highway miles. Excellent. Asking \$3100. Call after 5 p.m. 747-3889. gcm3

1982 DATSUN 310 4 door hatchback, am/fm radio, AC, front wheel drive, PS, 23,000 miles. \$5600. 354-3313. gcm4

1982 DODGE 400 convertible. AM/FM stereo, cruise control, AC, low mileage, excellent condition. \$7500. 741-5368. gcm3

'72 CHEVY NOVA 4 DOOR PS, PB, AC, am/fm radio, SBR/WV, auto, good condition. \$750 248-7132. gcm4

MERCEDES '82 300D-TURBO Black with palamino; sun roof; 38,000 miles. Excellent condition; body perfect. Asking \$18,990. Call 352-0867. gcm4

1975 PLYMOUTH FURY 2 door, sedan, excellent condition. New tires. Pristine white exterior. \$1800. Call 746-5639hm3

1978 PLYMOUTH HORIZON 4 Dr. auto transmission, low mileage, conditioning, am/fm radio, rear defroster, new starter and battery. Good M.P.G. and good condition. \$1900 negotiable. Call 248-4530. hm4

Cars For Sale

1973 V8 CORONET STATION wagon. 3 seat, a/c, roof rack. Original owner. Please call 746-5293. wm5

1979 COUGAR XR7 RED WITH white top, fully loaded, low mileage, \$2600. 921-7268. wm5

1983 FORD ECONOMY 150 VAN Black, 6 cyl., auto, P/S, P/B. 55,000 miles, good condition, setup for towing. Going overseas, quick sale. \$3700. 742-9247. wm5

1980 CAMARO BERLINETTA T-roof, stereo cassette, low mileage, excellent condition \$6000. Call 568-1007. hm5

1979 MONTE CARLO 2 door Royal blue, 6 cyl, with AC, PW, PS, PB, Looks and runs great. Cared for and sensibly driven. \$3500. 741-2127. gcm5

RENAULT '83 181 SEDAN 14K miles; 4 cylinder; fully equipped; auto; mint. \$6000. 747-5234 after 8 p.m. gcm5

1972 VW GHIA-RED Snows; stereo; \$1000. Call 747-6931. gcm5

'79 BUICK REGAL 2 DOOR V-6; p/s; p/b; a/c; 66,000 miles. Excellent; garaged. \$3900. 742-2255. gcm5

1983 TOYOTA COROLLA Lift back; SR-5; 5 speed; am/fm; pin stripe; Chapman lock; 24K miles; excellent condition. \$6600. 328-2161. gcm5

Real Estate Wanted

GARDEN CITY FAMILY looking for a house in center of Garden City for June 1, 1985. Price \$200's. Eastern Section house for sale. Principals only. Write Box "S", Garden City News, 821 Franklin Ave., Garden City, N.Y. 11530. gcm2

MATURE PROFESSIONAL couple wish 3/4 bedroom home in Garden City or East Williston. EIK, room for den on main level. Priced \$200's. Summer occupancy. Please write Box D, Garden City News, 821 Franklin Ave., Garden City, NY 11530. gcm4

BUILDING PLOT WANTED Garden City preferred. Private - not a builder. To build own home. 333-7127. gcm4

COMMERCIAL PROPERTY IN western Suffolk, 2 or 3 acres zoned for light industry wanted to rent or buy near LIE. Call Mr. Owen 481-6290. gcm4

FORMER GARDEN CITY Resident wishes to purchase Colonial in Garden City. Minimum 3 Bedrooms. Write Box M, Garden City News, 821 Franklin Ave., Garden City, NY 11530. gcm3

COUPLE WISHES TO BUY House in Garden City. 3-4 bedrooms. Price \$200's. Principals only. 829-9474. gcm3

WANTED FOR SEMI-RETIRED couple, building lot on byside of North Fork on Long Island. Walking distance to water. Call after 5:30 p.m. 747-5393. principals only. wm2

Real Estate Wanted

YOUNG COUPLE SEEKING Home in Garden City; 2 car garage preferred; Low \$200's. Call 294-5555 (business) or after 3:30, 496-8837. gcm4

WANTED-PRIVATE ROOM And Bath or suite. Cheerful and graciously appointed in comfortable, quiet and private surroundings. Mature, non smoking former Garden City woman requires intervals of two to three month at varied times throughout the year beginning mid April. Impeccable banking & personal references. Garden City, Locust Valley, Old Westbury or similar. Call 489-0199. please keep trying. gcm4

COUPLE WISHES TO Purchase home in Estates or Mott Section. Please write Box P, Garden City News, 821 Franklin Ave. Garden City, N.Y. 11530. gcm4

PRIVATE HOME OWNER Looking for building lot in Albertson/Garden City Park/New Hyde Park/Herricks/Williston Park or East Williston. Will pay premium price. 516-741-2365. Call after 6 p.m. WM4

RETIRED WOMAN WISHES TO buy house in Garden City for \$100,000. Call evenings after 6 p.m. 718 441-6473. gcm2

!!! NEEDED !!! Bed & Breakfast - unfurnished room/studio, near transportation, private entrance and private bath. Fridge and hotplate will do nicely. Willing to decorate. Reasonable. Call New Hyde Park (Oaks) 488-2925. Weekends are best to reach tenant on the go. hm2

GARDEN CITY HOME OWNER seeks larger home, Colonial or Tudor (3-5 BRs, 2-4 baths) in Estates or Central sections. Minimum property 80x100. Will pay all cash. Close now, move at your convenience. Principals only 486-1534. gcm5

OLDER GARDEN CITY COUPLE with two well behaved dogs desire one week escape to cottage or condo, on or near water, ocean or L.I. Sound. Week of May 18 to 25. Call 741-4172 after 6 p.m. gcm5

APARTMENT WANTED BY female in Garden City, Hicksville, Mineola, Levittown, Westbury, Carle Place or E. Meadow. Three rooms or studio with lease. Full kitchen. Quiet, non-smoker. Call MA 3-1494. hm5

Vacation Rental

EAST MARION LARGE bayfront house with spectacular views of Orient Point and Shelter Island. Private beach, fully equipped, near golf and tennis. May 15- Oct. 30, monthly or biweekly. 437-3333. gcm2

FLORIDA HUTCHINSON Island, Oceanfront, 2 BR, 2 bath, pool, sauna, \$1000 month of April. 868-8914 evenings. gcm3

ST. PETE CLEARWATER AREA 2 bedroom, 2 bath condo & studio apt. available on Gulf. Private beach, pool, jacuzzi, 2 week rental. Call 516 921-5057 after 7 p.m. weekdays/weekends anytime. hfm43

Vacation Rental

STRATTON VERMONT brand new condo. 1 BR, sleeps 4, F/P, ski in-ski out to Tamarack lift. Weekly \$600. Also 4 BR, 2 level chalet, sleeps 10, F/P, 10 minutes to slope. Weekly \$600. 516 367-9122. wm2

LOOKING FOR A DIFFERENT but affordable vacation? Why not rent our Sea Isle City, NJ condo? Located minutes from the casinos historic Cape May, and Wildwood amusements. One block to beach. Available weekdays, ends, or weekly, spring and summer. 746-5652. gcm1

CANDLEWOOD LAKE, CONN. Beautiful 4 BR contemporary with water view. Large LR with free-standing fieldstone fireplace. One and one half hours to L.I. Skiing nearby. Pictures available. 747-8850 eves. gcm2

DATYONA BEACH FLORIDA Furnished oceanfront condo, 2 BR, 2 baths, pool level, washer/dryer, TV, private patio, garage. Available April 1, minimum one month, long/short term. eves. 741-0533. gcm3

NORTH FORK ON PECONIC Bay 2 BR, 2 baths, private deck, maid service, \$3500 July, \$3500 Aug. Also 2 and 3 room efficiencies weekly, monthly, seasonal. 722-3458. gcm5

MYRTLE BEACH, SOUTH Carolina-2 BR, 2 baths, beachfront, ocean view apartment. Amenities include 3 outdoor pools, indoor pool with exercise and sauna, tennis, putting green, patio restaurant, and security guards. Golf courses, shopping malls, theatres, restaurants and recreational facilities locally. Golf packages, weekly rentals. 516-433-9269. hfm4

HILTON HEAD S.C. SHIPYARD Plantation. Evian Villa. 2 BRs, 2 1/2 baths, professionally decorated. On golf course, pool, sauna, jacuzzi, free tennis. Near ocean. 536-7680. gcm1

POCONO SKI CHALET 2 hours from George Washington Bridge, 3 BRs, fireplace, lift and cross country on property. Snow making equipment. Indoor sports complex, skating, ice skating, snowmobile. Major entertainment and other ski areas nearby. Weekly or weekends. Call 352-2130. wm2

NASSAU POINT-WATERFRONT Private beach & dock. Charming, 3 bdrm, and 3 bath. Modern waterfront view from every room. Call eves. 746-2151. gcm4

BELLPORT L.I. WATERFRONT cottage overlooking harbor. Wall Fire Island Ferry, village shops, golf course, and tennis courts. Boat ramp on grounds. Available full season. Weekends evenings after 8 p.m. 741-2110. gcm

VACATION IN VICTORIA home, Star Lake, Belmont VJ Central to auctions, church fairs, suppers etc. Antiquing, swimming, fishing, hiking, LR kitchen, 2 BRs, sleeps 4. Weekly or monthly. 352-6234. gcm5

SKI KILLINGTON VERMONT 3 bedrooms, 1 bath, fireplace, deck, mountain view. Weekly/weekend rental. Pictures available. 248-8618. gcm

Vacation Rental

SO. VERMONT SKI CHALET
4 hours from New York. LR, 3 BR's, FP. Cross-country skiing on property. 485-4187. gcm5

BERMUDA LOVERS
exclusive St. George's Club. New luxurious furnished 2 BR, 2 bath, private cottage, sleeps 6. Clubhouse, pool, tennis, private beach club, daily maid service. Golf and all Bermuda's attractions nearby. Daily or weekly, option to buy. Call Mr. W. Meyer 516-574-0211. gcm2

HILTON HEAD L AND SOUTH
Carolina, beautiful fully equipped ocean view apartment, terrace, large pool, tennis, restaurant, lounge, bicycles, catamarans, playground, fresh water fishing on premises. Call owner for discounted rates. 437-8034. gcm2

POCONO'S FAWN LAKE
resort, new 3 BR, beautiful lake with beach, restaurant, picnic area with barbecues, olympic outdoor pool, indoor pool, free fishing, boating, tennis, handball shuffleboard, and bocci. \$400 per week. Monday through Friday \$300. 437-8295. wm5

HILTON HEAD SO. CAROLINA
2 BR, 2 bath condo, sleeps 6, terrace on beach, pools, tennis courts, golf nearby, maid service, restaurant, \$500 weekly. Call 212 986-0730 days or 516 433-2266 evenings. wm5

2BR COTTAGE ON LAKE
in Vermont. Private beach, use of boat. Available weekly July-September \$225. per week. Call 364-1339 hm5

BUCKILL FALLS POCONO MTS.
6 bedroom private home. Golf, tennis, and pool. Magnificent facilities. Major ski areas. Weekly or monthly. Call 212-357-6000 9 to 5 p.m. gcm2

POCONOS FAWN LAKE
Resort. New 3 BR, beautiful lake with beach, restaurant, picnic area with barbecues, olympic outdoor pool, indoor pool, free fishing, boating, tennis, handball shuffleboard, bocci. \$300 Mon.-Fri. \$400 per week. 437-8295. gcm5

POINT LOOKOUT LARGE 5 BR
4 bath on beach, July or Aug. \$5000 per month. Days, 212 355-3030 eves, 516 889-0073. gcm5

Real Estate For Rent

BRAND NEW 3 ROOM
basement apt. Private entrance, near Hempstead Gardens RR station. EIK, all appliances, private bath. Very large bedroom and sitting rm. or study. Single person. \$450 month includes utilities. References. 483-0820. gcm2

WEST HEMPSTEAD HOUSE
for rent, 6 1/2 rooms, 3 BRs, LR/FP, DR, kitchen, 1 1/2 baths, breezeway. Available immediately. \$850 plus utilities. Principals only. 775-3167 or 593-7021. gcm3

GARDEN CITY LOVELY QUIET
furnished room, nicely decorated carpeted, private entrance, bath. Mature, non-smoker preferred. References 746-0018. gcm2

Real Estate For Rent

GARDEN CITY FURNISHED
room, private entrance, off street parking, private bath, near transportation. No smoking. 747-3590 9-5 p.m. Mon.-Fri. gcm4

BEAUTIFUL ROOM FOR RENT
Syosset area. For more information call 922-6237. hm5

GARDEN CITY SOUTH 5 RMS
LR, dining area, kitchen, 2 BR's, bath, finished basement with washer/dryer, garage. \$975. 742-4396. gcm3

STEWART MANOR BASEMENT
apartment, one BR, kitchen, bath, private entrance. Non-smoker. Single person. References required. 354-3151. gcm3

WEST HEMPSTEAD SUNNY
room, private home, kitchen privileges, share bath, suitable graduate student. Female only. Non-smoker. References. 538-6984. gcm3

WEST HEMPSTEAD 4 BR
Colonial, 2 baths, 2 car, walk to all. Children, pets okay. \$1200. Elaine Nolan 485-7054. wm2

WATERFRONT HOME FOR
Rent-2 bedrooms, country kitchen, double fireplace, dining room, 138 ft. private dock available, wild Bird Island Sanctuary opposite dock. One year lease, 2 months security, 1 month rent. \$1200 per month plus utilities. May 1st occupancy. Call 575-0574 Ext. 2637, or 2638 weekdays. After 5 call 226-4491 weekends all day. hm3

PRIVATE PEACEFUL SPACE
Suitable for use by psychotherapist- Mineola, PT or FT. 747-4861. gcm4

GARDEN CITY FURNISHED
efficiency apartment in private home. Separate entrance, private shower. Walking distance RR and stores. References and security. Call preferable before 9:15 a.m. 352-6641. gcm4

TWO RENTALS* PRIVATE
Home, Westbury/East Meadow School District: 1st floor including 2 BRs, large eat-in kitchen, LR, finished basement, appliances, garage, yard, \$800. plus utilities. Also, Furnished large upstairs BR, refrigerator, hot plate, share bath with male, private entrance. \$300. includes all. 681-4796 evenings/weekends. WM4

TWO OFFICES IN BEAUTIFUL
new professional suite on Franklin Ave. in Garden City. 248-1860. gcm2

SOUTHOLD LOVELY AREA
3 bedrm, year round home, walk to beach, full basement, large property, available immediately. No pets \$650 per month + utilities. 248-9436 or 298-4436. gcm5

PRIVATE FURNISHED ROOM
vic. Garden City, Nice area, nice home, Walk RR & stores. Working woman or female student. Share bath with same. Reasonable rent. Call Mrs. W. 437-5305. gcm5

GARDEN CITY LIVING ROOM
dining room, EIK, breakfast room, 4 bedrms, 2 baths, \$1400. June Michel Real Estate 1205 Franklin Ave. Garden City. 248-9503. gcm2

Real Estate For Rent

FRANKLIN SQUARE FIRST
Floor, 3 BRs, 1 1/2 baths, 1 child or singles okay. \$750 plus utilities. Large 2nd floor, 1 BR, full kitchen, bath, wall-to-wall \$575; Large 1 BR, full kitchen and bath, wall-to-wall \$550 pays all; 2nd floor, 2 1/2 rooms, \$400 plus electric. Many, many more in Mineola and New Hyde Park. Elaine Nolan 485-7054. wm2

GARDEN CITY FURNISHED
2 1/2 rooms, \$300 pays all; **Hempstead Cathedral Gardens 3** BR Townhouse, 2 1/2 baths, C/A, all appliances, parking \$950 plus utilities. March 15 occupancy; **Garden City Line, 2 BR, 2 baths, \$750; 2 BR including garage \$705.74; 3 rooms with large terrace \$667; Huge luxurious 2 room studio, separate entrance, 2nd floor, C/A, garage, \$650 pays all; Legal 2 family, 2nd floor 3 room apartment, all new \$550 includes all. **Garden City Park 1** BR carpeted, walk to RR \$500 pays all. **Garden City South 2** BRs, finished basement, garage, patio \$875 plus utilities. **Long Beach** furnished large 2 room Studio, \$900 pays all; **Elmwood** first floor and basement of house, 3 BRs, L/R, eat-in-kitchen, D/R, porch, use of garden \$850 plus 2/3 utilities. Elaine Nolan 485-7054. wm2**

BEDROOM SPACIOUS
carpeted in lovely home. Furnished like studio apartment. Very private, a/c, ideal for student. Mineola, near Garden City. \$60 per week. 746-4227 after 5 p.m. gcm4

STUART, FLA. CHOICE 1 BR
1 1/2 bath, furnished corner condo, garden type. Professionally decorated, pool, award winning club house, golf, shopping, 5 miles to ocean, low maintenance and taxes. \$48,500. Call 326-2880. gcm2

FURNISHED SUITE AND BATH
private entrance, walk Village, bus, train. Immediate occupancy. Call for appointment. 746-3124. gcm3

FLORAL PARK HOUSE SHARE
for student, female. Nice home, reasonable rent. References required. 718 347-7695 after 6 p.m. gcm5

ENTIRE SINGLE GARAGE
for dead storage. Garden City/Stewart Manor vic. You hold key. \$60 per month/3 month minimum Call 437-5305. gcm5

GARDEN CITY 2 ROOM
Furnished apt. in lovely private home. \$550 includes utilities. Private bath. Walk to train, bus, and stores. No smoking. 742-0878 prefer early a.m. calls, keep trying. gcm5

GARDEN CITY FRANKLIN AVE.
store, 300 sq. ft. Large front window. Ideal for small retail or beauty related service. 741-5555; 692-7487 eves. gcm3

FRANKLIN SQUARE FIRST
Floor, 3 BRs, 1 1/2 baths, 1 child or singles okay \$800 plus utilities. Large 2nd floor, 1 BR, full kitchen, bath, wall to wall, \$575; Large 1 BR, full kitchen and bath, wall to wall, \$550 pays all. Many, many more in Mineola and New Hyde Park. Elaine Nolan 485-7054. wm1

Real Estate For Sale

GARDEN CITY ESTATES
Custom colonial; fabulous condition; LR/fpl; DR; EIK, walnut paneled family room; 3 bedrooms; 2 1/2 baths; glass enclosed porch; 2 car garage; oversized plot. Principals only. \$359,000. 746-8432 or 765-5469. gcm2

WESTHAMPTON BEACH
great location on Bayfield Lane, recently renovated Ranch on 3/4 acre, 4 BRs, 3 baths, new eat-in-kitchen, large family room, LR, large brick patio, attached garage, lawn sprinklers, etc. For sale by owner at \$299,500. Principals only. Call Bob Dillmeier 746-3961. Wm3

CHERRY VALLEY CO-OP
1 bedrm, 2nd floor with attic, modern EIK, central A/C, dishwasher, washer/dryer. Principals only. \$87,000. 741-2019 days or eves. gcm3

SOUTHOLD PECONIC BAY
Bultheaded, deep water canal. New contemporary. Too many amenities to list. Must see! Southold secluded. Walk to beach. Maintenance free home. Too many amenities to list. Many extras. Owner will finance. Priced to sell. By owner. 765-3858. gcm3

GARDEN CITY 2 LEVEL 6 BR
Ranch. Separate quarters, aluminum, 3 1/2 baths, finished basement, gas heat, walk RR; schools, excellent condition, many extras, double blackout driveway. Principals only. \$370,000. 747-3520 or 201 941-3132. wm5

EAST WILLISTON STATELY
Colonial, 4 BRs, 2 1/2 baths, LR with F/P DR, 1/4 acre. \$289,000. Owner/Broker. 826-9797 or 742-0339. wm5

PECONIC NEW
contemporary Ranch, water view, wooded acre, 4 BRs, 3 baths, large decks, 2 car garage, a/c, all appliances. \$259,000. Call 765-1165. gcm5

GARDEN CITY PERFECT
mother/daughter, BR and bath down and 2 BRs and bath up. won't last. \$259,000; 7 BRs, 4 baths brick Colonial, 2 car \$625,000; C/A, 3 BR, 1 1/2 bath Colonial \$205,000; 6 BRs, 4 1/2 bath Tudor, gorgeous throughout \$700's; 4 BRs, 3 1/2 bath Contemporary, Large BR with Jacuzzi. \$299,000; Hazel C. Smythe, 132 7th St. (Look for Red Door) 741-4640. wm2

EAST HAMPTON BEACH
and marina rights, 3 BRs, 2 baths, fpl on 1/2 acre. Walk to private membership beach in most exclusive area. Won't last! A steal at \$125,000. **Spring Brokerage** (off Springs Fireplace Road) East Hampton. 324-0335 or 324-3135. gcm2

GARDEN CITY MOTT
Colonial, stonefront, living room with fireplace, 3 bedrooms, formal DR, 2 car detached garage. Slate roof, patio, low taxes, nicely landscaped. Principals only. \$279,000. Call 914 793-0116. gcm3

GARDEN CITY CENTRAL
Section. Large Barnes split, 100 x 125 lot; cathedral LR; DR; e-i-kit; 2 car garage, electric eye; greenhouse; 3BRs; fam. rm; den; central air. \$300's. Owner. 747-3030. gcm5

Real Estate For Sale

GARDEN CITY 8 MORE T-W EXCLUSIVES

Mott Section-Unusual charming 3BR, 1 1/2 bath colonial, living room with fireplace, modern kitchen, dining room; large glass wall den, low taxes, beautiful \$265,000. **Estate Section-Victorian Colonial**, SBR, 2 fireplaces, new kitchen, new baths, low taxes. Mid \$300's. **Estate English Colonial-Living room/fireplace,** formal dining room, den, new EIK, 3BR, 3 bths, 2 car \$345M. **Perfect Tudor-Living room/fireplace,** dining room, modern EIK, 4BR, 3 baths, family room, \$525M. **One Chance Prime Estate** Colonial, 4 large bedrooms, 2 baths, on 2nd. Living room with fireplace, dining room, family room with fireplace, powder room, laundry on 1st. Large modern EIK, 2 car, all amenities. \$595,000. **Tudor With Turret**-Charming SBR, 3 1/2 baths, living room/fireplace, formal dining room, large country kitchen, family room, 4 car. \$625,000. **Solid Brick Estate Colonial-Living room/fireplace,** large formal dining room, ultra modern EIK, sunporch, 5BRs, 3 1/2 baths, finished basement, C-A. \$675M. **Cherry Valley Co-Op 1 BR,** private entrance, walk to LIRR and stores. \$89,500. **Taylor Warner,** 101 7th St. Est 1919 516-741-4422

GARDEN CITY SOUTH
3 BR brick Split, 2 baths, finished basement, 2 car, super-mint! \$235,000. Elaine Nolan 485-7054. wm2

CUTCHOGUE GOLFER'S
Paradise on one acre, Fairway Farms, New England expandable cape, master suite plus powder room, LR/FP, DR, den, kitchen and laundry room on 2nd, 2 BR's plus full bath on first, 2 car garage, full basement. \$169,900. 294-8025. gcm3

HAMPTON BAYS ONE
Bedroom coop, waterfront, floating dock, pool, \$212 monthly maintenance. \$58,000. 868-8914 evenings. gcm3

HAMPTON BAYS NEAT
efficiency coop, waterfront, wooded surroundings, \$164 monthly maintenance. \$32,000. 868-8933 evenings. gcm3

NORTH FORK-LAUREL
3 BR, 2 bath ranch; LR/FPL; DR; sunken den. On fully wooded 1/2 acre. Deeded beach rights, 500 ft. walk to beach. Assumable mtge. Asking \$155,000. 298-5004 gcm5

CUTCHOGUE-GRACIOUS
Living in private community, New England Colonial; 3 BRs; 3 baths; DR; Florida room; fully equipped gourmet kitchen; bright spacious rooms. Beautifully landscaped acre. \$293,000. **Greenport-4 BR** ranch in wooded setting; EIK; DR; 2 car garage. Has fin. bsmt. with extra bedrm. \$175,000. **Sidco-Radford Realty,** Main Rd. Mattituck, 298-8556. gcm2

GARDEN CITY-CENTRAL
Section, 5 BR; 2 bath expanded ranch, LR; DR; new EIK; jalousied terrace; 2 car garage; huge bsmt; 2 zone heat; central a/c; 80 x 125 property. Lawn sprinklers. Redecorated and immaculate. Low taxes. Asking \$359,000. Principals only. 486-1534. gcm5

Real Estate For Sale

LAUREL DEEDED 200' bay Rights. Young Colonial wooded acre, private community, 4 BR's, 3 baths, DR, LR, family room/FP, EIK, wall to wall carpeting, appliances, full basement, 2 car garage, many extras. \$175,000. Owner 298-4812 gcm3

MARCO ISLAND FLA. CONDO for sale or rent. 1 BR, 1 bath, furnished, pool and tennis. 1 block from beach 516 742-0210. wm2

CLEARWATER FLORIDA Countryside area garden type condo. 2 baths, 2 BRs, pool, unfurnished. \$55,000. 516 742-0210. Wm2

NORTH FORK LAUREL 3 BR, 2 bath ranch, LR/fpl, DR; EIK; deck, 2 car garage, deeded beach rights. Assumable mortgage. \$145,000. Call 298-5299 gcm2

GARDEN CITY ESTATES 4 BR, Tudor; 2 1/2 baths; Living room with fireplace; sliding doors to patio from sunroom; fin. bsmt; lovely large yard. Low taxes. \$298,000. 248-0044. gcm5

MATTITUCK INLET-BOATER'S Ahoy! 150 ft. waterfront, deep water, dock, 2.7 secluded wooded acres. Charming house with separate guest quarters. \$375,000. Summer Rentals Available. Silkworth Realty, Mattituck. 298-4485 gcm2

GARDEN CITY CO-OP 2 BR, 2 bath; a/c; burglar alarm; new appliances; laundry facilities in apt. Walk to stores. \$200,000. 747-0180 gcm5

WE HAVE BUILDING LOTS From \$30,000. Waterfront lots from \$135,000. Houses from \$119,000. If we can not show you a house you like, buy a lot and build your own. Wm. B. Smith R.E. 734-5657 gcm2

CUTCHOGUE-1ST OFFERING Mini 3 or 4 bedrm, deluxe ranch. LR/FPL; fam. rm/fpl; lovely master bedrm, suite; 3 baths; private setting. Relax and enjoy the pool. Best of everything. \$435,000. Mattituck-Lakefront-2 story; 3 bedrooms; 3 baths; LR; formal DR; workshop; 2 car garage, many extras. Terms possible. \$199,900. Southold-1st offering. Year round cottage, LR; e-i-kit; bath. Walk to beach. \$105,000. Cutchogue-1st offering. 3 bedrm. ranch; LR; DR; e-i-kit; full bsmt; garage. Walk to water. \$140,000. Cutchogue-1st offering. 1+ bedrm. ranch. LR; EIK; on 1/2 acre. Near town and schools. Exclusive. \$146,000. Marilyn Lang R.E. Cutchogue. 734-6472 gcm2

GARDEN CITY MOTT Colonial, stonefront, living room with fireplace, 3 BRs, formal DR, 2 car attached garage. Slate roof, patio, low taxes, nicely landscaped. Principals only. \$279,000. Call 914-793-0116 gcm3

BETHPAGE \$129,990. RANCH With income. The buy of the season! 4 bedrooms, 3 1/2 baths, eat-in kitchen, dining room, cathedral ceiling living room. Two car garage, finished basement. Match A Home Realty. 516-935-5959 WM2

Real Estate For Sale

GARDEN CITY 3 BR RANCH 3 baths, eat in kitchen, every custom amenity plus professional suite, estate setting on 3/4 lush acre \$625,000; 5 BR Colonial 4 baths, large country kitchen, den, spacious and gracious, 80x120 on numbered street. Reduced to \$450,000; 4 BR Dutch Colonial 2 1/2 baths, 2 F/Ps, den plus sunroom, new in and out on 100x125 plot \$429,000; 3 BR Barnes Ranch, 3 baths, library, F/P, C/A, finished basement, wet bar, landscaped acre \$425,000; 3 BR Brick Split 2 1/2 baths, eat in kitchen, F/P plus beautiful built-ins, den, jalousied porch. \$359,000; 4 BR 12 years young Colonial 2 1/2 baths, eat in kitchen, cathedral ceiling family room, \$355,000; 5 BR Expanded Split 3 baths, eat in kitchen, suitable professional, 2 car, 100x150, \$325,000; 5 BR Colonial 3 1/2 baths, Estates Colonial, alarmed \$309,000; 3 BR Split 2 1/2 baths, ceramic tile entrance, underground sprinklered \$299,000; 3 BR Cape, 2 baths, 2 F/Ps, mint condition \$250,000; Hempstead Cathedral Gardens, Scarlett's Dream Home! Dramatic marble entry leads to sweeping stairway, 5 BRs, 3 1/2 baths, sunken family room with wet bar, all amenities at \$575,000, it will soon be "Gone With The Wind"; Exclusive Brick English Tudor 5 BRs, 2nd floor, 4 1/2 baths, sunken L/R, 2 dens, Terraced Gardens on lush 1/2 acre, thousands below market value, asking \$395,000; 5 BR C/H Colonial 2 1/2 baths, 28' LR with FP and sunroom, 20x30 Florida room, gourmet kitchen, breakfast nook, butler's pantry, finished basement, landscaped acre \$279,000; 3 BR slate roofed Tudor 1 1/2 baths 24' LR, ultra eat in kitchen, includes trash compactor sprinklered, super mint 75x100, \$220,000; 3-4 Quaint French Tudor, 2 1/2 baths, new eat in gourmet kitchen, banquet DR, master suite FP with dressing room, LR/FP, den with brick walled FP, 110x133 plot \$169,000; 4 BR C/H Colonial 10 years young, 2 1/2 baths, eat in kitchen, C/A, den F/P, \$159,990; 3 BR slate/stone/brick Colonial Cozy F/P, 1 1/2 baths, great starter house \$145,000; 3 BR brick Townhouse 1 1/2 baths, country kitchen, C/A, finished basement, new wall-to-wall, gas heat, \$52 monthly maintenance \$125,000; For The Investor, legal 2 family, 4 over 5, new in and out \$115,000; 4 BR Cape, 2 baths, finished basement, mint condition \$110,000; 3 BR brick Tudor, new eat in kitchen, assumable \$42,000 8 1/2% mortgage, \$99,000; West Hempstead 4 BR large 4 level Split 2 1/2 baths, eat in kitchen, den with built ins, roofed patio with 5 room office suite, suitable professional \$275,000; 3 BR brick Split, 2 1/2 baths, gourmet kitchen, den, walk RR, \$190,000; 5 BR High Ranch, 2 baths, separate apartment for Mom \$189,000; 2 BR brick/stone Colonial Dollhouse 2 baths, cozy F/P, eat in kitchen, finished basement, 3 car on 75x225 park like plot \$175,000, Elaine Nolan 485-7054. wm2

SOUTHOLD COLONIAL Country Cottage. Brilliantly renovated. Walk to beach, village, churches, etc. For sale by owner, \$117,500. 765-1410 or 765-5533 gcm2

Real Estate For Sale

SOUTHOLD WATERFRONT New, Custom Contemporary on deep water canal 200 yards to Bay overlooking Shelter Island, 3 BRs, 3 baths, kitchen, D/R, L/R with Cathedral ceiling and F/P, decks, C/A, 1 1/2 car garage, extras. Choice location \$295,000. 516-621-6822 WMS

BRICK BIRCHWOOD SPLIT in prestigious Salsbury Estates of Westbury, East Meadow School District. Large corner property, professionally landscaped with underground sprinkler system. Outside patio; 2 1/2 car attached garage with garage door opener. House has 3 gorgeous bedrooms; 2 1/2 baths, banquet DR; tremendous LR with cathedral ceiling and mirror walls, Large fam. rm. with built-ins and outside entrance. Exquisite kitchen with beautiful cherry cabinets. All new appliances. Amana refrigerator, GE self-cleaning oven, Kitchen Aid dishwasher etc. Our lovely home is completely carpeted, has central air and is burglar alarm-ed. Full bsmt, with washer and dryer. This home is in tip-top shape. Owner retired and relocating. Principals only. \$215,000. 997-8922 gcm2

NEW HYDE PARK - SOUTH of Hillside. Wideline Aluminum Cape, 4 bedrooms, 2 baths, formal dining room, EIK, finished basement with kitchen, new two zone gas heat, garage. Principals only. \$185,000. Write to: Williston Times, PO Box 37-G, Williston Park, N.Y. 11596. wm4

MARCO ISLAND FLA. FULL CONDO, furnished, 2 BR, 2 baths. Golf nearby. View of bay & pool. Tennis, private beach and boat facilities. 212 581-1154 or 516 741-4710. gcap2

FLORIDA-BEAUTIFUL Property for sale on prestigious Sewall's Point, Stuart, 100' x 200', fruit, palm trees, fishing, beach... \$39,000. 305-283-5818 gcm2

GARDEN CITY 5 BEDRM, expanded ranch; Mott section; 3 full baths; fin. bsmt; LR with marble fpl; formal DR & many extras. Must see to believe. Prin. only. Low \$300's 248-0437 gcm4

CHERRY VALLEY CO-OP 2 bedrooms, 2nd floor with attic; w/w; mod. e-i-kit. Walk to RR and stores. Private entrance. Principals only. \$119,500, 248-0941 eves. gcm4

SOUTHOLD WATERFRONT secluded area; picturesque backyard setting; 98 ft. on inlet, with dock. Only a few hundred feet to bay by boat or excellent swimming. Private deeded beach; custom built; 4 bedrooms; 2 1/2 baths; e-i-kit; formal DR & LR; fam. rm; full bsmt, pool table & bar; 2 car garage; central a/c; appliances & many extras. Owner asking \$300,000. 765-9268 gcm4

ANCRAM N.Y. FOUR SEASON vacation home, cream puff. Reduced for quick sale. LR/fp, 2 BR's, tile bath, EIK, deck, plus fully insulated heated guest house on 4 surveyed tree acres. 2 hours from Nassau County, minutes to large lake, state park, 1/2 hour from skiing. Principals only 742-8043 and 518 398-7596. gcm4

Real Estate For Sale

WEST HEMPSTEAD ONE ACRE corner property zoned for light industry for sale or joint venture with developer to build medical or office building. Call Mr. Owen 481-6290. gcm4

JAMESPORT SUMMER HOUSE 4 BRs, 1 1/2 baths, 2 car garage, beach rights. Principals only. \$134,900. Evenings 201 967-1033. gcm4

SOUTHOLD 85 FT. ON DEEP Water bay inlet, 200 yards to open bay. New 3 Bedrm. contemporary; 2 baths, open area for large LR with fireplace; DR and Kitchen. Dock your own boat at your front door. Desirable, private community. \$310,000. Mattituck-Lakefront, 2 story Colonial; 3 bedrooms; 2 1/2 baths; everything top quality. Move in condition. Swimming, boating, great fishing. Large workshop/cottage + garages. Near village. \$199,900. Mattituck - New contemporary with fantastic view. LI Sound sandy beach nearby. 3 bedrooms; 2 1/2 baths. Spacious LR, dining and kitchen area. Fireplace. Full cellar. Cedar siding. Excellent area. \$340,000. Baker Real Estate, Southold, 765-2310 gcm2

ROSLYN VICINITY Albertson-Herricks Schools. Charming Center Hall Colonial, 3 BR, formal DR, LR with French doors, 2 sunrooms, enclosed porch, fenced yard, 2 car garage with electric eye, new oak country kitchen with pantry, brick driveway, full basement, new burner, walk to shops and transportation. Move-in condition, low taxes. Principals only. Asking \$179,000 (flexible) Call owner 742-2999 or 496-7900. wm4

GARDEN CITY VICINITY Cathedral Gardens; Spotless Tudor 3 bedrooms, 3 baths, modern EIK, formal DR, quiet yard, fireplace, garage, low taxes Asks \$210,000; Spectacular Ch Colonial 1/2 quiet acre, 4 BRs, 3 baths, bright oak kitchen, breakfast room, formal DR, sun porch, finished basement \$259,000; Just Listed Colonial-3 large bedrooms, 1 1/2 baths; formal DR; modern kit; breakfast area; den; fpl. Won't last! Only \$159,900; Viking Homes 538-8615. "Cathedral Gardens Own Broker" gcm2

SOUTHOLD-NEW 3 BEDROOM 2:bath contemporary; landscaped acre; six zone irrigation system; 2 car garage; decks; heated jacuzzi; fireplace; oak floors. Picture perfect. \$160,000. Owner, 283-4120 (office); 734-7171 home. gcm4

For Sale

GE 40 INCH SELF CLEANING electric oven and stove, 7 years old. Best offer. Dinette set, table with leaf and 4 chairs. \$100. 248-6132. gcm5

TWO '13" X BODY RIMS \$20 354-1808. gcm5

BEDROOM SET FRUITWOOD triple dresser, mirror, chest of drawers, two end tables, queen-size headboard and bed frame. \$500. Free standing wrought iron breakfast nook, with cushioned seats and backing, 2 benches, swivel chair and rectangular table. Like new, 2 years old. \$500. 248-8995. gcm5

For Sale

VW '81 RABBIT 4 DOOR 31K, \$4100. Gulbransen console piano, \$950. White Lenox weave custom drapes, 96x172. New salon portable hair dryer, \$25. Piano stool \$20. Metronome \$20. Child's 8 track player \$10. 248-5671. gcm5

NEW BEAUTIFUL WILDCAT fur coat, fox collar. Size 8-10. "Summer price". Real bargain. Must sell 741-6108. gcm5

DEN FURNITURE RUSTIC wood with brown corduroy cushions, couch, love seat, chair with ottoman, cocktail table, lamp table, bookcase. \$350. Black dyed mink coat size 10 petite. \$550 Excellent condition. 486-0602. gcm5

SLOANE'S FRENCH provincial sofa, 2 T cushions, fruitwood, 7 ft. Ecru color, A-1 condition. Call after 6 p.m. 742-0009. gcm5

KITCHEN APPLIANCES Harvest Gold, 20 cu. ft. frost free refrigerator, Sears self-cleaning electric range with eye level double oven and dishwasher. Good condition. Asking \$400 for all. 741-6188. gcm5

DINING ROOM MAHOGANY drop leaf table, junior china and server. Bedroom, double bed, new spring and mattress, 2 night tables, lamps and dresser. 354-4466. gcm3

HAITIAN OIL PAINTING Primitive by Prefete Duffaut, 20"x24", with appraisal certificate. \$100. Call 741-6090-6-9 p.m. gcm3

WURLITZER CONSOLE ORGAN with bench. Mint condition, beautiful sound, traditional style, dark wood. Owned by professional. Must sell. Excellent value at \$850. 248-7379. gcm4

DINING ROOM SET GOLDEN oak, Americana, 52" round pedestal table with hand carved scrollwork matched on 2-18" leaves, 6 spindle chairs, (4 side and 2 arm). \$1500. Call 516 248-2443. wm3

VERY FINE QUALITY 1/4 carat diamond. Retail price \$375, but selling at \$300. Call bill 516 328-0544 evenings. wm3

GIRLS BEDROOM SET Single canopy bed, dresser with mirror, lingere chest, night table. Antique white, very good condition. \$400. Magnovox stereo console, needs work, antique green cabinet. Early American cabinet in very good condition, \$75. 352-4579. gcm2

WATER BED KING SIZE deluxe wood frame and headboard, heater. May be used with conventional mattress. Best offer. 437-8825. gcm3

TEENAGER BOY'S SOLID LITE oak BR set. Trundle bed, double dresser with hutch, desk. Excellent condition \$425; Teenager's antique Thomasville desk with hutch and chair. Excellent condition. \$250. Call 747-8366. wm5

SELLING RUTH ECKSTEIN Print "Greek Island Greck Sun" (14/50), \$250 or best offer. Call evenings 931-8480 hm5

For Sale

CRAFT-A-MATIC DUAL KING
Size bed with massage. New, never used, originally \$1750. Selling \$950. Brass queen size head board, new, originally \$750, \$175. Two French Provincial end tables with glass tops \$35 each. Call 921-4026 after 7 p.m., all day Sat. & Sun. hm5

MOVING MUST SELL TEEN
Bedroom co-ordinated walnut units. Double dresser, 2 chests, desk, bookcase, Hutch \$250. Oak ladder back chairs, 5 with rush seats \$225. Contemporary couch curved sectional, off white with brown and black tapestry print \$275. Evenings 496-3932. hm5

DINETTE SET CHROME/WOOD. 4 chairs, round table. Perfect condition \$225. Loveseat upholstered, beige and white, like new \$250. Vertical blinds, custom beige, double and single. Perfect \$200. Heath Kit TV, 19", Mahogany cabinet \$50. PR 5-2876 before 10 a.m. or PI 7-6553 anytime. wm5

REDECORATING - 88 INCH SLIP
covered sofa, blue & beige, \$150. Two pair single drapes, 1 double pair, oyster white, 84 inches, \$60 for all 746-5910. gcm5

OVERSTUFFED LIVING ROOM
set, 3 pieces, + 5 piece dinette set, bookcase. 746-1842 eves. gcm5

BOYS ROSS APOLLO 3 SPEED
bike. Brown, chrome fenders, excellent \$95. Call 747-0014 after 6 p.m. gcm2

WHITE Sloane's Decorator
Sofa; 4 throw pillows, 9x15' lemon yellow wool rug and 15x20' banana yellow wool rug. Real bargains! 741-8838 after 7:30 p.m. and weekends. gcm3

ANTIQUES-SHERIDAN
Breakfront/bookcase, circa 1800, \$5500; Four poster canopy bed, circa 1780, \$1200. Some additional pieces from same period. Large Victorian fireplace, \$1200, 432-5783 eves. gcm4

60 INCH OAK TRESTLE TABLE
with formica finish; 4 chairs; two 8 inch leaves. Mint condition. \$450. Call 489-9725. gcm4

FAST SALE-FIRM PRICES!
80 inch off white couch with custom made slip covers, \$150; kid-proof high dresser, \$50; Lime green and white carpet, \$30 and two lime green lamps, \$40 for both. 742-7495. gcm4

MATCHING SOFA & LOVE
Seat, beautiful rattan frame, ivory upholstery, 6 months old. Both for \$900. Will sell separately. King sized headboard, hardwood with wrought iron inserts. Excellent condition. \$100. 326-2359. gcm4

FITCH COAT SIZE 10
Top of boot length. Good condition. Just reduced. \$300. 742-1047. gctfm4

GIANT GARDEN CITY GARAGE
sale, Sat. March 30, 10-4 p.m. Garden City Nursery School, 50 Cherry Valley Ave. (next to Garden City Pool) Consignment and donations by over 100 families. gcm5

Garage/Tag Sale

FLEA MARKET SAT. MARCH 9
10-5 p.m. Our Savior Lutheran Church, Jefferson & Willis Ave., Mineola. New and used bargains, plants, novelties, bric-a-brac, housewares, jewelry. Refreshments available. Hot dogs, soup, beverages, and cake. hm2

WALT WHITMAN SCHOOL
Fair-March 9, 11 a.m.-4 p.m. at Walt Whitman School, Woodbury Road, Woodbury. Contests, games, prizes, make-up, crafts, something for everyone. Refreshments available. hm2

ANTIQUES & COLLECTIBLES
Auction St. Andrew's, Campbell Ave., Williston Park. Sat. March 9-10 a.m. Clocks, gold and silver jewelry, train sets, depression glass, Fostoria, pattern and cutglass. RS Prussia, vintage clothing, linens, wicker, oak. Artist signed paintings, etc. etc. Sale tables and inspection 9 a.m. wm2

MOVING SALE GARDEN CITY
40 Mulberry Ave. March 15 and 16, 10-4 p.m. Giveaway prices on toys, books, and odds and ends. Rain or shine. gcm3

HEMPSTEAD 159 CATHEDRAL
Ave. (near Garden City & A&S) Sat. and Sun. March 16 and 17, 10-4 p.m. Rain or shine. Furniture, office desk chairs, framed pictures, brass fireplace fan, Rosenthal, children's and adult's clothing, baby items, toys, lots of bric a brac. gcm3

Services

INCOME TAX PREPARATION
by 2 former IRS agents with 30 years experience. Reasonable rates. Call Anne or Roger M. Gedgard 746-0425. gcap2

CARPENTRY QUALITY WORK
performed on all types of carpentry from basements to attics. Free estimates. Call Mike anytime, 489-8840. Thank you. gcm1

EXPERT PIANO TUNER & craftsman in repairs. My rates are reasonable and my experience merits your consideration. My family has been in the piano business for generations. Robert Sclascia 731-3056. gcap1

UNIQUE PARTY SERVICE
With a Personal Touch By Sheila Professionally Coordinated Parties

Complete Service-Home, Office Dinner Parties-Cocktail Parties All Occasions For Consultation... Call 354-5298. gcm2

NASSAU CONTRACTORS JAMES F. MENTZ GENERAL CONTRACTOR
Carpentry*Alterations Slate Roof Repairs Roofing*Gutters*Leaders Kitchens*Attics*Basements Lic. #401750000 593-2933. gcap4

LADIES RELAX AND ENJOY Your Next Party!
Catering and Experienced Professional Services for assisting with Preparation, Serving and Cleanup, before, during and after your party. Bartenders Available. Call Kate (aka Donna) at 248-1545 or 746-8264. gcm1

Services

SKYLINE IMPROVEMENTS
Carpentry
*Roofing*Aluminum Siding Soffit & Trim Treatment Wood Shingles & Shakes All Types Of Window & Door Replacements *Sash Cords Replaced *Structural Repairs & Renovations Custom Formica Work Expert Work - References Reasonable Prices*Free Estimate Insurance Estimates Written Call FRED 654-2610 or 931-1155. Wm2

LET ME TAKE CARE OF ALL
Your sewing needs. Bring me your pattern, material and ideas for gifts, clothing etc. Alterations also done. Quality work for less. Call Peggy anytime 933-2713 hm5

HANDYMAN SKILLS
all repairs and painting. References. Family man. Call Lewis 489-3385. wm5

INCOME TAX
Personal & Business. Reasonable fees. Joseph Cervone CPA 212 815-0505 9 a.m. - 5 p.m., Mon.-Thurs. 516 742-0462 evenings. 516 437-2800 Fri.-Sun. gcap4

HOWIE'S TREE SERVICE
Pruning, topping, & tree removal. Also stump removal, broom clean. Seasoned firewood. Fully insured. Nassau County license 2901460000. 766-2894 or 599-0794. gcm4

CARPENTER
Cabinets, bookshelves, doors, windows, ceiling, paneling, additions. Excellent finish work. Call John, 248-8163. Siding, roofing & slate repairs. Call Frank, PY 6-7638. LIC # 18300240000. gcap2

"FRED WILL FIX IT" PAINTING
Interior & Exterior Repair Sash Cords & Windows Light Switches Clean Out Gutters General Handyman *Satisfaction Guaranteed* Call Fred Lee 794-7405. gcm14

VINCENT NASO
Professional Painter & Decorator Interior * Exterior * Paper Hanging* Over 30 years experience, neat, clean, Excellent work. 100% guaranteed. Call Anytime 328-0028. hm3

PAINTING
Exterior Interior Benjamin Moore Paints Reasonable Prices Free Estimates Jimmy Mac 248-7314. gcm3

BUILD WITH BRICK
Stoops*Fireplace*Patios *Driveways *And All Types of Brick & Stone Work Quality Workmanship at Reasonable Prices Satisfaction guaranteed no job too small. Waterproofing Estimates 538-3813 Lic. #H1735940000. gcm14

DO YOU ADMIRE A FLOWER
garden that enhances a home? If you are willing to try but need help, please call for consultation appointment. 747-6589. gcm3

Services

HOME OWNERS CUSTOM
Design your own kitchen, bathroom. Our skilled European craftsmen can create designer kitchen cabinets, vanities & mica furniture at reasonable rates. Protect and increase the value of your home. For free estimate call 328-6834. gcm2

HIGHLAND PAINTING & DECORATING
Interior/Exterior Residential-Commercial Wallpapering Wood Refinishing Benjamin Moore Paints Used *All Work Guaranteed* References Upon Request For Free Estimate Call Frederick T. Couher 294-7547. gcm13

PROFESSIONAL BARTENDERS
for any occasion. Garden City based. Highly recommended. Complete service available. Please call 742-1261 afternoons/early eves. gcm3

LOCAL, IMMEDIATE, FAST
reliable moving, delivery, messenger service. Anywhere in tri-state area, 24 hour availability. Stralt-Line Service 741-8123. gcm4

GARDEN MAINTENANCE
Spring clean ups, landscaping design, weekly maintenance, tree, lawn & shrub spraying. Free dormant oil spray - call before March 25. \$35 value. Free estimates. Quality work at reasonable rates. Maffucci-Watras Landscaping & Fences Inc. 747-2078 or 742-0238. gcm2

LAWNS CUT \$12. ALSO LEAF
raking, trimming & edging. Call Tom at 741-7884. gcm5

FENCES STOCKADE, CHAIN
link, post & rail, all types fences. Stockade sale, 100 ft. or more, 1 free gate, value over \$100. Free estimates. Quality work at reasonable rates. Maffucci-Watras Landscaping & Fences Inc. 747-2078 or 742-0238. gcm3

LOSE WEIGHT
The new herbal way of life. Lose 10-29 pounds per month naturally safely without harmful drugs, exercise, hunger. Eliminate cellulite. Retain high energy, good health. New herbal way of life. Betty Basile 496-4865 Income Opportunity Available. hm2

Business Opportunity

FOR THE INVESTOR
Hempstead Manor, Legal 2 family, 4 over 5, all new in and out. \$115,000. Elaine Nolan 485-7054. hm2

DRIVERS-START YOUR OWN
Business. \$4500. Hack license required. Call day or eve. 354-2040 or 432-6556. gcm12

PIANO INSTRUCTION
Garden City resident, with 35 years experience and a B.A. in Music and Education, has room in her studio for additional students. Beginners to advanced. My home or yours. Call Mrs. V. Trains, 746-2526. gcm4

CAKE AND PASTRY ROUTE
For sale in Garden City area. Excellent clientele. Short hours, high net. 593-7021. gcm2

Instructions

RITA LUCY'S GARDEN CITY MUSIC STUDIO
Piano Violin Viola Guitar Theory, Harmony College Preparation All ages and all levels The best in music education. 30 years in area 248-7379. gcap4

BUSINESS FOR SALE
Cleaning service. Call 248-7951 after 6 p.m. gcm13

GUITAR*PIANO*DRUMS WOODWINDS VIOLIN*VIOLA
Lessons In Your Home by working professionals Free Guitar Rental Serving All Nassau George Schlageter 294-0994 747-7009. gci2

Entertainment

CHILDREN'S CERAMIC & Crafts Birthday parties. Certified art teacher runs party in your home. Children take home personalized art pieces as their prize. All materials included and affordable. 742-3085. gcap4

Professional Services

MIND STRESS?
Muscle Tension? Enjoy Massage Therapy in your home by the Masseur of the Bath & Tennis Club. Member: N.Y.S. Society Medical Masseurs. Male/Female Michael Corr 633-0540. hapi

TAX RETURNS PREPARED
by local CPA. Reasonable rates. Interviews in my home or yours. Barbara Greene 489-8382. gcap2

Wanted

LIONEL TRAINS AMERICAN
Flyer, Marklin & Ives toy trains wanted by east coast collector. Guarantee top dollar, nobody pays more! Also purchasing antiques, toys, stamps, coins, Hummels, jewelry. 516 334-4046. gcm5

DOLLS WANTED
I collect dolls and other doll memorabilia - new or old. What do you have for sale? Call me at 433-3876. hm2

WE BUY HARDCOVER BOOKS
Art *Antiques *Photography Hunting * Baseball * L.I. History Illustrated Books *Mysteries and many other topics. We do not buy School Books. Call Jim or Harvey at 486-9427. Once Upon A Time Books. tfnhm2

DO YOU HAVE OLD COINS???
U.S. or Foreign. I will pay a good price. Coin collecting is my hobby. Call me at 223-4236. hm3

OLD OIL PAINTINGS WANTED
any condition (even torn). Also: old frames, pocket watches used jewelry, clocks, linens, rugs, furniture, antique trunks, and sewing machines, figurines, coin and stamp collections, old autographs, books, and magazines. Also need violins, banjos, mandolins, pianos. Will pay cash and pick up immediately. Please call Sandy 574-0216. hm5

Wanted

OLD, OLD PAINTINGS & ART work wanted. Any size, any condition. Top cash paid immediately. Call anytime, 222-6215. gcm5

STOCK CERTIFICATES/BONDS Your old documents issued by now bankrupt companies have value to me as collectibles. Call 364-2246 hm3

OLD GUNS-SWORDS Binoculars, model engines, bamboo fly rods. Call 825-0979 or 364-2246 hm3

ANY TYPE OF ANTIQUES Victorian furniture wanted. Cut glass, paintings, old jewelry, china, silver, trunks, linens, wicker, frames. Cash paid. Tom Cafaro, Westbury 334-4117. gcm1

LIONEL AMERICAN FLYER and other old toys (tin wind ups and toy soldiers, etc.) trains or accessories wanted by Garden City collector. Any condition. Immediate high cash paid. 248-4899 gcap2

TRAINS AND TOYS Lionel Flyers, lves, etc. Sets, pieces, accessories, soldiers, forts, trucks, cars, wind-ups or push. Games too! Highest immediate cash paid. 581-2999 hm3

TV COMMERCIALS WANTED babies to two years. Needed: two photos (non-returnable) date of birth, hair, and eye color, height and weight. Must be outgoing and friendly. Local manager. Write Box "G", Garden City News, 821 Franklin Ave. Garden City, N.Y. 11530. gcm4

HOUSEHOLD ITEMS Furniture, sporting equipment, bric a brac, etc. Donate or sell on consignment at gigantic Garden City Nursery School garage sale. Sat. March 30. For consignment information call 354-3332 or 481-2096. For donations call 747-4492 or 481-5989. gcm5

Lost & Found

LOST IN GARDEN CITY Diamond and sapphire ring in shape of two flowers with diamond in middle surrounded by sapphires. White gold setting. Reward 746-7286. gcm3

LOST IN GARDEN CITY WHITE neutered male cat. Light tan ears and nose. Blue eyes. "Shalli". Reward 352-3514. gcm5

Personal

MATURE WOMAN TO ACT AS companion for my mother and able to drive. Needed for occasional weekends and vacation weeks. Call 921-0178. hm5

I LIVE IN SYOSSET, WORK IN Farmingdale and need transportation to and from work. Willing to compensate retired person or worker going to this area. Call 921-0178. hm5

CALL INPUT 931-0027 24 hours a day! Answer the Question of the Week or express an opinion on other topics of interest to readers.....

Personal

NOVENA TO ST. JUDE Oh Holy St. Jude, Apostle & Martyr, great in virtue and rich in miracles, near kinsman of Jesus Christ, faithful and intercessor of all who invoke your special patronage in time of need, to you I have recourse from the depths of my heart and humbly beg to whom God has given such great power to come to my assistance. Help me in my present and urgent petition, in return I promise to make your name known & cause you to be invoked. **St. Jude, pray for us all who invoke your aid. Amen. Say 3 Our Fathers, 3 Hail Mary's, 3 Gloria's. Say for 9 consecutive days. Publication must be promised. This novena has never been known to fail. Thank you for answering my prayers. A.B. hm2**

NOVENA TO ST. JUDE Oh Holy St. Jude, Apostle & Martyr, great in virtue and rich in miracles, near kinsman of Jesus Christ, faithful and intercessor of all who invoke your special patronage in time of need, to you I have recourse from the depths of my heart and humbly beg to whom God has given such great power to come to my assistance. Help me in my present and urgent petition, in return I promise to make your name known and cause to be invoked. **St. Jude, pray for us all who invoke your aid. Amen. Say 3 Our Fathers, 3 Hail Mary's, 3 Gloria's. Say for 9 consecutive days. Publication must be promised. This novena has never been known to fail. Thank you for answering my prayers. A.A. wm2**

HOLY SPIRIT WHO WHO SOLVE All problems, who light all roads, so that I can obtain my goals. You who give me the divine gift to forgive and forget all evils against me and that in all instances of my life you are with me. I want in this short prayer to thank you for all things and to confirm once again that I never want to be separated from you ever in spite of all material illusions, I wish to be with you in eternal glory. Thank you for your mercy towards me and mine. Say for 3 consecutive days after which the favor requested will be granted even if it appears difficult. This prayer must be published immediately. Thank you Holy Spirit. L.C. wm2

NOVENA TO ST. JUDE Oh Holy St. Jude, Apostle & Martyr, great in virtue and rich in miracles, near kinsman of Jesus Christ, faithful and intercessor of all who invoke your special patronage in time of need, to you I have recourse from the depths of my heart and humbly beg to whom God has given such great power to come to my assistance. Help me in my present and urgent petition, in return I promise to make your name known and cause to be invoked. **St. Jude, pray for us all who invoke your aid. Amen. Say 3 Our Fathers, 3 Hail Mary's, 3 Gloria's. Say for 9 consecutive days. Publication must be promised. This novena has never been known to fail. Thank you for answering my prayers. J.S. hml**

Personal

NOVENA TO ST. JUDE Oh Holy St. Jude, Apostle & Martyr, great in virtue and rich in miracles, near kinsman of Jesus Christ, faithful mediator and intercessor of all who invoke your special patronage in time of need, to you I have recourse from the depths of my heart and humbly beg to whom God has given such great power, to come to my assistance. Help me in my present and urgent petition. In return, I promise to make your name known and cause you to be invoked. **St. Jude, Pray for us all who invoke your aid. Amen. Say 3 Our Fathers, 3 Hail Marys, 3 Gloria's. Say for 9 consecutive days. Publication must be promised. This novena has never been known to fail. Thank you for answering my prayers. R.P.M. gcm2**

NOVENA TO ST. JUDE Oh Holy St. Jude, Apostle & Martyr, great in virtue & rich in miracles, near kinsman of Jesus Christ, faithful & intercessor or all who invoke your special patronage in time of need, to you I have recourse from the depths of my heart & humbly beg to whom God has given such great power to come to my assistance. Help me in my present and urgent petition, in return I promise to make your name known and cause to be invoked. **St. Jude, pray for us all who invoke your aid. Amen. Say 3 Our Fathers, 3 Hail Marys, 3 Gloria's. Say for 9 consecutive days. This Novena has never been known to fail. Thank you for answering my prayers. C.D. hm2**

GENTLE BEGINNINGS had its first gathering on Feb. 14 and while we were expecting 35 people, 100 attended. We are a new social club for unmarried people with a growing membership of decent, intelligent adults who wish to find new friends and form new relationships gently. It's not a dating service because we always meet in large or small groups. No one in the group is a date and each person pays their own way. This way gentlemen can go out with 3 or more ladies and the financial burden is not on him--and women like it because they have no feeling of obligation. This leaves everyone free to get to know one another and each has a free choice as to which people they choose to cultivate as close friends. We have socials, sports, classes, workshops, and travel. Write for our literature to Gentle Beginnings, 821 Franklin Avenue Garden City, NY 11530 or call 516 746-2724. Never any obligation or pressure. We are truly gentle. You'll see. Shonsaya Owen, Director. gcm4

GRANDPARENTS-Send in your grandchildren's photos and enter our "World's Most Beautiful Grandchildren" contest. See the Notice column in the Classified Section for more information or call 931-0012.

P.O. Receives Outstanding Award



Roger Nienaber, Hicksville Manager/Postmaster proudly accepts the Combined Federal Campaign Outstanding Performance Award from John Donohue, Associate Campaign Director for United Way of Long Island. The 1900 employees of Hicksville Post Office contributed over \$66,000 to the 1984-85 CFC Drive.

Roger Nienaber, Hicksville Manager/Postmaster, was presented with an Outstanding Performance Award from the Combined Federal Campaign.

In presenting the award, John Donohue, Associate Campaign Director for the United Way said, "Hicksville Post Office outdoes itself each year in providing support for the agencies funded through the Combined Federal Campaign. This year the 1900 Hicksville postal employees raised over \$66,000 or an average of almost \$35 in yearly contribution from each employee. Throughout Nassau and Suffolk, postal employees contributed over \$262,000 of the \$522,000 raised in the 1984-85 Combined Federal Campaign Drive. We and all of the Long Island Service Agencies thank the Postal Service for their generous support."

Mr. Nienaber said, "I was thrilled to accept the award on behalf of our employees. Being new to Long Island I am happy to

be a part of such a worthy drive. My predecessor, Anthony Murello who recently retired in January, deserves special credit since he was in charge when this year's fund drive was conducted. I consider myself lucky to be assigned to an area with such concerned and generous employees and I am looking forward to an even more successful campaign for 85-86."

In Service

Petty Officer 3rd Class Neale J. Buck, III has returned from 7 months deployment in the Mediterranean. He is assigned to the USS Hermitage LSD 34. They had been at sea since July 25, 1984 with 9 other ships making up the Mediterranean Amphibious Ready Group.

While there, they visited ports in Spain, France, Italy, Turkey, Tunisia and Morocco. They participated in various NATO exercises with these countries.

While on the cruise Petty Officer Buck was named Sailor of the Quarter.

Two Receive Nurse Scholarships

Two students seeking bachelor's degrees in nursing at Adelphi University in Garden City, are the recipients of scholarship awards from the Nurses Association of the Counties of Long Island, Inc., it was announced by Ruth W. Harper, executive director. Both registered, professional nurses, the two winners were selected on the basis of their academic standing and dedication to the nursing profession.

The awardees are Ginny L. Cohen of Jericho, a graduate of Queensborough Community College and Kathleen A. Erickson of Levittown, who graduated Alfred State College. The money they received will be used toward funding their Adelphi studies.

According to Mrs. Harper, the Nurses Association is an organization of registered, professional nurses in Brooklyn, Queens, Nassau and Suffolk.

Sheila Gettelson of Lido Beach, professor of nursing at Adelphi University, is Nurses Association president.

The chairman of the Association's Scholarship Committee is Mary Lou Dorsett of Smithtown, and a team leader, Pilgrim Psychiatric Center, West Brentwood.

Advertisement for 'Welcome Wagon' featuring a large question mark and the text: 'NEED TO KNOW SOMETHING ABOUT YOUR NEW COMMUNITY? Call WA 1-1082. Our hosts will bring gifts and greetings, along with helpful community information.'

GET RID OF ALL YOUR INSURANCE POLICIES. NOW ONE PCP POLICY



CAN COVER YOUR HOME, AUTO, PERSONAL BELONGINGS, ADDITIONAL RESIDENCES, UMBRELLA LIABILITY AND MORE...

COMPARE

STANDARD HOME & AUTO POLICIES TO PERSONAL COMPREHENSIVE PROTECTION

	Standard Home & Auto Insurance	PCP
Auto Liability	✓	✓
Auto Loss of Use Due to Collision	Option	✓
Auto Towing & Labor	Option	✓
Dwelling	✓	✓
Replacement Cost on Personal Property	Option	✓
Theft of Personal Property from Unlocked Auto	Option	✓
Bank Cash Machine Card	Not Available	✓
Safe Deposit Box Coverage	Option	✓
Renewal Guarantee	Not Available	✓

PCP GIVES YOU MORE PROTECTION FOR YOUR INSURANCE DOLLAR — THAN BOTH POLICIES COMBINED!!

Montana Agency, Inc.

Charles I. Montana Jr. Kenneth Walker
George D. Montana Barbara Abbondandolo
William M. Heberer Jr. William J. Ramsey Jr.

115 N. BROADWAY, HICKSVILLE, N.Y.

Call Now for FREE Quotation

938-3600



Representing:
Continental Insurance
80 Maiden Lane,
New York, N.Y. 10038



Second graders in Mrs. Weber's and Mrs. Kuperberg's gym class at Fork Lane School, led by Tracy Koetter, center, prepare to play "Pillow Polo". The game is a favorite of the youngsters and is a unique approach to developing hockey skills. The hockey sticks are padded for additional safety.



Non-stop action as students await ball.

NAUTILUS long island



Athletic Training Centers For Men & Women
We Are Physical Fitness

50 Clinton St., Hempstead
Hempstead Plaza Complex

NAUTILUS/LONG ISLAND is the island's oldest and largest Nautilus center by far. 2 full circuits, 26 machines, 39 stations in all! Plus out of circuit equipment. Nobody else is even close!

Personalized & Supervised Training
Serious Athletes & Fitness Enthusiasts
Choose the Only Serious Fitness Center

We offer the ultimate in training for strength, flexibility, cardiovascular conditioning, weight loss or gain, and the prevention of athletic injuries.

NAUTILUS/LONG ISLAND...Number 1
and planning to stay that way!

Come In Or Call Us At: **483-7555**