

Hicksville-Jericho Rotary Has January Meeting

Guest Editor—Michael Racicot

A good start to 1987 was the on-time opening of our meeting by President Rocco starting at exactly 12:15. The bulletin, on the other hand, was started at 12:25.

GUESTS:

The honorable Joe Trebitz introduced our guests:

Rotarian Dr. Frank X. Biondo—Bayville Center Club, and his guest Prospective new member Dr. Peter M. Blauzvern—General Dentistry 366 North Broadway, Jericho, New York 11753

John Anderson, respected guest of Elie. **HAPPY DOLLARS:**

1. To Inga—Leo is still paying those monthly installments

2. Congratulations to J. Grossman—In business 10 years with his partner

3. Al Levine—At 12:01 p.m. on January 9, 1987, he became sole owner of his business, finally.

4. Squat—officially retired again this year.

5. Leo received his first social security check this month; I guess Inga is set for life!

6. For our guests

7. For the New York Giants

7A. For the New York Little People

8. By Augie—one special dollar for our latest successful surgery and the Gift of Life Program. A two year old boy doing well, a great job, a ? donation.

CHRISTMAS BASKETS:

Squat provided \$1400.00 worth of Christmas dinners to many Hicksville area families. Our warmest thanks to our own Santa.

SENIOR CITIZENS PROGRAM:

A letter from their president thanked us for providing their weekly buses.

ANNIVERSARIES:

Jim Grossman and Ann Dee 2 years

Lou and Fannie Cesta

Joe and Eileen Trebitz

Guest song leader—Champaigne Dr. X

PROGRAM:

The Annual **GROSS** Film Festival

This year featured that renowned award-winner "Restless Natives." A Terrific slide show by our own Dr. Irwin Gross. Great job! President Pete reminded us that he has now served as or exalted leader for six months, half of his elected term. Does this mean that he is our...

COMING EVENTS:

February 10, Thursday—Club Assembly, visit by District Governor.

May 7, Thursday—Spring Fling.

Arena Theatre Workshop Registers For Spring

Arena Players Repertory Company is now holding registration for the Spring 1987 semester of its Professional Performing Arts Institute. Classes offered are Creative Dramatics for Children (ages 7 to 12), Teen Acting I, II, III, Adult Acting I, II, III, and advanced classes in Directing and Playwriting.

The professional staff of instructors, the majority of whom hold Masters Degrees in Theatre Arts, include Frederic De Feis, Joseph Lizardi, Barbara Meridith and, Jeff Romano.

Classes will begin Feb. 10, and will run for ten weeks, costs range from \$100. to \$210. per class. For information and a brochure, phone 516-293-0674.

New Library Cards

Beginning January 1, 1987, library cards will be issued for a 5 year period replacing permanent registration. Many of our registrations are no longer valid and in order to protect public property and give better and faster service we must bring our files up to date. Cards issued after January 1, 1987 must be renewed after 5 years. Cards currently in use will be reissued to conform with the new policy. There will be no suspension of borrowing privileges.

Mid-Island Herald

Vol. 37 No. 34

Friday, January 23, 1987

* ANTON COMMUNITY NEWSPAPERS OF LONG ISLAND
All Rights Reserved. Circulation Office Phone 747-8282

Parola Asserts L. I. Priorities In Response To State of State Message

State Sen. Dunne Appointed Deputy Majority Leader

Senate Majority Leader Warren Anderson has announced the appointment of Nassau Republican State Senator John R. Dunne as Deputy Majority Leader. In the capacity of Deputy Majority Leader, Dunne, ranking member of Long Island's legislative delegation, will be an outspoken advocate for suburban interests.

"I am thrilled to have this opportunity, and honored that Senator Anderson has chosen me to work closely with him in shaping the Legislative agenda and priorities for New York State," the veteran lawmaker stated.

"Equally important," continued Dunne, "is that I will be able to even more effectively champion the very special local causes which my constituents in the Sixth Senatorial District have told me are important to them."

Dunne has long been noted for his ability to obtain special state funding for senior citizens, school districts, day care, youth athletic and counseling programs and other civic undertakings on behalf of his constituents. He has been a consistent supporter of organizations such as United Jewish Ys of Long Island, Four Our Children and Us (FOCUS), RELI REACT, of the Long Island Philharmonic, and the Nassau County Air & Space Museum.

Dunne's appointment as



Deputy Majority Leader caps a varied and distinguished legislative career which has seen him gain national recognition and acclaim as a state legislator. He has frequently been called upon to draft New York's legislative response to a particularly sensitive and critical issue, and has authored landmark legislation in such diverse areas as

crime and corrections, automobile liability insurance, consumer protection, environmental protection and court reform.

As Deputy Majority Leader, in addition to acting as Majority Leader Anderson's chief deputy, Dunne will be responsible for presenting Republican positions and leading floor debate in the Senate.

Assemblyman Fred Parola (R-C, Wantagh) has assessed Long Island's priorities in response to the governor's recent State of the State Message.

The lawmaker asserted that while tax cuts proposed by the governor to return the federal tax reform windfall are necessary and welcomed, they do not go far enough.

"While the governor finally has offered a concrete proposal to return these monies, the problem is that he continues to underestimate the size of the windfall," Parola said. "I will work with my colleagues in the state Senate and Assembly to see that the legislation eventually enacted returns every windfall tax dollar to state taxpayers."

Parola estimated the true windfall at \$2.4 billion, rather than the \$1.7 billion the governor predicts.

In addition, Parola hailed the governor's intentions to make education the top priority of 1987, but cautioned, however, that any efforts to improve local public schools around the state must be done equitably.

"We must be vigilant in guarding against any attempts to fund school increases at the expense of Long Island suburban public schools," he said.

Parola also said he supports the continued election of judges as is currently practiced in New York State. He stressed that he opposed any legislation that would allow judges to be appointed.

Lastly, Parola stated that he will maintain his support for a constitutionally accepted death penalty. Life without parole would never replace the deterrent that capital punishment would afford the residents of the state, he said.

1987 Girl Scout Cookie Sale Begins

Judy Wasilchuk, Cookie Chairman for Bay Girl Scout Association, has announced the 1987 Girl Scout Cookie Sale begins on Friday, January 10, at 3:00 p.m. when girls start taking orders from friends and neighbors.

"When you buy Girl Scout Cookies," Judy Wasilchuk said, "you are getting more than great cookies. You are investing in the future by helping to finance positive activities for girls, locally and throughout Nassau County, as they move ahead on individual roads to maturity."

Through Girl Scouting, girls from 5 to 17 learn to meet the challenges of a changing world by participating in informal educational programs designed to develop values, skills and self-confidence; under the guidance of trained adult volunteers. Today's Girl Scout program includes contemporary issues such as personal safety, physical fitness, careers, drugs and alcohol, as well as the traditional service and outdoor activities. While learning and growing, Girl Scouts also have fun together.

The selling price of the cookies remains the same as last year, 12.00 per box. The assortment includes the old favorites: Thin Mints, Do-Si-Dos, Samoas, Tagalongs, Chocolate Chunk, Pecan Shorties and Trefoils. Girl Scout cookies offer treats for all tastes.

Girl Scouts across the country are observing their 75th Anniversary in 1987. Local Girl Scouts will be celebrating in many ways throughout the year.



WITH HIS WIFE, BETSY, HOLDING the bible, Thomas S. Gulotta takes the oath of office as Nassau County Executive. Administering the oath is his father, retired Supreme Court Justice Frank Gulotta. On hand to see their father become the sixth County Executive in the history of Nassau County are the Gulotta children, (from left) Christopher 9, Elizabeth 7, and Thomas 12.

CELEBRATE THE GRAND OPENING OF "THE GREEN POINT'S" HICKSVILLE OFFICE

GRAND OPENING
BANKING HOURS
MONDAY-FRIDAY
9:00 a.m. - 7:00 p.m.
SATURDAY
10:00 a.m. - 6:00 p.m.

PICK YOUR RATE

60-MONTH TIME DEPOSIT 7.95% Effective Annual Yield 7.45% Current Annual Rate Minimum Deposit: \$5,000	30-MONTH TIME DEPOSIT 7.22% Effective Annual Yield 6.67% Current Annual Rate Minimum Deposit: \$5,000	12-MONTH TIME DEPOSIT 7.28% Effective Annual Yield 6.53% Current Annual Rate Minimum Deposit: \$5,000	6-MONTH TIME DEPOSIT 6.36% Effective Annual Yield 5.92% Current Annual Rate Minimum Deposit: \$5,000	MONEY MARKET OR SUPER G PASSBOOK 6.00% Effective Annual Yield 5.83% Current Annual Rate Money Market (\$2,500 min.) Super G (\$5,000 min.)
---	---	---	--	---

PICK YOUR BONUS

YOU DEPOSIT	YOU RECEIVE			
AMOUNT	60-MONTH (1% BONUS)	30-MONTH (1% BONUS)	12-MONTH (1% BONUS)	6-MONTH (1% BONUS)
\$100,000	\$1,000.00	\$750.00	\$500.00	\$250.00*
75,000	750.00	562.50	375.00	187.50
50,000	500.00	375.00	250.00	125.00
25,000	250.00	187.50	125.00	62.50
10,000	100.00	75.00	50.00	25.00
5,000**	50.00	37.50	25.00	12.50
2,000 (IRA only)	20.00	15.00	10.00	—

*Maximum bonus on 6-Month accounts is \$250. **Minimum deposit for bonus is \$5,000 (\$2,000 for IRAs and Qualified Plans in a TD of 12 months or longer).

SPECIAL IRA BONUS RATES PAY .25% MORE THAN REGULAR RATES

IRA TIME DEPOSIT	EFFECTIVE ANNUAL YIELD	CURRENT ANNUAL RATE
60-Month	8.22%	7.70%
12-Month	7.55%	6.78%

These higher rates and bonuses are also available for IRA Successor Trustee Transfers and Qualified Defined Contribution Plans for the self-employed (Unincorporated).

Bonus will be added to account on day of deposit as interest. Effective annual yield for Time Deposits and IRA Time Deposits includes cash bonus amortized over term of account and assumes bonus, principal and interest remain on deposit a full year; however, the six-month annual rate is subject to change at renewal. Interest is compounded daily on all accounts and is credited quarterly on Time Deposits and Super G Passbook; monthly on Money Market, NOW and Super NOW accounts.

Bonus may be withdrawn by the depositor at any time if the initial deposit was made with cash (or with a check that has subsequently cleared, provided signature identification has been received). For IRAs, withdrawals cannot (in most cases) be made prior to age 59½ without incurring a substantial penalty. In addition, if premature withdrawal

from any Time Deposit is permitted by the Bank, a substantial penalty and return of the cash bonus are required.

Minimum deposit in a Money Market, Super G Passbook, NOW or Super NOW account must remain on deposit for a period of 30 days in consideration of gift received. Only one gift or cash bonus per account. Warranties, expressed or implied, are the responsibility of the manufacturer.

The Bank reserves the right to change or discontinue this offer at any time without prior notice. Complete details available on all accounts. Offer good at Hicksville Office only. Transfers of accounts from other offices of "The Green Point" are not eligible for bonuses or gifts.

All accounts must be opened in person — no mail.

SPECIAL GIFTS For Money Market, Super G Passbook, NOW and Super NOW accounts.

YOU DEPOSIT	YOU RECEIVE
\$10,000 or more	\$20 cash
\$5,000-\$9,999	\$10 cash

Deposit \$2,500 to \$4,999 and you receive a Solar-Powered Calculator (Super G Passbook not eligible).

"The
Earnings
Bank"



The Green Point
Savings Bank

Chartered 1868

Member FDIC



Mortgage
Money
Available

190 BROADWAY (ROUTE 107) AT OLD COUNTRY ROAD, HICKSVILLE (516) 938-4000

The bank is not responsible for typographical errors.

Rates subject to change without notice.

A Letter from Lulabelle...

Here's a quiz for you—do you know what these words mean? Kay Kaiser's College of Musical Knowledge...the Inner Sanctum...the First Nighter...Free dishes tonight...Kirkman soap...fiesta ware...mellowrolls...dots...stooop tag...Nassau Daily Review...Scott's Emulsion...mustard plaster...ah, ha, so you do!!!...now we know you're older than you look! Kay Kaiser's College of Musical Knowledge was a wonderful radio program starring our favorite singer, Ginny Simms, and it introduced and popularized many songs of the day—a long ago day, (remember "Mairzy doats and doazy doats?")...the Inner Sanctum was a "scary" mystery series on radio which was introduced by a very squeaky door...and the First Nighter was a drama program with "the first-nighters are hurrying down the aisle and it featured one or the other of the Ameches...it's amazing how we could picture the whole story with no video...Free dishes tonight" was the sign on the movie marquee as it promoted a double feature, the newsreel, and the dishes—we went every week so that we could complete our set...Kirkman soap was a large rectangular bar of strongly smelling laundry soap and the worst threat to children using naughty words was "do you want your mouth washed out with Kirkman soap?...fiesta ware was a kind of dishes that had many colors—agua, yellow, green, and wine and it was proper to use all mixed colors at each place setting—and they are now collectors items...mellowrolls were ice cream treats similar to a Good Humor but not on a stick and they were cylindrical in shape—and, as I remember, they were better than anything nowadays...Dots, which may still exist, were chewy gelatine-type candies in many colors—the black was popular but I hated them...stooop tag was a game, like regular tag, except that if you squatted down, or "stoooped" you were safe and could not be tagged...Nassau Daily Review was the most important daily newspaper of its day, published by James Stiles in Rockville Centre...Scott's Emulsion was a really revolting creamy white liquid which our mothers gave us daily to supplement our diets and because we were so thin (this was before vitamin tablets) Come to think of it, it probably settled in all the wrong places and is causing the cellulite problems today!!...and a mustard plaster—heaven help you if you had bronchitis or pneumonia before wonder drugs—you were slapped with this cold wet mixture of mustard, water, and flour which was spread between two rags and then spread on your chest where it became very hot and "baked the infection out"—and also burned your skin like a sunburn...and so that's the vocabulary lesson from long ago—some I miss and some I'm glad to miss!

Yours, Lulabelle

Let Us Tell Your Story

We are here to tell your neighbors all about what you're doing—your clubs, your churches and temples, your schools, your honors, your fire department, your police news, your special community events—in fact, anything and everything that's happening in your town.

Send us your news—send lots of news—that's what community newspapers are all about—the local happenings—so get busy—let us know—send it to 132 East Second Street, Mineola, 11501

and if you need any help in writing it up, call 747-8282 or write to us for our free booklet on Tips for Submitting News Stories.

but you don't have to be a professional writer—just write it out, give us a phone number so we can call back if we need more information...

and see your news in your community newspaper!

FREE
AIR CONDITIONING
On All Sentra*, 200SX, Stanza
and Pathfinder XE models
In Stock - Offer Expires 1/31/87
*Excluding Standard Models



Don't worry if you didn't take the 1986 tax advantage—Our Free Air Conditioning offer saves you even more!

OYSTER BAY NISSAN



NISSAN LONG ISLAND'S OLDEST
NISSAN DEALER
67 WEST MAIN ST., OYSTER BAY
628-3800

Generation At Risk

A PBS documentary on the major problems affecting teenagers today - drug and alcohol abuse, pregnancy, suicide and dropping out of school - and what some communities across the U.S. are doing to help, will air January 28 at 8 p.m. on WLIV/Channel 21.

The Long Island Report segments will feature one topic per night. Reporters in the field will focus on the extent of the problems on Long Island, and their reports will be followed by a discussion with some of the top experts in the field. During the broadcasts, the station will highlight telephone numbers where teens and their families can call for help.

The Long Island Report schedule is as follows:

Monday, January 26 - Drug Abuse

Tuesday, January 27 - Alcohol Abuse

Wednesday, January 28 - Pregnancy

Thursday, January 29 - Dropouts

Friday, January 30 - Suicide

"I urge each and every one of you to think hard about the consequences of doing nothing..."

First Lady Nancy Reagan
Generation at Risk

Mercy League Plans Trip

On Wednesday, February 4, 1987, the Glen Cove, Hicksville, Syosset League of Mercy Hospital is planning a trip to New York City to see the play, "Social Security". The day will begin when you board the buses at 9 A.M. behind the Sears Automotive in Hicksville. When the buses arrive in New York City, Actors will board the buses and conduct a tour of Schubert's Alley. Lunch will be served at Marvin's Restaurant, between 42nd and 43rd at 9th Avenue across from the Actors Residence. After lunch, it's on to see the play, "Social Security" at 2 P.M. The buses should return about 3:30 to the Sears location. The price for the days outing is \$55.00 which includes everything, even lunch. For reservations call Mimi at 433-8781.

Jericho Bulletin Board

By FRAN GREENE

Friday, January 23

Jericho Cultural Arts Advisory Board Meeting, 9:00 a.m.

Saturday, January 24

Mid Island Y Presents the Film "A BRIEF HISTORY OF MAMMALS" (A LETTER TO MAMA), 8:30 p.m. Admission \$3.00 for Y members and \$4.00 for non-members. For further information call the Y at 822-3535.

Temple Beth Torah Monthly Bowling, at Westbury Bowl.

Monday, January 26

Jericho Junior High School Guidance evening office hours, 7:00-9:00 p.m. Please call for an appointment.

Tuesday, January 27

Jericho Public Library Pre-Schoolers Movie, 10:30 a.m. "Mole as a Painter" & "Madeline." Jericho Senior High School Guidance evening office hours, 7:00 - 9:00 p.m.

Jericho Meditation Program, 8:00 p.m. in the Siddha Meditation Center, for further information call, 433-7935.

Town of Oyster Bay Board Meeting, 10:00 a.m. in the Hearing Room of the East Wing, Audrey Avenue, Oyster Bay.

Wednesday, January 28

Temple Beth Torah Adult Education, 7:30 p.m. The "SIDUR" ALL WELCOME.

Thursday, January 29

Jericho Board of Education Meeting, 8:15 p.m. in the senior high school teachers' cafe. All meetings are open to the community.

Advertisers please note our schedule of special sections for the next six months:

BRIDAL

JANUARY 29

GREAT

ESCAPES

FEBRUARY 5
OUR TRAVEL & LEISURE ISSUE

HEALTH &

FITNESS

FEBRUARY 19

CAMP &

SCHOOL

MARCH 5

BRIDAL

MARCH 12

SPRING

FASHION

MARCH 26

SALUTE TO

BUSINESS

APRIL 9

HOUSES &

GARDENS

APRIL 23 & MAY 21

MOM'S DAY

APRIL 30

DADS &

GRADS

JUNE 11

LIFESTYLES

JUNE 25

For More Information Call
Anton Community
Newspapers
of Long Island
(516) 747-8282

*Space Reservations
Are 8 Days Prior To The
Publication Date

Copy Deadlines
Are 6 Days Prior To The
Publication Name.

Passports Available Select Post Offices

"As a Federal agency, the Postal Service provides a number of services for other government agencies. One such service is Passport Application Acceptance, which is performed for the U.S. Department of State," said Roger Nie-naber, Hicksville Division General Manager/Postmaster.

Nassau County residents may obtain a passport application from the following area post offices: Hicksville, Mineola, Freeport, Garden City, Glen Cove, Hempstead, East Meadow (main branch), Long Beach, Oceanside, Rockville Centre, Roslyn and Valley Stream.

U.S. passport applications may be obtained in person or mail when requested by telephone from the designated post office. Applicants complete the forms according to instructions printed on them, and return them in person to acceptance employees for review and processing. The passport fee for a first-time applicant is \$42.00 if you are 18 years old or over, or \$27.00 if you are under 18 years of age. Proof of U.S. citizenship, proof of identity, two recent photographs (2"x2") is required.

First-time passport applicants must appear in person to establish identity. Passport renewals can be obtained by mail for a \$35.00 fee. Applications can be obtained by calling your passport post office.

Generally, passports are received within three weeks from the date of filing. If an emergency exists, there are special provisions for obtaining a passport. In these cases, contact your post office or passport agency for details. Hicksville Post Office, 185 West John Street processes passports from 10:00 a.m. to 3:00 p.m. Monday to Friday and 12:00 p.m. to 1:00 p.m. on Saturday.



Fourth and fifth graders at Village School in Syosset have assumed leadership roles as members of the Safety Patrol. (The sixth graders are now at the South Wood Middle School). According to faculty advisor Don Parkes, the group is as able and dedicated as any sixth grader and he is very proud of them.

Shown are: Front row (left to right) Patrick Moran, Daniel Moran, Jeffrey Orlowski, Bradley Morrison, Steven Carter, Timothy Gilroy. Back row (left to right) Michael Peregrine, Carmine Tiso, Raymond Correa, Christopher Kriminos, Michael Nicuhr.

News From The Galileo Lodge

JOE GIORDANO'S MESSAGE: *Our purpose in life is simply to help on the purpose of the universe.*

—George Bernard Shaw

If you have achieved success, and if it has been a part of your life, then you cannot settle for anything less because there such a thing as being success-orientated. Individuals as well as organizations fall into this category. Well, the Galileo Lodge, as an organization, dotes on success. Needless to mention here that the Galileo Lodge is certainly accustomed to presenting successful affairs and activities, so once again it announces that a St. Valentine's Day Dance will be held in early February. Tickets will sell at \$14.00 per person, and in the offering will be a delicious hot dinner with all the trimmings, beer, soda, coffee and cake, set-ups and music for your listening and dancing pleasure.

St. Valentine's Day is very special to the Galileo Lodge because it is associated with love and romance, and it would like to see its members, friends and patrons enjoy themselves in a beautiful and charming atmosphere of love. So why not attend this St. Valentine's Day a very special occasion for all of you. Please note that a "bring-your-own-liquor-policy" will be in effect that night, and that in next week's column we will announce the committee people for this special dance.

Now that the new year of 1987 is starting to settle in, it's time for the nominations of new officers of the Galileo Lodge. This is a yearly activity at our Lodge and a very important one, of course. The Nominating Committee, under the direction of Dom. Valente, has been laboring earnestly in its desire to present the best slate of officers possible to the membership on Thursday, the 15th of January. There's an old saying to the effect that a general is only as good as his soldiers, well, if we use that analogy here, it goes without saying that an organization can only be as good as its members. This new slate of officers are chosen for obvious reasons, loyalty and devotion among them, and for their desire to guide the destiny of the Galileo Lodge in 1987, thru "thick and thin" and thru all kinds of adversities. Officers can either "make" or "break" an organization, but the Galileo Lodge, in this respect, has been quite lucky. Also, for the new officers, it's a matter of time and effort, and these two requisites represent what an officer is or is not. Our congratulations to the newly-chosen slate of officers and

also to those who may be nominated from the floor.

And mentioning the new year of 1987 and what it means to the members, friends and patrons of the Galileo Lodge—well, it means good times, fun, relaxation, enjoyment, pleasure, and if I have left anything out here, I have done it inadvertently. The new year also means a new recreational and social program, with many affairs, activities, dances and parties for all those associated with the Galileo Lodge. The Galileo Lodge is a firm believer in the old axiom that all work and no play makes "Johnny" a dull boy. So keep attuned to this column and discover what the Galileo Lodge has in store for you for the new year, recreationally as well as socially. And that other old but important axiom, which is to offer you the most for the least amount of money is still deeply-rooted in the organizational makeup of the Galileo Lodge.

Help is still needed for the Galileo Lodge's Bingo Sessions. Joseph Lorenzo, Historian, 931-5966.



Emma Cambria from the Syosset-Woodbury Club and Lena Varricchio from the Syosset Gardens Club had a five day mini-vacation at Pine Springs, in Freehold, NY where they won the shuffle board contest. They both received trophies.



DOING THE LIGHT GASTRONOMIC...Fund raising, often very hard work, has its lighter moments, too! Here members of the Children's Medical Fund of New York, which has raised over \$10 million for Schneider Children's Hospital of Long Island Jewish Medical Center, relax between courses at the annual Board of Trustees dinner meeting. Shown above (l to r) are Harvey, a Trustee, and Adrienne Gossett of Brookville; Valerie and Bernard Levy, Trustees, of Brookville; Brenda Cooperman of Brookville; and Roy Bisnoff of Jericho.

The Princeton Review Presents

S.A.T. PREP

With a cast of superstar teachers

"As a high school junior, I'd like to think I would have organized a boycott of the S.A.T.'s. But it's probably more accurate to say I would have picked up the phone and dialed the Princeton Review."

—The Nation

"A random sampling by Venture of 100 New York City students coached by the Princeton Review last year revealed an average improvement of 154 points."

Venture Magazine

"But the race for the Ivy League schools is just one factor behind the Princeton Review's success. Probably more important is a witty and irreverent approach that turns a grim ritual almost into a game."

—Christian Science Monitor

"If I were a high school student in a city where a school like the Princeton Review was not available... I would be terribly upset."

Bulldog Book

NASSAU

MERRICK
CONGREGATION OHAV SHOLOM
Phone 935-2999
WOODMERE
WOODMERE ACADEMY
Phone 935-2999
GREENVALE
C. W. POST COLLEGE
Phone 935-2999
GREAT NECK
TEMPLE BETH-EL
Phone 935-2999

SUFFOLK

BRENTWOOD
SUFFOLK COMMUNITY COLLEGE
Phone 935-2999
SELDEN
SUFFOLK COMMUNITY COLLEGE
Phone 935-2999

PG-16 Your parents will be notified if you take this course

Starts next month at a location near you.

New Courses At The "Y"

SCULPTIN: Figure Modeling in Clay #3002-5414
10 Sessions 7:30-10:30 p.m. M \$190 NM \$240+ \$5
NOTE: 1st Class - January 26
Instructor: Angelo Bona
Discover the art of expressing one's self in clay. For beginners or advanced students, individual attention given. Patina and mounting will be taught and clay will be supplied. Nominal model's fee will be charged.

MYTHS & REALITIES OF PERSONAL ADS

2 Sessions 7:30-9 p.m. M \$12 NM \$18 + \$1
NOTE DATES: January 26 and February 2
Instructor: Gran Greene ASCW.

Learn how this exciting way of meeting dates/mates can work for you! In March '85, New York magazine published a cover story regarding this latest rage. You will leave this two session workshop knowing: The history of personal ads, What to expect, How to write, place, respond to, and screen.

SCULPTING: Figure Modeling in Clay #3003-5491
10 Sessions 10-1 p.m. M \$190 NM \$240 + \$5
NOTE: 1st Class - January 27

Instructor: Angelo Bona
Class description same as 7:30 class above.

THE NEW TAX LAWS

2 Sessions 8 p.m. M \$5 NM \$7.50 + \$1
NOTE DATES: January 21 and 28

The new tax law will not only affect your tax bill, but also the ways in which you should invest. This course will review what the new tax law will mean to you, your family and your business.

GREAT CHEFS

#3004-5644
1 Session January 21 8-10 p.m. M \$10 NM \$15 + \$1
First in a series of demos by well-known local chefs. Chef LARRY GOCHMAN of ASPARAGII, will demonstrate how you can impress your friends and family with new and exciting dishes.

HINTS FROM HEIDI

#3002-5454
1 Session February 9 7:30-9 p.m. M \$3.50 NM \$4.50 + \$1
Do you have a case of terminal clutter? Come, have fun and straighten yourself out!

NOTE: Pre-registration required.

For further information please call: Marcia Smoller at 822-3535.

Volunteer Program At Old Westbury Gardens

Old Westbury Gardens is seeking new volunteers for the 1987 season to act as docents (tour guides), receptionists, clerical and curatorial assistants, gardeners, and sales clerks in the gift shop. An eight-week training program, required for all new volunteers, will run

concurrently on Tuesdays and Saturdays, beginning February 14, 1987. The sessions, held from 9:00 AM to 12:00 Noon, consist of lectures and workshops on architecture, art history, horticulture, landscape design, gardening and visitor services - all taught by

the Old Westbury Gardens staff. Prior to the training sessions, an interview with each new volunteer will be held with the Volunteer Coordinator to discuss the program in detail.

Following the training program, each volunteer will be asked to contribute four hours per week during the months of May through October. No experience is necessary for the program; everyone is welcome to join - from students to retired persons!

Non-profit organizations rely heavily upon the services of volunteers to remain economically sound and yet still perform all the functions necessary to maintain Old Westbury Gardens as always a very special place to visit. During 1986, 140 individuals contributed 15,000 hours which is equi-

valent to a savings in labor costs of \$100,000! Those interested in joining this industrious volunteer corps should call (516) 333-0048 for an application and information.

OLD WESTBURY GARDENS is listed on The National Register of Historic Places and is the former country estate of John and Margarita Phipps. It has been open to the public since 1959 as a horticultural garden and museum. Preserving and interpreting the house and gardens has been Old Westbury Gardens' expressed goal.

This historic site is located on Old Westbury Road between Jericho Turnpike and the Long Island Expressway. Remember, for further information, call (516) 333-0048.

Your Daily Diet Can Help Your Health

Heart disease, high blood pressure, even cancer are some of the health problems a person may avoid simply by eating a sensible diet. Yet most people don't know much more about "eating right" than they learned in their grade school health class. People are confused about nutrition. The messages are conflicting. Where can you go to learn how to sort the facts from the fads? The Red Cross can help. The American Red Cross, in conjunction with the U.S. Department of Agriculture, has spent four years devising and testing an adult-level course to teach people how to eat properly and prevent many common health problems. The new course, "Better Eating for Better Health", begins on January 15, 1987 from 9 A.M. to 12 noon, (material fee, \$15.00) and runs for 4 consecutive weeks at the American Red Cross Chapter House, 264

Old Country Rd., Mineola, N.Y.

"Today's fitness boom and health consciousness has made people more aware of the importance of good nutrition," explains Mrs. DelCastillo, R.N., the local Red Cross chapter's Nutrition Instructor. "This new course gives people much more information about the connection between diet and such diseases as high blood pressure, heart disease, and certain forms of cancer. The classes pack in quite a lot of real practical information and advice about how to control weight, how to reduce fat, sodium, and sugar in one's diet; and how to de-code food labels. Yet the classes keep things practical, so even busy people can still start eating right."

For more details, or to register for the course, contact the Red Cross at 747-3500 extension 227.

At The Plainview Library



On THURSDAY, JANUARY 22 at 8pm, the Plainview-Old Bethpage Library will take you on two separate adventures.

From Kenya to Washington D.C. is a sight and sound slide presentation. The show on Kenya is a photographic safari through the game parks of Kenya.

Our capital city is a visual tour of the landmarks of Washington D.C. both day and night.

Nelson Burack will be our tour guide. He has won many awards for his photographic expertise.

On WEDNESDAY, JANUARY 28, at 7:30pm, the Plainview-Old Bethpage Library will be holding a BOARD OF TRUSTEES MEETING in the staff room. The public is invited.

On THURSDAY, JANUARY 29 at 3pm and 8pm, the Plainview-Old Bethpage Library will present the feature film A SUNDAY IN THE COUNTRY starring Louis Ducreux, Sabine Azema and Michel Aumont.

Director Tavernier recreates an afternoon at the home of Monsieur Ladamiral, an elderly artist of wide renown. Set in turn-of-the-century France, this thoughtful film reveals the conflicts that occur when Ladamiral's children and grandchildren visit for the day. A SUNDAY IN THE COUNTRY is a subtle and involving study of the emotional bonds that diverse philosophies that exist within one family.

This film runs 94 minutes. It is French with English subtitles and is rated G.

On SATURDAY, JANUARY 31 from 10am to 5pm, the Plainview-Old Bethpage Library will be offering a DEFENSIVE DRIVING COURSE.

This course will save you: DOLLARS by reducing your Motor Vehicle Insurance Premium; DRIVER RECORD VIOLATION POINTS by deducting 3 points from the total on your driver record; and YOUR LIFE by training you in safety smart driving techniques.

The price for this course is \$30 per person, with no refunds; no cancellations.

Come in and register at the Circulation Desk.

The Library is located at 999 Old Country Road in Plainview, opposite the Morton Village Shopping Center (938-0077).

?? SELLING YOUR HOME ??

OVER 37 YEARS OF SUCCESSFUL SERVICE

CALL TODAY - TOMORROW

SOLD
BY



VIGILANT

RESALE
SPECIALISTS

5 OFFICES TO SERVE YOU

WE BUY - SELL - RENT

ALL CASH TO OWNER

APPRAISALS • PROMPT INSPECTION • NO OBLIGATION

ONE OF
L.I.'s
LARGEST BROKERS

- REALES
- RENTALS
- MORTGAGES
- REFINANCES
- CONV., G.I./F.H.A.



\$ TOP DOLLAR \$

234 OLD COUNTRY RD., HICKSVILLE

938-2900

THE BEST MORTGAGE IN TOWN

6.75% 8.802%
APR

ONE YEAR ADJUSTABLE

This is a Below Market Introductory Rate for the 1st Year only. Thereafter, rates adjusted annually but never more than 2% up or down.

- 12.75% Lifetime Cap*
- ONLY 1½ Points
- Commitments usually within 2 to 3 weeks

*(with 30% down payment with 20% down payment 13.75%)

Call Brigitte Beck Mortgage Representative

for **Bayside Federal**

We'll meet with you at your convenience
7 DAYS A WEEK

(516) 331-4510



ACT NOW As Rates Are Subject to Change

On February 17,
The Bank of New York
will offer
Long Islanders
45 new branches
for their convenience.*

THE
BANK OF
NEW
YORK

*Subject to prior consummation of the merger of Long Island Trust Company, N.A. into The Bank of New York.
©1987 The Bank of New York MEMBER FDIC

Richmond Hill, Riverhead Savings Enter Merger Negotiations

Walter A. McDougal, Chairman of the Board of the Richmond Hill Savings Bank and Peter J. Costigan, Chairman of the Board of the Riverhead Savings Bank jointly announced that the two institutions are entering into merger negotiations. This action was approved by the respective Board of Directors at a Special Meeting held on January 14, 1987.

Richmond Hill Savings Bank is a stockholder owned New York State institution having 10 branches in Queens, Nassau and Suffolk Counties with gross assets of approximately \$900 million. The Riverhead Savings Bank is a Federal Mutual Savings Bank with 5 offices in Suffolk County with gross assets approximating \$400 million. The merger will greatly expand the combined in-

stitutions' presence on Long Island. They operate in different market areas and this merger will facilitate future growth and development.

Mr. Walter H. Miller, President, Richmond Hill Savings Bank and Mr. Gus Poulos, President, Riverhead Savings Bank, stated that the Riverhead Savings Bank will operate as a separate division of the Richmond Hill Savings Bank and will retain its strong community identification for which it is well known. The combined institutions will have assets of approximately \$1.3 billion.

The merger plans, when developed, must be approved by the shareholders of the Richmond Hill Savings Bank and the appropriate New York State and Federal regulatory agencies.



At the 16th Annual Contemporary Black Artists in America Art Exhibit, Great Neck Library, January 11 through March 7, 1987. Standing from Left to Right: Ivan Habersham (Curator), Elayne P. Bernstein, Great Neck Library Board of Trustees President and Leslye Nicholson (Artist).

A Third of These Teenagers are Either Drunk, Drugged, Pregnant or Suicidal.



For many teens the sweet days of youth become a terrifying nightmare. Find out how concerned communities are helping their troubled teenagers. With hosts First Lady Nancy Reagan and Sam Waterston.

Generation at Risk

Wednesday, January 28 at 8:00 PM

Tune in to the Long Island Report beginning Monday, January 26 at 6:30 PM for a week of special reports on Long Island's troubled teens and where they can go for help.

Monday Jan. 26 "Drug Abuse"

Tuesday Jan. 27 "Alcohol Abuse"

Wednesday Jan. 28 "Teen Pregnancy"

Thursday Jan. 29 "School Dropouts"

Friday Jan. 30 "Teen Suicide"

This Announcement run as a
Public Service

WLIW

Business and Finance

Meeting on Wednesday, February 4, to Feature Francine Berger, President, Speechworks, Inc., at George Washington Manor.

The North Shore Business Forum's luncheon meeting on Wednesday, February 4, will feature communications and motivational training specialist Francine Berger, President of Speechworks, Inc., headquartered in Stony Brook, NY. Her topic will be "Getting People to Say Yes." Beginning at 11:45, the meeting will take place at the George Washington Manor, Roslyn. For information/reservations phone 883-0930.

Now in its fourth year, the North Shore Business Forum provides an on-going opportunity for business and professional men and women, especially those located at the western end of Long Island's North Shore, to widen their contacts, promote their businesses and benefit from the exchange of ideas and practices. From the outset, Forum meetings have featured outstanding

speakers such as Ms. Berger who are experts in their fields.

According to Francine Berger, the most genuine communication is non-verbal. Because she believes that 55% of what passes between people consists of body language, the specialized communication skills she teaches focus upon what people reveal, for example, with their eyes, hands, arms, legs, feet, dress, stance, tone, all elements of clear but unspoken language.

As founder and President of Speechworks, Inc., she helps speakers speak, listeners listen, salesmen sell, leaders lead, and managers manage, always with greater skill because of their increased sensitivity to what people really are saying.

Ms. Berger's success as a teacher, seminar/workshop leader, and lecturer is due both to her prowess as a speaker as well as to her expertise gained in 25 years of creative programming and instruction.



portraits • parties • public relations
Susan Francy • photography • 516-922-8066



Nursery School

Kindergarten

First Grade



YOU ARE CORDIALLY INVITED TO OUR
SCHOOL OPEN HOUSE
SUNDAY, JANUARY 25, 1987 at 1:00 pm
(Please RSVP IF YOU CAN COME)

This is a wonderful chance for the entire family
to see the campus and meet our staff
Activities begin promptly at 1:00 pm.
Call for literature and directions.

**DAY CAMP OPEN HOUSE
ALSO ON SAME DATES**

Next Open Houses: March 22 and April 26

North Shore Day School
Crescent Beach Road, Glen Cove
(516) 676-0190

Beacon, Hicksville, is a

10



**"Come help us
celebrate our 10th
Anniversary, and
win one of 10
fabulous prizes."**

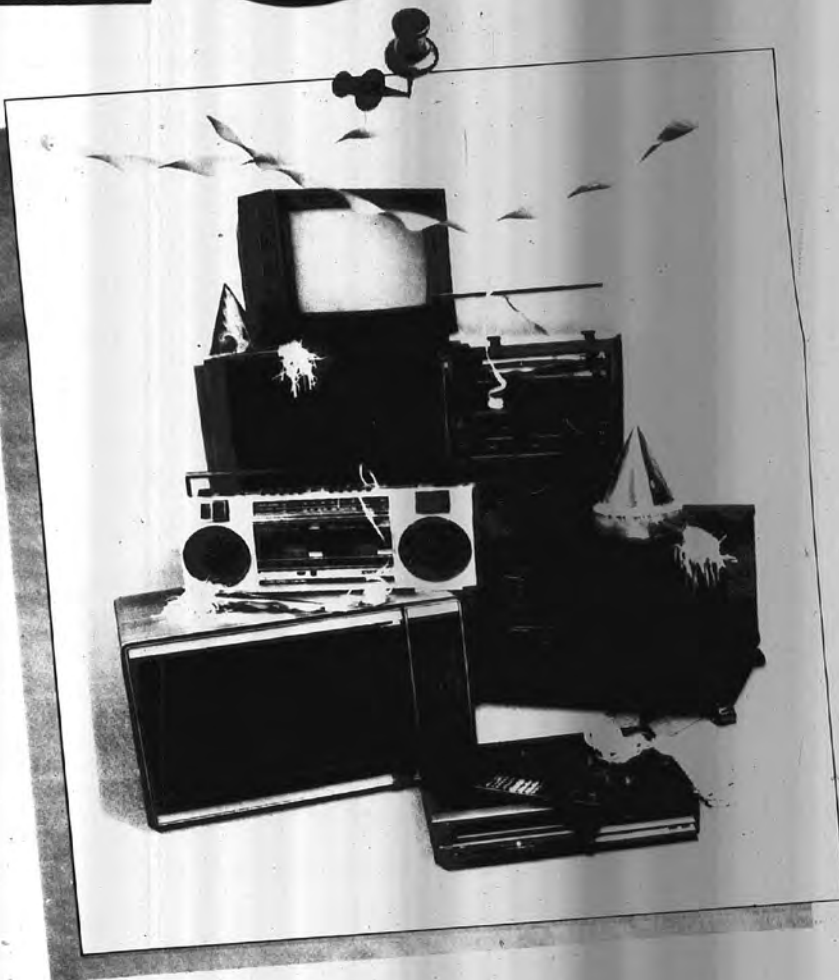
Kathy Janson
Branch Manager

Beacon Federal Savings Bank in Hicksville is celebrating 10 years of serving the business and personal banking needs of the Hicksville community. In appreciation for your business, and as a way to introduce ourselves to new depositors, we're having an Anniversary party. We'd like you to be a part of it!

From January 5 to January 31, we'll be having an Open House Celebration. Come in for refreshments and fill out an entry blank for a valuable prize drawing to be held at 2 P.M., Saturday, January 31, which you're cordially invited to attend. You could win a color TV, Microwave oven, VCR, Portable AM/FM radio. Or, you could be our grand prize winner and take home a complete home entertainment center.

Hicksville branch manager Kathy Janson and her staff look forward to explaining how Beacon's full-service banking can fulfill all your banking needs. From money markets to N.O.W. accounts. Mortgages to home improvement loans. Insurance to securities, plus more. You'll see why for ten years, Beacon has been Hicksville's caring bank.

**\$300 MINIMUM ON
N.O.W. CHECKING**
5 1/4% interest; no per
check fee. Compare
with any other bank!



BEACON
FEDERAL SAVINGS BANK

169 Old Country Road, Hicksville, NY 11801 (516) 935-0522

"Drug-Free Day" Set For Feb. 14

A nationwide campaign to observe St. Valentine's Day, February 14, as "Drug-Free Day" in America has been launched by the Children's Rescue Foundation of New York.

To inaugurate this effort in New York State, Gov. Mario Cuomo has pledged his office's full support, and has said he will sign a proclamation calling on New Yorkers to observe Valentine's Day as Drug-Free Day.

Michael Szymanski, president of the Children's Rescue Foundation, a private, nonprofit organization, said, "We are asking America—parents as well as children—to stop abusing themselves on this day. Adults have to realize that they are role models for their children. We ask that Valentine's Day be acknowledged as a day of love, and we call on our youngsters to stop their use of illegal drugs on Drug-Free Day. We also ask that the adults, as well, show their love by not using any non-essential, non-prescription, so-called mood elevators, as well as any illegal substances."

The Children's Rescue Foundation is a 501(c)(3) in the

rest of the country to join in helping make Drug-Free Day a success. Toward this end, Rep. Charles Rangel of the 16th C.D. plans to sponsor a joint resolution in early January to proclaim Valentine's Day Drug-Free Day.

In supporting the effort, Julio A. Martinez, Director of New York State's Division of Substance Abuse Services, said, "Prevention, education, and treatment should be the thrust to enable young people to live a holistic lifestyle, free of drugs. In the spirit of St. Valentine's Day, we ask all parents, children, and friends in New York to fight

illegal substance abuse before it starts."

In the seven weeks to St. Valentine's Day, the Children's Rescue Foundation will sponsor concerts and media appearances to focus attention on the dangers of drug and alcohol abuse, and to call for cooperation of government leaders, entertainers, and business executives.

Mr. Szymanski said further information about Drug-Free Day is available from the Children's Rescue Foundation, Box 823, Glenwood Landing, NY 11547 (516) 671-2943; outside NYS (1-800-237-1595).

Superstation TV-55 to Salute Bob Hope

Superstation TV-55, Long Island's only commercial television station will salute America's master comedian during Bob Hope Weekend (January 23rd-January 25th). Hope films included in the salute are:

The Seven Little Foys - The 1955 top-grosser highlighting the vaudeville career of Eddie. The two best scenes include Cagney as Cohan and the kid in the dresser.

The Road to Rio - Bing Crosby, Dorothy Lamour, and the Andrews Sisters join Bob for a wild ride.

The Road to Bali - Cameos by Jane Russell, Dean Martin, and Jerry Lewis highlight Bing and Bob's mad romp.

Immediately following Bob Hope Weekend, on Monday January 26th, TV-55 will present a colorized version of John Huston's classic The Maltese Falcon.

All above films air during TV-55's acclaimed Prime Time Movie at 8 PM.

Contract Bridge B. Jay and Steve Becker

The Horns of a Dilemma

South dealer.

Neither side vulnerable.

NORTH

♠ 953

♥ K94

♦ AK82

♣ J103

WEST

♠ K

♥ J8532

♦ 1074

♣ KQ82

EAST

♠ J74

♥ 106

♦ J963

♣ A765

SOUTH

♠ AQ10862

♥ AQ7

♦ Q5

♣ 94

The bidding:

South West North East

1 ♠ Pass 2 ♦ Pass

2 ♠ Pass 3 ♠ Pass

4 ♠

Opening lead—king of clubs.

If a player is forced to guess in a difficult situation, he will sometimes guess right and sometimes guess wrong. Largely for this reason, the best players try to arrange their play so that they will be confronted by as few guesses as possible.

South unnecessarily subjected himself to a guess on this deal, and when he eventually guessed wrong, he wound up down one in four spades.

The defenders began by playing

the K-A and another club, ruffed by South. Declarer now crossed to dummy with a heart and led a spade to the queen, losing to West's king.

South won the low heart return, entered dummy with a diamond and led a second spade. After East followed low, declarer agonized for a long time but finally decided to play the ace. Result—down one.

Although South's line of play would have succeeded most of the time, he could have and should have avoided the trump guess altogether. In fact, had he played the hand technically correctly, he would have made eleven tricks instead of nine!

South's one and only aim from the start should have been to avoid losing two trump tricks. In line with that, he should therefore have cashed the ace of spades at trick four, tentatively planning to cross to dummy next for a second spade lead towards his Q-10-8-6-2.

This method of play insures the contract against any 2-2 break, any 3-1 break where the singleton is an honor, and any 3-1 or 4-0 break where East holds the trump length. Declarer fails only when West started with K-J-x or K-J-x-x of spades, in which case not even a doctor could help.

In the actual deal, cashing the ace catches West's king, leaving a marked finesse against East's jack for an overtrick.



BIRCH TREE REALTY, INC.
Fine homes in Jericho,
Syosset, Woodbury,
Brookville, Muttontown.
496-3434

ASK YOUR DENTIST



CALORIES AND CAVITIES

QUESTION: I'm trying to keep my weight down by eating less, but I still get cavities. Is there a diet that will control weight and stop dental decay, too?

ANSWER: The problem is probably in the amount of sugar or sweetened foods you consume, not in the amount of food you eat. Many people make an effort to eat less. But in spite of this resolve, a recent study has shown that Americans are consuming just as much sugar today as they were 10 years ago, and even more corn sweeteners, a common ingredient in packaged foods. Each year, in fact, Americans are consuming the average person's weight in table sugar and corn sweeteners, about 129 pounds worth. These are called empty calories because they contain essentially no nutrients. The more sugar you consume, the greater the chance of tooth decay.

Feel free to write or call for further information.
R. SCOTT MUNTER, D.D.S.
Dental Anxiety Control Center
420 Broadway, Jericho, N.Y.
935-0066

GIESE FLORIST

Send a gift
just for fun.

The FTD® Tickler®
Bouquet.
Call or visit us today.

Send your thoughts
with special care

* Registered trademark of Florists'
Transworld Delivery Association

GIESE FLORIST
248 S. BROADWAY, HICKSVILLE



931-8241

(NEXT TO ROBERTS CHEVROLET) (NY)

EVERY WINE LOVER DESERVES AN ENCORE.

Bordeaux, Riesling, Chardonnay, Cabernet Sauvignon.

To sample the great wines of the world during an evening's repast would be an expensive proposition. Except at Encore.

Our unique cruvinet enables us to feature twelve distinguished wines—each at its own perfect temperature, ready to be enjoyed by the glass. And we offer different wines from noted vintners each evening. Great wines by the glass, continental cuisine in an elegant atmosphere. Now that's worth an Encore.

Encore

"A Restaurant Worth Repeating"
Open for lunch and dinner.
Monday-Saturday
Call (516) 231-1100 for
Reservations

Sheraton Smithtown

The hospitality people of L.I.E.
110 Vanderbilt Motor Parkway (Exit 54, I.I.E.)



DALTON
FUNERAL HOMES INC.

FOUNDED 1924

FLORAL PARK
135 ATLANTIC AVENUE
NEW HYDE PARK
135 HILLSIDE AVENUE
WILLISTON PARK
412 WILLS AVENUE
(516) 354-0634

HICKSVILLE
47 JERUSALEM AVENUE
LEVITTOWN
2708 HEMPSTEAD TURN
(516) 931-0262

PLUMBING BOTTO BROS. HEATING

SAVE TIME
AND ENERGY

genuine
IN-SINK-ERATOR



- Stainless steel & galvanized steel parts for long life.
- In-home service warranty.
- Exclusive self-service "Wrenchette" frees simple jams.
- Powerful motor for efficient grinding.
- America's top replacement line.

AS LOW AS \$199⁹⁵

Plus installation

CALL TODAY FOR APPOINTMENT

NOW GET 190°
WATER INSTANTLY!



IN-SINK-ERATOR
Steamin' Hot, hot
Water Dispenser.

- Saves time and money.
- Works like a super hot water heater.
- Ideal for soups, tea, coffee, gelatins, dozens of uses.

Plus installation ONLY \$139⁹⁵

BOTTO BROS

PLUMBING & HEATING
CONTRACTORS

128 Woodbury Rd. • Hicksville • 935-2900

CELEBRATE THE GRAND OPENING OF "THE GREEN POINT'S" HICKSVILLE OFFICE

GRAND OPENING
BANKING HOURS
MONDAY-FRIDAY
9:00 a.m. - 5:00 p.m.
SATURDAY
10:00 a.m. - 6:00 p.m.

PICK YOUR RATE

60-MONTH TIME DEPOSIT 7.95% Effective Annual Yield 7.45% Current Annual Rate Minimum Deposit: \$5,000	30-MONTH TIME DEPOSIT 7.22% Effective Annual Yield 6.67% Current Annual Rate Minimum Deposit: \$5,000	12-MONTH TIME DEPOSIT 7.04% Effective Annual Yield 6.30% Current Annual Rate Minimum Deposit: \$5,000	6-MONTH TIME DEPOSIT 6.36% Effective Annual Yield 5.92% Current Annual Rate Minimum Deposit: \$5,000	MONEY MARKET OR SUPER G PASSBOOK 6.00% Effective Annual Yield 5.83% Current Annual Rate Money Market (\$2,500 min.) Super G (\$5,000 min.)
---	---	---	--	---

PICK YOUR BONUS

YOU DEPOSIT AMOUNT	YOU RECEIVE			
	60-MONTH (1% BONUS)	30-MONTH (1/2% BONUS)	12-MONTH (1/4% BONUS)	6-MONTH (1/8% BONUS)
\$100,000	\$1,000.00	\$750.00	\$500.00	\$250.00*
75,000	750.00	562.50	375.00	187.50
50,000	500.00	375.00	250.00	125.00
25,000	250.00	187.50	125.00	62.50
10,000	100.00	75.00	50.00	25.00
5,000**	50.00	37.50	25.00	12.50
2,000 (IRA only)	20.00	15.00	10.00	—

*Maximum bonus on 6-Month accounts is \$250. **Minimum deposit for bonus is \$5,000 (\$2,000 for IRAs and Qualified Plans in a TD of 12 months or longer)

SPECIAL IRA BONUS RATES PAY .25% MORE THAN REGULAR RATES

IRA TIME DEPOSIT	EFFECTIVE ANNUAL YIELD	CURRENT ANNUAL RATE
60-Month	8.22%	7.70%
12-Month	7.30%	6.55%

These higher rates and bonuses are also available for IRA Successor Trustee Transfers and Qualified Defined Contribution Plans for the self-employed (Unincorporated).

SPECIAL GIFTS

For Money Market, Super G Passbook, NOW and Super NOW accounts.

YOU DEPOSIT	YOU RECEIVE
\$10,000 or more	\$20 cash
\$5,000-\$9,999	\$10 cash

Deposit \$2,500 to \$4,999 and you receive a Solar-Powered Calculator (Super G Passbook not eligible).

Bonus will be added to account on day of deposit as interest. Effective annual yield for Time Deposits and IRA Time Deposits includes cash bonus amortized over term of account and assumes bonus, principal and interest remain on deposit a full year; however, the six-month annual rate is subject to change at renewal. Interest is compounded daily on all accounts and is credited quarterly on Time Deposits and Super G Passbook; monthly on Money Market, NOW and Super NOW accounts.

Bonus may be withdrawn by the depositor at any time if the initial deposit was made with cash (or with a check that has subsequently cleared, provided signature identification has been received). For IRAs, withdrawals cannot (in most cases) be made prior to age 59½ without incurring a substantial penalty. In addition, if premature withdrawal

from any Time Deposit is permitted by the Bank, a substantial penalty and return of the cash bonus are required.

Minimum deposit in a Money Market, Super G Passbook, NOW or Super NOW account must remain on deposit for a period of 30 days in consideration of gift received. Only one gift or cash bonus per account. Warranties, expressed or implied, are the responsibility of the manufacturer.

The Bank reserves the right to change or discontinue this offer at any time without prior notice. Complete details available on all accounts. Offer good at Hicksville Office only. Transfers of accounts from other offices of "The Green Point" are not eligible for bonuses or gifts.

All accounts must be opened in person — no mail.

"The
Earnings
Bank"



The Green Point
Savings Bank

Chartered 1868

Member FDIC



Mortgage
Money
Available

190 BROADWAY (ROUTE 107) AT OLD COUNTRY ROAD, HICKSVILLE (516) 938-4000

The bank is not responsible for typographical errors.

Rates subject to change without notice.

DR. ROBERT E. GUSKIN

Podiatrist - Foot Specialist

FREE CONSULTATION

Empire, Medicare, GHI-CPB, Travelers, Prudential, Conn., General, Guardian, 1199, Hartford, Union Plans and Many Others Accepted As Full or Partial Payment.

(with this ad)



ROBERT E. GUSKIN, D.P.M.
71 N. Broadway, Hicksville
(516) 931-0311



*FREE Consultation Does Not Include X-Rays and Treatment Coupon Must Be Presented At Time Of First Visit Expires Apr. 15, 1987

The Investor's Corner

By JOSEPH P. FREY, Ph.D.

The Silly Season is Over—Forever!

The silly season for investors has been November and December of any year. They get frenzied as a tax year comes to a close. April 15, looms over the horizon and people go crazy looking for ways to cut their tax bills. In the old days, prior to the 1982 and 85 tax bills, the tax shelter salespeople preyed on this frenzy. Today, many people are trying to get out of the tax shelters they had purchased over the last several years. This is a subject I have spent eighteen months researching. The tax laws of '82 and '86 reduced much of the frenzy. This year I did not have any old-fashioned tax shelters to check out for clients, which was ok with me since I have never considered them good investments, just tax dodges.

My financial New Year's wish is no new tax laws in 1987. I hope Congress lets the '86 laws prove or disprove themselves. Nothing may be broken; nothing may need to be "fixed". Yet on December 31, 1986, I found myself investing in a resort hotel condominium which I have written about in this column. It was not a frenzied decision—it seemed right for me. I had advised several clients to purchase one or more units of this investment. My advice was based on the numbers.

After Christmas, I went to Atlantic City on a "due diligence" trip. "Due diligence" is a process that an advisor or investment company goes through to check the claims of an investment offering. Does it exist? Are the assumptions probable? The descriptions valid? It is a process that protects the advisor and the client. The advisor must be assured that the claims are reasonable.

Obviously, I liked what I saw because I joined my clients as an investor. While some of the more favorable tax provisions are no longer valid, it still is a good investment for some people who want income that is tax sheltered with the prospect of appreciation.

The basic rules of investing should be purchase what is suitable. The tax treatment should be a lesser consideration. If it is favorable so much the better.

These kinds of investments are not for everyone. They are highly leveraged. That is, they use a very high percentage of debt. Obviously, you have to convince the bank that you can pay the monthly mortgage. It also is in conformity with my rule #6 of "How to Get Rich" use other people's money.

This leads to a topic: the role of the investment advisor. The mail and phone calls make me believe that that would be valuable.

It has become more urgent because of two recent events: on January 4, the 60 Minutes television program featured a segment on a widow whose \$300,000 plus was reduced to \$800 by overtrading (churning on the advice of a stockbroker). This in only one more case in a long list that have gone to arbitration. Please remember that while some trading may be necessary, excessive trading enriches the stockbroker and may impoverish the investor.

The second event was an unsolicited phone call from a stockbroker asking for my business. I get many such phone calls. However, this was January 5. The widow was founded by her stockbroker or investment advisor.

To find an advisor, the investor must take time to investigate, to ask, to probe, to weigh investment approaches. You should be comfortable with your advisor—there should be an element of trust, but never complete trust. Rule #2 says that you must be involved in your financial decisions. Next week we will list some things to check when choosing an advisor.

Doctor Frey is a professor of investments and finance at C.W. Post Campus on Long Island. If you wish a copy of his "Ten Rules to Get Rich and Keep It, Too," send a self-addressed, large envelope to Anton Community Newspapers, 132 East Second Street, Mineola, NY 11501. Attn: Dr. Frey. If you have questions you wish answered, send an envelope and include a phone number in case Dr. Frey needs additional information.

Oyster Bay Media Connection

Communicating

Oyster Bay was well represented at the annual Grumman Public Affairs Dinner at the Viennese Coach Restaurant. The breezes from the harbor must be a media inspiration.

Wouldn't you know, they started the affair with oysters. Even lovely Gwen Young of Newsday, whose beat is TOB was there.

NOTICE TO BIDDERS

Notice is hereby given that Sealed Proposals for the furnishing of custodial services for the office of the Administration Building of the Hicksville Water District will be received by the Board of Commissioners of the Hicksville Water District in the office of the Board at 4 Dean Street, Hicksville, New York, until 4:00 P.M. on February 17, 1987, they will be publicly opened and read at 7:00 P.M.

Specification, Information to Bidders and Proposal Forms may be obtained at the District Office, 4 Dean Street, Hicksville, New York.

Each proposal must be accompanied by a certified check or bid bond in the amount of five percent (5%) of the bid amount payable to the Hicksville Water District, as assurance that the bid is made in good faith.

The Board reserves the right to reject any and all bids, waive any informalities, and to accept such bid which in its opinion, is in the best interest of the Water District.

Dated: January 22, 1987
Hicksville, New York
BOARD OF COMMISSIONERS
HICKSVILLE WATER DISTRICT
Of the Towns of Oyster Bay and Hempstead
Gilbert E. Cusick, Chairman
Richard A. Humann, Treasurer
Nicholas J. Briganti, Secretary
01-22-87 1T-48 Herald

NOTICE TO BIDDERS

Please take notice that SEALED BID PROPOSALS will be received and must be stamped at the DIVISION OF PURCHASE & SUPPLY, Department of General Services, Town of Oyster Bay, at its office located on the fourth floor, Town Hall, West Building, Audrey Avenue, Oyster Bay, New York, not later than 11:00 a.m. (prevailing time) on February 9, 1987 following which time bids will be publicly opened and read at the Town Hall East Building Hearing Room and the contract awarded as soon thereafter as practicable for:

PURCHASE OF REQUIREMENTS FOR POOL/RINK & VARIOUS CHEMICALS AS SPECIFIED IN BID PROPOSAL M & S 907-87.
PURCHASE OF REQUIREMENTS FOR POOL ACCESSORIES AS SPECIFIED IN BID PROPOSAL M & S 905-87.
PURCHASE OF REQUIREMENTS FOR OFFICE SUPPLIES AS SPECIFIED IN BID PROPOSAL M & S 904-87.

Detailed specifications and proposals sheets may be obtained at the office of DIVISION OF PURCHASE AND SUPPLY, located on the fourth floor, Town Hall, West Building, 74 Audrey Avenue.

Oyster Bay, New York on and after January 26, 1987 from 9:00 a.m. to 4:45 p.m., Monday through Friday. Postage for mailing is required. JOSEPH COLBY, SUPERVISOR; ANN R. OCKER, TOWN CLERK; PHILIP FASULLO, SUPERINTENDENT OF PURCHASING. DATED: JANUARY 15, 1987

1-22-87 1T-53 Sysoset

AMENDMENTS TO THE CODE OF ORDINANCES TOWN OF OYSTER BAY STREETS AND SIDEWALKS - PERMIT FEES AMEND CHAPTER 21

BE IT ORDAINED, by the Town Board of the Town of Oyster Bay, County of Nassau, State of New York, that Article II, "SIDEWALKS, CURBS AND GUTTERS" of Chapter 21 "STREETS AND SIDEWALKS" of the Code of Ordinances of the Town of Oyster Bay, New York, be and the same is hereby amended to read as follows:

DELETE: Section 21-38 "PERMIT FEES" in its entirety and in its place
ADD: New Section 21-38 "PERMIT FEES" to read as follows:

By order of the Town Board, except where otherwise provided by law, or where permits required by this division are granted for work done at the direction of the Commissioner of the Department of Public Works or his designee, each application for a permit which is granted by the Commissioner of the Department of Public Works or his designee for a street opening or excavation in any street, highway or sidewalk in the Town for any purpose, shall be accompanied by a fee if the amount as noted herein for each such opening or excavation.

(a) PERMIT FEES FOR CURB CUT CONSTRUCTION

Curb Cut - Residential (maximum 18 ft) \$30.00
Curb Cut - Commercial (maximum 30 ft) \$30.00
In the event a curb cut must exceed the maximum set forth, an additional \$30.00 fee and written approval by the Commissioner of the Department of Public Works are required.

(b) PERMIT FEES FOR SIDEWALK CONSTRUCTION

Sidewalk Construction—each 100 ft. or any part thereof \$30.00

(c) PERMIT FEE FOR CURB CONSTRUCTION

Curb Construction—each 100 ft. or any part thereof \$30.00

Curb Drain Connection (includes skupper) \$30.00

(d) PERMIT FEE FOR HIGHWAY EXCAVATION

Road openings each four ft. width or any part thereof \$30.00

No street opening or excavation may be over four (4) feet in width unless special permission in writing is received from the Commissioner of the Department of Public Works or his designee.

The above permits shall expire thirty (30) days from the date such permit is issued unless work is in progress at the end of such period. Public Utility companies serving the Town will pay fees in the same amounts as listed above. However, such companies need not submit payment with each application. Each Public Utility will be billed monthly by the Town of Oyster Bay for each permit issued to it during the previous month.

BY ORDER OF THE TOWN BOARD OF THE TOWN OF OYSTER BAY: Joseph Colby, Supervisor; Ann R. Ocker, Town Clerk; Dated: January 13, 1987; Oyster Bay, New York.
STATE OF NEW YORK,
COUNTY OF NASSAU, ss:
TOWN OF OYSTER BAY

I, ANN R. OCKER, Town Clerk of the Town of Oyster Bay, and custodian of the Records of said Town, DO HEREBY CERTIFY that I have compared the annexed with the original Amendments to the Code of Ordinances of the Town of Oyster Bay, Amend Chapter 21 - Streets and Sidewalks - Permit Fees, filed in the Town Clerk's Office and that the same is a true transcript thereof, and of the whole of such original.

In Testimony Whereof, I have hereunto signed my name and affixed the seal of said Town this 15th day of January 1987.

SEAL
ANN R. OCKER, Town Clerk
1-22-87 1T-48 PLV



island
telephone
answering
service inc.

MAIN OFFICE Wells 5-4444

FULL • PART TIME • VACATION
HOURLY OR MESSAGE RATE

National Westminster Bank USA Building
20 JERUSALEM AVE., HICKSVILLE, N.Y.
Serving Nassau and Suffolk Since 1945

PLAINVIEW

AUCTION IN LIQUIDITY CRISIS

DEFAULT ON PAYMENTS
12 BALES (178 PIECES)

PERSIAN & ISLAMIC RUGS & CARPETS

IN ADDITION COLLECTION OF BRONZES

The bales have now been released for disposal at auction and will be sold piece by piece for immediate cash realization.
Stock includes: Tribal Rugs, Kazak, Afghans, Turkey, Village Rugs, Hamadan, Afshan, Urban Rugs, Tabriz, Bokhara, Kashan, Gum, Isfahan, Silk Kashani, Silk Herati, Silk Qum, Silk and Silk Base of the highest investment Quality and others.
Bronzes incl. Animalier, Classic, Western by Mene, Remington, Cloison, Barre and others.

AUCTION WILL BE HELD AT

THE HOLIDAY INN - PLAINVIEW

215 SUNNYSIDE BOULEVARD

Directions: L.I. Expressway Off Exit 46

ON SAT., JAN. 31st 2PM - VIEW 1 PM

CONTRACTED LIQUIDATOR:
FIDELITY AUCTIONEERS

TERMS: CASH, CHECK, VISA, MC, AMEX TEL: 201-224-5334

AMENDMENTS TO THE CODE OF

TOWN OF OYSTER BAY WATERWAYS ORDINANCE MOORING PERMIT FEES

BE IT ORDAINED, by the Town Board of the Town of Oyster Bay, New York, that Section 5-52 "Anchoring and Mooring Rules and Regulations for Oyster Bay Harbor" of Division 2 "Mooring and Anchoring" of Article II, "Use and Operation" of Chapter 5 "Waterways Ordinance" of the Code of Ordinances of the Town of Oyster Bay, as amended, be and the same is hereby amended by adding to Sub-division (D) thereof, a new paragraph (D3) to read as follows:

AMEND: Sec. 5-52, Anchoring and Mooring Rules and Regulations for Oyster Bay Harbor, (DK13)
DELETE: Subsection (DK13) of the said section, and
ADD: in its place the following:
Sec. 5-52, (DK13)

The fee for any mooring permit issued under this section shall be twenty (\$20.00) dollars for residents of the Town of Oyster Bay and thirty-five (\$35.00) dollars for non residents thereof. The fee for a courtesy and commercial permit issued pursuant to this section shall be thirty-five (\$35.00) dollars.

BY ORDER OF THE TOWN BOARD OF THE TOWN OF OYSTER BAY: Joseph Colby, Supervisor; Ann R. Ocker, Town Clerk; Dated: January 13, 1987; Oyster Bay, New York.

STATE OF NEW YORK ss: COUNTY OF NASSAU ss: TOWN OF OYSTER BAY ss:

I, ANN R. OCKER Town Clerk of the Town of Oyster Bay, and custodian of the Records of said Town, DO HEREBY CERTIFY that I have compared the annexed with the original AMENDMENTS TO THE CODE OF ORDINANCES, TOWN OF OYSTER BAY adopted by the Town Board on January 13, 1987, WATERWAYS ORDINANCE MOORING PERMIT FEES - Amend Chapter 5, filed in the Town Clerk's Office and that the same is a true transcript thereof, and of the whole of such original.

In Testimony Whereof, I have hereunto signed my name and affixed the seal of said Town this 15th day of January 1987.

SEAL ANN R. OCKER
Town Clerk
1-22-87 17-P-51-Plainview

AMENDMENTS TO THE CODE OF ORDINANCES

(MOTOR VEHICLES AND TRAFFIC)
BE IT ORDAINED, by the Town Board of the Town of Oyster Bay, County of Nassau, State of New York, that the Code of Ordinances of the Town of Oyster Bay, New York, adopted October 5, 1971, as amended, be and the same is amended, as follows:

That the following locations be ADDED TO SECTION 17-44 of the said Code establishing thereunder the following locations as points where LEFT TURNS or RIGHT TURNS, as the case may be, shall or shall not be made, and such locations shall be appropriately designated by posted signs: PLAINVIEW OLD BETHPAGE ROAD at Palo Alto Drive - traffic northbound on Old Bethpage Road shall be prohibited from turning right during the hours of 7 AM to 9 AM Monday thru Friday. OLD BETHPAGE ROAD at Burbank Place - traffic northbound on Old Bethpage Road shall be prohibited from turning right during the hours of 7 AM to 9 AM Monday thru Friday. OLD BETHPAGE ROAD at Fresno Drive - traffic northbound on Old Bethpage Road shall be prohibited from turning right during the hours of 7 AM to 9 AM Monday thru Friday.

That the following locations be ADDED TO SECTION 17-52 of the said Code establishing NO

STOPPING ZONES, which shall be appropriately designated by posted signs: GLEN HEAD - OAKLAWN AVENUE, north side - starting from the west curb line of Walnut Street, west for a distance of 30 feet; south side - starting from the west curb line of Walnut Street, west for a distance of 30 feet; WALNUT STREET - west side - starting from the north curb line of Oaklawn Avenue, north for a distance of 48 feet; east side - starting from the north curb line of Oaklawn Avenue, north for a distance of 30 feet; east side - starting from the south curb line of Oaklawn Avenue, south for a distance of 42 feet; OAKLAWN AVENUE - south side - starting from the east curb line of Glen Head Road, east for a distance of 50 feet; OYSTER BAY - HILL DRIVE - west side - starting from the south curb line of Summit Court, south to the north curb line of Summit Court at (physical median).

BY ORDER OF THE TOWN BOARD OF THE TOWN OF OYSTER BAY

Ann R. Ocker, Town Clerk
Joseph Colby, Supervisor
Dated: Oyster Bay, New York
January 13, 1987

STATE OF NEW YORK
COUNTY OF NASSAU ss: TOWN OF OYSTER BAY ss:

I, ANN R. OCKER Town Clerk of the Town of Oyster Bay, and custodian of the Records of said Town, DO HEREBY CERTIFY that I have compared the annexed with the original Notice of Amendments to the Code of Ordinances of the Town of Oyster Bay (Motor Vehicles and Traffic) adopted by the Town Board on January 13, 1987, filed in the Town Clerk's Office and that the same is a true transcript thereof, and of the whole of such original.

In Testimony Whereof, I have hereunto signed my name and affixed the seal of said Town this 14th day of January, 1987.

SEAL Ann R. Ocker, Town Clerk
1-22-87 17-P-49-PLV

NOTICE TO BIDDERS

Please take notice that SEALED BIDS PROPOSALS will be received and must be stamped at the DIVISION OF PURCHASE & SUPPLY, Department of General Services, Town of Oyster Bay, at its office located on the fourth floor, Town Hall, West Building, Audrey Avenue, Oyster Bay, New York, not later than 11:00 A.M. (prevailing time) on February 9, 1987 following which time bids will be publicly opened and read at the Town Hall East Building Hearing Room and the contract awarded as soon thereafter as practicable for:

INVITATION TO BID FOR TOWN OF OYSTER BAY VARYING CATEGORIES OF ALUMINUM SCRAP AS SPECIFIED IN BID PROPOSAL SE 006-87 Detailed specifications and proposal sheets may be obtained at the office of DIVISION OF PURCHASE & SUPPLY, located on the fourth floor, Town Hall, West Building, 74 Audrey Avenue, Oyster Bay, New York on and after January 26, 1987 from 9:00 A.M. to 4:00 P.M., Monday through Friday.

Dated: January 16, 1987
POSTAGE FOR MAILING IS REQUIRED.
JOSEPH COLBY, SUPERVISOR; ANN R. OCKER, TOWN CLERK; PHILIP FASULLO SUPERINTENDENT OF PURCHASING.
01-22-87 17-P-52-Syossets

NOTICE OF PUBLIC HEARING
BY THE BOARD OF ZONING APPEALS
Pursuant to the provisions of Article 27, Section 269 of the Building Zone Ordinance, NOTICE is hereby given that the BOARD OF ZONING APPEALS of the Town of Hempstead will hold a public hearing in the Town Meeting pavilion, Town Hall Plaza, Main Street, Hempstead, New York on February 4, 1987 at 9:30 A.M. & 2:00 P.M. to consider the following application and appeals:

THE FOLLOWING CASES WILL BE CALLED AT 9:30 A.M.
129, OCEANSIDE Irving Grossman, Maintain

ground sign, S/S Atlantic Ave., 691.96' E/O Waverly Ave.
130, INWOOD - Frank & Alfred Santora, Maintain two family dwlg., 52 Carman Ave.
131, INWOOD - Frank & Alfred Santora, Renewal of permit for a variance in off-street parking, S/E cor. Lorella St. & West End Ave.
132, ATLANTIC BEACH - Westbury Atlantic Club, Inc., Renewal of permit to use premises for parking field, S/E cor. Park St. & Ithaca Ave.
133, WEST HEMPSTEAD - James A. Donley, Jr., Maintain two family dwlg., 105 Spruce St.
134, NR. WESTBURY - Vito & Antoinette Ramaglia, Mother - Daughter Res. (2nd kitchen), S/S Cameo Lane, 439.50' W/O E. Choir Lane.
135, GARDEN CITY SO. - Paul & Marianne Principato, Variance lot area occupied, front yard setback, construct addition, N/E cor. Ardley Blvd. & Kensington Rd.
136, ELMONT - James & Diane Jackman, Side yard variance, construct 1 story addition, W/S Lincoln St., 407' S/O Albertson Ave.
137, WEST HEMPSTEAD - Eileen Wanser, Mother - Daughter Res. (2nd kitchen), S/S Washington Ave., 293.48' W/O Jennings Ave.
138, NO. MERRICK - Peter Sinetos, Variance, side yards aggregate, lot area, front width, subdivision of lot, maintain dwlg., 1 sty addition & entry, W/S Meadowbrook Rd., 100.02' S/O Bridge St.
139, NO. MERRICK - Peter Sinetos, Variance, front width, subdivision of lot, construct dwlg., wigarage, W/S Meadowbrook Rd., 150.01' S/O Bridge St.
140, INWOOD - Maria Marino, Variance, lot area, front width, subdivision of lot, maintain dwlg., S/S Solomon Ave., 420.11' E/O Jeanette Ave.
141, INWOOD - Maria Marino, Variance, lot area, front width, subdivision of lot, maintain dwlg., S/S Solomon Ave., 420.11' E/O Jeanette Ave.
142, ELMONT - Robert & Lillian Jaroneczyk, Variance, front yard average setback, side yard, side yards aggregate, construct 2nd story, N/S Kiefer Ave., 100' E/O Stewart Ave.
143, 145, MERRICK - Philip Basile, Rear yard variance to construct retail store, height variance to construct tower; Permission to park in Res. "B" zone; Variance, off street parking & permission to

park in front yards, N/E cor. Merrick Rd. & Henry St.

THE FOLLOWING CASES WILL BE CALLED AT 2:00 P.M.

135, ELMONT - Aldo Capogna, Variance, lot area, front width, rear yard, (w/earl ent. encl.) subdivision of lot, construct dwlg., wigarage, N/S Journal Ave., 158' E/O Meacham Ave.
147, ELMONT - Aldo Capogna, Variance, lot area, front width, rear yard, (w/earl ent. encl.) subdivision of lot, construct dwlg., wigarage, N/S Journal Ave., 203.50' E/O Meacham Ave.
148, LEVITTOWN - Robert C. & Edith A. Cassese, Mother - Daughter Res. (2nd kitchen), W/S Jerusalem Ave., 136.37' S/O Eagle Lane.
149, LIDO BEACH - Helen Atalis, Variance, lot area occupied, maintain deck & greenhouse, S/S Channel Rd., 241.929' E/O Bay Lane.
150, LEVITTOWN - Leonard & Thelma Peluso, Variance, side yard, side yards aggregate, maintain addition, N/S Robolink Lane, 274.02' W/O Flamingo Rd.
151, BALDWIN HARBOR - Wayne Mathewson, Variance, rear yard, maintain 2nd story addition, S/S Jefferson St., 340' W/O Western Blvd.
152, WEST HEMPSTEAD - Persefoni Kyrgyros, Mother - Daughter Res. (2nd kitchen), E/S Poplar St., 147.12' N/O Hempstead Ave.
153, BALDWIN - William S. Cohn & Herman Cohn, Waive off street parking (maintain office), S/W cor. Merrick Rd. & Lakeside Dr.
154, EAST MEADOW - Vincent & Lene Cuno, Variance, front yards setback, variance (Waive off street parking), construct addition w/2 car garage, S/W cor. Park Ave. & Waverly Pl.
155, 157, INWOOD - Joseph A. Loria, Variance, lot area occupied, front yard setback, side yard, rear yard, construct dwlg. & use for storage of contract equipment & vehicle; Permission to park in Res. "C" zone; Waive off street parking & permission to park in front yard setback, N/E side Zavatt St., 381.27' S/W of Beach St.
Interested parties should appear at the above time and place. By Order of the Board of Zoning Appeals.
Henry W. Rose, Chairman
1-22-87 17-P-50-HEW

Saint Paul's School



The Cathedral School of Saint Mary



invite you to their
OPEN HOUSE

Sunday, February 1st
1:00p.m. - 4:00p.m.

Scholarship Testing
1:00p.m.

For students entering
5th through 11th
grades next year

PLACE
Saint Paul's
School
295 Stewart Avenue
Garden City, N.Y.
(516) 747-3377
Boys, Grades 5-12
Day and 5-Day Boarding

PLACE
The Cathedral School
of Saint Mary
32 Cathedral Avenue
Garden City, N.Y.
(516) 746-1061
Girls, Grades 1-12

Goldman Bros.

**We Are Many Different Things
To Many Different People...**



- Uniforms - Work, Service, Industrial. New styles, new fabrics, complete fitting & tailoring.
- Uniforms & equipment for Industrial softball, basketball & bowling leagues.
- Over 1800 styles of service & safety shoes, hiking & hunting boots.
- Athletic Footwear - Running & exercise gear, sports equipment.
- Leisure sportswear - pants, shirts, jackets, hats & other basics.
- Custom emblem & monogram service - We reproduce your emblem or design one for you.
- We have it all! Short, tall, skinny, fat, narrow, wide sizes in stock to fit everyone! Try us and see!
- Specialists in hard-to-find sizes & items.



• VISA • MASTERCARD • AMEX

Goldman Bros. INC.
163 South Broadway, Hicksville, N.Y. (516) 931-0441
ONE BLOCK NORTH OF OLD COUNTRY ROAD
Monday-Friday 9 to 9, Saturday 9-6, Closed Sunday

**IS YOUR INCOME
SMALLER THAN
YOUR POTENTIAL?**

Don't be held back. Talk to us.

If you're bright, ambitious and have a strong drive to succeed, our CENTURY 21 office has career opportunities to prove your worth. As a CENTURY 21 sales associate, you can earn up to your maximum potential. We'll give you the training you'd expect from Number 1, the financial tools and top management support. Call us, today!

AMERICA'S NUMBER 1 TOP SELLER, CENTURY 21™
EACH OFFICE IS INDEPENDENTLY OWNED AND OPERATED.
1982 Century 21 Real Estate Corporation as trustee for the NAF
® and TM - trademarks of Century 21 Real Estate Corporation
Equal Housing Opportunity Equal Opportunity Employer

Century 21 JANNACE REALTY
284 OLD COUNTRY RD • HICKSVILLE
935-5113

Mid-Island Herald

Published every Thursday by:
Anton Community Newspapers
132 East Second Street
Mineola, NY 11501 (516) 747-8282

Karl V. Anton, Jr. Publisher
Howard J. Finnegan Asst. Publisher
Michael Skahill General Manager
Janice Manasick Administrative Assistant
Victor E.C. Abate Advertising Mgr.
Harriet E. Heffernan Asst. Adv. Mgr.
Billy Delventhal, Jr. Production Manager
Margaret (Peggy) Sloggett Art Director
Christine Hellmer

Joseph Sovinski Community Events Editor
Teddy Baade Circulation Manager
Mary Mulvihill Proofreading Supv.

OUR NEWSPAPER STAFF

Dennis Abate, Ray Barone, Janet Benoit, Helen Bloom, Darlene Carney, Maria Chessa, Mike Collins, James Conaghan, Jane DeLallo, Shirley Felt, Carole Formis, Vincent Fromm, Paul Gallick, Doug Gaudet, Phyllis Goss, David Goss, Lisa Harlan, Janet Henry, Mary Harkin, Margaret Harkin, Kim Henry, Allan Hughes, Patricia Horner, James Jones, Evelyn Knick, John Lantieri, Rita Laughlin, Adrienne Lee, Elaine Markowitz, Vicki Martin, John Miller, Daniel Moch, Lisa Morale, Patricia Morale, Helen Murphy, Rose Palatino, Ann Tannenbaum, Keri Bally, Lillian Salter, Margaret Sloggett, Peter Sloggett, Diane Singer, Maria Svenson, Thomas Tannenbaum, Todd Tannenbaum, Barbara Tannenbaum, Darlene Vanous, Vella Velland, Christine Weinberg, Stacy Weinberg, Christopher Westman.

We reserve the right not to accept an advertiser's order. Only publication of an advertisement shall constitute final acceptance. We are not responsible for errors in advertisements beyond the cost of space occupied by error.

Member: New York Press Association, American Newspaper Publishers Assn., Suburban Newspapers of America, National Newspaper Association.

Police Report

The Second Precinct has reported the following:

• **January 7.** A house was broken into through a garage side window on Crossbow Lane in Woodbury. The loss is unknown.

• A business on East Mall in Plainview was burglarized. Entry was made through the roof. The loss included a typewriter, a stereo and cash.

• A business on Newton Road in Plainview was broken into through the roof. The loss is unknown.

• **January 8.** A house on Crown Street in Hicksville was burglarized. Entry was gained by prying open a rear window. The loss included jewelry and cash.

• A burglary occurred at a house on Kenneth Street in Plainview. Entry was made through a garage rear window. The loss included a VCR and jewelry.

• **January 9.** A house was burglarized on Knickerbocker Road in Plainview. Entry was made through a garage side window. The loss included a VCR and jewelry.

The Mid-Island Herald

is presently engaged in an extensive mailing program so that newcomers to our area can read our weekly endeavors and become regular subscribers.

Yes!... I want to subscribe to The Mid-Island Herald

NAME

ADDRESS

CITY/STATE/ZIP

PHONE

☐ \$6.50 per year, \$10 per 2 years

☐ \$12 for 3 yrs.

(add \$5. per yr. addresses off LI)

☐ Enclosed is my check/money order.

☐ If not convenient to send check we will bill you.

MAIL TO:

Anton Community Newspapers
P.O. Box 1578, Mineola, LI New York 11501

The Mid-Island Herald

(USPS346-720)

Postmaster: Send address changes to Long Island Community Newspapers, Inc. P.O. Box 1578 Mineola, NY 11501. Entered as second class paid postage at the Post Office at Hicksville, N.Y. and additional mailing offices under the Act of Congress.

Published weekly on Thursdays by Long Island Community Newspapers, Inc., 132 East Second Street, Mineola, NY 11501 (P.O. Box 1578) Phone: (516) 747-8282. Price per copy is 35 cents.

• A burglary occurred at a house on Tioga Drive in Jericho. Entry was gained by prying open a rear door. The loss included jewelry and cash.

• A house on Ontario Avenue in Plainview was burglarized. Entry was made through a garage side window. The loss included figurines and jewelry.

• A house was burglarized on Ava Drive in Plainview. Entry was made through a garage rear door. The loss included a VCR and a TV.

• **January 11.** A cosmetic business on Duffy Avenue was burglarized. Entry was gained by removing the front door lock. The loss included cosmetic machines and cosmetics.

• A computer was stolen during a burglary which occurred at a company on Sunnyside Boulevard in Plainview.

The Eighth Precinct has reported the following:

• **January 5.** A gas station on Newbridge Road was burglarized. Entry was gained by breaking a front window. The loss included \$100 in cash.

• A house on Debora Drive in Plainview was burglarized. Entry was made through a rear window. The loss included assorted jewelry, a VCR and equipment.

• A house was burglarized on Eleanor Lane in Plainview. Entry was made through a rear window. The loss included a VCR.

• A burglary occurred at a Burton Avenue residence. Entry was gained by prying open a rear window. The loss included cash, a 35mm camera, jewelry and a camcorder.

• **January 7.** Two subjects were arrested in Lindenhurst at 9:10 p.m., and charged with the robbery of four stores in Hicksville, Bethpage and Syosset.

A joint investigation by the Major Case and Robbery Squads led to the arrests of the subjects as they were leaving a lodge on Route 109 in Lindenhurst.

Arrested were a 24-year-old Westbury man and a 22-year-old Roosevelt woman. The man is charged with two counts of robbery in the first-degree, one count of robbery in the second-degree and one count of attempted robbery in the second-degree. The woman is charged with one count of robbery in the first degree and one count of robbery in the second degree. Both subjects were arraigned at First District Court in Mineola on Jan. 8.

• A house on Miller Road in Bethpage was burglarized. Entry was gained by breaking open a rear door. The loss included assorted jewelry.

• **January 8.** A house was burglarized on Vera Lane in Plainview. Entry was made through a rear window. The loss included assorted jewelry.

• A burglary attempt was made to a house on Lillian Lane in Plainview. No apparent entry was gained.

• A house on Melony Lane in Plainview was burglarized. Entry was made through a rear window. The loss included a diamond ring. A burglary attempt was made to another house on Melony Lane in Plainview. A rear window was broken but no apparent entry was made.

Community Calendar

Please address all notices of local events to Calendar Editor, 132 E. Second Street (P.O. Box 1578) Mineola, N.Y. 11501 or phone 747-8282. Calendar items must be submitted two weeks prior to the event.

Friday, January 23

• Walden Three, designed to help people develop communication skills, will be meeting at the Plainview Public Library, Room B, at 7 p.m. For information call: 938-9278.

• David Lee Roth in concert. 8 p.m. at Nassau Coliseum, Unioneale.

• Temple Or-Elohim, Jericho, Scholar-Residence Weekend: "A Festival of Sephardic Tradition," Jan. 23-25. Meals, lectures, entertainment. For reservations call: 433-9888, Harriet at 433-9633 or Debbie Franco at 938-3047.

Saturday, January 24

• N.Y. Express vs. Cleveland, 5:05 p.m. at Nassau Coliseum, Unioneale.

• Parents Without Partners, Nassau chapter, first annual snowflake dance at Knights of Columbus, Heitz Place, Hicksville, in honor of the Nassau chapter's 25th anniversary. Homemade Viennese table, lingerie fashion show, door

prizes. Members, 17.50, non-members, \$10. For information call: 783-3630 or 935-7967.

Monday, January 26

• The Institute for Adult Jewish Studies presents a Winter Study Program. 8:30 p.m. at the Manetto Hill Jewish Center, 244 Manetto Hill Rd., Plainview. Dr. David Novak will speak on Israel, the growing divide between the secular and religious communities. Last lecture in a series.

• Levittown Homemakers business meeting, 10 a.m. in Levittown Hall, Levittown Pkwy., Hicksville. Refreshments will be served. New members welcome.

• Hicksville Community Big Swing Band will hold its rehearsal from 7:30 to 9:30 p.m. at the high school, Division Ave. Looking for a lead trombone player. For information call: 935-1175.

• Writers' Club of Hicksville will meet from 7 to 9 p.m. in the Hicksville Library Community Room, 169 Jerusalem Ave.

Tuesday, January 27

• Hockey game: Islanders vs. Winnipeg, 8:05 p.m. at Nassau Coliseum, Unioneale.

• Fund raising activity, 7:45 p.m. at Congregation Shaari Zedek, Old Country Rd. and New South Rd., Hicksville. Refreshments served.

• All Nassau County retirees who worked for a local county or state agency, or are part of the N.Y. State Pension System, are invited to attend the next regular monthly meeting of the Nassau County Retirees Local 919, C.S.E.A., at Levittown Hall, Levittown Pkwy., Hicksville. Guest speaker, Jane Adams, former assistant director of social services, Nassau County. Her topic: "Reverse Mortgages." For information call: 785-8871.

Wednesday, January 28

• Hicksville Board of Education meeting, 8:15 p.m. in the Administration Building, Division Ave., Hicksville.

• Hicksville Kiwanis Club meeting, 12 p.m. at Milleridge Inn, Jericho.

• Hicksville Lions Club meeting, 6:30 p.m. at Lannone's Restaurant, W. John St., Hicksville.

• The Widow and Widowers Interfaith organization, St. Monica's Group, will meet at

8:30 p.m. at the American Legion Hall, 115 South Parkway, Plainview. For information call: 783-7471.

• Parents Without Partners, Nassau chapter, will hold new member orientation at 8:30 p.m. in the Nassau Mall, Island Trees Public Library, Levittown. For information call: 432-6171.

Thursday, January 29

• Fund raising activity, 10:45 a.m. at Congregation Shaari Zedek, Old Country Rd. and New South Rd., Hicksville. Refreshments served.

Friday, January 30

• WWF wrestling, 7:30 p.m. at Nassau Coliseum, Unioneale.

• The Widow and Widowers Interfaith organization, St. Monica's Group, will hold a dance from 9 p.m. to 1 a.m. at the Elks Lodge, 80 E. Barclay St., Hicksville. Admission: \$8. For information call: 783-7471.

Saturday, January 31

• Hockey game: Islanders vs. Hartford, 7:05 p.m. at Nassau Coliseum, Unioneale.

Sunday, February 1

• Ice skating for the disabled, 11:15 a.m. to 12:30 p.m. at Cantiague Park, West John St., Hicksville. For ages 6 and up. Free. For information call: 542-4498. Also takes place Feb. 8.

• Mix media paintings by Will Schroeder are on view through February at Plainview-Old Bethpage Public Library, 999 Old Country Rd., Plainview.

• Handicrafts by Tina Luby are on view through February at Plainview-Old Bethpage Public Library, 999 Old Country Rd., Plainview.

• Bread Dough Designs and Handicrafts Exhibit by Dorothy Klein, on view through February at the Plainview-Old Bethpage Public Library, 999 Old Country Road.

Your worst enemies are not those who disagree with you — they're the ones who pretend to agree with you.

— Frank Clark

An unlimited power to tax involves, necessarily, the power to destroy.

— Daniel Webster

Letters From Our Readers

Letters to the editor are welcomed by the editors and publishers of the Anton Community Newspapers. However, they must follow certain guidelines in order for us to print them: they should be as short as possible; we reserve the right to edit in the interest of space; they MUST be signed (a typed name at the bottom will not suffice); they must include an address and telephone number so that we can verify their authenticity.

We receive many very fine letters which we would like to share with our readers, but we are unable to use them because they are unsigned or have a typewritten name only.

We cannot publish every letter we receive because of space limitations, but we try to present both sides of all issues. Personal attacks and letters considered to be in poor taste will not be printed.

OUR NEWSPAPERS COVER THE HEART OF LONG ISLAND

The circulation of our newspapers has reached a record of 125,000. Our market reaches such far away Gold Coast communities as Great Neck, Roslyn, Manhasset, Glen Cove, Port Washington, and clear out to Huntington.

This extensive network allows you to specifically target your advertising right where you want it. Call today for more details.

NASSAU: Garden City Life • Glen Cove Record • Great Neck Record • Manhasset Press • Oyster Bay Enterprise • Port Washington News • Roslyn News • Westbury Times • Hicksville Illustrated News • Farmingdale Observer • Levittown Tribune • Massapequa Observer • Nassau Illustrated News • Hyde Park • Floral Park Dispatch • Free Elmonor (Elmont) • Jericho Tribune • Syosset Tribune • Mid Island Herald

SUFFOLK: The Long Islander (Huntington) • Northport Journal • East Northport Voice



Circulation audited by U.S. Postal Service

ANTON COMMUNITY NEWSPAPERS OF LONG ISLAND
132 East Second St. • Mineola, New York 11501 • 516-747-8282

CHAPTER 11
"GARBAGE, LITTER AND WASTE"

BEIT ORDAINED, by the Town Board of the Town of Oyster Bay, New York, that Chapter 11, "Garbage, Litter and Waste" of the Code of Ordinances of the Town of Oyster Bay, New York, be and the same is hereby amended as follows:

Chapter 11. Title
DELETE: "Garbage, Litter and Waste" and in its place
ADD: "SOLID WASTE"
Div. I. General Provisions, Sections 11-1 to 11-15
DELETE: entire table of contents and
ADD: in its place the following:
Art. I. General Provisions, Section 11-1 - 11-15
Art. II. Town Solid Waste Collections, Sections 11-16 - 11-45
Art. III. Private Solid Waste Collections, Sections 11-46 - 11-66
Div. II. General Provisions, Sections 11-67 - 11-55
Art. IV. Town Solid Waste Disposal, Sections 11-56 - 11-66
Art. IV. Town Solid Waste Disposal, Sections 11-67 - 11-88
Art. V. Littering, Sections 11-89 - 11-129
Div. III. Public Places, Sections 11-89 - 11-101
Div. 2. In Public Places, Sections 11-103 - 11-118
Div. 3. On Private Property, Sections 11-119 - 11-121
Div. 4. Litter Receptacles in Private Parking Lots, Sections 11-122 - 11-129
Art. VI. Recycling, Sections 11-130 - 11-200
AMEND: Article 1. (RESERVED)
DELETE: title and section numbers in their entirety
ADD: the following title and section:
Section 11-1. Definitions:
For the purpose of this chapter, the following terms shall have the following meanings assigned to them, unless noted otherwise:
Ashes shall mean the residue from the burning of wood, coal, coke or other combustible materials.
Authorized litter receptacle for the purposes of this chapter shall mean a receptacle for litter and a litter storage and collection receptacle larger than ten (10) gallons in volume capacity but less than thirty (30) gallons in volume capacity.
Authorized private receptacle for the purposes of this chapter shall mean a receptacle for litter and a litter storage and collection receptacle, not to exceed thirty (30) gallons in volume capacity.
Biological waste shall mean human bodies, animal bodies or animal parts or blood from human bodies or animal bodies.
Bulky items shall consist of any materials or items longer or wider than four (4) feet, including but not limited to, stoves, furnaces, boilers, water heaters, air conditioning, fence posts or rails longer than four (4) feet, boilers, furnaces, stoves, hot water heaters or other major appliances; household or office furniture; and rubber tires.
Collection vehicle shall mean any area where businesses are located or operating.
Collection vehicle shall mean a vehicle designed, built and used for the purpose of collecting solid waste.
Commissioner of public works shall mean the commissioner of public works or his duly authorized designee.
Garbage shall mean wastes from the preparation of food and serving of food, and market wastes from the handling, storage and sale of produce.
Hazardous waste shall mean a waste which appears on a list or satisfies the criteria promulgated under Article 27 of the New York State Environmental Conservation Law and under section 1004 of the Federal Resource Conservation and Recovery Act of 1976, as amended, which shall include but not be limited to sewage sludge, its concentration, or physical, chemical or infectious characteristics may:
(1) cause or significantly contribute to an increase in the morbidity or mortality of man or animal or incapacitating reversible illness; or
(2) Pose a substantial present or potential hazard to human health or the environment when it is improperly treated, stored, transported, disposed or otherwise managed.
The final determination of whether or not a waste is hazardous shall be made by the commissioner or public works in accordance with the guidelines set forth in Article 27 of the New York State Environmental Conservation Law and the United States Environmental Protection Agency, which establishes criteria for such determination.
Holiday shall mean the day on which the following holidays occur: New Year's Day, New Year's Day, Memorial Day, Independence Day, Labor Day, Thanksgiving Day and Christmas Day.
Industrial Waste as defined in Title of the official Code of Ordinances, Part 36, Section 36-1.3, "Solid Waste Management Facilities" shall mean wastes in liquid, semisolid or solid form that result from industrial or commercial processes, including but not limited to, sludges, oils, solvents, paint, repair and cleaning establishments, which waste include but are not limited to sludges, oils, solvents, spent chemicals and acids. "Sludges" means an acid, semisolid or liquid waste generated from a treatment plant, water supply treatment plant or air pollution control facility. Sludge does not include the treated effluent from a wastewater treatment plant. A hazardous waste is any waste classified as an industrial waste and a hazardous waste for the purposes of this chapter.
Litter shall mean solid waste which is thrown or deposited and which tends to create a danger to health or safety.
Newspaper shall mean a publication made at intervals and distributed at stated intervals and having as its primary purpose news, editorial, advertising and other information of public interest and shall not be construed to mean any magazine or periodical or other paper products of any nature whatsoever.
Open body refuse container shall mean any vehicle or container attached to a vehicle which is capable of carrying solid waste which is open or normally capable of being open on one end or at the top, including but not limited to roll off containers, dumpsters, dump trucks, flatbed trucks and pickup trucks.
Operate shall mean the actual pickup, loading or collection of solid waste.
Park shall mean a park, reservation, playground, beach, or other area or any other public area in the town, owned or used by the town and devoted to active or passive recreation.

number of garbage and rubbish receptacles, meeting the requirements of this article, for the exclusive use of the land or buildings.

(b) Containers for the purpose of separating and placing materials for collection shall be provided by the Town to residents of designated recycling areas. Such containers will remain the property of the town and must be kept in a good and clean condition by such residents. Recycling areas shall be established for any purpose other than as described in this section. In the event that such containers are lost, damaged or stolen, additional containers shall be available from the division.

AMEND: Sec 11-22. Duty of property owners and occupants to place garbage containers in proper locations for collection.

DELETE: heading to said section in its entirety and

ADD: in its place the following:

Sec. 11-22. Duty of property owners and occupants to place containers in proper locations for collection.

DELETE: Subsections (a) and (b) of said section and

ADD: the following:

(a) Residential. It shall be the duty of the occupants of all lands and buildings located in the residential zone to place all waste materials and all containers of garbage and rubbish upon the curbline in front of the premises occupied by them for collection of waste materials by the Town.

AMEND: Section 11-22. Duty of property owners of land and buildings located in business areas of the town to place waste materials upon the nearest curbline of the premises occupied by them for the collection of waste materials.

AMEND: Section 11-22. Duty of property owners when containers may be set out for collection; removal.

DELETE: Section 11-23 in its entirety and

ADD: in its place the following:

Sec. 11-23. Containers for the purpose of separating and placing materials for collection shall be placed for collection before 5:00 PM on the day prior to the scheduled collection date and such containers must be removed from the curbline by 8:00 PM on the scheduled collection date.

AMEND: Section 11-23. Containers for the purpose of separating and placing materials for collection; removal.

DELETE: Section 11-24 in its entirety and

ADD: in its place the following:

Sec. 11-24. Containers for the purpose of separating and placing materials for collection of solid waste at the curbline by a resident in accordance with the provisions of Articles IV or VI of this chapter, such solid waste shall be deemed the property of the town or its duly authorized agent. It shall be a violation of this chapter for any person to place any materials of the town to collect, pick up, remove or cause to be removed, or in any manner interfere with or obstruct any solid waste or portions thereof from being collected by the town.

AMEND: Section 11-25. Garbage and rubbish to be in separate containers.

DELETE: heading to Section 11-25 in its entirety and

ADD: in its place the following heading:

Sec. 11-25. Garbage and rubbish to be in separate containers; recyclable materials in recycling area to be in separate containers.

DELETE: text of Section 11-25 in its entirety and

ADD: the following:

Garbage and rubbish must be placed and maintained in separate containers. Further more, in addition to the above, all recyclable materials shall be placed in separate containers in accordance with the provisions of Article VI of this chapter.

AMEND: Section 11-26. Containers to be water tight and have handles, oil drums prohibited; cleaning.

DELETE: Section 11-26 in its entirety and

ADD: in its place add the following:

Sec. 11-26. Containers to be water tight and have handles; oil drums prohibited; cleaning.

All garbage and rubbish shall be placed in either reusable or single use type containers which shall be water tight and shall be in accordance with the provisions and which shall be kept covered or enclosed at all times. Grease and oil drums are specifically prohibited. The reusable type container shall be equipped with handles and tight fitting covers and shall be kept in good repair and in a clean, neat and sanitary condition at all times. The design and construction of the and Materials used for the single use type containers and the method of the design and construction shall be in accordance with specifications and rules and regulations therefor which shall be established by the commission of public works.

AMEND: Section 11-28. Size and weight of bundles, preparation of paper cartons for collection.

DELETE: Section 11-28 in its entirety and

ADD: in its place the following:

Garbage and rubbish which cannot be readily placed in containers must be placed in boxes or receptacles, securely enclosed. Each box, receptacle or bundle shall not weigh more than fifty (50) pounds. All empty paper cartons shall be flattened and placed in a separate bin or receptacle.

AMEND: Section 11-29. Preparation of hypodermic syringes with needles for collection.

DELETE: Section 11-29 in its entirety and

ADD: in its place the following:

Sec. 11-29. Preparation of certain materials for collection.

(a) all trees, stumps, trunks, branches, roots and other vegetation shall be cut to six inches and length of all trees, stumps, trunks, branches and roots shall be placed in a bag and bundled for collection as rubbish.

(b) all carpeting, rugs and padding shall be rolled and tied in length not to exceed four (4) feet and shall be placed for collection as rubbish.

(c) all household appliances, such as vacuum cleaners, shall be placed in a metal container so secured as to prevent the parts from falling out.

(d) all domestic animals shall be placed in a sealed waterproof container before it is placed out for collection.

(e) refrigerators and freezers are to have their door removed prior to placement at the curb for collection. If the door cannot be removed, the door shall be broken prior to placement at the curb.

AMEND: Section 11-30. Preparation of fecal matter for collection.

DELETE: Section 11-30 in its entirety and

ADD: in its place the following:

Sec. 11-30 Prohibited materials.

It shall be a violation of this section for any person to place any of the following materials out the curb for collection: hazardous waste, industrial waste, pathological waste, biological waste, and

radioactive materials, any liquids, motor vehicles or motor vehicle parts, combustible materials, flammable materials, any pressurized gas cylinders or tanks, any other hazardous materials which the commissioner of public works shall determine does or potentially could jeopardize the safety of town employees.

AMEND: ARTICLE III, PRIVATE SOLID WASTE DISPOSAL.

DELETE: heading to Article III in its entirety and ADD: in its place the following:

ARTICLE III. PRIVATE SOLID WASTE COLLECTIONS. DIVISION I. GENERAL PROVISIONS.

AMEND: Section 11-46, Definition.

DELETE: Section 11-46 in its entirety and ADD: in its place the following:

§ 11-46. As used in this article, the following definitions shall apply:

AMEND: Section 11-47, Permit required for collection, transportation and/or disposal of solid waste types of permits; exception.

DELETE: Section 11-47, subsection (a), paragraph (3) in its entirety and ADD: in its place the following:

(3) A notarized statement as to whether the applicant has engaged in any recycling activities and the amount of materials recycled, and a copy of the February list of the year of application and so, a description of the materials recycled and the amounts of each type of material recycled.

AMEND: Section 11-47, subsection (d), paragraph (1) in its entirety and ADD: in its place the following:

(1) Any other relevant information the town clerk may require.

DELETE: Section 11-47, subsection (e), paragraph (1) in its entirety and ADD: in its place the following:

(1) Deposit. Before a permit may be issued by the town clerk, each applicant shall pay a cash deposit or bond in an amount equal to the cash deposit or bond in the highest monthly charge for use of the town solid waste disposal complex by the applicant during the previous year, but if the applicant has not used the town solid waste disposal complex for the previous year, the cash deposit or bond shall be the amount of \$16,000 (2001 percent of the estimated monthly charges to be incurred by the applicant during the current year. Notwithstanding the foregoing, the minimum cash deposit or bond shall be the amount of three thousand dollars (\$3,000.00) for a type I permit and two hundred fifty dollars (\$250.00) for a type II permit. No deposit will be required for applicants for type III permits, applicants for nonresidential collection permits and permittees and veterinarians who apply for type III permits.

(2) In the event that a permit fee fails to make payment for all town disposal charges within ten (10) days of the date the charges are billed, the town controller may deduct the amount of such charges from the cash deposit to be applied against all amounts then due and owing for use of town disposal facilities.

(3) At no time shall any accumulated town disposal charges remain in cash deposit or bond maintained by the permittee. If such condition occurs, credit privileges shall be suspended until the amount of such charges is paid in full. An additional cash deposit or bond as specified by the controller is provided by the permit fee (1)(k).

(4) The cash deposit or bond shall at all times be maintained by the town clerk in the amount hereinbefore specified and upon the failure of any permittee to maintain said deposit after three (3) days' notice and demand therefor, the town clerk may, without further notice, suspend the permittee in addition, for any violation of this subdivision, such permittee shall be subject to suspension or revocation of the permit and all other penalties provided herein.

DELETE: Section 11-47, subsection (g) in its entirety.

AMEND: Section 11-49, Issuance of town permit and identification tag; replacement permit and identification tag; expiration of identification tag; expiration date of permit.

ADD a new subsection (f) to said Section 11-49 as follows:

Any open or closed waste container used for transportation of solid waste from a facility that generate waste may generate pathological waste or biological waste shall have affixed to its side the name of the facility generating the waste contained in it and contain two (2) inches in height and shall be affixed halfway between the bottom and top of such container and along the end of the container that is closest to the back of the vehicle transporting it.

Any open or closed waste container that shall contain waste that generate or may generate pathological waste shall include but not be limited to medical offices, medical laboratories, nursing homes, surgical centers and hospitals.

AMEND: ARTICLE IV. TOWN DISPOSAL FACILITIES. Section 11-67, Person entitled to use town facilities.

DELETE: heading to Section 11-67 in its entirety and ADD: in its place the following:

§ 11-67. Persons entitled to use the town solid waste disposal complex.

DELETE: Section 11-67, subsection (a) in its entirety and ADD: in its place the following:

(a) Only residents of the Town of Oyster Bay Solid Waste Disposal District shall be entitled to bring or have brought to the town solid waste disposal complex within the Town of Oyster Bay Solid Waste Disposal District to the town solid waste disposal complex. The items that such solid waste may be brought or sent to the town solid waste disposal complex shall be brought to the commissioner of public works. For the purpose of this division and chapter, solid waste which was generated outside the Town of Oyster Bay Solid Waste Disposal District but which was brought to the town solid waste disposal complex as permitted by the State of New York, shall not be considered to be solid waste generated from within the Town of Oyster Bay Solid Waste Disposal District and such is specifically prohibited from being brought or sent to the town solid waste disposal complex.

DELETE: Section 11-67, subsection (b) in its entirety and ADD: in its place the following:

(b) The town board may, by resolution, authorize the State of New York, the County of Nassau and any agency or department thereof or any other governmental agency to bring or send solid waste which was generated from within the Town of Oyster

Continued on Page 14

Continued from Page 13

Bay Solid Waste Disposal District to the town solid waste disposal complex without consideration of fee or for such consideration or fee and upon such terms and conditions as shall be approved by said board.

AMEND: Section 11-68. Hours of operation.
DELETE: Section 11-68 in its entirety and ADD: in its place the following:

The commissioner of public works, subject to the approval of the town board, shall establish the days and hours of operation at the town solid waste disposal complex and may from time to time change such days and hours of operation as is necessary for the orderly delivery and disposal of solid waste.

AMEND: Section 11-72. Fees.

DELETE: Section 11-72, subsection (a) in its entirety and ADD: in its place the following:

(a) (1) The charge of disposing of solid waste at the town solid waste disposal complex shall be two dollars and fifty cents (\$2.50) per one hundred pounds or fraction thereof. Effective August 1, 1987, the charge for disposing of solid waste at the town solid waste disposal complex shall be two dollars and eighty cents (\$2.80) per one hundred pounds or fraction thereof.

(2) There shall be no charge for disposal of recyclable materials provided that such materials are separated from all other types of solid waste and delivered in accordance with the terms and conditions set forth by the commissioner of public works.

(3) Regular broken concrete, sand, loam, clean fill containing no vegetation and other materials as may be designated usable by the commissioner of public works shall be accepted at no charge from any person, regardless of the origin of such material and regardless of whether or not such person has been issued a valid waste disposal permit, when such materials are usable by the town at the town solid waste disposal complex.

(4) Residents who maintain a domicile within the town of Oyster Bay Solid Waste Disposal District who bring rubbish or bulky items to the town solid waste disposal complex for disposal from their homes during times designated for such disposal shall be entitled to dispose of up to one (1) ton of rubbish or bulky items at no charge.

(5) Type II permit holders, in addition to the fee set forth in (1) of this subsection, shall be charged an additional fee of one dollar and ninety five cents (\$1.95) per one hundred pounds or fraction thereof for disposal of solid waste at the town solid waste disposal complex.

disposal complex.

(6) There shall be no charge for solid waste delivered to the town solid waste disposal complex by the town Highway division or by the town Parks department or by any agent of such division or department.

DELETE: Section 11-72, subsection (f) in its entirety and ADD: in its place the following:

(f) Except as otherwise provided herein, the minimum fee for the disposal of solid waste at the town solid waste disposal complex shall be the charge for disposal of one (1) ton of solid waste as determined by subsection (a) of this section.

AMEND: Section 11-73. Prefiling of statements prerequisite to depositing certain materials.

DELETE: Section 11-73 in its entirety and ADD: in its place the following:

Sec. 11-73. Material prohibited from disposal at the town solid waste disposal complex.

It shall be a violation of this section for any person to send, deliver, offer to dispose, dispose or in any way discharge or attempt to discharge any quantity of hazardous waste, industrial waste, pathological waste or biological waste at the town solid waste disposal complex.

AMEND: Section 11-77. Penalties for violation of article.

DELETE: Section 11-77 in its entirety and ADD: in its place the following:

Sec. 11-77. Responsibility for removal of unacceptable wastes from the town solid waste disposal complex.

(a) Any person who violates the provisions of Section 11-73 of this article shall be responsible for the removal and proper disposal of any and all hazardous waste, industrial waste, pathological waste or biological waste left by the person or his agent at the town solid waste disposal complex, or to make arrangements for such removal and proper disposal in a safe and prompt manner in accordance with all applicable laws, rules, regulations and ordinances regarding the transportation and disposal of such waste.

(b) In the event that said hazardous waste, industrial waste, pathological waste or biological waste is mixed with other non-hazardous, non-industrial and non-pathological waste at the time it is sent, delivered, offered for disposal, disposed of, or in any way discharged or attempted to be discharged at the town solid waste disposal complex, the entire load shall be removed in accordance with the provisions of this section.

(c) In the event that such person fails to remove

or make arrangements for the removal of such materials within a reasonable period of time, the commissioner of public works is hereby authorized to remove and dispose of such materials and all expenses incurred by the Town in such removal and disposal shall be the responsibility of the person or persons who sent, delivered, offered for disposal, disposed of, or in any way discharged or attempted to discharge such materials.

ADD: the following sections to Article IV following Section 11-77.

Sec. 11-78. Residue from cleaning of boilers, burners and chimneys prohibited.

It shall be a violation of this ordinance for any person to send, deliver, offer to dispose, dispose or in any way discharge or attempt to discharge any residue, including soot, from the cleaning of oil, kerosene, coal or any other fuel-burning appliance, furnace, burner, boiler, fireplace or stove or from the chimney, stovepipe or flue from such device.

Sec. 11-79. Refusal of materials presenting unusual problems in handling.

The commissioner of public works is hereby authorized to refuse to accept any materials offered for disposal at the town solid waste disposal complex if in his discretion such material or materials present unusual problems in the handling, processing, shipping or disposal of such material or materials.

Sec. 11-80. Proof may be required of non-toxicity of certain materials.

Where a reasonable basis exists for the belief that a material disposed of or offered for disposal at the town solid waste disposal complex contains or may contain a hazardous waste, the commissioner of public works is hereby authorized to require that the person who disposed of or offered to dispose of such materials have such material tested for its toxicity content by an independent laboratory in accordance with testing procedures and protocols approved by the U.S. Environmental Protection Agency and/or the N.Y.S. Department of Environmental Conservation. Such testing shall be at the sole expense of the person who disposed of or offered to dispose of such material.

Sec. 11-81 to 11-87 Reserved.

Sec. 11-88. Penalties.

In addition to subjecting a permit issued pursuant to this chapter to a suspension or revocation, any person committing an offense against this article shall be guilty of a violation. Such an offense shall be punishable by a fine not exceeding one thousand dollars (\$1,000.00) or imprisonment for not more than fifteen (15) days, or both such fine and imprisonment.

AMEND: ARTICLE V. LITTERING DIVISION

IN GENERAL.

DELETE: heading to Division I in its entirety, and ADD: in its place the following heading:

DIVISION I. GENERAL PROVISIONS.

AMEND: Section 11-89. Definitions.

DELETE: Section 11-89 in its entirety and ADD: in its place the following:

Sec. 11-89. Reserved.

DELETE: Section 11-122 in its entirety and ADD: in its place the following:

Sec. 11-122. Reserved.

AMEND: ARTICLE VI. NEWSPAPER

RECYCLING.

DELETE: title to Article VI in its entirety and ADD: in its place the following:

ARTICLE VI. RECYCLING.

DELETE: Section 11-130 in its entirety and ADD: in its place the following:

Sec. 11-130. Reserved.

DELETE: Section 11-131 in its entirety and ADD: in its place the following:

Sec. 11-131. Acceptance of newspapers at town solid waste disposal facility.

(a) It shall be a violation of this section for any person to dispose of solid waste at the town solid waste disposal complex which contains a mixture of newspapers and other types of solid waste.

(b) Separated newspapers shall be disposed of in a manner to be prescribed by the commissioner of public works.

AMEND: Section 11-134. Penalties.

DELETE: Section 11-134 in its entirety and ADD: in its place the following:

Sec. 11-134. Establishment of recycling areas.

(continued on page 15)

Antoni's

• RETIREMENT PARTY
• PRIVATE PARTY
• SHOWER PARTY
• ENGAGEMENT PARTY
• REUNION PARTY

COMPLETE CATERING FACILITIES

Formerly Old Country Manor
154 OLD COUNTRY RD., HICKSVILLE

CALL FOR SPECIAL MON. THUR. PRICE

OV1-3300

Have you considered

REFINANCING

your present mortgage?

Low rates, No points

call Jane

TOPPER LANE FUNDING CORP.

284 Old Country Road, Hicksville, NY

935-1414

Your Better Health

SCOTT W. EVANTER, D.C.

SPORTS & CHIROPRACTIC

Many amateur and professional athletes are sidelined with injuries that could be avoided. Others sit it out on the bench because their injury just doesn't seem to respond to ordinary treatment. Still others are playing but at less than their peak efficiency simply because their structural system is not balanced.

The chiropractor knows that the spine must maintain a normal forward curve (neck) and lumbar (low back) curve. If a person loses these normal curves whether it is from:

- 1-car accidents
- 2-stress
- 3-injuries and trauma through ones life
- 4-bad sleeping, standing, sitting habits, etc.

Vertebral subluxations of the spine occur leaving the person much more susceptible to injuries.

Chiropractic considers the human as an integrated being, giving special attention to spinal mechanics and neurological, muscular and vascular relationships. It is a natural health care method that stresses the importance of keeping all the systems of the body functioning efficiently so the player enjoys peak performance, a minimal injury risk and fast recuperative powers.

Chiropractic Care for athletes consist of specific 'key' adjustments (repositioning vertebrae by hand) to:

1. reduce susceptibility to injuries and muscle spasms.
2. increase muscle function, joint mobility and body balance.
3. increase nerve potential.
4. restore normal body function and general health.

To enjoy a sport whether it be on the amateur or professional level, a participant must be alert. Chiropractors are dedicated to keeping the athletes physically fit and conscious of his/her structural health.

THE EVANTER CHIROPRACTIC CENTER

197 Robbins Lane, Syosset, NY 11791
(516) 822-0993

OFFICE HOURS
MON. WED. FRI. 10:1 & 3:30-7:30
TUE. 3:30-7:30, SAT. 10-12

Dr. Scott W. Evanter, Chiropractor
David S. Goughman, M.A., R.D., Registered Nutritionist
Lorella Holick, Chiropractic Asst.

DONOVAN REPORT

REAL ESTATE

Karen Donovan

GET LOST

When your real estate agent brings a prospective buyer to see your house do you: (a) tag along with broker and buyer, pointing out what you feel are your home's best features; (b) barter yourself in your kitchen; or (c) find some reason to leave and let your agent do the showing and selling?

Truth is (c) should be the right answer. The smart home seller simply gets out of the way. A prospective buyer feels constrained when the owner is around, unable to look carefully, hesitating to make any objections. It's very important for the prospect to feel free to voice concerns so that the real estate professional can answer them, turning

each response into a sale argument. And the prospect needs to feel his way into the house, imagining his own furniture, his own family, in place of yours. The homeowner's enthusiastic comments, however well meant, can get in the way and trip up the sale.

If you've been thinking of a career change & are interested in getting into Real Estate - call Karen now! No experience needed, flexible hours, training classes now forming.

DONOVAN REALTY

935-4774

64 JERUSALEM AVE.

HICKSVILLE, N.Y.

YOUR GREAT EVENINGS DESERVE AN ENCORE.

Great evenings are often a celebration of an event. A birthday. An anniversary. A new job. But great evenings shouldn't have to wait for a reason. Just the two of you, together, is great enough.

Celebrate your great evenings at Encore. Our continental menu offers a classic variety of selections with a touch of Northern Italy. Our atmosphere is one of subtle elegance with more than a touch of romance.

Being together. Now that's worth an encore.

Encore

"A Restaurant Worth Repeating"

Open for lunch and dinner.
Monday - Saturday
Call (516) 231-1100 for Reservations

Sheraton Smithtown

The hospitality center of Long Island
at Vanderbilt Motor Parkway (Exit 5)

SHOE E

Substan

Limited

SHOE E

subscri

ledged b

general

ified in

Clerk's

22, 1986

Name

Limited

SHOE B

409 Sou

Plainvie

Its' busi

the busi

operati

selling

The ter

is from

twelve

Decembe

contrib

partner

limited

shall no

such a

tions to

partner

time to

by the

The n

place o

eral pa

Li

409 So

Plainvi

The na

dehce o

is:

Rich

7

East H

The sh

compe

income

partne

son of

(continued from page 14)

The commissioner of public works, with the approval of the town board, may create and establish one or more recycling areas within the town for the purpose of facilitating a mandatory curbside source separation recycling program for the collection of recyclable materials in addition to discarded newspapers.

ADD: a new Section 11-135 as follows:
Sec. 11-135. Materials considered to be recyclable materials.

Materials considered to be recyclable materials shall include but not be limited to those defined in Article I, Section 11-4 of this Chapter. The commissioner of public works may in his discretion allow from time to time those materials subject to this section if market conditions so warrant. In the event that the commissioner of public works does modify the materials subject to this section, he shall cause reasonable notice of such action to be given to all persons affected thereby.

ADD: a new Section 11-136 as follows:
Sec. 11-136. Preparation of recyclable materials for collection within recycling areas.

(a) It shall be the responsibility of each homeowner or occupant within the town's recycling areas to ensure that all recyclable materials are properly separated from other discarded materials and are cleaned or otherwise prepared for collection in accordance with this article.

(b) All recyclable materials, including newspapers, shall be placed in recycling containers provided for that purpose by the town. In the event that the amount or size of the recyclable materials exceeds the capacity of the designated containers, the excess recyclable materials shall be placed in separate containers and placed alongside the designated containers when placed at the curb for collection.

(c) Each homeowner or occupant shall be entitled to one additional recycling container at no charge from the town division of sanitary collection upon a showing of need. Additional requests may be granted at the discretion of the superintendent of sanitary collection. Advance arrangements must be made for all additional recycling containers.

(d) All recyclable materials shall be rinsed clean of all food and other particles and all labels are to be removed. In addition, all bottles and jars are to have any metal rings on their necks removed.

(e) Newspapers shall be prepared for collection in accordance with the provisions set forth in Sections 132 and 133 of this article.
ADD: a new Section 11-137 as follows:
Sec. 11-137. Collection of recyclable materials.

The commissioner of public works is hereby authorized to establish collection schedules and routes for the collection of recyclable materials and to cause reasonable notice of the requirements thereof to be given to the residents of the recycling areas. Collection of newspapers shall be in accordance with the provisions heretofore set forth in this article.

ADD: a new Section 11-138 as follows:
Sec. 11-138. Used Motor Oil.
Notwithstanding any other provision of this article or chapter, used motor oil shall only be disposed of by delivery to a service station which is required under state law to accept such material or by depositing such material in any waste oil recycling tank or container maintained for that purpose by the town.

ADD: the following sections:
Sec. 11-139 to 11-199 (Reserved).
ADD: a new Section 11-200 as follows:
Sec. 11-200. Penalties.

a. In the event that an owner or occupant of a dwelling within the town recycling area fails to separate and prepare recyclable materials for collection in accordance with the provisions of this article after being given reasonable notice of these

requirements, collection of all solid waste from such dwelling will be suspended until such time as the owner or occupant can demonstrate compliance with the provisions of this article. Such compliance can be demonstrated by placing properly separated and prepared recyclable materials at the curb in one or more designated recycling containers on the next scheduled collection date for such recyclable materials.

(b) In addition to the provisions of subsection (a) above, any person committing an offense against this article, or any provision or section thereof, shall be guilty of a violation. Each day that such violation exists shall constitute a separate offense. Such an offense shall be punishable by a fine and/or imprisonment in accordance with the following schedule:

1. Upon conviction for a first offense under this article, a fine not exceeding one hundred dollars (\$100.00) or imprisonment for not more than fifteen (15) days, or both such fine and imprisonment.

2. Upon conviction for a second offense under this article within five (5) years of a previous conviction for a like offense, a fine of not less than fifty dollars (\$50.00) nor more than one hundred fifty dollars (\$150.00) or by imprisonment not to exceed fifteen (15) days, or by both such fine and imprisonment.

3. Upon conviction for a third offense or subsequent offense under this article within five (5) years of two previous convictions for a like offense, a fine of not less than one hundred (\$100.00) nor more than two hundred fifty dollars (\$250.00) or by imprisonment not to exceed fifteen (15) days, or by both such fine and imprisonment.

c. Notwithstanding subsections (a) and (b) of this section, the disposal of solid waste containing newspapers by any person whatsoever shall be deemed a violation punishable by a fine of not less than fifty dollars (\$50.00) nor more than seven hundred fifty dollars (\$750.00) or imprisonment for not more than fifteen (15) days, or by both such fine and imprisonment for each such offense in addition to subjecting any waste removal permits held by such person to suspension or revocation.

These amendments shall be effective on February 1, 1987.

Dated: Oyster Bay, New York
January 13, 1987

BY ORDER OF THE TOWN BOARD
OF THE TOWN OF OYSTER BAY

Joseph Colby
Supervisor
Ann R. Ocker
Town Clerk

STATE OF NEW YORK
COUNTY OF NASSAU ss:
TOWN OF OYSTER BAY
I, ANN R. OKKER, Town Clerk of the Town of Oyster Bay, and custodian of the Records of said Town, DO HEREBY CERTIFY that I have compared the annexed amendments to the Code of Ordinances of the Town of Oyster Bay adopted by the Town Board on January 13, 1987 (Amended Chapter 11, "GARBAGE, LITTER AND WASTE"), filed in the Town Clerk's Office, and the same is a true and correct transcript thereof, and of the whole of such original.

In Testimony Whereof, I have hereunto signed my name and affixed the seal of said Town this 14th day of January, 1987.

Ann R. Ocker
Town Clerk
122-87-1T-#1 77 JERICHO
01-22-87-1T-#1-37 Mid Island
01-22-87-1T-#1-37 Syosset

LEGAL NOTICE RAINBOW NEWS "2 COMPANY"

One Media Crossways, Woodbury, N.Y. Substance of Certificate of Limited Partnership filed in Nassau County Clerk's Office Oct. 27, 1986. Business: Create and originate a regional news service. General Partner: Charles F. Dolan, Cove Neck Road, Cove Neck, N.Y. Limited Partner: Contribution and Share of Profits: Cablevision Systems Corporation, One Media Crossways, Woodbury, N.Y., \$100,000. Term: Until December 31, 2075 unless sooner terminated. No additional contributions are required to be made. Contributions returned only upon dissolution or upon the unanimous written consent of all the partners. Limited partner may not substitute any assignee in his place. No right given to admit additional limited partners without the written consent of the limited partner. No priority among limited partners. Upon the death, retirement or insanity of a general partner, the remaining partners may elect to continue the business. No limited partner may demand and receive property other than cash in return for his contribution. (S-50-2-13-87)

Each limited partner is given the right to substitute an assignee as contributor in his place, provided that the assignment is approved by the general partner and that the assignment is in conformity with the terms of the existing partnership agreement entered into between the general partner and the limited partner. No limited partner shall have any priority over other limited partners, as to compensation or as to compensation by way of income.

In the event that the general partner ceases for any reason to be the general partner, including by reason of dissolution or bankruptcy of the general partner, the limited partner(s) shall have the right to continue the business of the partnership under the same name in conjunction with any other person or persons that the limited partners holding 66 2/3% interest in the partnership may designate to be the new general partner, provided the person or persons chosen shall meet the net worth requirements of the existing partnership agreement entered into between the general partner and the limited partner(s) and shall agree to perform all obligations of such agreement.

Limited partners have no right to demand to receive property other than cash in return for contributions. (S-F-45-2-13-87)

LEGAL NOTICE
BROOKRIDGE ASSOCIATES - Substance of Certificate of Limited Partnership signed and acknowledged by all of the partners and filed in the Nassau County Clerk's Office on December 17, 1986. Name and principal office in the partnership is Brookridge Associates, c/o First Stratford Corporation, 410 Jericho Turnpike, Jericho, New York 11753. Its business is to purchase, own, operate, lease and sell residential real property. The term of the partnership is 60 years from the date of filing of the Certificate in the Nassau County Clerk's Office. The names and residences of the general partners, of the limited partners, and the cash contributions are as follows:

General Partners: First Stratford Corporation, 410 Jericho Turnpike, Jericho, New York 11753 and Barbara Weiss, Whitehaven, Route 25A, Old Brookville, New York 11545 cash contributions \$500.00 each. Limited Partner: Thomas G. Rund, 251 Tahluh Lane, West Islip, New York 11795, cash contribution of \$100.00.

No other property is contributed and no additional contributions are agreed to be made by the limited partner. The general partners may admit additional limited partners totaling no more than 35, upon payment of the sum of \$33,000 per unit for a total of not more than 10 limited partner units. Upon contribution for a total of 10 such units, the present limited partner shall resign and receive a return of his capital contribution. No limited partner shall have priority over any other limited partner(s) as to contributions or compensation by way of income. The remaining general partner or partners may continue the business upon death, retirement or insanity of a general partner. There is no right of any limited partner to demand or receive property other than cash for his contribution. (J-33-2-6-87)

LEGAL NOTICE

PEACE RIVER ASSOCIATES - Substance of Certificate of Limited Partnership signed and acknowledged by all of the partners and filed in the Nassau County Clerk's Office on December 26, 1986. Name and principal office in the partnership is Peace River Associates, c/o First Stratford Corporation, 410 Jericho Turnpike, Jericho, New York 11753. Its business is to purchase, own, operate, lease and sell residential real property. The term of the partnership is 60 years from the date of filing of the Certificate in the Nassau County Clerk's Office. The names and residences of the general partners, of the limited partners, and the cash contributions are as follows:

General Partners: First Stratford Corporation, 410 Jericho Turnpike, Jericho, New York 11753 and Barbara Weiss, Whitehaven, Route 25A, Old Brookville, New York 11545 cash contributions \$500.00 each. Limited Partner: Thomas G. Rund, 251 Tahluh Lane, West Islip, New York 11795, cash contribution of \$100.00.

No other property is contributed and no additional contributions are agreed to be made by the limited partner. The general partners may admit additional limited partners totaling no more than 35, upon payment of the sum of \$33,000 per unit for a total of not more than 10 limited partner units. Upon contribution for a total of 10 such units, the present limited partner shall resign and receive a return of his capital contribution. No limited partner shall have priority over any other limited partner(s) as to contributions or compensation by way of income. The remaining general partner or partners may continue the business upon death, retirement or insanity of a general partner. There is no right of any limited partner to demand or receive property other than cash for his contribution. (J-33-2-6-87)

tional limited partners totaling no more than 35, upon payment of the sum of \$30,150 per unit for a total of not more than 8 limited partner units. Upon contribution for a total of 8 such units, the present limited partner shall resign and receive a return of his capital contribution. No limited partner shall have priority over any other limited partner(s) as to contributions or compensation by way of income. The remaining general partner or partners may continue the business upon death, retirement or insanity of a general partner. There is no right of any limited partner to demand or receive property other than cash for his contribution. (J-33-2-6-87)

LEGAL NOTICE
ORANGEMONT ASSOCIATES - Substance of Certificate of Limited Partnership signed and acknowledged by all of the partners and filed in the Nassau County Clerk's Office on December 26, 1986. Name and principal office in the partnership is Orangemont Associates, c/o First Stratford Corporation, 410 Jericho Turnpike, Jericho, New York 11753. Its business is to purchase, own, operate, lease and sell residential real property. The term of the partnership is 60 years from the date of filing of the Certificate in the Nassau County Clerk's Office. The names and residences of the general partners, of the limited partners, and the cash contributions are as follows:

General Partners: First Stratford Corporation, 410 Jericho Turnpike, Jericho, New York 11753 and Barbara Weiss, Whitehaven, Route 25A, Old Brookville, New York 11545 cash contributions \$500.00 each. Limited Partner: Thomas G. Rund, 251 Tahluh Lane, West Islip, New York 11795, cash contribution of \$100.00.

No other property is contributed and no additional contributions are agreed to be made by the limited partner. The general partners may admit additional limited partners totaling no more than 35, upon payment of the sum of \$251,720 per unit for a total of not more than 1 limited partner unit. Upon contribution for a total of 1 such unit, the present limited partner shall resign and receive a return of his capital contribution. No limited partner shall have priority over any other limited partner(s) as to contributions or compensation by way of income. The remaining general partner or partners may continue the business upon death, retirement or insanity of a general partner. There is no right of any limited partner to demand or receive property other than cash for his contribution. (J-33-2-6-87)

RULAND HOLDING ASSOCIATES
c/o Edward Blumenfeld, 6800 Jericho Turnpike, Syosset, New York 11791. Substance of Certificate of Limited Partnership filed in Nassau County Clerk's Office on January 2, 1987. Term: To December 31, 2042 unless sooner terminated. Business: To acquire, own and operate real property and interests in real property. General Partner: Edward Blumenfeld, 7 The Dogwoods, Roslyn Estates, New York. Limited Partners and Cash Contributions: Susan Blumenfeld,

The Dogwoods, Roslyn Estates, New York, \$50.00; and Edward Blumenfeld, 7 The Dogwoods, Roslyn Estates, New York, \$40.00. The limited partners receive 90% (pro-rata) of the profits or other compensation by way of income. The general partner, in his discretion, may admit or permit the substitution of limited partners. On the death, retirement or insanity of a general partner, the remaining general partner or partners have the right to continue the business and, if there shall be no remaining general partner, the limited partners may appoint a general partner who shall then have such right. (S-31-2-13-87)

LEGAL NOTICE
CAMBRIDGE ASSOCIATES - Substance of Certificate of Limited Partnership signed and acknowledged by all of the partners and filed in the Nassau County Clerk's Office on December 17, 1986. Name and principal office in the partnership is Cambridge Associates, c/o First Stratford Corporation, 410 Jericho Turnpike, Jericho, New York 11753. Its business is to purchase, own, operate, lease and sell residential real property. The term of the partnership is 60 years from the date of filing of the Certificate in the Nassau County Clerk's Office. The names and residences of the general partners, of the limited partners, and the cash contributions are as follows:

General Partners: First Stratford Corporation, 410 Jericho Turnpike, Jericho, New York 11753 and Barbara Weiss, Whitehaven, Route 25A, Old Brookville, New York 11545 cash contributions \$500.00 each. Limited Partner: Thomas G. Rund, 251 Tahluh Lane, West Islip, New York 11795, cash contribution of \$100.00.

No other property is contributed and no additional contributions are agreed to be made by the limited partner. The general partners may admit additional limited partners totaling no more than 35, upon payment of the sum of \$34,600 per unit for a total of not more than 10 limited partner units. Upon contribution for a total of 10 such units, the present limited partner shall resign and receive a return of his capital contribution. No limited partner shall have priority over any other limited partner(s) as to contributions or compensation by way of income. The remaining general partner or partners may continue the business upon death, retirement or insanity of a general partner. There is no right of any limited partner to demand or receive property other than cash for his contribution. (J-34-2-6-87)

Did
You Ever
Think
How Much
It Costs
NOT
To Advertise

SHOE BOX ASSOCIATES

Substance of Certificate of Limited Partnership of SHOE BOX ASSOCIATES subscribed and acknowledged by all partners, both general and limited, and filed in Nassau County Clerk's Office on December 22, 1986.

Name and location of Limited Partnership is: SHOE BOX ASSOCIATES, 409 South Oyster Bay Road, Plainville, New York 11803. Its business is to engage in the business of leasing and operating a retail store for selling shoes to the public. The term of the partnership is from the present date until twelve o'clock noon, December 31, 2010. The contribution of each limited partner is \$10.00. Each limited partner may (but shall not be obliged to) make such additional contributions to the capital of the partnership as may from time to time be agreed upon by the general partner.

The name and principal place of business of the general partner is:

Lit Shoe Box, Inc.
409 South Oyster Bay Road
Plainville, New York 11803
The name and place of residence of the Limited Partner is:

Richard Kirschenbaum
78 Woods Drive
East Hills, New York 11576
The share of profits or other compensation by way of income which each limited partner shall receive by reason of his contribution is

99%.

Each limited partner is given the right to substitute an assignee as contributor in his place, provided that the assignment is approved by the general partner and that the assignment is in conformity with the terms of the existing partnership agreement entered into between the general partner and the limited partner. No limited partner shall have any priority over other limited partners, as to compensation or as to compensation by way of income.

Limited partners have no right to demand to receive property other than cash in return for contributions. (S-F-45-2-13-87)

The Puzzle Page

The Puzzle Page

A regular feature of The Anton Papers:
East Northport Voice, Garden City Life, Glen Cove Record Pilot, Great Neck Record, Hicksville Illustrated News, The Long-Islander, Manhasset Press, Northport Journal, Oyster Bay Enterprise-Pilot, Port Washington News, Roslyn News and Westbury Times.

CROSSWORD

By Jo Paquin

(solution next week)

PREMIER CROSSWORD / By Jo Paquin

Star Gazing

KidSpot SOLVE THE REBUS BY WRITING IN THE NAMES OF THE PICTURE CLUES AND ADDING OR SUBTRACTING THE LETTERS.

HOW MUCH MONEY
THE WEALTHY
UNCLE LEFT WHEN
HE DIED.



KidSpot CONNECT THE NUMBERED DOTS TO MAKE A PICTURE. TO FIND ITS NAME, PUT THE FIRST LETTER OF EACH NUMBERED DRAWING IN THE BOXES BELOW.

AUSSIE "TEDDY"
BEAR.



1 2 3 4 5

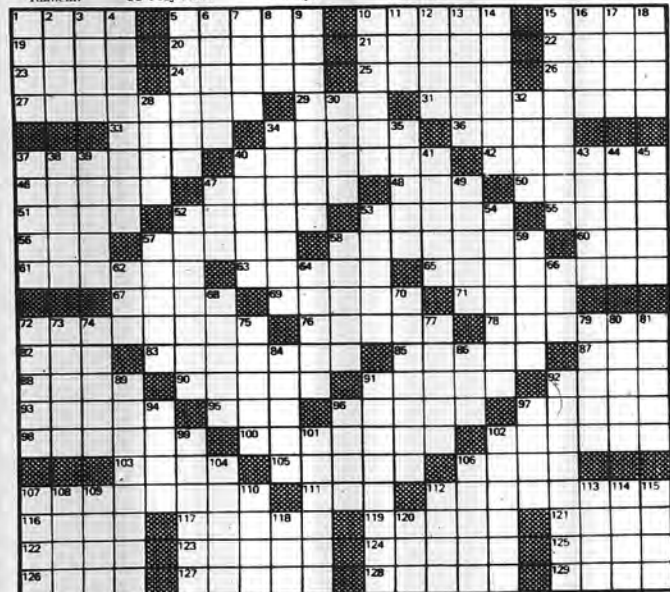
Answer to Sunday Crossword Puzzle No. 243 published today.

ITCH SIRUP STARS BOIL
RULE ARADA PUREE ELBA
ETAL TENON IDIOM HEAP
DUMPLING COCOA ONIONS
IONA WAVER GLEN
STINGS BAKES GRINDERS
TONGS LATER CRANE TOP
ORTS BUSTS GUAVA THAI
RTE SALTS POPPY TOAST
MERINGUE MARIE MOUNTS
CEES SALAD PINT
CEREAL MOREL WINESAPS
HEARD PORTS TINTS VAT
ARMS PARTY PONES BANE
RIP ROSES DATED BRINE
DESSERTS CURES FOOLED
INKY BEAMS BLOC
GARLIC BELLE BLANCHES
ALOE HORSE STEAK OISE
STUN OSIER AWAKE LANE
POET PATTY NONES ISER

Answer to Sunday, Jan. 11 Cryptquip:
THE UNUSUAL MARATHONER STOPPED RUNNING
IN ORDER TO GET MARRIED; SAID, "A MISS IS AS
GOOD AS A MILE."

ACROSS
1 South African language
5 Tee or polo follower
10 Blasphemous
15 Lhasa priest
19 Actress Bancroft
20 Bobby Russell hit
21 Spanish city
22 Sister of Ares
23 Joseph Brodsky
24 Skull bulge
25 "I'm Adam"
26 Texas city
27 "M*A*S*H" star
29 Go off the deep end
31 Hungarian leading lady
33 Singer Guthrie
34 Revolve a legacy
36 Homophone for sleigh
37 Punctuation marks
40 He was "Lou Grant"
42 Herons
43 Modern ruler
47 British prisons
48 Toddler
50 Reddish-brown
51 Rodents of Hamelin
52 Tote
53 Lukewarm
55 Indo-Chinese language
56 Author Levin
57 Mexican dish
58 "10" star
60 California
61 Rocky of filmland
63 Lewis Carroll creature
65 "Pillow Talk" star
67 Egyptian performer
69 "The Beret"
71 Location
72 "April Love" singer
76 Punjab princess
78 Signify
82 Japanese vegetable
83 American actress
85 "there is no greater disaster than"
87 Mortar
88 City on the Kama
90 Wise men
91 Buckets
92 Swedish form of Laurence
93 Entreaties
95 Cozy room
96 Surfeited
97 Eagle's home
98 American lawyer-politician
100 Savers
102 Attack
103 Three, in Bonn
105 Linden trees
106 Jewish month
107 Dutch-born actress
111 Edmond O'Brien film, 1949
112 "Our Miss Brooks" actress
116 Yugoslavian measure
117 Stiller and orange
119 Kind of
121 Lady Chaplin
122 French novelist
123 Negative pole
124 Richard of "Three's Company"
125 Envelop
126 Parisian donkeys
127 City in Michigan
128 "Struggled" (Rand novel)
129 Entitle
DOWN
1 Goodbye

2 Indigo plant
3 Pilaster
4 Noted character actor
5 Pitchman's confederates
6 Role for John Wayne in 1953
7 Dolphin genus
8 Vintage car
9 She's Mary Beth Lacey
10 Neighbor of Trenton, N.J.
11 Grape
12 Carnival attraction
13 Serbs and Croats
14 Mexican dish
15 He was "Young Dr. Kildare"
16 Semite
17 Marmoset
18 Hebrew lyre
28 Sandarac tree
30 Role for Robert Stack
32 Jokes
34 Worshipping Indians
37 Early West Indian
38 Kate, British leading lady
39 It might be precious
40 Holliman and namesakes
41 Worked as a cowboy
43 Ancient Jewish vestment
44 Coronet
45 Actress Duncan
47 Merry, in Marseilles
49 Novices
52 Soft leather
53 Keepsake
54 Riddle
57 "The Money" (1986 movie)
58 Classical guitarist Julian
59 Manipulated checks
62 Persian title
64 Tapestry
66 D.C. denizen
68 Inward
70 Nullifies
72 Child's pet
73 Rogers St. Johns
74 Actress
75 Happily expectant
77 American Indians
79 She starred in "The Quiet Man"
80 Japanese gateway
81 Flop on wheels
84 Cvet's cousin
86 Old times; archaic
89 "I Believe in Music" singer
91 "Put Your Head on My Shoulder" singer
92 Big band leader
94 Helot
96 City in New York
97 Site of Nepal
99 Petty officer
101 U.S. Navy
102 Family cars
103 White poplars
104 Early inhabitants of Britain
106 Genus of grasses
107 Hindu legendary hero
108 Sacred image
109 Syllable with book or worth
110 Salute
112 Wicked
113 David Copperfield's wife
114 City in Judah
115 Back of the neck
118 Caviar
120 High, in music



244

Average time of solution: 58 minutes.

CRYPTOQUIP

1-18

1 D G I Y G A P E K G A H X T E E S N E D T W S R N Y S J G H
H A G A P E K G A A W K I G K A H N W G A Y D W I B Y V R G K I
X P D X Y V H A G K X W

Today's Cryptquip clue: A equals T
© 1987 King Features Syndicate, Inc.

Service Guide

Mailed To
55,000
Homes

Call
747-
8282

Accounting & Taxes

CPA Business & Personal
Accounting, Tax Preparation, Financial Planning & General Consultation, Qualified, Licensed, Practitioner, Reasonable Rates.
CALL Andrew L. Sunkin-CPA 852-0633

TAX ATTORNEY ACCOUNTANT
Individual/Business Taxes & Accounting, Estate & Tax Planning under the new law. 25 Years Experience.
EDWARD J. SHAPIRO
516-629-9080

TAXES
CPA (6 yrs Big 8 exp), Lawyer handles variety of tax problems and returns. Reasonable Rates.
PAUL McDUGAL
488-6656

Air Duct Cleaning

DIRTY Air Ducts from Heating systems blow a constant stream of dusty, sooty, germ laden air to your premises. Our Truck Mounted vacuum thoroughly cleans Air.
Omni-Vac
758-0967/718-782-1112

Asphalt Sealing

BLACKTOP REPAIRS
Specializing in pothole repairs & protective sealcoating. Protect Now-Before Winter! Heavy duty, industrial quality sealer. All work expertly done & guaranteed. Before hiring any contractor, consult with the Dept. of Consumer Affairs. Free Estimates. Lic. Insured. Residential/Commercial.
ASTRO ASPHALT
757-7770

Attorneys

NEIL H. ACKERMAN
Bankruptcy and Commercial Law
114 Old Country Rd.
Suite 152
Mineola, NY 11501
747-0055

Automotives

AUTO RESTORING
Complete Interiors
Body Work - Paint - SAVE THOUSANDS FIX YOUR VALUABLE OLDER CAR
Call Rayco
271-8000
20 West Jericho Tpk, Hunt

Bathrooms

Repairs & Installations.
Tubs, Toilet, Vanities
Kitchen Sink, Heating, Hot Water Heaters
No Job Too Small
Free Estimates.
G. BUNCE
676-8442

Carpentry

Alterations Dormers Extensions Repairs Bathrooms
E.J. Lamas Construction Corp.
Insured-Licensed in Nassau & NYC
Port Washington
POT-0347

Carpenter

Licensed Large and Small Jobs
Repairs, Dormers, Alterations.
R. WEBBER
676-6628
after 6 p.m.

CARPENTRY

• Remodeling • Dormers • Extensions • Decks • Windows • Trim Work, etc.
Free Estimates
All Professional Work
Call: BARRY
(718)634-7077

New Construction
Renovation - Specializing
Custom Trim, Storm Drs.
Replacement Windows,
Oak Floors, Extensions,
Dormers, Baths, Kitchens
SABRINA WOODWORKING
427-3252
Licensed & Insured

Chimney Sweeps

CHIMNEY MAGICIAN
Certified Sweeps
FREE Inspections
Senior Discounts/Military
Cleaning Discounts (Member
of NY and NATI Outlets)
ANIMALS REMOVED
Outlets, Fireplaces-Stoves-Oil
Burner & Gas Burner
Chimneys Cleaned about
mess. (Life Time Stainless
Steel Rain Caps)
Cement Work
Insured/Licensed
333-1010
No. H0700530000,
Visa/Mastercard

Cleaning Service

Cap't. Cleaning Corp.
LET US GIVE YOU A HAND
Complete General
Cleaning
Weekly/Bi-Weekly/Monthly
Residential & Commercial
WE DO IT ALL
References Available
516-872-8002

Counseling

PSYCHOTHERAPIST
Professional Counseling
provided by Psychotherapist
specializing in anxiety,
depression, & substance
abuse. Sliding scale.
By Appt. only
516-676-2436
Joseph T. Quillette, MPS

COUPLES COMMUNICATION WORKSHOP

BECAUSE MARRIAGES ARE NOT MADE IN HEAVEN
If you have a significant
relationship you want to
strengthen, chances of suc-
cess could be enhanced by
a workshop to learn com-
munication, conflict, reso-
lution, and other techniques
for a better relationship.
FAMILY AND MARITAL
THERAPY FOR INDIVIDUAL
CASES CAN ALSO BE ARRANGED
For information Call
516-351-7030

PSYCHOTHERAPY available at moderate fees.

THE GREAT NECK CONSULTATION CENTER
serving Nassau & Queens for
30 years, offers treatment to
individuals, couples, families,
adolescents & children.
225 Middle Neck Road
Great Neck, New York
For information Call
516-482-3750

Desserts

GOURMET DESSERTS
Now Available For Your
Next Party or Catered Affair
As You Like It
FREE DELIVERY
Call
226-7377

Dog Grooming

THE GENTLE GROOMER
Professionally Certified Dog
Care-Bath, Nails Clipped, Ears
Cleaned, Hair Cuts. No Extra
Charge for Flea & Tick Baths.
Pick Up & Delivery
ANDREA SCHWAN
883-6152

Dressmaker

DRESSMAKING
Expert Alterations
On your fine clothes
Will call for and deliver on
quantity work.
For Appointment
Call
466-0573

Financial

GET CASH FAST!
Homeowner/Business Loan
Mortgages • Refinancing
No Income/Credit Check
Loans - Low Rates for
Good Credit
THE LOAN PHONE
694-0100
PRIME FUNDING, INC.
Fast Closings
New York State Lic.

Furniture

CHAIRS RECANED \$14.95 RUSHING \$49.95.
Refinishing Gluing
Lacquering & Bleaching
3 Generations of fine craftsmen!
THE ANTIQUE WORKSHOP
794-1212

Garage Doors

GARAGE DOOR OPERATORS
REMOTE RADIO CONTROLS
All-Clatic Sales/Service
Work Guaranteed
Rosllyn Heights, Est. 1953
484-1466

Home Improvements

Aluminum Siding
M.A.C. Insulated Siding
Aluminum & Vinyl • Doors &
Windows
• All Work Guaranteed
• Licensed • Insured
• Free Estimates
Michael A. Culon Lic. #992 HI
353-4154

Aluminum column specialists
Add elegance to your home.
Replace wood columns with
tuted aluminum, maintenance
free. Lic. Insured
Marked Construction Call
864-2840

DECKS

DECKING designed
especially for you.
DECKED OUT Inc.
Our 8th year building
fine decks.
484-1967

ISLAND DRY WALL INTERIORS

Sheetrock, Taping,
Spackling
Highest quality
workmanship
Estimates Available
JAMES
516-731-9914

KENNY ELECTRIC

Residential Electric
Service
746-7611

Home Improvements

SUTKINS HOME IMPROVEMENTS
Prompt and Reliable
Finishing work, carpentry, painting,
Home repairs & modifications
Licensed & Insured!
482-1879

Instruction

THE GIFT OF LEARNING
Educational Specialists
NY State Certified Teacher
K-12 - Will Tutor Privately
Remedial/Gifted
Co-ordinated w/School Program
FREE Consultation
516-775-5446

Landscaping

Clean-Ups
Indoor • Outdoor
Plus Odd Jobs
883-5849
767-0237

J & A LANDSCAPING

Spring Clean-Ups
Power Raking • Reseeding
Fertilizing • Liming
Emergence Crab Grass Killer
Tree Work • Rm Trees • Fences
Maintenance
Free Estimates
Great Neck • Port Washington
Manhasset • Roslyn
Joe After 5 PM
746-4539

Limousine & Chauffeur Service

CARTWRIGHT LIMOUSINE
Announces the inauguration of
its new service, featuring 1986
Lincoln Stretch Limousines
Serving North Shore & South
Shore Communities.
For Special Occasions
1 White, 2 Silver Stretchers
795-9197

Limousine & Chauffeur Service

DANIEL'S LIMOUSINE SERVICE
Prompt, Reliable Service
To Metro New York,
Nassau and Suffolk Areas.
Cordless Stretchers &
Sedans.
516-783-0051

Movers

TRANS-WORLD
Moving & Storage
Local & Long Distance
Reasonable Rates
Reliable Service
As advertised on the
Bernard Meltzer Program.
Licensed & Insured
516-541-4422

Painters/Plumbers

COLONY PAINTING
Carpentry, Interior/Exterior
Residential/Commercial
Neat Professional Paint,
Wallpaper, Paper Removal,
Ceramic Tile, Shetrock.
Fully Insured
MITCH
367-8675

Painters/Plumbers

GRANATH PAINTING
Commercial • Residential
Reliable • Insured
Free Estimates
Benjamin Moore Paints
Our Thorough Preparation
Assures A Quality Job.
Tom Granath 741-2141

Painters/Plumbers

M & L DECORATOR
PAPERHANGING
(European Method)
PAPER REMOVAL
INTERIOR PAINTING
BLINDS
Free Estimates
718-538-2784

NORTH SHORE PLASTERING & PAINTING

Sheetrock • Repairs •
Enameling
Carpentry • Moldings • Tin
Ceilings
Neat & Reliable References
922-1731

Our Reputation Makes Us First On North Shore

Established 15 Years
PAINTING • WALL PAPERING
PLASTER EXPERTS
Also Now Handyman Specials
Free Estimates
Very Reasonable Prices
All Jobs Guaranteed
SAVIANO BROS.
676-4338

PAPER HANGING

30 Years Experience
Removals
Free Phone Estimate
Paul
979-7120

PAINTING PROBLEMS?

Call a Professional & Solve them
Have it done right the first time.
Fully Insured. We still use oil
primers and oil finish coats. Very
thorough preparation, scraping,
machine sanding. We putty &
caulk windows & doors. Solve mildew
problems. Serving Nassau only.
BRADLEY TILTON
671-1793

PAINTING

Interior • Exterior
Theodore J. Baade, Jr.
• COMMERCIAL
• RESIDENTIAL
Free Estimates
628-2120

SAM'S PAINTING

Interior • Exterior
Finest Quality Paints
Neat, Reliable, Insured
FREE Estimate
333-9740

Parties & Entertainment

CREATIVE SOUND
Professional DJ and MC for any
occasion. Light Show, Top 40,
Disco, New Wave, Oldies, Big
Band, Swing, Ethnic Music,
Special Songs, and Much More!
ALSO AVAILABLE
Off-Party Specials
Call 265-1554

D.J. DAVE

"Your All Occasion
Music Man"
Big Bands to Disco
M-F 929-8089 AM
744-6301 PM

MAGIC! MAGIC! MAGIC!

Live rabbit, audience involve-
ment, comedy, magic gifts
Birthdays, Dinner Parties,
Stage Shows, ALL AGES!
Magic by BOB INFANTINO
579-6688

Parties & Entertainment

NORTHPORT ASTROLOGER
Available for Tarot Card
Readings, Palm Reading, Reader
and advisor on all problems
such as love, marriage and
business. All readings are private
and confidential.
Call for appointment 10am-10pm
516-744-9796

Magic & Comedy

For All Occasions
By...
Alan Garber, Magician
933-7592

PROFESSIONAL

Magic Shows For Children
Saloon Animals, Special
Holiday Shows Available.
Very Reasonable
ROBERT
718-428-7474

RICARDO TORRES SINGER

For All Occasions
676-1048

Pianos

Pianos For Sale
Steinway-Mason-Hamlin
Knabe Grand Pianos.
Scale Tuned - Moved
Guaranteed
29 Years Experience
ED MARTIN
628-2445

Plumbing & Heating

ALL REPAIRS & INSTALLATIONS
Drains & Sewers Elect.
Cleaned • Water Mains
License Number 658
Complete Heating System, Boilers
621-2696

Vincent J. Bono

Plumbing & Heating
Residential, Commercial &
Industrial Minor Repairs.
Major Alterations,
Boilers & Heating Work.
829-5080

LARRY GRAZIOSE

PLUMBING & HEATING, INC.
Jobbing, Alterations, New
Work, Gas Conversions,
Water Heaters
671-7254

THOMAS R. PRUDENTE

PLUMBING & HEATING
Serving the Manhasset and Port
Washington areas for
over 25 years. Repairs
Stoppage, Alterations
Gas Hot Water Heaters
Conversions.
944-3636

Professional Nurses

KIND & COMPASSIONATE HOME CARE SERVICES
RNs, LPNs, Aides, Graduates
We provide you with kind &
compassionate workers to care
for your loved ones. In Home
Hospital. We specialize in
Geriatric Homecare
718-424-8019
718-539-4116

North Shore Nurses' Registry

Qualified Professionals
are happy to provide you with all
the nursing care you may need.
Our prompt & courteous service
is available 24 hrs. day
7 days a week
516-486-7241

WHITE GLOVE AGENCY

RNs • LPNs • Aides
Companions
Homemakers & Live-In
Tender loving professional
care for your loved ones
at home.
468-5454

Rubbish Removal

DUMP TRUCK FOR HIRE
ALL CLEAN-UPS
Basements, Attics, & Yards!
All Types of Debris Removed!
INSURED
ROBERT (leave message)
549-5396

Security

Martial Arts Instruction
ALSO House Warming &
Business Protection Service
Established 1962
NEW YORK MARTIAL ARTS
Huntington Village
Call 516-549-9612

Special Section

ORIGINAL GRAPHICS
BEAUTIFUL ART by
Contemporary Masters at
Discount Prices
Great for Decorative or
Investment Purposes.
783-6760

R.G. GROUNDS MAINTENANCE

Residential Property to
Large Estates
PROFESSIONAL CARE
Tree Pruning, hedge trim-
ing, roof feeding, lawn
edging, Gardner service,
erosion control & sea-
walls
Landscape Design
Call After 5 PM
681-2620

WALTER A. COOK

FINE WOODWORKING
Custom Windows & Doors
Fine Furniture
Moldings Reproduced
45 Years In Business
271-0447

Tile

B.K. TILE
All Types of Tile Work
Reasonable/Licensed
759-1089

TRAVEL

BON VOYAGE
CRUISE
SPECIALISTS
Couples • Singles • Groups
Cruises for all Occasions.
Come aboard the
CARNIVAL "Fun Ships"
347 day Cruises
BAHAMAS, CARIBBEAN
MEXICAN RIVIERA
From \$375 per person
double occupancy
Inc Round Trip, FREE airfare
CALL NOW
516-423-SHIP

Windows

A-B-M Window Cleaning
Professional Service with
an old fashioned touch.
Excellent work guarantees
your satisfaction.
Fully Insured. Family trade
since 1920
Call 622-2296 & ask for Bob

Trees

R. PIERCE
Tree Work
Complete, Dependable
Insured
EXPERIENCED
671-6904

TREE WORK! TREE WORK!

Pruning, Strip Grinding,
Removal, Spraying,
Land Clearing
FIREWOOD! FIREWOOD! FIREWOOD!
500 a cord, unseasoned
delivered & dumped
DOM'S TREE SERVICE
944-6497

Trucking/Delivery & Moving Service

A OYSTER BAY MOVING COMPANY
Professional Service.
Fair Rates.
Free Estimates
676-7035

FACT TRUCKING SERVICES

Bayville, New York
Reasonable & Reliable
We can service your
commercial or personal
needs
628-2013

PETE'S TRUCKING & DELIVERY SERVICE

Local, Long Distance,
Commercial, Household,
Cleanups, Pianos, Apartment
Moving Our Specialty.
Insured, Licensed, Reasonable
516-483-3514

Typing Services

WORD PROCESSING
Specialized professional service
• Resumes
• Letters
• Mailing Lists
• List Maintenance
• Reports/Proposals
• Dissertations/Theses
ANNEMARIE 754-0327

Video Services

VIDEO FOR YOUR WEDDING & SPECIAL EVENT
18 Years Experience
Courteous Professional Service
Wireless Equipment
Affordable!
PO VIDEO DESIGN INC.
786-9220

Video Services

VIDEO SERVICES
Videotape Your Precious
• Moments
• Attainable & Professionally
Captured
Call Davison
468-2555

Water Treatment Systems

Safeguard your family's
health by protecting your
water with a Rainsoft
whole house system.
Call for a free water test.

365-8872

Call For INFORMATION ABOUT ADVERTISING IN THE SERVICE GUIDE

CLASSIFIEDS

East Northport Voice
Glen Cove Record Pilot
Jericho Tribune
Manhasset Press
Nassau Illustrated News
Port Washington News
The Elmonitor

Farmingdale Observer
Great Neck Record
Levittown Tribune
Massapequan Observer
Northport Journal
Roslyn News

Reaching 250,000 Readers
Floral Park Dispatch
Hicksville Illustrated News
Long Islander
Mid Island Herald
Oyster Bay Enterprise Pilot
Syosset Tribune
Westbury Times

**747
8282**

THE ANTON PAPERS
 132 East Second Street
 Mineola, NY 11501

(OR. IN SUFFOLK)

**427
7000**

THE LONG-ISLANDER
 313 Main Street
 Huntington, NY 11743

RATE PER LINE
 \$5.50 (min. 2 lines)
SINGLE COLUMN BOX
 \$41.75 PER INCH

DEADLINE: Monday Noon

CANCELLATIONS

DEADLINE 3PM every Friday
 Ask for your insert number
 when calling

ERRORS
 The Anton Papers and The
 Long Islander are not
 responsible for errors
 beyond the first insertion

All Ads Must Be Pre-Paid
 Check, Money Order,
 MasterCard or Visa

HELP WANTED!!
PASTE UP ARTIST
 For Newspaper Production Dept.
 Experience A Must!!
 4 days a week, 8:30 AM - 4:30 PM
 Benefits plus paid vacation and
 holidays
 747-8282 ext. 139
 ask for Billy or Joe

HOSTESS for quality NY's waiter
 and Ex. & Sal. nights. Make
 responsible relative some expe-
 rienced. Call 676-9641 for app.

IMMEDIATE
CERICAL TYPIST
 Full Time 7
SECURITY GUARDS
 Full Time 3
VANDERBILT MUSEUM
 Centerport, NY
 281-5556

INVESTMENT SALES
CAREER
OPPORTUNITY
 56 Year Old Wall Street Firm
 New office on North Shore
 Complete Training
 First Year Potential \$35,000
 Call Mr. Castanzo
 516-829-8010

1 Announcements

REUNION
THE CLASS OF 1937
from FREEDPORT H.S.
is planning a 50th Reunion on
JULY 25th, 1987
 We are looking for all class
 members and all information
 and addresses. Please call:
 HAL CRUCKSHANK 378-0279
 or write to him at
 BOX 252
 FREEDPORT, NY 11520

REUNION
 The Graduating Class Of
JUNE 1947
FAR ROCKAWAY
HIGH SCHOOL
Far Rockaway, NY
For a 40th Reunion
 Call
 Fran Kilmer-Sand
 516-623-4714 Even

With MARY KAY COSMETICS you
 can't just something you buy
 it's something you earn. For com-
 plementary facial, call for a part
 independent Beauty Consultant
 Laurie Meade 84-0822
VALE EXPRESS SERVICE Moving
 and Storage. General com. modifi-
 cations. Local and long dis-
 tances. Daily service between
 Metro NYC and Central NY.
 212-461-2221, 516-854-4848
 107-363-1113, NY/CAN.

2 Professional Services
 We welcome your ad for
 your professional service to
 the community.
 Please call
516-747-8282
 Ask for a Professional Ad. Mark
 Our Deadline is Mon. Noon

Adult Homes

JONES MANOR
On The Sound
 Jones Manor On The Sound is a
 40-bed facility for aged and a coun-
 try setting overlooking Long Is-
 land Sound. A non-profit home
 dedicated to providing excel-
 lent, individual care. Sports
 events, with twenty-four hour
 services for ambulatory adults.
 Licensed by New York State Au-
 thorized by Bayville, New York
 516-828-1350

Counseling

Life's Counseling for Anxiety,
 Depression, Relationships, Drugs,
 Alcohol, Juniors, M. Conboy, M.D.
 626-3122

2 Professional Services

WEIGHT CONTROL
 Are you serious? Do you want to
 • Stop Compulsive Eating?
 • Be in Charge of Your Weight?
 • Feel Good About Yourself?
Paul Hurewitz, Ph.D.
PSYCHOLOGIST
 25 yrs. Exp. Insurance Accepted
 8 South Dr. Roslyn 627-4544

WOMAN TO WOMAN
COUNSELING
 Confidential
 Individual, Marital, Couples
 Mature New York State licensed
 psychotherapist. MODERATE
 FEES. Offices in Great Neck &
 Roslyn. For information call
621-4884

Massage

HANDS
FOR HEALTH
 Improves Circulation
 Relieves Stress & Tension
 In The Privacy Of Your Home
 Or Mine
 NYS Licensed & Certified
 -Women Only Please-
759-9338

HEALTH TOUCH INC.
 Professional Massage Center
 Great Neck 466-6642
 Swedish, Sports, Medical Mas-
 sage. Reflexology. NYS Licensed
 SHIATSU THERAPY team to relax
 total on body and face. NYS Li-
 censed & Approved 718-358-0116

Therapeutic Massage
 Swedish, Acupuncture, Sports
 Massage, A deep muscular
 massage for softening of neck,
 shoulder, and back pain sci-
 atica and migraine headaches.
 NY State licensed. Northport
516-754-1273

Nursing Services

PRIVATE REGISTERED NURSE
 Available Quality Care to all
 516-873-6907

Psychotherapy

Specializing in anxiety, depres-
 sion, psycho, & substance
 abuse problems.
 Individual & marital
JOAN NELSON, C.S.W. CAC
 Call 516-333-0731
 for appointment

VICTORIA TRAVIS, MSW, CSW
 Specializing in Child and
 Adolescent Psychology
 466-0183 For Appointments

3 Personals

MEET CHRISTIAN SINGLES
 Local/National by Phone or Mail
 Free Brochure Fast Service
 Call 1-800-322-8113 ext. 537
MEET YOUR MATCH For all ages
 and unattached. Thousands of
 members anxious to meet you.
 Prestigious Acquaintances. Call
 for Free 1-800-263-6873, noon to 8
 pm. (NYS/CAN)

SUNSHINE
AND
IN MEMORIAM
 CARDS
 *Donation for cards payable to
 Port Washington
 Chapter of
 Cancer Care, Inc.
 THE CHAPTER COVERS THE
 FOLLOWING COMMUNITIES
 "GREAT NECK"
 "MANHASSET"
 "PORT WASHINGTON"
 Call Mrs. Cavanaugh
 Evening calls Preferred
 683-6404

9 Lost and Found

FOUND
PORT WASHINGTON BEAGLE
 Thurs. Jan 8 in Manhasset
 627-3210
LOST Newfoundland Collie mix.
 Male. Six weeks old. Brown
 paws. 20 lbs. friendly.
 wearing flea collar. Answers to
 KODA. 12/25 Melville area.
 385-0120

22 A Domestic

BABYSITTER/HOUSEKEEPERS
 Live-In Out. Ex. Salary & Benefits.
 Child Care Registry 549-3344.
WANTED Nurses Aide for swing
 & care for elderly woman. Great
 Neck area. 484-2541, after 5pm

22 B Domestic Services

CLEANING Woman available for house
 cleaning. Good refs. Own tools.
 Call Anna at 489-4304

22 C Child Care

LOVING Babysitter will care for
 your child in my home. Roslyn
 area. Call Mary 625-2571
MOM'S CHILD CARE in my Port
 Washington home. 24 hour service
 available. All ages. 683-8296

Help Wanted

ANIMAL WARDEN Village of
 Garden City. Part time. For infor-
 mation call Lt. Lewis E. Gephart
 747-9600

ANTON COMMUNITY NEWSPAPERS

...has immediate opening for career-minded
DISPLAY SALES REPRESENTATIVE
 •Excellent Potential
 •Experienced
 Call Mr. Skahill
 747-8282, extension 170

Help Wanted

AUTO MECHANIC GLEN HEAD
 EXP. OWN TOOLS. 571-3823
BOOKKEEPER FIC. PP. 28 hours
 Huntington, Box 2061, Massape-
 que, NY 11743

BOOKKEEPER FIT
 Assistant A/R. A/R computer
 experience helpful but will
 train. Modern Westbury office.
 All benefits. Ask for Sheila.
997-9200

BOOKKEEPER Full charge, ex-
 perience, computer helpful but
 not nec. good benefits, salary neg.
 Huntington law firm. 427-9300

BOYS AND GIRLS
 sign up for the best job in town.
 Join the new, week-end
 Newspaper Delivery team. Call
 today to reserve a route in your
 neighborhood.
753-9039

CASHIER Responsible person. 2-3
 full days. Manhasset area.
 Referees & resumes welcome.
 Call evenings. 625-0490

CATERING
FOOD PREPARATION
 Mature person, experience
 helpful but not necessary. Daily
 and weekends.
GEN'L KITCHEN WORK
 Local college student. 12-6pm
 daily and weekends.
427-6383
 Ask for Egon or Marlene

CERTIFIED NURSES AIDES
 needed to start nursing homes
 and hospitals. Flexible hours. Ex-
 cellent pay. VPH Health Care. Call
 516-335-5025
CHAUFFEUR Wanted. Corporate
 Executive. prefers spring. perma-
 nent. as driver, or return to room.
 board, and small allowance. Call
 daily at 516-367-3440

CHIROPRACTIC ASSISTANT
 Will train. M-F 10am-5pm.
 Tues 3-7. Sat 10am. Chiroprac-
 tic exp. 676-6895

CERICAL PT Monday thru Thurs.
 8:30-5:30pm. Flexibility needed.
 Fringe benefits. Vacation. Good
 training. Full time position.
 Commuter/Transit Reimburse-
 ment. Call Bill Martin
484-2600

DENTAL ASSISTANT
 Sub. exp. in training for thought
 children & high school practice in
 Roslyn. Call Andrea 676-8148
DENTAL HYGIENIST 1 day
 1st shift. Potential for growth. Top
 salary. 516-676-8148

DENTAL HYGIENIST
 2 days. Tues & Thurs. pref.
 Call 627-3484

Help Wanted

CERICAL POSITION
FULL TIME
 Experience preferred. Duties in-
 clude bookkeeping, computer
 input, bank deposits. Salary
 based on experience. Excellent
 benefits include medical and
 dental plans. Call the sum-
 mer for an interview app.

LUYSTER
676-6444

CERICAL PT Afternoons, Port
 Washington. Good telephone
 voice. Light typing. diversified
 duties. 516-944-3554

CERICAL Position open 30 hrs a
 week. Flex days. Typing, heavy
 filing, attention to detail. Permanent
 position. Unfurnished area. 252-1481
 ask for Donna

CLERK/RECEPTIONIST 9-5, 5
 days/week. Permanent. Will train on
 IBM 36. **621-5620**

CLERK/RECEPTIONIST
 For National Company. 45 WPM
 Figure aptitude. Please exp. Full
 range of Company Benefits. Call
 516-354-8500

CONSTRUCTION Drivers,
 Mechanics, Welders, Electricians,
 Machinists. Carpenters needed
 immediately. Also Amigo jobs. Will
 train some positions. Up to
 \$60,000/mo. Transcontinental Job
 Search 308-382-3700. Fee required.
 (NYS/CAN)

CONSTRUCTION Working Sup-
 ply contracting firm requires
 exp. carpenters. Alterations
 jobs, industrial in metro area.
 Permanent career opp. Sal. neg.
 Send Resume. Rural Contrac-
 tion Corp. 5200 60th St. Massape-
 que, NY 11743

Computer Software

Sales
 Recently established Main
 Frame Software Co. Sales Exp.
 preferred. Full time, red Com-
 puter background. Salary &
 commission. 75K. Available
 immediately. Call 516-335-5025
 Call 516-628-7080

DATA ENTRY

Various an. in. training for
 an individual with CRT ex-
 perience. Full time position.
 Commuter/Transit Reimburse-
 ment. Call Bill Martin
484-2600

DENTAL ASSISTANT
 Sub. exp. in training for thought
 children & high school practice in
 Roslyn. Call Andrea 676-8148
DENTAL HYGIENIST 1 day
 1st shift. Potential for growth. Top
 salary. 516-676-8148

DENTAL HYGIENIST
 2 days. Tues & Thurs. pref.
 Call 627-3484

HELP WANTED
OFFICE CLEANING
 516-889-7234

MARMADUKE® by Brad Anderson



"It's too cold for you to play outside, but let Veronica walk by..."



"Fact 1: Freshly baked cookies were on the counter. Fact 2: Said cookies have vanished. Fact 3: You are smacking your chops!"



"You disturbed him...so why don't you get a head start before he really wakes up?"

Help Wanted

Help Wanted

Help Wanted

Help Wanted

Help Wanted

32 Private Instruction

42 Wanted to Buy

TELLERS TRAINEES/EXPERIENCED

We have openings throughout Nassau County for Trainees & Experienced Tellers.

We offer a Friendly, Pleasant Atmosphere, Excellent Benefits Package & Competitive Salary.

Applications accepted daily at all Branches between 9 a.m. and 3 p.m., or stop in at:

666 Old Country Road
Garden City

NORSTAR BANK
LONG ISLAND
Equal Opportunity Employer
(516) 222-7900

LIMO DRIVERS Needed FT

Major Airport Service
Good Salary Plus Tips
Days: 516-883-3962

LOAN CLERK Part Time

Mature responsible individual wanted for part time position in Loan Department in Glen Head. General office experience preferred. Banking background a plus. 4 hrs per day, Mon-Fri. to suit your schedule. Excellent salary and benefits. Pleasant atmosphere in a small community bank. Trainees welcome to apply.

THE FIRST NATIONAL BANK OF LONG ISLAND
671-4900

MAINTENANCE

Modern office and an attractive home seeks full time individual who will maintain its facilities. General cleaning, minor repairs & maintenance skills required. Full responsibility for maintenance. Call Dennis Finkelstein at 516-484-2700.

MANUFACTURING

Growth in this established firm has created the following employment opportunities:

TRAINEES

Entry level openings in our Production Department.

SHIPPING

No experience necessary.

INSPECTORS

For in process inspection of precision parts.

All positions offer a competitive starting salary and an attractive benefits package. For further information please call:

MILL-MAX MANUFACTURING

Oyster Bay New York
922-6000

MEDICAL

ROSLYN
VETERINARY SERVICE
Seeks Full Time/Part Time CLERKS, TYPISTS, and ECG TECHNICIANS. Will train! For consideration, call Dennis at 484-2700.

MILL NECK MANOR

Lutheran School For The Deaf
TEACHER ASSISTANTS
Elementary or High School level. High School diploma and 6 college credits required. Sign language skills preferred. Send resume with references to: Mr. Henry Bjorlie, Supr. Mill Neck Manor-Lutheran School For The Deaf, P.O. Box 12, Mill Neck, New York, 11765.

MODELS

Use TV. Day in 1987. 83 needed for 3 prestigious Long Island clients. M/F ages 4 thru 40. \$200/10day. Immediate interviews. NO Fee. No experience necessary.

COUNTRY WIDE MODELS

420-0455

MAIL ROOM HELP Full Time

Paid Benefits & Vacation
Apply In Person:
Anton Community Newspapers
132 East Second St.
Mineola, NY
747-8282

NURSE LPN

High level nurses aide. Adult Day Care Ctr. Leader. 40 hrs per week. 6 days per week. Excellent salary and benefits. Call Mrs. M. G. 959-7595.

NURSERY SCHOOL

SUBSTITUTE TEACHERS
Needed. Long term & per diem. Must be early childhood trained and experienced. Good opportunity to work locally. P. Sena resume to: GNCSS 225 Schenck Ave. Great Neck N.Y. 11021.

OFFICE CLERK

FT/PT. Light typing, filing, answer phone. Please Mr. Washington. Call Gary at 747-8282.

OFFICE POSITION

Open FT/PT. Inter. typing & scheduling. Personal Good phone manner. Small Office. Call Pat. 747-9225.

OFFICE WORKERS

PHONE ANSWERING

Mature person needed to work new home in Port Washington. Full time. 40 hrs per week. \$12.00/hr. Call 747-8282.

FT/PT-WILL TRAIN

FREE TRANSPORTATION. 10 hrs per week. 10 hrs per week. Port Washington and Man. Call 747-8282.

CALL NEIL

883-3962

PARALEGAL

ten (10) attorney Great Neck seeks corporate & real estate paralegal to assist in rapidly expanding practice. Formal paralegal training in practical experience required. Competitive salary & benefits package. Resume to: Box 1146, Anton Community Newspapers, 132 E. Second St. Mineola, NY 11501.

PART TIME

Marketing Research Company, earn extra income conducting telephone interviews. No selling, train, travel, hours flexible. 10 hrs per week. Office near LIRR in Great Neck. Also seeking BOOKKEEPER. Part time or full time. Call 883-3962.

PART TIME OR FULL TIME

POSITIONS AVAILABLE
Excellent Pay and Benefits. We are looking for mature, quick learning individuals to train as medical laboratory answering service operators. Must be available evenings and weekends. Must be willing to work at least 25 hours per week. Excellent Opportunity. Permanent to apply. Call 883-3962 or visit 416 Main St. Port Washington, N.Y. 11051. 9am-5pm Mon-Fri.

PART TIME

Responsible person needed to work 10 hrs per week in a local hospital. For North Shore. \$4.50 per hour. Frequent paid vacations/holidays. Call 326-1277.

PT CLERICAL

position open full time typing heavy filing, small office. Permanent position. His flex. Call Pat. 971-9205.

P/T DRIVERS

in Van/Trucks
needed to make bulk newspaper type drops to local distributors in Nassau & Suffolk. Must be available Thurs & Fri. Excellent contract for rates - gas allowance.

P/T DRIVER

Locate P.O. Box 73, Roslyn, NY 11576. Business 718-653-7100 to 627-1696.

P/T HELP WANTED

Weekend circulation Superiors. Manage newspaper carriers in your own neighborhood. Full sized circulation wagon necessary. High earnings. Openings now available.

P/T LIBRARY AIDE

Manhasset Public Library. 10 hrs per week. 10 hrs per week. Call Mrs. C. 228-2306.

P/T MOTOR ROUTE DISTRIBUTION

Adults needed to distribute newspapers. Saturday mornings. Must have reliable, good gas mileage vehicle & clean job.

P/T RESTAURANT POSITION

available for hostess, wait, waitress, noon counter take out person, manager/trainer. Apply in person.

Tab's Burger House

411 Plandome Rd. Manhasset, NY
Mon-Fri 9am-11pm
Sat-Sun 10am-11pm ONLY

P/T approximately 18 hours

DIET COUNSELOR. Interested diet person manager/trainer. Apply in person. Call 718-654-1700 a.m.

PORT WASHINGTON

REAL ESTATE SALESPERSON
Super opportunity to associate yourself with long established expanding Real Estate firm. MYOE REALTY has again had our best year and its the perfect time for you to join us. Floor time available. All inquiries confidential. E-mail necessary. Contact Mr. Walker.

REAL ESTATE SALESPERSON

MacCRATE REALTY
is now recruiting to build its active and energetic sales force. Call for an appointment.

RECEPTIONIST

Oyster Bay office. Full time. 922-6133.

LEGAL SECRETARY

needed for North Shore. High. Light typing & pleasant phone voice required. 676-7400.

REAL ESTATE SALES- PERSONS & MANAGERS

Join our dynamic, successful North Shore team. Highest commissions compensation commensurate with experience. All inquiries confidential. Money karp 516-484-1110.

RECEPTIONIST/TYPEST

Landscape Design. Excellent opportunity for alert conscientious personality and typing skills. Competitive salary and benefits. Hours: 9-5. For prompt interview, call:

RECEPTIONIST

Light typing pleasant Real Estate office. Return welcome. Mon-Fri 9:30-5:30.

Receptionist FT

for busy insurance agency. Experience preferred with light clerical & typing. Full employee benefits program. Please call:

VIKTORIA MILLER

484-2350

SALESPERSON Outside/Telephone

Subscriptions
Floral Park and Elmont areas. Commis. Call Mr. Shahit 747-8282.

SCHOOL CROSSING GUARDS

Garden City Schools. Part time. For information call: L. Lewis 742-8602.

SECRETARIA/ASSISTANT

for Huntington and Long Beach. Over 10 yrs. experience. Excellent salary and benefits. Call 747-8282.

SECRETARY

Computer dept. of child care agency. In Glen Cove. Typing skills req. 9-5. Excellent salary and benefits. Call 747-8282.

SECRETARY

for busy insurance agency. Experience preferred with light clerical & typing. Full employee benefits program. Please call:

SECRETARY

for busy insurance agency. Experience preferred with light clerical & typing. Full employee benefits program. Please call:

SECRETARY

for busy insurance agency. Experience preferred with light clerical & typing. Full employee benefits program. Please call:

SECRETARY

for busy insurance agency. Experience preferred with light clerical & typing. Full employee benefits program. Please call:

SECRETARY

for busy insurance agency. Experience preferred with light clerical & typing. Full employee benefits program. Please call:

SECRETARY

for busy insurance agency. Experience preferred with light clerical & typing. Full employee benefits program. Please call:

SECRETARY

for busy insurance agency. Experience preferred with light clerical & typing. Full employee benefits program. Please call:

SECRETARY

for busy insurance agency. Experience preferred with light clerical & typing. Full employee benefits program. Please call:

SECRETARY

for busy insurance agency. Experience preferred with light clerical & typing. Full employee benefits program. Please call:

SECRETARY

for busy insurance agency. Experience preferred with light clerical & typing. Full employee benefits program. Please call:

SECRETARY

for busy insurance agency. Experience preferred with light clerical & typing. Full employee benefits program. Please call:

SECRETARY

for busy insurance agency. Experience preferred with light clerical & typing. Full employee benefits program. Please call:

SECRETARY

for busy insurance agency. Experience preferred with light clerical & typing. Full employee benefits program. Please call:

SECRETARY

for busy insurance agency. Experience preferred with light clerical & typing. Full employee benefits program. Please call:

SECRETARY

for busy insurance agency. Experience preferred with light clerical & typing. Full employee benefits program. Please call:

SECRETARY

for busy insurance agency. Experience preferred with light clerical & typing. Full employee benefits program. Please call:

SECRETARY

for busy insurance agency. Experience preferred with light clerical & typing. Full employee benefits program. Please call:

SECRETARY

for busy insurance agency. Experience preferred with light clerical & typing. Full employee benefits program. Please call:

SECRETARY

for busy insurance agency. Experience preferred with light clerical & typing. Full employee benefits program. Please call:

SECRETARY

for busy insurance agency. Experience preferred with light clerical & typing. Full employee benefits program. Please call:

RESTAURANT

New Restaurant Opening

Immediate Opportunities
Full or Part Time
All Positions

Exposure to the hospitality

industry is a plus. Excellent training provided. Some late evening and weekend hours involved. We offer good starting pay and a growth-oriented environment.

Apply in person daily 9am-5pm

except Sundays, Tuesdays & Thursdays until 8pm. J.B. WINBERIE, Member of the Long Island Music Hall Orchestra. Accepting a limited number of students. All levels.

516-829-6033

33A Pets for Adoption

Adopt a pet from a loving family. Call 516-829-6033.

J.B. Winberie

RESTAURANT AND BAR

TYPESETTER

FT Experienced.
Compographic 8400.
Call Janice: 516-747-8282 Ext. 145.

Between

WAREHOUSE

Material handler needed in shipping department. Requires some heavy lifting. Good starting pay and benefits. Must have own transportation. For info, call 516-829-6033.

26 Situations Wanted

AWARD WINNING DESIGN STUDENT
Seeking FT or PT position in graphic arts field. Call 516-829-6033.

CHAUFFEUR

Available full time. Full experience. Call after 5pm: 871-4684.

NURSE

Available for home care. 750-3622.

PROFESSIONAL PRINTER

Experienced. Real resume. For services Benjamin Moore paints on job. 516-829-6033.

TUTOR CRAFTSMAN

PAINTING CO. Interior/Exterior/Repainting. Free estimate. Call 427-4692.

27 Business Opportunities

DEALERS DISTRIBUTORS SALES PEOPLE WANTED. New computerized data base for home of business. Tremendous profit potential. Exclusive territories available. No investment necessary. Anchor Investments, 516-829-6033.

28 Investments/Stocks

EARN 15%
On Money With Mortgages In Real Estate. No Quota In Our Down Payment. All Free! Very Good Equity Position. Minimum Investment \$20,000. Call 228-8275. Eyes on the prize.

THREE Steel Boats

Quickest & straightest. Must appreciate 32'x40', 40'x42', 50'x100'. Up to 50% off. Never erected. 880-43-0052. Xcel Inc. (NYC/NY).

THUNDERBIRD 1964

2nd year. New tires. Owner selling. Down \$500.00. Call 747-8282.

THUNDERBIRD 1964

2nd year. New tires. Owner selling. Down \$500.00. Call 747-8282.

THUNDERBIRD 1964

2nd year. New tires. Owner selling. Down \$500.00. Call 747-8282.

THUNDERBIRD 1964

2nd year. New tires. Owner selling. Down \$500.00. Call 747-8282.

THUNDERBIRD 1964

2nd year. New tires. Owner selling. Down \$500.00. Call 747-8282.

THUNDERBIRD 1964

2nd year. New tires. Owner selling. Down \$500.00. Call 747-8282.

THUNDERBIRD 1964

2nd year. New tires. Owner selling. Down \$500.00. Call 747-8282.

THUNDERBIRD 1964

2nd year. New tires. Owner selling. Down \$500.00. Call 747-8282.

THUNDERBIRD 1964

2nd year. New tires. Owner selling. Down \$500.00. Call 747-8282.

THUNDERBIRD 1964

2nd year. New tires. Owner selling. Down \$500.00. Call 747-8282.

THUNDERBIRD 1964

2nd year. New tires. Owner selling. Down \$500.00. Call 747-8282.

THUNDERBIRD 1964

2nd year. New tires. Owner selling. Down \$500.00. Call 747-8282.

THUNDERBIRD 1964

2nd year. New tires. Owner selling. Down \$500.00. Call 747-8282.

THUNDERBIRD 1964

2nd year. New tires. Owner selling. Down \$500.00. Call 747-8282.

LICENSED MATH TUTOR

Grades 5-10. PAT O'MALLEY, School 516-365-4900. Home 718-297-7406.

PRIVATE TUTORING

Licensed teacher. All grade levels. Special in English & Social Studies. Free. Hawthorne Ave. 883-2139.

PRIVATE Tutoring

Verbal. PSAT. SAT. TOEFL. Study skills. 20 years. Roslyn Schools. Certified teaching specialist. Mrs. Kesh 671-0560.

STUDY SKILLS SPECIALIST

Experienced teacher with over 20 years in public schools. Will teach children, grades and improve their skills. Free effective & proven study techniques. 773-9825.

TRUMPET LESSONS

In your home. North Shore Only. Former Member of the Long Island Music Hall Orchestra. Accepting a limited number of students. All levels.

516-829-6033

33A Pets for Adoption

Homes for Sale

Port Washington VICTORIAN

Charming 4 BR, 2 bath, 2 hall baths, wrap-around porch, lots of details.

\$340,000

New Listing

Wonderful 3 BR, 2 bath, brick exterior, aluminum exterior CAC. Finished playroom, deck, porch and more beach rights available.

\$225,000

CENTURY 21 FOLAN AGENCY 944-9721

378 PORT WASH. BLVD. OPEN SEVEN DAYS WKLY. Member Ft. Wash. Board of Realtors.

WESTBURY Circle Place S.D. Wood, 4 BR cape, 2 full baths, DR, LR w/alcove, new custom kitchen, study, broom, garage, fully landscaped. Many extras, immac. Asking \$250,000. Principals 997-5784.

Homes for Sale

SANDS POINT THE GOOD LIFE

Presenting a brick classic Federal Colonial on 4.72 acres offers majestic entry way and living/dining rooms, 7 1/2 family bedrooms, servants quarters, guest apt, swimming pool & tennis court.

3.8 Million

CENTURY 21 FOLAN AGENCY 944-9721

378 PORT WASH. BLVD. OPEN SEVEN DAYS WKLY. Member Ft. Wash. Board of Realtors.

SOUTHOLD EAST MARION

Magnificent Waterfront Condo Views to Shelter Island and beyond. Mint 3 BR, cathedral ceiling, skylights, ac, marina, pool, clubhouse, tennis, golf, extras! \$205,000. Owner, terms 592-5252 or 477-9555.

Homes for Sale

APPRISERS LEE CRUCKER COMPANY REALTORS

Glen Head. AN ENGLISH style acre country garden, complete with gasco and pool. 4 BR, 2 baths. \$370,000.

48 FOREST AVE. GLEN COVE, NY 11542

516-674-4111

RELO - World Leader in Relocation

WINDHAM AREA New contemporary home, walk to school, 3 BR, 2 1/2 baths, jacuzzi, stone fireplace, 1st class. Ready to move in. \$285,000. 516-621-5843. 518-743-3745.

Call 747-8282

Homes for Sale

ROSLYN Roslyn/Searingtown

Exceptional 3 BR, 3 bath, on beautifully landscaped property with all the amenities of a special home.

\$505,000

CENTURY 21 FOLAN AGENCY 944-9721

378 PORT WASH. BLVD. OPEN SEVEN DAYS WKLY. Member Ft. Wash. Board of Realtors.

WINDHAM ON MOUNTAIN

New contemporary home, walk to school, 3 BR, 2 1/2 baths, jacuzzi, stone fireplace, 1st class. Ready to move in. \$285,000. 516-621-5843. 518-743-3745.

Homes for Sale

GLEN COVE HIGH ELMS

Decorator's delight. Priced below appraised market value. huge 5 BR, multi-level, 2 car garage, potential M.D. 1/2 acre. Asking \$350,000. All offers welcome.

LOVELY NEW ENGLAND CAPE

Combine warmth & charm. LR/alcove, 1st DR, chaise longue, 4 spacious BR's, 2 baths, sunken den, open onto arbutus lawn like property. In Laitingtown. Beach & golf clubs. Asking \$395,000.

PRE-REVOLUTIONARY

Farmhouse with a flair, unique beauty & imagination. LR & library w/ french doors & fireplace. 5 BR - two w/alcoves, 1st DR, greenhouses & barn w/wooden floors. 1.5 acre grounds. Oyster Bay Cove. Asking \$600,000.

WHITE ACE POWER BROKER NO SALE POINTS
RYEFIELD REALTY
Free appraisals cheerfully given. 671-3346
4 Buckham Rd. Locust Valley

Homes for Sale

WINDHAM ON MOUNTAIN

New contemporary home. Walk to school, 3 BR, 2 1/2 baths, jacuzzi, stone fireplace, 1st class. Ready to move in. \$285,000. 516-621-5843. 518-743-3745.

53 B Income Properties

LAKE PLACID Village 2 established Main Street businesses with renewable 3yr lease. Commercial & gifts inventory & future's Old time Photo Studio w/ inventory & fixtures. PO Box 361, 1999 Placid, NY 12946. (NTS&N)

53 C Out of Town Real Estate

HERITAGE VILLAGE

Large 2 BR Sheraton condo. New carpet, new kitchen. Excellent location, walk to shops & activities. Pool, tennis, gym. Limited occupancy. \$176,000. Firm Offer. 271-2901.

53 C Out of Town Real Estate

PRIME WATERFRONT PROPERTY

Hernando Beach, Fla. Directly on Gulf of Mexico. Channel 200' wide, 50' deep. Call after 5. 516-671-4884.

58 Plots for Sale

PECONE NO FORK VINEYARD HORSE COUNTRY

Two beautiful 1/2 acre to private sandy beach from town wood land 2 1/2 acre estate parcels. \$180,000 and \$350,000. In account for 1986 closing. Contact: 765-9219, 765-2059.

SEA Cliff Residential Building

Set in 1/2 acre lot. Asking \$220,000. Call: 765-9219.

58 Business Properties

HUNTINGTON Prime business property for sale. Best location. 1000 sq. ft. 1815 000. App. 1815. 765-9219.

HOUSE CALLS

By Edith Lank

FHA Loan For Investors

Dear Edith: Can you legally purchase a duplex that will not be your home with the intention of having the duplex produce income (i.e. it would be a rental property) using an FHA loan? Not an assumption, this would be a new, first mortgage—Mr. P.R.

Are FHA loans available for non-owner-occupied investment real estate? Yes, they are, for buildings containing up to four units. Minimum down payment is 15 percent, higher than for the purchase of owner-occupied property.

Sorry She Used Exclusion

Dear Edith: We sold our home in August of 1985. We built a new one in January, 1986. We used that one-time exclusion from income tax on our profit on the old home. We paid just under \$125,000 for our new place.

Would we have been wiser to have paid the tax on our old home and saved that

over 55, one-time exclusion off a later date? Just in case we decided to move or if something happens to one of us and the other decides to move to a smaller place? Is it too late to do anything about it now?—Mrs. R.

It's not too late to amend your 1985 income tax return and change your minds about using that one-time exclusion. You won't owe tax now on the profit from your first home, if the one you built cost more. Tax on your profit is postponed, rolled over into the cost basis of the new home.

Then, after you've been in the new home at least three years, you could sell it and apply the exemption to untaxed profits on both houses.

She Gave Down Payment

Dear Edith: Some years ago I sold my home and used the money for a down payment on a duplex for my daughter who was expecting her first child. I moved in

to one side and did lots of babysitting, etc. Now they have three children and had to refinance the house to raise money. My son-in-law, who has emotional problems, said if I didn't move away, he would. So my son helped me move to a little apartment.

My son has his own family to support and can't help me. I don't see how I can make it on social security alone. I have no other income and my name is not on that duplex. Should I see a lawyer and sue my son-in-law?

Of course you should have had your name on the duplex as part owner, or else you should have received a mortgage in return for the down payment you furnished. Many problems can be avoided if family matters are handled in a business-like manner. But it's too late for that now.

I don't know whether you could succeed in a lawsuit. Perhaps your son-in-law will claim the down payment was a gift. Perhaps even if you can obtain a judgement against him it won't do much good, if he doesn't have the money to pay.

By all means, though, take the question to a lawyer for at least an initial interview.

Interest Rate Won't Drop

Dear Edith: I read the letter you printed from R.S.W. about how to drop the interest rate on a fixed-rate mortgage. I paid my mortgage company \$3 for a loan amortization schedule. I pay the monthly amount plus an extra extra principal payment. Any number of extra principal payments are acceptable and it is rewarding to watch the interest drop—K.R.

Yes, as you pay down the loan, fewer dollars are due for interest, and more of each payment can go toward reducing the principal. As I told Mr. W., though, extra principal payments simply move you more quickly down the schedule and shorten the number of years remaining to pay. This does reduce the total amount of interest you pay during the life of the loan. But he had been hoping to lower his interest rate and monthly payment, and it won't do that.

Real Estate terms from "Abstract" to "zoning" are defined in House Calls' glossary of terms. WHAT DOES IT MEAN? Send \$1 and a stamped self-addressed envelope to: Glossary, 240 Hemingway Dr., Rochester, NY 14620. Edith will also answer personally any letter with an envelope.

A Free Service For Our Subscribers Simply Call Classified—747-8282

YOUR EVENT LISTED FREE

If you are holding an event that our readers might be interested in attending, we would be glad to publicize it for you, free. Just fill out this coupon and mail it to us two weeks prior to your event.

Name of event _____

Date of event _____ Time _____

Location of event _____

Sponsoring organization _____

For more information contact _____

Phone number of contact _____

Admission cost _____

Additional information _____

Send to: The Community Calendar
132 East Second Street, P.O. Box 1578 Mineola,
New York 11501

- 8 BR. beautiful white, 1000 sq. ft. 1983, beautiful leather interior, sunroof, garage, 50k, exc. cond. \$89,000. 427-5075.
- A COLLECTION OF 30 German Army trucks and tanks consisting of Willys, Hupac, Renault, Kiki, etc. \$22,750.
- ADDITIONAL Machine with tape, heavy duty, Grepping lawn sprayer. 627-7785.
- ADOPTION: Lhasa Apso, golden retriever, 11 yrs. good for older couples or single. 271-8844.
- AMC Grenlin 1978 ac, auto, pt. stereo, \$305. 930-7415 eyes.
- AMC PACER 1976 2 door auto. Asking \$500. 931-3020 after 5.
- AMC Spirit 1980, radio, heater, good cond. Best offer over \$950. 358-8410.
- ANTIQUE 100% large bang clock, dresser, beveled mirror, marble top desk, secretary type, glass doors, wooden card table. \$750 each item. 629-8997.
- ANTIQUE Candy chumsters (3) glass, Nickel plated, Oak & tile. 484-5840.
- ANTIQUE Oak lun. dresser, china closet, dry sink, chills rolltop desk. 486-8093.
- ANTIQUES to Marble. 626-2774.
- ANTIQUE Scottish jewelry, very fine. 486-4141 or 484-9659.
- APARTMENT: fixed refrigerator, freezer, 100 GE 21 cubic refrigerator almost \$300. Exc. Cond. Col. clolor plates. 498-3358.
- ARTIFICIAL Christmas tree, 6 ft., looks real, used once, good price. 671-6524.
- ASPEN Station wagon 1977 runs well, good condition turn about car auto trans. V8 engine. 368-1866.
- AUDI 5000S, 1976 full power, new tires, runs great, leather, needs some work. \$1000. Call Rick. 832-3803 ext. 4.
- AUDI 100 1974 4 dr. auto, 78K, new brakes & exhaust system. Metallic green. Michelin tires. Runs good. 5479. 673-9448.
- AUTOPAK Minolta 500. Excellent beginner camera \$20. Sears hub motor 13 gallon, central system. 575-627-5530.
- BABy Crib/young bed, playpen & other baby items. 423-4162 after 7pm.
- BEDROOM Set, Mediterranean style, 1983. \$200. 757-3254.
- BEDROOM Set Mediterranean style, 1983. \$200. 757-3254.
- BED room set, 5 pieces, "Mediterranean" style, 1983. \$200. 757-3254.
- BEHNDEN Pure book rack & heavy section of iron top desk. \$100. 627-7785.
- BICYCLE Kemo 10 speed mens good cond. asking \$25. 367-6681 eyes.
- BICYCLE Honda 200 gets bike flow or seat, very good cond. \$55. 498-7888.
- BICYCLES 1 lady's Raleigh 3 spd 1 man's JC Higgins 3 spd \$80 each. 821-3361.
- BICYCLES 2 brand new Panasonic sport 1000 bicycles 1 man's, 1 woman's, all warranty papers. 484-1452.
- BICYCLES 2 gents, exercise, Coyote for jacket wind. 863-7039.
- BICYCLE Boys blue 10 speed, excellent condition. \$45. 498-8189.
- BILTRITE Collapsible Pram (baby carriage) Exc. cond. \$75. 423-6751.
- BLACK MATARI SEAL coat size 21/4, Polo type, buttons, patch pockets, good cond. Original owner. Call 482-5678.
- BLAUPUNKT AM stereo cassette & speaker \$400. 2 Weatherproof dog houses, 1 hand carved French provincial Diningroom table & chairs & breakfast \$3000. 627-2135.
- BMW 1977 320i, stick, blaupunkt, 1981 tires, highly reliable, great commuter car. \$4200. 621-7583.
- BOY'S Bedroom set, 6 pieces, dark pine, formal top \$300. Small table. 827-7566.
- BOY'S Bike black 17" 10 speed. Ross perfect cond. \$100. 944-9378.
- BRAND NEW Ration Couch & 3 chairs. Asking \$500. Day 671-6681 or 671-6006.
- BROWN quilted twin bed, made of 100% cotton, carved Rus. w. wood dishes. 1 of a kind jewelry, 4 earrings, 3 necklaces, framed brick & brick size 12 color 2 mirrors. 482-3126.
- BULCK 1977 - white, loaded \$1800 best offer. 333-5866.
- BUICK 1978 1981 1982 1983 1984 1985 1986 1987 1988 1989 1990 1991 1992 1993 1994 1995 1996 1997 1998 1999 2000 2001 2002 2003 2004 2005 2006 2007 2008 2009 2010 2011 2012 2013 2014 2015 2016 2017 2018 2019 2020 2021 2022 2023 2024 2025 2026 2027 2028 2029 2030 2031 2032 2033 2034 2035 2036 2037 2038 2039 2040 2041 2042 2043 2044 2045 2046 2047 2048 2049 2050 2051 2052 2053 2054 2055 2056 2057 2058 2059 2060 2061 2062 2063 2064 2065 2066 2067 2068 2069 2070 2071 2072 2073 2074 2075 2076 2077 2078 2079 2080 2081 2082 2083 2084 2085 2086 2087 2088 2089 2090 2091 2092 2093 2094 2095 2096 2097 2098 2099 2100 2101 2102 2103 2104 2105 2106 2107 2108 2109 2110 2111 2112 2113 2114 2115 2116 2117 2118 2119 2120 2121 2122 2123 2124 2125 2126 2127 2128 2129 2130 2131 2132 2133 2134 2135 2136 2137 2138 2139 2140 2141 2142 2143 2144 2145 2146 2147 2148 2149 2150 2151 2152 2153 2154 2155 2156 2157 2158 2159 2160 2161 2162 2163 2164 2165 2166 2167 2168 2169 2170 2171 2172 2173 2174 2175 2176 2177 2178 2179 2180 2181 2182 2183 2184 2185 2186 2187 2188 2189 2190 2191 2192 2193 2194 2195 2196 2197 2198 2199 2200 2201 2202 2203 2204 2205 2206 2207 2208 2209 2210 2211 2212 2213 2214 2215 2216 2217 2218 2219 2220 2221 2222 2223 2224 2225 2226 2227 2228 2229 2230 2231 2232 2233 2234 2235 2236 2237 2238 2239 2240 2241 2242 2243 2244 2245 2246 2247 2248 2249 2250 2251 2252 2253 2254 2255 2256 2257 2258 2259 2260 2261 2262 2263 2264 2265 2266 2267 2268 2269 2270 2271 2272 2273 2274 2275 2276 2277 2278 2279 2280 2281 2282 2283 2284 2285 2286 2287 2288 2289 2290 2291 2292 2293 2294 2295 2296 2297 2298 2299 2300 2301 2302 2303 2304 2305 2306 2307 2308 2309 2310 2311 2312 2313 2314 2315 2316 2317 2318 2319 2320 2321 2322 2323 2324 2325 2326 2327 2328 2329 2330 2331 2332 2333 2334 2335 2336 2337 2338 2339 2340 2341 2342 2343 2344 2345 2346 2347 2348 2349 2350 2351 2352 2353 2354 2355 2356 2357 2358 2359 2360 2361 2362 2363 2364 2365 2366 2367 2368 2369 2370 2371 2372 2373 2374 2375 2376 2377 2378 2379 2380 2381 2382 2383 2384 2385 2386 2387 2388 2389 2390 2391 2392 2393 2394 2395 2396 2397 2398 2399 2400 2401 2402 2403 2404 2405 2406 2407 2408 2409 2410 2411 2412 2413 2414 2415 2416 2417 2418 2419 2420 2421 2422 2423 2424 2425 2426 2427 2428 2429 2430 2431 2432 2433 2434 2435 2436 2437 2438 2439 2440 2441 2442 2443 2444 2445 2446 2447 2448 2449 2450 2451 2452 2453 2454 2455 2456 2457 2458 2459 2460 2461 2462 2463 2464 2465 2466 2467 2468 2469 2470 2471 2472 2473 2474 2475 2476 2477 2478 2479 2480 2481 2482 2483 2484 2485 2486 2487 2488 2489 2490 2491 2492 2493 2494 2495 2496 2497 2498 2499 2500 2501 2502 2503 2504 2505 2506 2507 2508 2509 2510 2511 2512 2513 2514 2515 2516 2517 2518 2519 2520 2521 2522 2523 2524 2525 2526 2527 2528 2529 2530 2531 2532 2533 2534 2535 2536 2537 2538 2539 2540 2541 2542 2543 2544 2545 2546 2547 2548 2549 2550 2551 2552 2553 2554 2555 2556 2557 2558 2559 2560 2561 2562 2563 2564 2565 2566 2567 2568 2569 2570 2571 2572 2573 2574 2575 2576 2577 2578 2579 2580 2581 2582 2583 2584 2585 2586 2587 2588 2589 2590 2591 2592 2593 2594 2595 2596 2597 2598 2599 2600 2601 2602 2603 2604 2605 2606 2607 2608 2609 2610 2611 2612 2613 2614 2615 2616 2617 2618 2619 2620 2621 2622 2623 2624 2625 2626 2627 2628 2629 2630 2631 2632 2633 2634 2635 2636 2637 2638 2639 2640 2641 2642 2643 2644 2645 2646 2647 2648 2649 2650 2651 2652 2653 2654 2655 2656 2657 2658 2659 2660 2661 2662 2663 2664 2665 2666 2667 2668 2669 2670 2671 2672 2673 2674 2675 2676 2677 2678 2679 2680 2681 2682 2683 2684 2685 2686 2687 2688 2689 2690 2691 2692 2693 2694 2695 2696 2697 2698 2699 2700 2701 2702 2703 2704 2705 2706 2707 2708 2709 2710 2711 2712 2713 2714 2715 2716 2717 2718 2719 2720 2721 2722 2723 2724 2725 2726 2727 2728 2729 2730 2731 2732 2733 2734 2735 2736 2737 2738 2739 2740 2741 2742 2743 2744 2745 2746 2747 2748 2749 2750 2751 2752 2753 2754 2755 2756 2757 2758 2759 2760 2761 2762 2763 2764 2765 2766 2767 2768 2769 2770 2771 2772 2773 2774 2775 2776 2777 2778 2779 2780 2781 2782 2783 2784 2785 2786 2787 2788 2789 2790 2791 2792 2793 2794 2795 2796 2797 2798 2799 2800 2801 2802 2803 2804 2805 2806 2807 2808 2809 2810 2811 2812 2813 2814 2815 2816 2817 2818 2819 2820 2821 2822 2823 2824 2825 2826 2827 2828 2829 2830 2831 2832 2833 2834 2835 2836 2837 2838 2839 2840 2841 2842 2843 2844 2845 2846 2847 2848 2849 2850 2851 2852 2853 2854 2855 2856 2857 2858 2859 2860 2861 2862 2863 2864 2865 2866 2867 2868 2869 2870 2871 2872 2873 2874 2875 2876 2877 2878 2879 2880 2881 2882 2883 2884 2885 2886 2887 2888 2889 2890 2891 2892 2893 2894 2895 2896 2897 2898 2899 2900 2901 2902 2903 2904 2905 2906 2907 2908 2909 2910 2911 2912 2913 2914 2915 2916 2917 2918 2919 2920 2921 2922 2923 2924 2925 2926 2927 2928 2929 2930 2931 2932 2933 2934 2935 2936 2937 2938 2939 2940 2941 2942 2943 2944 2945 2946 2947 2948 2949 2950 2951 2952 2953 2954 2

Community Calendar

Please address all notices of local events to Calendar Editor, 132 E. Second Street (P.O. Box 1578) Mineola, N.Y. 11501 or phone 747-8282. Calendar items must be submitted two weeks prior to the event.

Friday, January 23

David Lee Roth in concert, 8 p.m. at Nassau Coliseum, Uniondale.

Sushi Bar

Lunch & Dinner

DARUMA

of Tokyo

Japanese Cuisine

Take Out • Catering

DELIVERY IN GREAT NECK

95 Middle Neck Road

Great Neck, NY 11021

(516) 464-4180

THEATRES

LOW MEADOW BROOK

WANTAGH (L.I.C.) QUARRY

738-2400

LITTLE SHOP OF HORRORS

STAGED

300, 271-0912

BEDROOM WINDOW

THE MORNING AFTER

ASSASSINATION

CRIMES OF THE HEART

TOUCH AND GO

WICKSVILLE TWIN CINEMA

71 MARILL ST. B12125

WANTED DEAD OR ALIVE

LADY AND THE TRAMP

THE KINDEED

MANHASSET TRIPLEX

STAN TREK IV

THE MORNING AFTER

CRIMES OF THE HEART

TOUCH AND GO

WESTBURY DRIVE IN THEATRE

CRITICAL CONDITION

WANTED DEAD OR ALIVE

THE KINDEED

ASSASSINATION

Anton Community Newspapers - Friday, January 23, 1987 Page 23

One Man Rescue and Obstructed Airway course, 1 to 4 p.m. at the Nassau Heart Office, 305 Willis Ave., Mineola. Fee: \$15. To register call: 747-5522.

N.Y. Express vs. Cleveland, 5:05 p.m. at Nassau Coliseum, Uniondale.

Sunday, January 25

The Long Island Depression Glass Society will hold a winter antique and collectible market from 10 a.m. to 5 p.m. at the American Legion Post No. 1120, 80 Herbert Ave., Lindenhurst. A wide range of antiques, collectibles, memorabilia and depression glass will be available. Donation: \$1.25 per person. For information call: 585-2220.

The "Merry Widow" will be performed by the Island Lyric Opera at 3 p.m. at the Glen Cove Public Library, Glen Cove Ave., Glen Cove. For information call: 676-2130.

Singles Focus Workshop on hope and joy in 1987: "Where Does It Come From?" Speaker, psychoanalyst Jacob D. Weiss of Rockville Centre, 7:30 p.m. For information call: 437-0520.

"The New Tax Laws & its Effects on Chronic Illness," part of a series of community health lectures, 2 p.m. at the American Heart Association in Mineola. Free. Sponsored by the Long Island Chapter of the American Liver Foundation.

Monday, January 26

Temple Sinai Sid Jacobson-North Shore YM & YWHA singles group meets at 8 p.m. at the temple, Roslyn Heights, Roslyn Heights. For singles ages 35 to 50. Members, \$5; non-members, \$5.

The Adult Diabetes Club at North Shore University Hospital, Manhasset, will meet at 7:45 p.m. in the hospital's Levitt Dining Room. Guest speaker, Lester R. Corn, M.D., advisor of the club. His topic: "Diet: Part I."

Long Island Cactus & Succulent Society meeting, 8 p.m. at Jericho High School, Route 107 North, Jericho. Program: Succulents of Africa; Show and Tell.

Tuesday, January 27

Hockey game: Islanders vs. Winnipeg, 8:05 p.m. at Nassau Coliseum, Uniondale.

The Lyman Langdon Audubon Society will present a variety of workshops on the study of raptors, hawks, falcons and owls, at 3 p.m. in the auditorium of the Lutheran Church, 1001 Northern Blvd., Manhasset. Public invited. Free. For information call Julius Portnow at 487-2045.

The Single Groups of Temple Beth El and the Sid Jacobson-North Shore YM & YWHA, will meet at 8 p.m. at the temple, 5 Old Mill Rd., Great Neck. Learn the up-to-date facts of what is really happening with your social security. For ages 45 and up.

All Nassau County retirees who worked for a local county or state agency, or are part of the N.Y. State Pension System, are invited to attend the next regular monthly meeting of the Nassau County Retirees Local 619, C.S.E.A., at Levittown Hall, Levittown Pkwy., Hicksville, 1 p.m. Guest speaker, Jane Adams, former assistant director of social services, Nassau County. Her topic: "Reverse Mortgages." For information call: 785-8871.

Wednesday, January 28

SPAN (Single Parent Action Network) for separated, divorced and widowed parents, will be holding a community meeting at 8 p.m. at the North Shore Child and Family Guidance Center, 450 Old Westbury Rd., Roslyn Heights. Topic: "Moods Are Contagious: How The Moods Of The Parent Affect The Moods Of The Child." For information call: 620-2710.

Thursday, January 29

Families In Step, a program for stepparents, sponsored by the North Shore Child and Family Guidance Association, will hold a community meeting at 7:30 p.m. at the North Shore Child and Family Guidance Center, 450 Old Westbury Rd., Roslyn Heights. Topic: "Breaking Down The Barriers In Stepparenting." Donation: \$5. For information call: 620-1071.



Louie's Shore Restaurant
Docks/Waterview Dining/Open All Year
EARLY BIRD DINNERS SUNDAY BRUNCH
Fresh Fish/Seafood Specialties/Duckling/Steaks/Prime Ribs
387 Main Street, Port Washington
Next To Town Dock
Owned and operated by the Zwerlein Family for 4 Generations
Major Credit Cards (516) 883-4242

Sunday Brunch

Every Sunday
12 Noon-3 PM



Commodore Inn
Bay Shore
please call for reservations

Dining Guide



Lello Ristorante
"A gastronomical haven."
Vogue

"The cuisine is remarkably light, elegantly presented and outstanding"
Gourmet

"A fine balance of Northern and Southern Italian Specialties.
Polished and Sophisticated."
NY Times

Private Room for Parties

65 East 54th Street
New York City
Tel. 751-1555

Kung Hai Fat Choy



PLEASE RESERVE NOW!!!

Join Us For Chinese New Year.
Starting January 29 thru February 1st.

CHINESE NEW YEAR BANQUET DINNER DELUXE

• Complimentary Bottle of Imported Beijing Long Yen
• Four Peaceful Dim Sum • Jellyfish • Shiu Mai
• Hunan Spare Ribs • Bean Curd Beef Roll
• Exciting Soup • 1987 New Year Health Soup
Outstanding Entree: Spiced Stewing Egg to Phoenix • A Fish In A Net • Prawn and Steak
Kew with Bird's Nest • Stir Fried Mixed Regional Vegetables
New Year Dessert • Chinese Cake and Fresh Fruit
(Reservations Required) (Min. 4 People Or More)

\$22.95

UNCLE WAI'S GARDEN

18 VILLAGE SQUARE, GLEN COVE 676-6818 or 676-6819

Roslyn Restaurant

Italian American Cuisine



Seafood gourmet specialties at very affordable prices!
Full Dinners or A La Carte Menu from Specialty
Soups to a choice of Luscious Desserts.
Always available: Our delicious large and small
steaks, pork & veal chops and of course our
special Italian salad and many other fine
Continental entree choices. All entrees are
accompanied by our famous garlic stoks.
• full bar • valet parking
all major credit cards accepted

Catering Facilities Available

Mon.-Fri. 10% luncheon discount to senior citizens

Bring The Whole Family

Open 7 Days for Lunch & Dinner
Serving full menu till 12 Midnight Sun.-Thurs.
and till 1 AM Fri.-Sat.

PLEASE CALL FOR RESERVATIONS

235 Roslyn Road, Roslyn • 621-2398



CELEBRATE THE CHINESE NEW YEAR

The Year Of The Rabbit
10 Course Imperial Banquet

\$20.50 per person

January 28-February 1

Reservations Only

Regular Menu Available

We Never Use MSG

507 Middle Neck Road, Great Neck
(across from Food Emporium)

Open 7 Days • Lunch • Dinner • Catering
482-7912



DON JUAN

The Best Mexican Restaurant

NORTH OF THE BORDER

FREE MENTREE
100 to \$100

with the purchase of another
Entree of Equal or Greater Value
Good Sun.-Thurs. with this coupon
Expires 2-22-87

The Melendez Family

536 Old Country Road

Westbury

(516) 333-1020

Open For Lunch & Dinner

7 Days

• What is the Baha'i Faith and what solutions does it offer? Discussion and fellowship at a private home in Westbury at 8:30 p.m. Free. All welcome. For information call: 333-4962 or 248-5760.

Friday, January 30

• WWF wrestling, 7:30 p.m. at Nassau Coliseum, Uniondale.

Saturday, January 31

• Hockey game: Islanders vs. Hartford, 7:05 p.m. at Nassau Coliseum, Uniondale.

Sunday, February 1

• February Fling Art Auction at North Shore High School Cafeteria, 450 Glen Cove Ave., Glen Head. Preview at 1 p.m., auction at 2 p.m. Sponsored by North Shore Coordination Council. This event is conducted by Garden City Gallery Limited and will benefit North Shore Coordination Council Scholarship Fund. Prizes will be raffled off. Admission and refreshments are free. For information call Pat Daley at 673-9747.

• Long Island Baroque Ensemble will perform at 3:30 p.m. at Christ Episcopal Church, East Main St., Oyster Bay. Tickets are \$6 for seniors and students, at \$9 for the general public. For information call: 423-9326.

• A re-enactment of an 1845 court-martial will take place from 1:30 to 3:30 p.m. at Old Bethpage

Village Restoration, Round Swamp Rd., Old Bethpage. For information call: 420-5280.

• "Long Island Artists Exhibition opens Feb. 1 and remains on view through March 1987 at the Nassau County Museum of Fine Art, Roslyn Harbor. For information call: 484-9337.

• Super Sunday Singles (over 30) party at the new Signatures Lounge, North Shore Towers, 270-10 Grand Central Pkwy., Floral Park. Disc jockey. Complimentary drink and hot buffet. Admission: \$10. 8 p.m. For information call: (718) 843-1078.

• "Some Enchanted Evening," the first annual auction to benefit the fight against Multiple Sclerosis, will be held Feb. 12 at 7 p.m. at the Crest Hollow Country Club, Woodbury. All single ladies invited. For information call: 421-3857.



CITATION
THE PEOPLE OF THE STATE OF NEW YORK
BY THE GRACE OF GOD
FREE AND INDEPENDENT
TO ATTORNEY GENERAL, STATE OF NEW YORK
SALVATORE L. ODDO, PUBLIC
ADMINISTRATOR OF THE COUNTY OF NASSAU,

and any and all of the persons cited upon this proceeding as heirs-at-law and next-of-kin of said JOHN E. RENKE, deceased, are unknown, and cannot, after diligent inquiry, be ascertained; and, that if said persons or any of them be dead, that the names or parts of the names, and place or places of residence, of any and all unknown persons who are the respective executors, administrators, heirs-at-law, next-of-kin, distributees, legatees, devisees, husbands or wives, or successor in interest of said deceased persons are unknown, and cannot, after diligent inquiry by ascertained and that personal service of the Citation cannot, with due diligence, be made upon them within the State.

GREETINGS:

WHEREAS,
FRED ALTHAUS
who is domiciled at 50 Arcadia Lane, Hicksville, New York,
has lately applied to the Surrogate's Court of our County of Nassau, to have a certain instrument in writing bearing date the 5th day of August, 1977 relating to both real and personal property duly proved as the Last Will and Testament of JOHN E. RENKE, deceased, who was at the time of his

death domiciled at 12 Acre Lane, Hicksville, New York in said County of Nassau.
THEREFORE, you, and each of you, are cited to show cause before the Surrogate's Court of our County of Nassau, at the Surrogate's Court, Nassau County Court House, at Mineola in the County of Nassau, on the 4th day of March 1987 at 9:30 a.m. of that day why the said Will and Testament should not be admitted to probate as a Will of real and personal property.

IN TESTIMONY WHEREOF, We have caused the seal of the Surrogate's Court of our said County of Nassau to be hereunto affixed.

L.S.

WITNESS, HON. C. RAYMOND RADIGAN, Judge of the Surrogate's Court of our said County of Nassau, at the Surrogate's Office, at Mineola, in the said County, the 12 day of January 1987.

PEYTON BOSWELL, III
Clerk of the Surrogate's Court
This citation is served upon you as required by law. You are not obliged to appear in person. If you fail to appear, it will be assumed that you consent to the proceedings, unless you file written verified objections thereto. You have a right to have an attorney-at-law appear for you.

ROSENTHAL & CURRY
Attorney for Petitioner,
Office & P.O. Address
1600 Front Street
East Meadow, New York 11554
212-5; 129-2287-4T #P-48-PLAINVIEW

THE NEW A PLACE FOR EVERYBODY
Casually Elegant For The Most Discerning

HEADS & TAILS

Restaurant

Fabulous Food • Super Service • Dynamite Crowd

LIVE ENTERTAINMENT AT OUR FIATTO BAR FRIDAY AND SATURDAY NIGHTS FROM 10 PM

Lunch • Dinner • Cocktails • Late Snacks
Sunday Brunch Noon - 3 P.M.
For information & Reservations Call 484-6500
Open 7 Days 10 A.M. - 3 A.M.
We hope to see you soon
STEVE CHIRASH & NANCY LEE COMBESS

Dining Guide

On Super Bowl Sunday

Score a Touchdown with catering from BEN'S

HOSHER GOURMET RESTAURANTS & CATERERS
Under Rabbinical Supervision

CALL NOW & PLACE YOUR ORDER

North/Nassau 140 WHEATLEY PLAZA GREENVALE (516) 621-3340	South/Nassau 933 ATLANTIC AVE. BALDWIN HARBOR (516) 668-2072	Suffolk 135 ALEXANDER AVE. LAKE GROVE (516) 979-8770
---	---	---

HEARD ANY GOOD ONES LATELY?

TWO DINNERS FOR \$15.95
7 Days 4 P.M.-Midnite. No sharing.

LUNCH SPECIALS
Mon thru Sun Noon-Tu 3:30
\$2.95 SENIOR CITIZENS TR & P.M.

BRUNCH SAT. & SUN.
COCKTAIL, COFFEE & DESSERT
CHOICE OF FIVE ENTREES \$7.95

LIVE MUSIC THUR FRI & SAT
10 p.m. Till 3 a.m. No Cover
25 & Over Proper Attire

Ripples
333 Old Country Road, Westbury
(Opp. Ohrbach's) 957-8666

Exclusively Chinese Restaurant

Dynasty

Szechuan, Hunan, Cantonese

WISHES TO ALL OUR FRIENDS
A HAPPY CHINESE NEW YEAR!
CELEBRATE WITH OUR ANNUAL
CHINESE BANQUET DINNER

JANUARY 23 TO FEBRUARY 1, 1987
\$20 PER PERSON - RESERVATIONS SUGGESTED

SUPER BOWL SUNDAY
10% OFF ON ALL TAKE-OUT ORDERS WITH THIS AD 1-25-87

1042 NORTHERN BLVD., ROSLYN ESTATES 11578
(EAST OF SEARINGTOWN ROAD) (516) 621-1870

"Out of the ordinary dishes (that) are truly extraordinary."

OMED SETS NEW STANDARD FOR ELEGANT CHINESE DINING ON LONG ISLAND

271 PINE HOLLOW SHOPPING CENTER
922-2500 (Route 106) OYSTER BAY 922-2501

KUNG HEE FAT CHOY

YEAR OF THE RABBIT
CHINESE NEW YEAR'S PARTY
JANUARY 26 - FEBRUARY 1st - PARTY OF 4 OR MORE

FULL 8 COURSE
PEKING DUCK BANQUET DINNER

Complimentary Bottle Of Chinese White Wine
• Appetizer • Soup
• 5 Main Courses
• Dessert

\$22.50 per person

Reservations Requested. Regular Menu Available.
Plan that special party with us. We have lovely private alcoves for your Dining Pleasure.
Catering For All Occasions
FREE PARKING

Join us for Chinese New Year
January 29 to February 5th
8 Course Chinese Banquet Dinner
Complimentary Bottle of Chinese White Wine

Reservations Requested Regular Menu Available

Golden Woks

CHINESE RESTAURANT
18 Cottage Row, Glen Cove, N.Y.
759-3037
Mon - Thurs 11:00-10:30 Fri & Sat 11:00-12:00 Sun 1:00-10:30